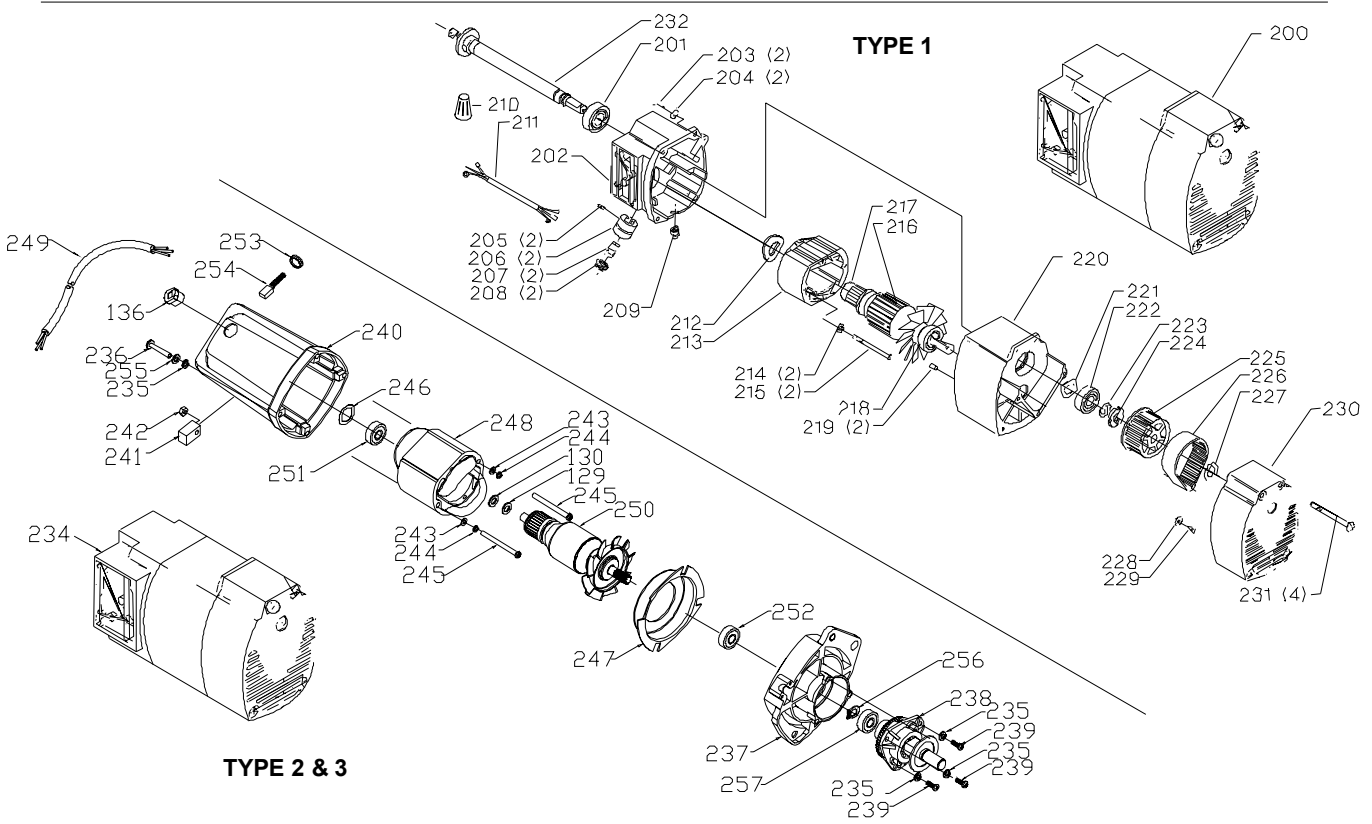
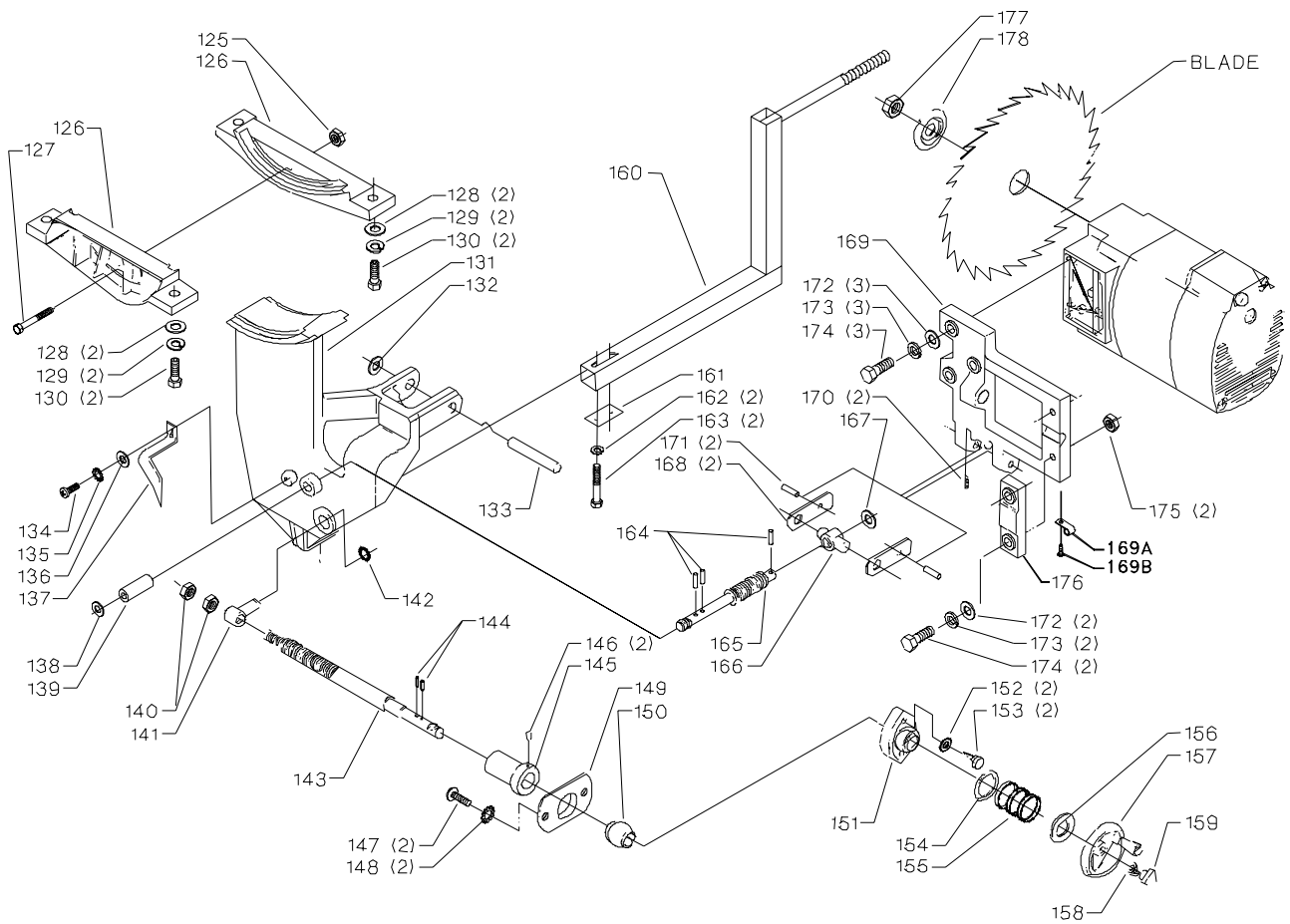


# REPLACEMENT PARTS

<u>Ref.</u>	<u>No.</u>	<u>Part No.</u>	<u>Description</u>	<u>Ref.</u>	<u>No.</u>	<u>Part No.</u>	<u>Description</u>
	1	34-678	TABLE INSERT, INCL:	*		1313282	BLADE GUARD ASSY, INCL:
	1A	1246135	M6 X 16MM FLAT HD SCREW	55		1313270	PUSH NUT
	1B	1313226	RUBBER WASHER	56		1313271	PIN
	2	1348724	LEFT REAR RAIL	57		1313272	"SEE THRU" BLADE GUARD
	3	1348722	RIGHT REAR RAIL	58		1313273	PIN
	4A	1310105	M8 X 16MM HEX HD SCREW	59		1313274	GUARD BRACKET
	4B	1246157	M8.1 LOCK WASHER	60		1313275	LOCK RING
	4C	1340637	M8.4 FLAT WASHER	61		1313276	SPRING
	5A	1340637	M8.4 FLAT WASHER	62		1313277	SPLITTER
	5B	1246157	M8.1 LOCK WASHER	63		1313278	BUSHING
	5C	1243398	M8 HEX NUT	64		1313279	ANTI-KICKBACK FINGER
	6A	1243456	M6 HEX NUT	65		1310311	M4 X 22MM SPRING PIN
	6B	1243520	M6.1 LOCK WASHER	66		1246015	M6 X 20MM HEX HD SCREW
	6C	1310062	M6.4 FLAT WASHER	67		904-03-030-1757	1/4" EXT TOOTH WASHER
	9	1348729	END PLUG	68		904-01-010-1604	5/16" FLAT WASHER
	10	1348889	M6 X 30MM CARRIAGE HD SCREW	69		1313280	BRACKET
	11	902699	SCALE	70		1243476	M12 HEX NUT
	12	902897	RIGHT FRONT RAIL	71		904-01-010-1608	5/8" FLAT WASHER
	13	1348726	ADAPTER	72		1313281	M6 WING NUT
	14	902940	LEFT FRONT RAIL	*		1348731	FENCE ASSY, INCL:
	15	1348723	TABLE	73		1348739	END PLUG (NOTE B)
	16	902894	EXT. WING	74		1348740	REAR CLAMP
	17A	1310105	M8 X 16MM HEX HD SCREW	75		1348741	BUMPER
	17B	904-02-010-1703	5/16" LOCK WASHER	76		1246047	M5 X 16MM CHEESE HD SCR(NOTE A)
	17C	904-01-010-1605	3/8" FLAT WASHER	77		1341951	M6 X 10MM HEX HD SCR (NOTE A)
	18	902896	CABINET	78		1348742	FENCE BUMPER
	19	904-01-010-1605	3/8" FLAT WASHER	79		1342000	M6 X 8MM FLAT HD SCR (NOTE A)
	20	904-02-010-1703	5/16" LOCK WASHER	80		1343642	M6 LOCK NUT
	21	1310105	M8 X 16MM HEX HD SCREW	81		1348743	CLAMP
	22	902895	COVER	82		1341046	M6 X 8MM CHEESE HD SCR (NOTE A)
	23	1313218	PUSH PIN	83		1246140	M6.4 FLAT WASHER
	24	902900	HANDWHEEL ASSY	84		1348744	POINTER
	25	1313239	WASHER	85		902899	FENCE
	26	902898	KNOB	86		1330151	M6 X 35MM HEX HD SCREW
	27	905771	NAMEPLATE	87		1246140	M6.4 FLAT WASHER
	28	1087576	#8 X 1/2" PAN HD SCREW	88		1348746	ECCENTRIC
	29	1313227	M4 X 12MM CHEESE HD SCREW	89		1243496	M10 HEX NUT
	30	1310162	M5 X 12MM PAN HD SCREW	90		1348747	HANDLE
	31	1343759	SWITCH, INCL:	91		1348659	M10 X 78MM HEX SOC HD SCREW
	32	1343758	SWITCH KEY	92		1349141	NAMEPLATE
	33	1313230	SWITCH BOX	94		1313197	15/16" HEX ARBOR WRENCH
	34	1313229	BREAKER SWITCH W/PLATE, INCL:	95		1313232	7/8" OPEN END WRENCH, EMO
	35	1313228	NUT	96		902893	HARDWARE PACK
	36	1313228	NUT				
	37	904-03-030-1795	3/16" EXT TOOTH WASHER	*			NOT SHOWN ASSEMBLED
	38	1243395	M5 HEX NUT				EMO=EARLY MODELS ONLY
	39	1313220	CLAMP				CMO=CURRENT MODELS
	40	1310162	M5 X 12MM PAN HD SCREW				
	41	1313231	BUSHING				
	42	1313235	POWER CORD				
	43	1345226	MITER GAGE ASSY				

**NOTE A:** WHEN SERVICING, USE THREAD RETAINING COMPOUND PRIOR TO INSTALLATION.

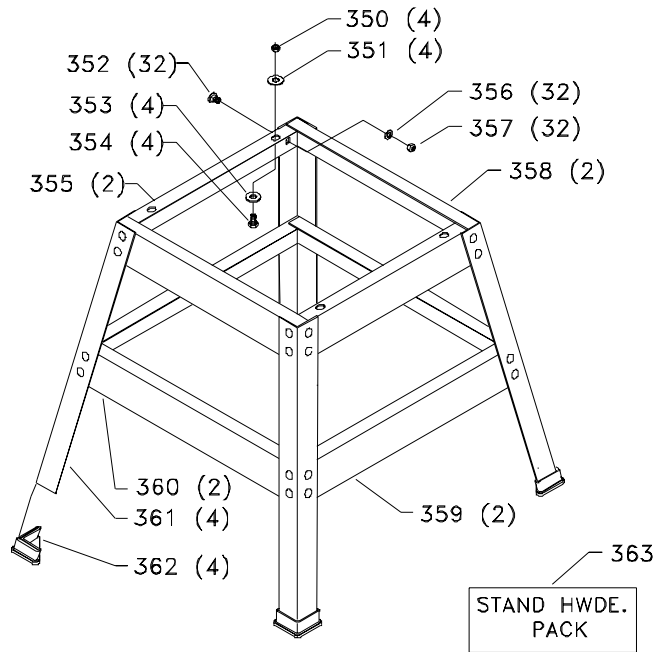
**NOTE B:** CURRENT MODELS ONLY HAVE PLUG AT THE HEAD END OF THE FENCE



# REPLACEMENT PARTS

<u>Ref.</u>	<u>No.</u>	<u>Part No.</u>	<u>Description</u>	<u>Ref.</u>	<u>No.</u>	<u>Part No.</u>	<u>Description</u>
	125	1343642	M6 LOCK NUT	205		1310172	SPECIAL SCREW, T1
	126	1313286	TRUNNION	206		1313112	BRUSH HOLDER, T1
	127	1310154	M6 X 65MM PAN HD SCREW	207		1313113	BRUSH, T1
	128	904-01-010-1605	3/8" FLAT WASHER	208		1313114	BRUSH CAP, T1
	129	904-02-010-1703	5/16" LOCK WASHER	209		1313317	BUSHING, T1
	130	1246016	M8 X 25MM HEX HD SCREW	210		438-01-007-0009	WIRE NUT, T1
	131	1345235	TRUNNION	211		1313318	CABLE, T1
	132	1313289	WASHER	212		1313118	WAVE WASHER, T1
	133	1313290	PIN	213		1313319	FIELD ASSY., T1
	134	1310155	M5 X 8MM CHEESE HD SCREW	214		904-03-030-1795	3/16" EXT TOOTH WASHER, T1
	135	1320101	M5.3 EXT TOOTH WASHER	215		1310148	M5 X 60MM PAN HD SCREW, T1
	136	1340622	M6.4 FLAT WASHER	216		1313121	ARMATURE ASSY, INCL., T1
	137	1313287	POINTER	217		1313120	BALL BEARING, T1
	138	904-01-010-1606	3/8" FLAT WASHER	218		1313122	BALL BEARING, T1
	139	1313300	SPACER	219		1313207	PIN, T1
	140	1243496	M10 HEX NUT	220		1313359	REAR HOUSING, T1
	141	1313301	NUT	221		1313124	WAVE WASHER, T1
	142	1313299	O RING	222		1313122	BALL BEARING, T1
	143	1313305	SHAFT	223		1313126	LOCKWASHER, T1
	144	1310310	M3 X 18MM SPRING PIN	224		1313127	SHAFT NUT, T1
	145	1313302	COLLAR	225		1313129	PULLEY, T1
	146	1243304	M6 X 8MM HEX SOC SET SCREW	226		34-674	DRIVE BELT, T1
	147	1246014	M6 X 18MM PAN HD SCREW	227		1246196	EXT RET RING, T1
	148	904-03-030-1757	1/4" EXT TOOTH WASHER	228		1310195	SPECIAL WASHER, T1
	149	1313303	BLOCK	229		1310143	M5 X 8MM PAN HD SCREW, T1
	150	1313304	BEARING	230		1313360	PULLEY COVER, T1
	151	1313307	BLOCK	231		1310158	M5 X 45MM CHEESE HD SCREW, T1
	152	1310216	M8.4 EXT TOOTH WASHER	232		1313316	SHAFT, T1
	153	1313308	M8 X 18MM CHEESE HD SCREW	234		906297	MOTOR ASSY. T2, T3, INCL:
	154	1313309	WASHER	235		1243520	WASHER, T2, T3
	155	1313310	SPRING	236		1347226	SCREW, T2, T3
	156	1313311	SPECIAL WASHER	237		896270	GEAR HSG, T2, T3
	157	902900	HANDWHEEL ASSY	238		896332	JACKSHAFT ASSY, T2, T3
	158	1313239	WASHER	239		1347291	SCREW, T2, T3
	159	902898	KNOB	240		898896	MOTOR HOUSING, T2, T3
	160	1345233	GUARD SUPPORT	241		1349622	BLOCK, T2, T3
	161	1345234	PLATE	242		1343504	LOCK-NUT, T2, T3
	162	1243520	M6.1 LOCK WASHER	243		1343538	WASHER, T2, T3
	163	1246128	M6 X 40MM HEX HD SCREW	244		1246102	WASHER, T2, T3
	164	1310310	M3 X 18MM SPRING PIN	245		1344026	SCREW, T2, T3
	165	1313295	ELEVATING SHAFT	246		1343267	WASHER, T2, T3
	166	1313296	ELEVATING NUT	247		894273	RING, T2, T3
	167	904-01-010-1620	FLAT WASHER	248		894278	FIELD, T2, T3
	168	1313297	ELEVATING LINK	249		1347574	MOTOR CORD, T2, T3
	169	1313293	MOTOR BRACKET, INCL:	250		894275	ARMATURE, T2, T3
	169A	1330682	CLAMP	251		894450	BALL BEARING, T2, T3
	169B	1310143	M5 X 8MM PAN HD SCREW	252		400-08-139-0008	BEARING, T2, T3
	170	1246008	M5 X 12MM HEX SOC SET SCREW	253		1348267	BRUSH CAP, T2, T3
	171	1313291	PIN	254		1348266	BRUSH, T2, T3
	172	904-01-010-1620	FLAT WASHER	255		1246140	WASHER, T2, T3
	173	904-02-010-1703	5/16" LOCK WASHER	256		1243407	RETAINING RING, T2, T3
	174	1246093	M8 X 30MM HEX HD SCREW	257		1341834	BALL BEARING, T2, T3
	175	1243398	M8 HEX NUT				
	176	1313294	SEAT				
	177	902-01-201-2567	5/8-18 HEX NUT				
	178	n 904051	FLANGE, T2, T3				
		1313292	FLANGE, T1				
	200	1313314	MOTOR ASSY. T1, INCL., NOTE C				
	201	1313116	BALL BEARING, T1				
	202	1313117	FRONT HOUSING, T1				
	203	1310157	M6 X 20MM PAN HD SCREW, T1				
	204	904-02-020-1702	1/4" LOCK WASHER, T1				

**NOTE C:** THE TYPE 1 MOTOR, REF. 200, HAS BEEN REPLACED BY THE TYPE 2 & 3 MOTOR, REF. 234.



<b>Ref.</b>	<b>No.</b>	<b>Part No.</b>	<b>Description</b>
*		904400	STAND ASSY, INCL:
	350	1243398	M8 HEX NUT
	351	904-01-010-1606	3/8" FLAT WASHER
	352	1349177	M8 X 16MM CARRIAGE HD SCREW
	353	904-01-010-1606	3/8" FLAT WASHER
	354	1310105	M8 X 16MM HEX HD SCREW
	355	902941	BRACKET
	356	904-01-010-1605	3/8" FLAT WASHER
	357	1243398	M8 HEX NUT
	358	902903	BRACKET
	359	902901	BRACKET
	360	902902	BRACKET
	361	904805	LEG
	362	427-99-048-0001	PLASTIC FOOT
	363	904808	STAND HARDWARE PACK

\* NOT SHOWN ASSEMBLED

---

#### STANDARD SAFETY EQUIPMENT

In order to promote tool safety, Delta Machinery strictly enforces the policy of repairing or replacing any damaged or missing standard safety equipment on machines presented to Delta Authorized Service Centers for service/repairs. Any product that is presented to a Delta Authorized Service Centers for repairs which contains missing or damaged standard safety equipment will have that equipment repaired or replaced and the customer will be charged for any such service/repairs. Customers can avoid such charges only if the missing safety component is supplied to the service center at the time of repair.

*This parts list is provided to aid in obtaining service parts. Copies of the instruction and maintenance literature can be obtained through the Delta Technical Publications Department or through your service outlet.*