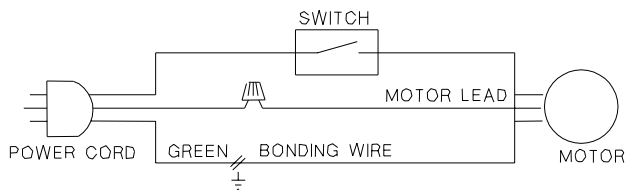
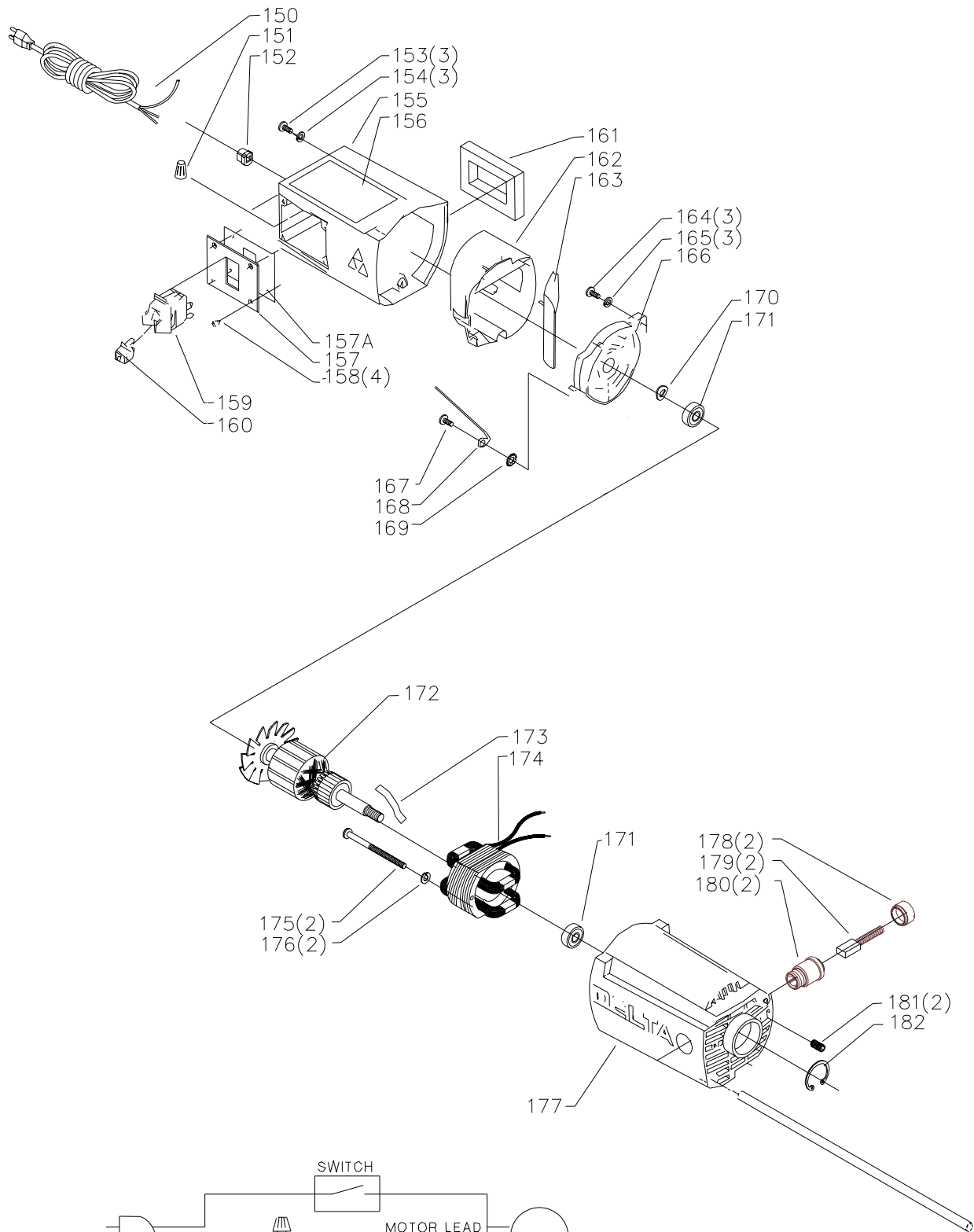


# REPLACEMENT PARTS

Ref.			Ref.		
<u>No.</u>	<u>Part No.</u>	<u>Description</u>	<u>No.</u>	<u>Part No.</u>	<u>Description</u>
1	1349864	WRENCH ASSEMBLY	51	1310105	M8 X 1.25 X 16MM HEX HD SCREW
2	A07254	TOP COVER	52	A07259	UPPER FRAME
3	1344933	M5 X .8 X 20MM HEX SOC HD SCREW	53	22-562	KNIVES
4	905789	ELEVATNG HANDLE ASS'Y	54	1342143	KNIFE LOCKING BAR
5	A07255	HANDLE	55	1343866	KEY
6	1342184	GRIP	56	1345880	M6X16MM SOC BUTTON HD SCR
7	1310162	5 X .8 X 12MM PAN HD SCREW	57	1342217	TOOL HOLDER
8	1246102	M5.3 FLAT WASHER	58	A07260	RETAINER
9	1343856	AIR MANIFOLD	59	A07287	BLOCK
10	A07256	TOP COVER	60	1343871	RETAINER
11	1246135	M6 X 1 X 16MM FLAT HD SCREW	61	A07261	RETAINER
12	A07257	KNOB	62	1343872	PULLEY
13	1343855	DUST CHUTE	63	22-546	BELT
14	1340080	WARNING LABEL	64	1343849	M16 HEX NUT
15	1246196	EXT RET RING	65	1343873	PULLEY
16	1343882	CHAIN	69	1343878	SPRING
17	1343881	SPROCKET	73	1343879	INFEED ROLLER
18	1343916	SPACER	76	1343874	SPRING
*	1343948	GEAR BOX ASSY, INCL.:	77	1343876	OUTFEED ROLLER
19	1343915	M5 X .8 X 35MM HEX SOC HD SCREW	100	1343859	M20 X 1.00 HEX LOCKNUT
20	1246050	M5 X .8 X 25MM HEX SOC HD SCREW	101	1343861	ELEVATING NUT
21	1343947	OUTSIDE COVER	102	1343863	ELEVATING NUT
22	920-04-013-1276	BEARING	103	1343883	POST
23	1343912	SHAFT	104	1343892	SPINDLE
24	A07264	CUTTERHEAD	107	905872	COVER
25	1343908	BUSHING	108	1243476	M12 HEX NUT
26	1343911	GEAR	112	1343894	GUIDE
27	1343910	INTERMEDIATE GEAR	113	A07262	PLATEN
28	1343909	GEAR	114	1343886	BOOT
29	1343907	SPACER	115	1343884	SPINDLE
30	1343906	SPACER	117	1343887	THRUST BEARING
31	1343946	INSIDE COVER	119	1343888	RETAINER
32	1343902	COVER	120	A07263	BASE
33	1343903	PINION	121	1343889	THRUST BEARING
34	1086894	BEARING	122	1343890	GEAR
35	1342213	KNIFE REMOVAL TOOL	123	1343891	M10 LOCKNUT
36	1343862	CABLE CLAMP	124	1243394	M5 X .8 X 10MM CHEESE HD SCREW
37	1343864	PLATE	126	1343897	SCALE
38	1342204	SPRING	127	905881	COVER
39	1342455	M5 X .8 X 10MM PAN HD SCREW	129	1243503	EXT RET RING
40	1320101	M5.3 EXT TOOTH WASHER	130	1343899	SHAFT
41	A07258	CURSOR	132	1343898	SUPPORT
42	1349863	M3 FLAT WASHER	135	903405	TABLE SUPPORT
43	1246000	M3 X 6MM CHEESE HD SR	136	1342198	SPRING WASHER
44	1343937	MOTOR PIVOT ROD	137	1342133	TABLE BUSHING
45	905813	NAMEPLATE	138	1246067	M6 X 1 X 16MM CHEESE HD SCREW
46	1343858	BELT GUARD	139	1342130	TABLE
47	1340637	M8.4 FLAT WASHER	140	1246177	M4 X 7 X 6MM CHEESE HD SCREW
48	1246051	M5 X .8 X 12MM HEX SOC HD SCREW	141	1243456	M6 HEX NUT
49	1343857	BRACKET	142	1246015	M6 X 1 X 20MM HEX HD SCREW
50	1342145	CUTTERHEAD PIN			



WIRING DIAGRAM

# REPLACEMENT PARTS

<u>Ref.</u>	<u>Part No.</u>	<u>Description</u>
*	1343942	MOTOR ASSY, INCL.:
150	1343919	CORD
151	438-01-007-0042	WIRE NUT
152	438-01-004-0062	HEYCO BUSHING
153	1310006	M5 X .8 X 20MM ROUND HD SCREW
154	1343538	M5.1 LOCK WASHER
155	905882	HOUSING
156	905800	WARNING LABEL
157	905749	SWITCH PLATE
157A	1343850	INSULATOR
158	1343923	M5.5 X .8 X 10MM PAN HD SCREW
159	1343759	SWITCH, INCL.:
160	400-06-068-0002	SWITCH KEY
161	1343924	GASKET
162	1343925	COVER
163	1343926	DEFLECTOR
164	1343927	M5.5 X .8 X 17MM PAN HD SCREW
165	1343538	M5.1 LOCK WASHER
166	1343928	END COVER
167	1343923	M5.5 X .8 X 10MM PAN HD SCREW
168	1343920	BONDING WIRE
169	1320101	M5.3 EXT TOOTH WASHER
170	1343929	WAVE WASHER
171	920-04-013-1045	BEARING
172	1343930	ARMATURE
173	1343931	SLEEVE
174	1343943	FIELD
175	1343932	M4.8 X 72MM PAN HD SCREW
176	1343538	M5.1 LOCK WASHER
177	905883	MOTOR HOUSING
178	1343936	BRUSH CAP
179	1313113	BRUSH
180	1343934	BRUSH HOLDER
181	1246008	M5 X .8 X 12MM HEX SOC SET SCREW
182	1246195	INT RET RING

---

## STANDARD SAFETY EQUIPMENT

In order to promote tool safety, Delta Machinery strictly enforces the policy of repairing or replacing any damaged or missing standard safety equipment on machines presented to Delta Authorized Service Centers for service/repairs. Any product that is presented to a Delta Authorized Service Center for repair with damaged or missing standard safety equipment will have that equipment repaired or replaced and the customer will be charged for any such service/repairs. Customers can avoid such charges only if the missing safety component is supplied to the service center at the time of repair.

This parts list is provided to aid in obtaining service parts. Copies of the instruction and maintenance literature can be obtained through the Delta Technical Publications Department, your service outlet, or by visiting the Delta Website @ [www.deltamachinery.com](http://www.deltamachinery.com).