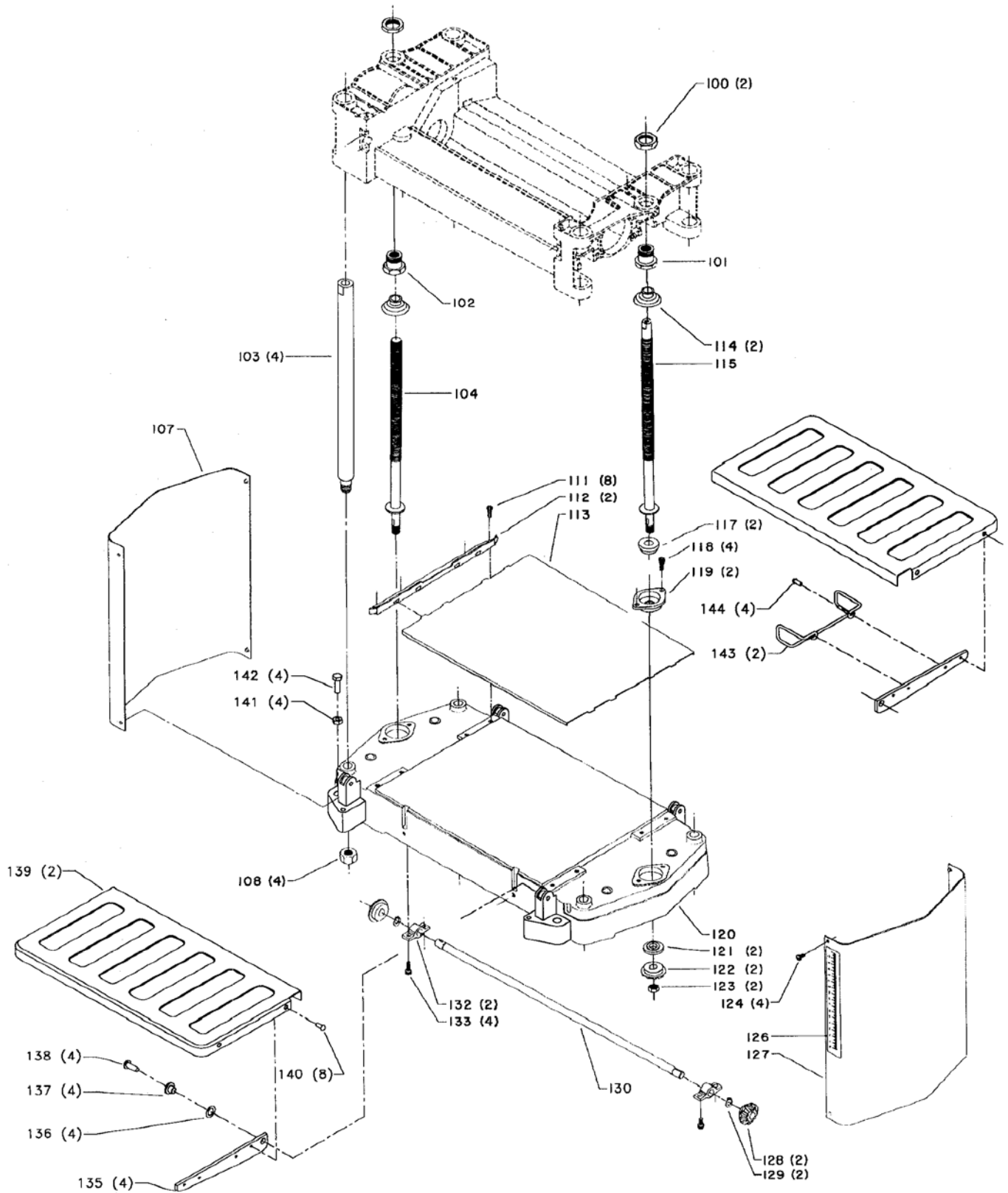


# REPLACEMENT PARTS

Ref. No.	Part No.	Description	Ref. No.	Part No.	Description
1	1343851	HANDLE	42	1246102	M5.3 FLAT WASHER
2	1341950	M5 X 35MM DOWEL PIN	43	1343865	POINTER
3	1344933	M5 X 20MM HEX SOC HD SCREW	44	1343937	MOTOR PIVOT ROD
4	905789	ELEVATNG HANDLE ASSY	45	905813	NAMEPLATE
5	1342035	M6 X 12MM FLAT HD SCREW	46	1343858	BELT GUARD
6	905748	TOP COVER	47	1340637	M8.4 FLAT WASHER
7	1310162	M5 X 12MM PAN HD SCREW	48	1246051	M5 X 12MM HEX SOC HD SCREW
8	1246102	M5.3 FLAT WASHER	49	1343857	BRACKET
9	1343856	AIR MANIFOLD	50	1340637	M8.4 FLAT WASHER
10	1343854	M5 WING NUT	51	1310105	M8 X 16MM HEX HD SCREW
11	1246102	M5.3 FLAT WASHER	52	909944	UPPER FRAME
12	1246158	M5 X 16MM SET SCR (NOTE A)	53	1343868	SPRING
13	1343855	DUST CHUTE	54	1343867	CUTTERHEAD
14	1340080	CUTTERHEAD WARNING	55	1343866	KEY
15	1246196	EXT RET RING	56	22-547	KNIVES, (SET OF 2)
16	1343882	CHAIN	57	1343870	KNIFE LOCK BAR
17	1343881	SPROCKET	58	1343869	KNIFE LOCK SCREW
18	1343916	SPACER	59	1086894	BALL BEARING
*	1343948	GEAR BOX ASSY, CONST OF:	60	1343871	BEARING RETAINER
19	1343915	M5 X 35MM HEX SOC HD SCREW	61	1246051	M5 X 12MM HEX SOC HD SCREW
20	1246050	M5 X 25MM HEX SOC HD SCREW	62	1343872	CUTTERHEAD PULLEY
21	1343947	OUTSIDE COVER	63	22-546	BELT
22	920-04-013-1276	BALL BEARING	64	1343849	M16 HEX NUT (NOTE A)
23	1343912	SHAFT	65	1343873	MOTOR PULLEY
25	1343908	BUSHING	66	1343882	CHAIN
26	1343911	SMALL GEAR	67	1343881	SPROCKET
27	1343910	INTERMEDIATE GEAR	68	1246196	EXT RET RING
28	1343909	LARGE GEAR	69	1343878	INFEEED SPRING
29	1343907	SPACER UNDERCUT	70	1343875	BEARING BLOCK
30	1343906	SPACER	71	1343880	L. H. RETAINER
31	1343946	INSIDE COVER	72	1246051	M5 X 12MM HEX SOC HD SCREW
32	1343902	COVER	73	1343879	INFEEED ROLLER
33	1343903	PINION GEAR	74	1343877	R. H. RETAINER
34	1086894	BALL BEARING	75	1246051	M5 X 12MM HEX SOC HD SCREW
35	1310162	M5 X 12MM PAN HD SCREW	76	1343874	OUTFEED SPRING
36	1343862	CABLE CLAMP	77	1343876	OUTFEED ROLLER
37	1343864	PLATE	78	1343917	KNIFE GAGE
38	1310162	M5 X 12MM PAN HD SCREW	79	1343918	8X10 OPEN END WRENCH
39	1342455	M5 X 10MM PAN HD SCREW			
40	1320101	M5.3 EXT TOOTH WASHER			
41	1310162	M5 X 12MM PAN HD SCREW	*	NOT SHOWN ASSEMBLED	

## SERVICE NOTES:

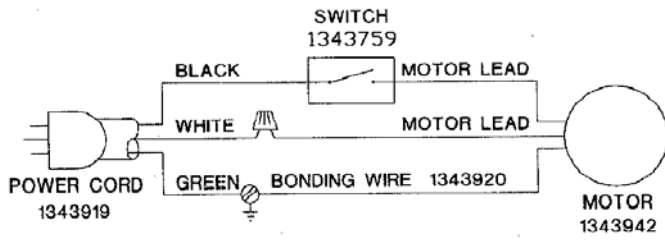
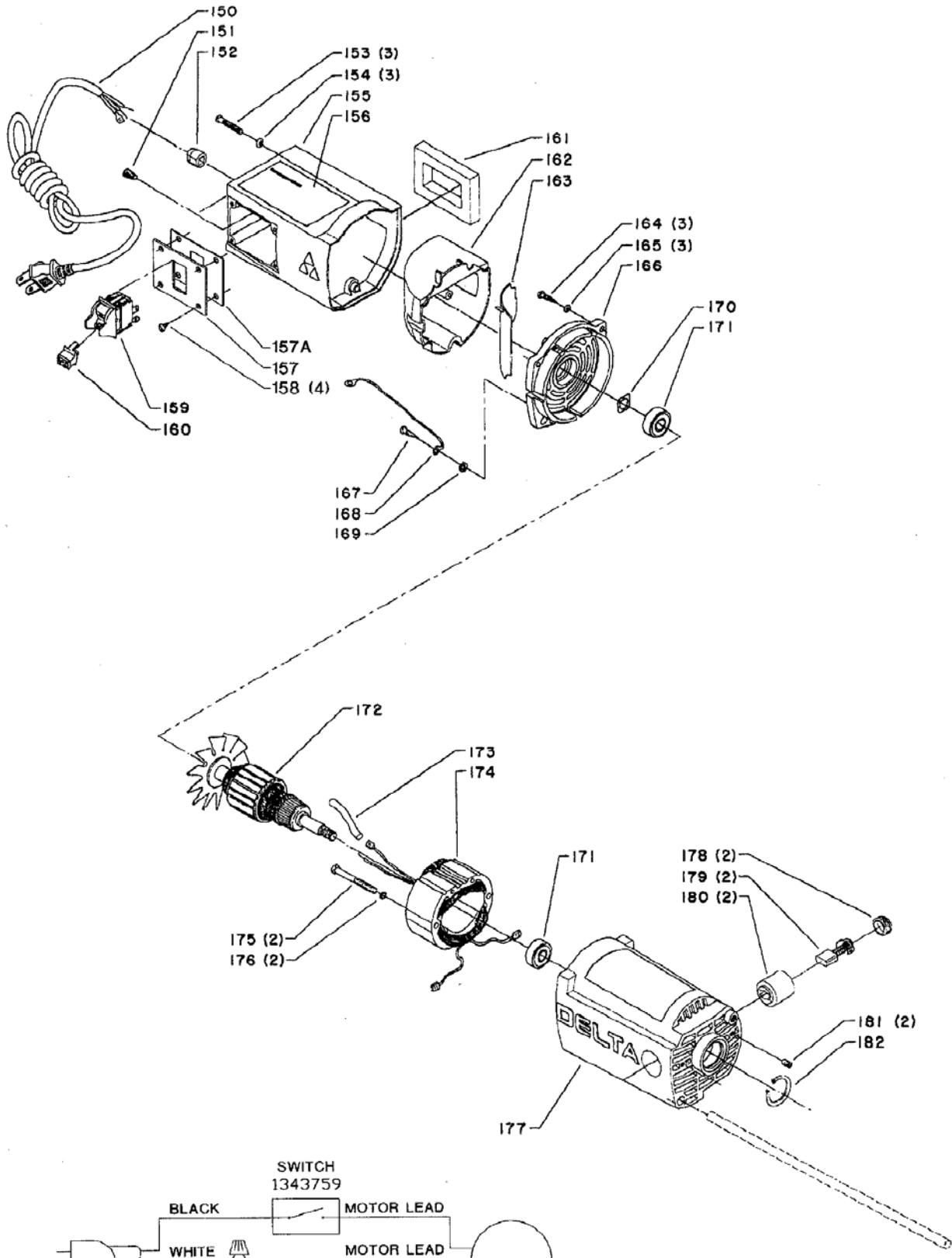
**A:** Install with Loctite to prevent loosening during operation.



# REPLACEMENT PARTS

Ref.

<u>No.</u>	<u>Part No.</u>	<u>Description</u>
100	1343859	M20 X 1.00 HEX LOCK NUT
101	1343861	R. H. ELEVATING NUT
102	1343863	L. H. ELEVATING NUT
103	1343883	POST
104	1343892	L. H. SPINDLE
107	905872	COVER
108	1243476	M12 HEX NUT
111	1246051	M5 X 12MM HEX SOC HD SCREW
112	1343894	GUIDE
113	1343895	PLATEN
114	1343886	BOOT
115	1343884	R. H. SPINDLE
117	1343887	THRUST BEARING
118	1246051	M5 X 12MM HEX SOC HD SCREW
119	1343888	RETAINER
120	905880	BASE
121	1343889	THRUST BEARING ASSY
122	1343890	GEAR
123	1343891	M10 LOCK NUT
124	1243394	M5 X 10MM CHEESE HD SCREW
126	1343897	SCALE
127	905881	COVER
128	1343890	GEAR
129	1243503	EXT RET RING
130	1343899	SHAFT
132	1343898	SUPPORT
133	1246051	M5 X 12MM HEX SOC HD SCREW
135	903405	TABLE SUPPORT
136	1342198	SPRING WASHER
137	1342133	TABLE BUSHING
138	1246067	M6 X 16MM CHEESE HD SCREW
139	1342130	INFEED/OUTFEED TABLE
140	1246177	M4 X 6MM CHEESE HD SCREW
141	1243456	M6 HEX NUT
142	1246015	M6 X 20MM HEX HD SCREW
143	1342132	CORD WRAP, EMO
144	1246177	M4 X 6MM CHEESE HD SCREW



WIRING DIAGRAM

# REPLACEMENT PARTS

Ref.	No.	Part No.	Description
*		A00903	MOTOR, CMO, W/PLASTIC FAN, CONST OF:
*		1343942	MOTOR, EMO, W/METAL FAN, CONST OF:
150		1343919	MOTOR CORD
151		438-01-007-0042	WIRE NUT
152		438-01-004-0062	5/8" HEYCO BUSHING
153		1310006	M5 X 20MM ROUND HD SCREW
154		1343538	M5.1 LOCK WASHER
155		905882	HOUSING
156		905808	WARNING LABEL
157		905749	SWITCH PLATE
157A		1343850	INSULATOR
158		1343923	M5.5 10MM PAN HD SCREW
159		1343759	SWITCH, INCL:
160		400-06-068-0002	SWITCH KEY
161		1343924	GASKET
162		1343925	COVER
163		1343926	DEFLECTOR
164		1343927	M5.5 17MM PAN HD SCREW
165		1343538	M5.1 LOCK WASHER
166		1343928	END COVER
167		1343923	M5.5 10MM PAN HD SCREW
168		1343920	BONDING WIRE
169		1320101	M5.3 EXT TOOTH WASHER
170		1343929	WAVE WASHER
171		920-04-013-1045	BALL BEARING
172	n	A00904	ARMATURE, CMO, W/ PLASTIC FAN
		1343930	ARMATURE, EMO, W/METAL FAN
173		1343931	SLEEVE
174		1343943	FIELD
175		1343932	M4.8 72MM PAN HD SCREW
176		1343538	M5.1 LOCK WASHER
177		905883	MOTOR HOUSING
178		1343936	BRUSH CAP
179		1313113	BRUSH
180		1343934	BRUSH HOLDER
181		1246008	M5 X 12MM HEX SOC SET SCREW
182		1246195	INT RET RING

EMO=EARLY MODELS ONLY  
CMO=CURRENT MODELS

\* NOT SHOWN ASSEMBLED

---

## STANDARD SAFETY EQUIPMENT

In order to promote tool safety, Delta Machinery strictly enforces the policy of repairing or replacing any damaged or missing standard safety equipment on machines presented to Delta Authorized Service Centers for service/repairs. Any product that is presented to a Delta Authorized Service Centers for repairs which contains missing or damaged standard safety equipment will have that equipment repaired or replaced and the customer will be charged for any such service/repairs. Customers can avoid such charges only if the missing safety component is supplied to the service center at the time of repair.

*This parts list is provided to aid in obtaining service parts. Copies of the instruction and maintenance literature can be obtained through the Delta Technical Publications Department or through your service outlet.*