

REPLACEMENT PARTS

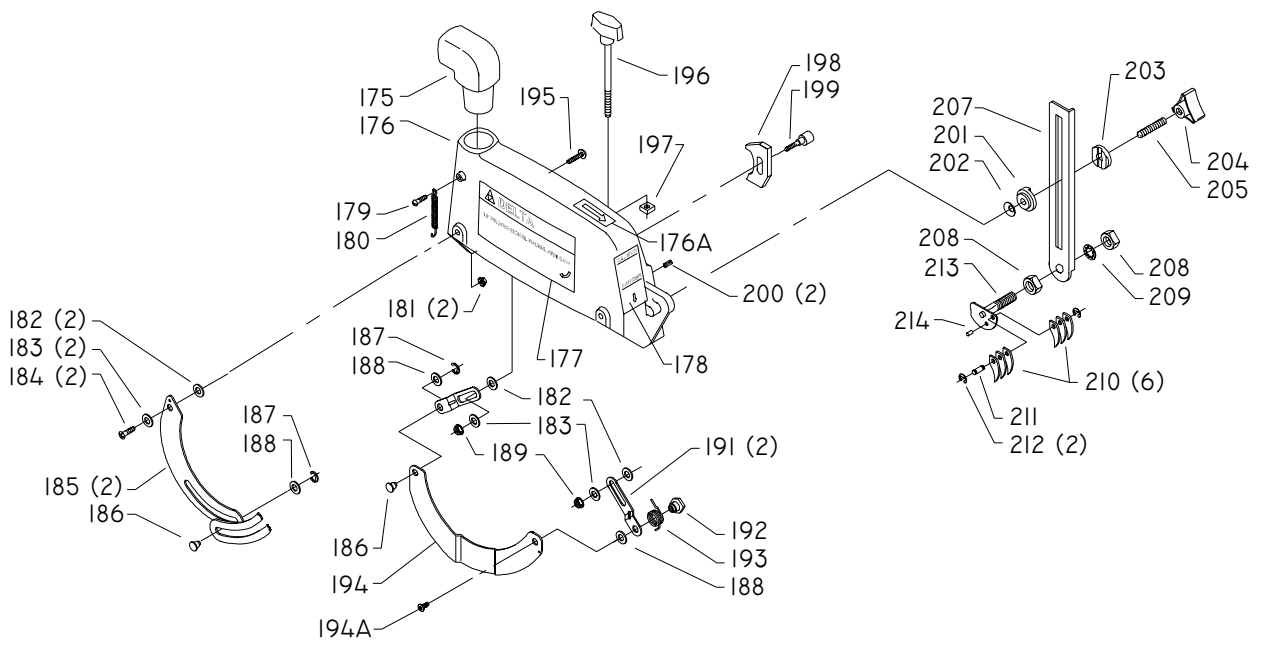
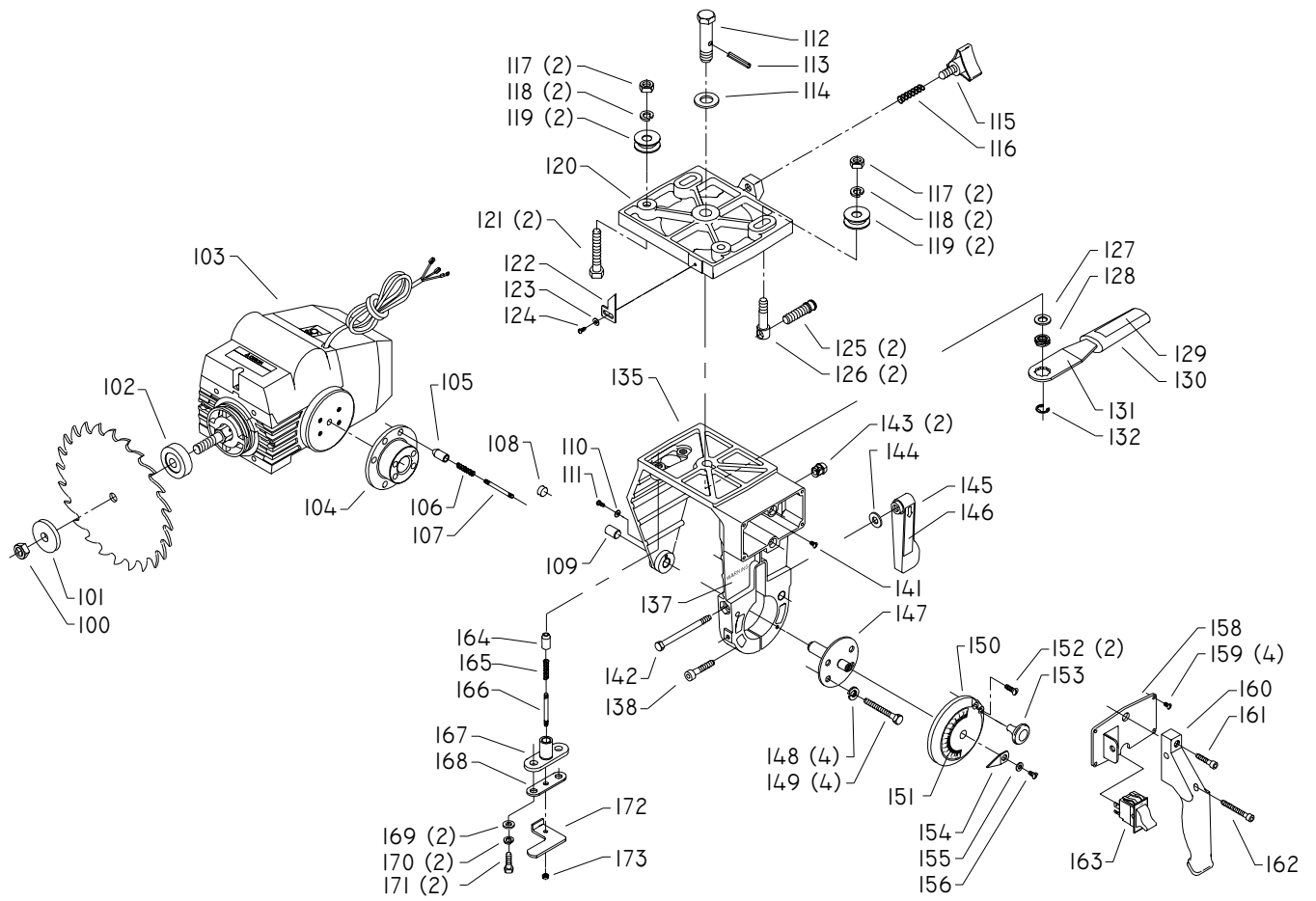
Ref.

<u>No.</u>	<u>Part No.</u>	<u>Description</u>
1	438-01-302-0384	CORD
2	438-01-011-0055	GROMMET
3	424-12-138-0002	KNOB
4	424-12-033-0004	CRANK
5	904-15-062-0283	EXT RET RING
6	901-01-063-1656	1/4-20 X 3/4" HEX HD SCREW
7	904-01-010-1604	5/16" FLAT WASHER
8	424-12-138-0005	KNOB
9	424-12-067-0007	HANDLE
10	424-12-079-0021	LOCK NUT
11	424-02-027-0010	CLAMP
12	432-02-122-0001	SPRING
13	904-15-010-7018	EXT RET RING
14	424-12-067-0008	LEVER
15	424-12-405-0001	GRIP
17	905-01-010-2732	5/32" X 1" SPRING PIN
18	920-76-033-1392	THRUST BEARING
19	424-02-027-0010	CLAMP
20	424-12-112-0013	SPECIAL SCREW
21A	438-01-009-0001	LOCK NUT
21B	438-01-004-0102	STRAIN RELIEF
22	422-02-074-0001	HOLE PLUG
23	424-12-428-0002	TRACK INCL.: (SEE NOTE A)
24	424-12-754-0023	DECAL
26	424-12-754-0016	DECAL
27	424-12-754-0022	DECAL
28	424-12-132-0013	SCALE
29	901-06-443-1806	#10-24 X 1/2" HEX HD SCREW
30	424-12-031-0015	COVER
32	901-03-010-3318	#10-32 X 3/8" HEX SOC HD SCREW
35	904-01-010-1610	FLAT WASHER
36	424-12-075-0006	POINTER
37	904-01-031-2934	1/4" FLAT WASHER
40	438-01-004-0015	CABLE CLAMP 5/16"
41	901-03-010-3318	#10-32 X 3/8" HEX SOC HD SCREW
45	424-12-122-0007	SPRING
46	424-12-071-0011	LOCK PIN
47	904-15-011-7116	EXT RET RING
50	424-12-331-0008	INDEX RING INCL.:
51	424-12-132-0015	SCALE
52	901-03-013-1698	5/16-18 X 2" HEX SOC HD SCREW
55	901-03-010-3350	5/16-18 X 1/2" HEX SOC HD SCREW LATE T1
56	424-12-330-0008	COLUMN ASSY, INCL.:
57	424-12-079-0020	RETAINING RING
58	424-12-004-0004	KEY
59	901-03-010-0755	1/4-20 X 3/4" HEX SOC HD SCREW
60	902-01-133-1529	1/4-20 FLANGE NUT

* NOT SHOWN ASSEMBLED

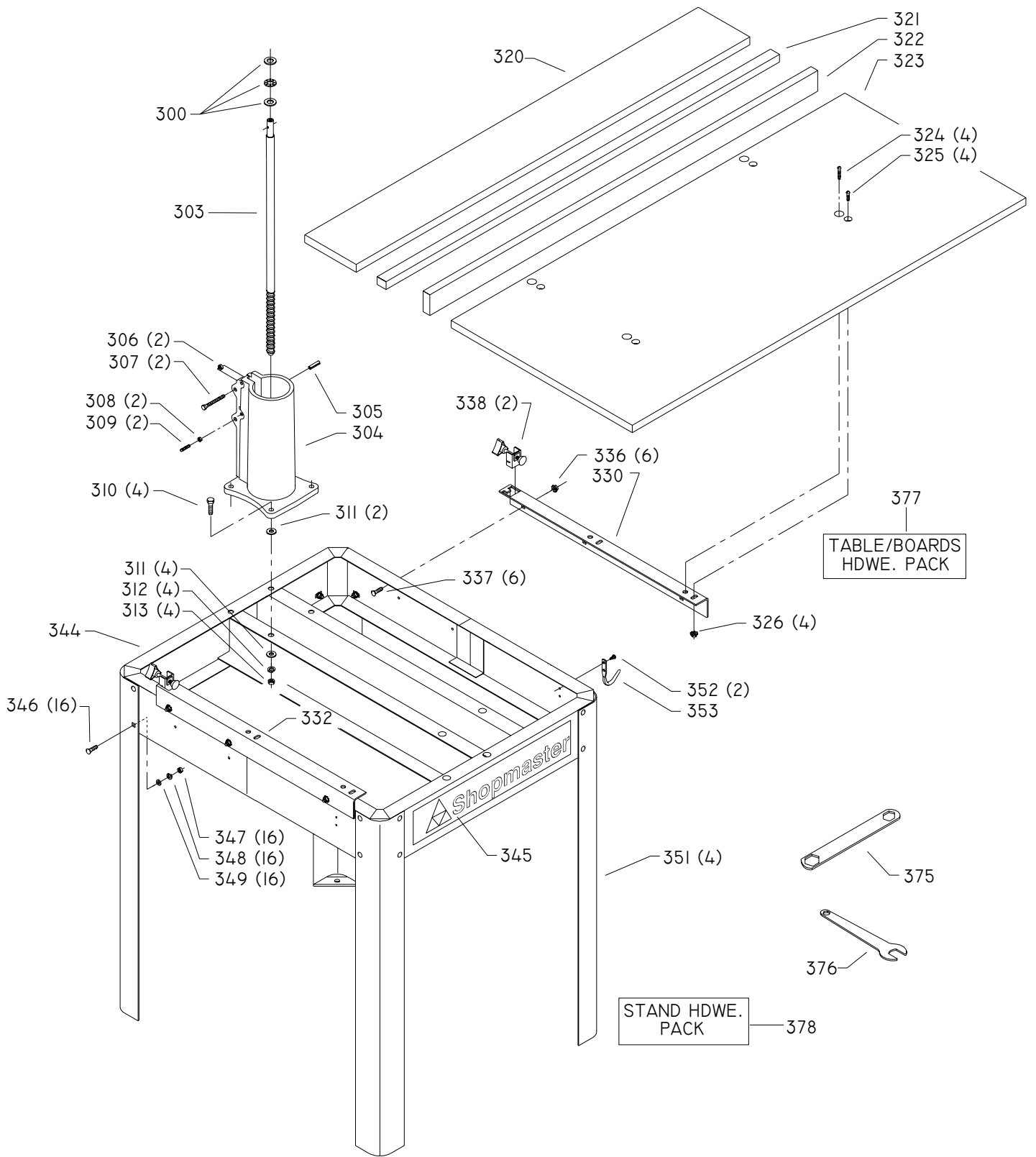
SERVICE NOTE:

A – For Track Arm removal guidance, See Product Service Bulletin ST-332.



REPLACEMENT PARTS

Ref.			Ref.		
<u>No.</u>	<u>Part No.</u>	<u>Description</u>	<u>No.</u>	<u>Part No.</u>	<u>Description</u>
100	424-12-079-0007	ARBOR NUT	166	424-12-111-0005	RIP REL EASE STUD
101	424-01-103-0001	ARBOR COLLAR	167	424-12-012-0001	BODY
102	424-12-103-0002	FLANGE	168	424-12-072-0011	INDEX PLATE
103	424-02-131-0014	MOTOR ASSY COMPLETE, CONST OF:	169	904-01-010-1620	FLAT WASHER
*	438-01-008-0075	COVER	170	904-02-010-1703	5/16" LOCK WASHER
*	438-01-008-0076	MOTOR HOUSING	171	901-01-060-0649	5/16-18 X 1" HEX HD SCREW
*	438-01-017-0214	OVERLOAD	172	424-12-067-0004	INDEX RELEASE
*	438-01-017-0215	SWITCH MODULE	173	902-01-120-1203	#10-32 HEX NUT
*	438-01-029-0024	RUN CAPACITOR	*	424-12-354-0014	BLADE GUARD ASSY. INCL.:
*	438-01-029-0025	START CAPACITOR	175	424-08-001-0001	DUST SPOUT
*	438-02-033-0016	BRAKE ASSY	176	424-12-354-0013	BLADE GUARD, INCL.:
104	424-12-095-0002	TRUNNION	176A	424-12-754-0012	DIRECTION ARROW
105	424-12-071-0006	INDEX PIN	177	424-12-754-0024	NAMEPLATE
106	424-12-122-0006	INDEX SPRING	178	424-12-752-0048	WARNING LABEL
107	424-12-111-0002	INDEX STUD	179	901-05-183-1142	#10-32 X 5/8" PAN HD SCREW
108	410-09-016-0004	BUMPER	180	424-12-122-0003	SPRING
109	424-12-071-0002	PIN	181	902-01-293-1240	1/4-20 KEPS NUT
110	904-01-010-1602	3/16" FLAT WASHER	182	424-12-104-0003	FLANGED SPACER
111	901-05-163-1126	#08-32 X 5/16" PAN HD SCREW	183	904-01-031-4993	FLAT WASHER
112	424-12-079-0019	BOLT	184	901-02-403-1131	1/4-20 X 7/8" TRUSS HD SCREW
113	905-01-010-6715	3/16" X 5/8" SPRING PIN	185	424-12-054-0002	FRONT LEAF GUARD
114	904-01-010-1636	FLAT WASHER	186	424-12-071-0004	PIN
115	424-12-138-0004	KNOB	187	904-15-062-0269	EXT RET RING
116	424-12-122-0004	SPRING	188	904-07-010-5571	FIBER WASHER
117	902-01-010-1300	5/16-18 HEX NUT	189	902-01-293-1240	1/4-20 KEPS NUT
118	904-02-010-1703	5/16" LOCK WASHER	191	424-12-135-0001	LINK
119	424-12-080-0004	BEARING	192	424-12-079-0010	NUT
120	424-12-057-0006	ROLLER HEAD	193	424-12-122-0002	SPRING
121	901-01-060-0609	5/16-18 X 1 1/2" HEX HD SCREW	194	424-12-354-0001	REAR LEAF GUARD ASSY, INCL.:
122	424-12-075-0006	POINTER	194A	901-03-040-8015	1/4-20 X 1/2" BUTTON HD SCREW
123	904-01-010-1610	FLAT WASHER	195	901-02-403-1131	1/4-20 X 7/8" TRUSS HD SCREW
124	901-06-143-1757	#10-24 X 3/8" PAN HD SCREW	196	432-09-106-0004	KNOB ASSY
125	424-12-112-0011	SPECIAL SCREW	197	902-02-040-1303	5/16-18 SQUARE NUT
126	424-12-112-0010	SPECIAL SCREW	198	424-12-027-0014	CLAMP CAM
127	904-01-010-1636	FLAT WASHER	199	424-12-112-0006	SHOLDER SCREW
128	424-12-079-0018	NUT	200	905-01-011-9301	3/16" X 3/8" SPRING PIN
129	424-12-405-0001	GRIP, INCL.:	201	424-12-060-0004	HOLDER
130	424-12-752-0016	WARNING LABEL	202	904-03-063-1134	3/8" SPRING WASHER
131	424-12-067-0001	LOCK LEVER	203	424-12-027-0006	CLAMP
132	904-15-063-1805	EXT RET RING	204	424-12-138-0003	KNOB
135	424-12-102-0008	YOKE INCL.:	205	901-06-693-1132	STUD
137	424-12-752-0049	WARNING LABEL	*	424-12-304-0002	SPLITTER BAR ASSY, INCL.:
138	901-03-010-0779	5/16-18 X 1 1/2" HEX SOC HD SCREW	207	424-12-004-0003	SPLITTER BAR
141	901-06-143-1757	#10-24 X 3/8" PAN HD SCREW	208	902-01-020-1227	1/2-20 JAM NUT
142	424-12-079-0003	LOCK SCREW	209	904-03-020-1773	1/2" INT TOOTH WASHER
143	438-01-004-0062	HEYCO BUSHING 5/8"	210	424-04-047-0002	ANTI-KICK FINGER
144	904-01-010-1605	3/8" FLAT WASHER	211	424-12-071-0010	PIN
145	424-12-327-0005	CLAMP HANDLE, INCL.:	212	904-15-062-0269	EXT RET RING
146	424-12-752-0017	LABEL	213	424-12-386-0001	SPLITTER ASSY
147	424-12-371-0001	TRUNNION PIN ASSY	214	905-01-011-9326	3/32" X 11/16" SPRING PIN
148	904-02-010-1703	5/16" LOCK WASHER	*		NOT SHOWN ASSEMBLED
149	901-01-060-0635	5/16-18 X 2" HEX HD SCREW	**		NOT SHOWN
150	424-12-331-0009	COVER ASSEMBLY INCL.:			
151	424-12-132-0014	BEVEL SCALE			
152	901-02-443-1195	#10-32 X 3/4" PAN HD SCREW			
153	424-12-060-0002	BEVEL INDEX KNOB			
154	424-12-075-0004	BEVEL POINTER			
155	904-01-010-1602	3/16" FLAT WASHER			
156	901-05-163-1126	#08-32 X 5/16" PAN HD SCREW			
158	424-12-072-0023	PLATE			
159	901-05-163-1126	#08-32 X 5/16" PAN HD SCREW			
160	424-12-067-0006	HANDLE			
161	901-03-010-3345	1/4-20 X 1" HEX SOC HD SCREW			
162	901-03-013-1026	1/4-20 X 1 3/4" HEX SOC HD SCREW			
163	438-01-017-0206	SWITCH			
164	424-12-071-0006	INDEX PIN			
165	424-12-122-0006	INDEX SPRING			



REPLACEMENT PARTS

Ref.	<u>No.</u>	<u>Part No.</u>	<u>Description</u>
	300	424-12-628-0017	BEARING KIT (KIT INCL.: 2 WASHER & 1 BEARING)
	303	424-12-112-0012	SPECIAL SCREW
	304	424-12-305-0007	COLUMN BASE, INCL:
	305	905-01-010-6749	5/16" X 1 1/2" SPRING PIN
	306	902-01-010-1300	5/16-18 HEX NUT
	307	424-12-112-0015	SPECIAL SCREW
	308	902-01-120-1034	1/4-20 HEX NUT
	309	424-12-112-0009	BRASS TIP SET SCREW
	310	901-01-060-0648	3/8-16 X 1 1/4" HEX HD SCREW
	311	904-01-010-1606	7/16" FLAT WASHER
	312	904-02-020-1704	3/8" LOCK WASHER
	313	902-01-010-5900	3/8-16 JAM NUT
	*	424-12-311-0010	TABLE BOARD SET INCL.:
	320	424-12-011-0010	BOARD
	321	424-12-011-0011	BOARD
	322	424-12-043-0006	FENCE
	323	424-12-011-0009	BOARD
	324	901-02-010-0535	1/4-20 X 1 1/4" ROUND HD SCREW
	325	901-02-010-0501	1/4-20 X 1" ROUND HD SCREW
	326	902-01-133-1529	1/4-20 FLANGE NUT
	330	424-12-389-0006	RIGHT SUPPORT
	332	424-12-389-0007	LEFT SUPPORT
	336	902-01-503-1514	5/16-18 FLANGE NUT
	337	901-11-023-1476	5/16-18 X 5/8" CARRIAGE HD SCREW
	338	424-12-314-0004	CLAMP
	344	424-12-305-0011	BASE ASSY. INCL.:
	345	424-02-754-0085	NAMEPLATE
	346	901-11-023-1476	5/16-18 X 5/8" CARRIAGE HD SCREW
	347	902-01-013-1859	5/16-18 HEX NUT
	348	904-03-033-1867	5/16" EXT TOOTH WASHER
	349	904-01-013-1855	FLAT WASHER
	351	424-12-366-0002	LEG
	352	901-05-213-1498	#10 X 1/2" HEX WASHER HD SCREW
	353	422-35-060-0001	WRENCH HOOK
	375	422-39-101-0001	WRENCH-7/8 X 1/2"
	376	955-01-050-1482	7/8" OPEN END - 1/2" BOX WRENCH
	377	424-12-725-0003	TABLE/BOARDS HDWE PACK
	378	424-12-725-0004	STAND HARDWARE PACK
	*		NOT SHOWN ASSEMBLED

STANDARD SAFETY EQUIPMENT

In order to promote tool safety, Delta Machinery strictly enforces the policy of repairing or replacing any damaged or missing standard safety equipment on machines presented to Delta Authorized Service Centers for service/repairs. Any product that is presented to a Delta Authorized Service Centers for repairs which contains missing or damaged standard safety equipment will have that equipment repaired or replaced and the customer will be charged for any such service/repairs. Customers can avoid such charges only if the missing safety component is supplied to the service center at the time of repair.

This parts list is provided to aid in obtaining service parts. Copies of the instruction and maintenance literature can be obtained through the Delta Technical Publications Department or through your service outlet.