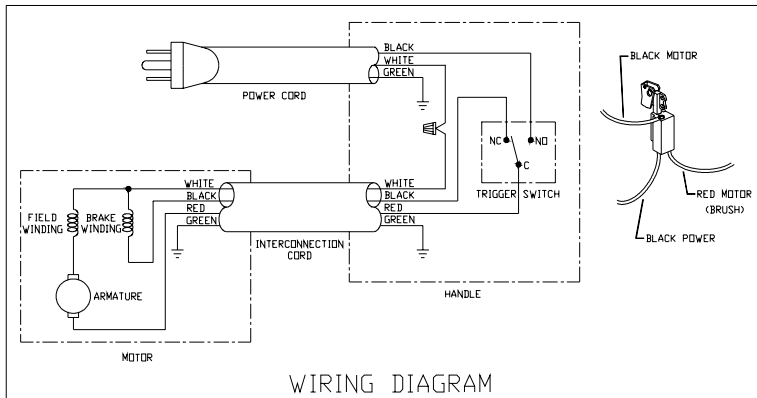
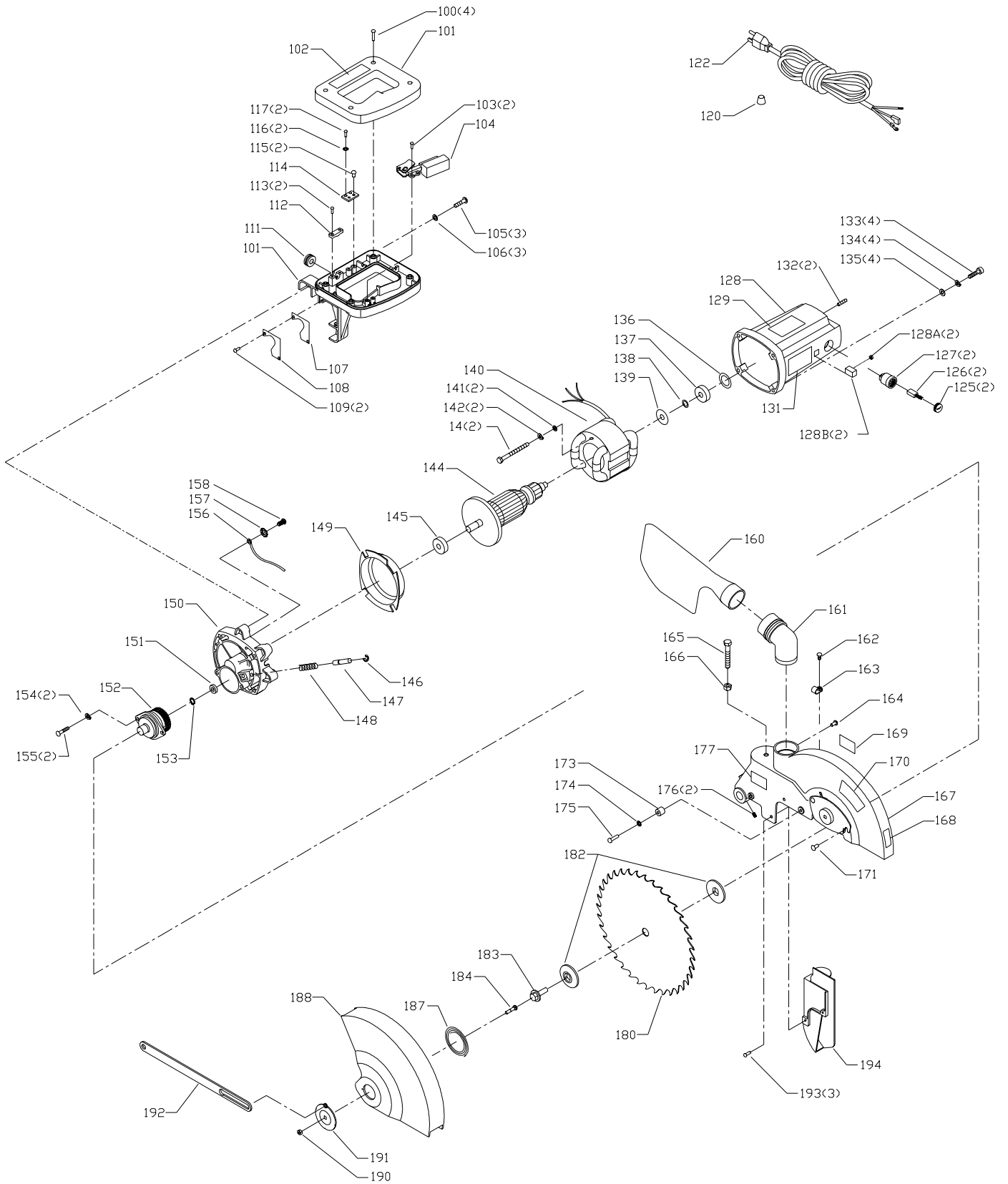


REPLACEMENT PARTS

Ref. No.	Part No.	Description
1	899882	HANDLE
2	1310311	M4 X 22MM SPRING PIN
3	1343545	M4.1 FLAT WASHER
4	1243501	M4 X 10MM CHEESE HD SCREW
5	1246045	M6 X 10MM CHEESE HD SCREW
6	1340622	M6.4 FLAT WASHER
7	1349493	PINCH GUARD
9	1343504	M5 LOCK NUT
10	1345461	SHAFT
11	1246051	M5 X 12MM HEX SOC HD SCREW
12	1349489	GUARD LINK PLATE
13	1349953	SPECIAL SCREW
14	900408	TRUNNION
15	1345419	PAD
16	1345533	PIN
17	1345534	O-RING
18	1313165	M16 LOCK NUT
19	899887	KNOB
20	1345463	RETURN SPRING
21	900236	CUP
22	1345465	PIN
23	1246004	M6 X 16MM HEX SOC HD SCREW
24	1243520	M6.1 LOCK WASHER
25	1345464	BRACKET
26	1310016	5MM DRIVE SCREW
27	899888	SCALE
28	1349810	STUD
29	1246016	M8 X 25MM HEX HD SCREW
30	1246157	M8.1 LOCK WASHER
31	1246127	M6 X 30MM HEX SOC SET SCREW
32	1246175	M6 X 30MM HEX HD SCREW
33	1243456	M6 HEX NUT
34	1345420	BRACKET
35	1246117	M4 X 10MM FLAT HD SCREW
36	899911	TABLE INSERT
38	1243581	M4 X 6MM HEX SOC SET SCREW
39	899912	TABLE
40	900502	HANDLE
45	1345468	POINTER
46	1343013	SPRING
47	1343642	M6 LOCK NUT
48	1342991	CLAMP SHAFT
49	1343642	M6 LOCK NUT
50	1342992	INDEX PIN
51	1342995	INDEX TRIGGER
52	1343009	SPRING
53	1342990	CLAMP
54	1346910	NYLON PAD

Ref. No.	Part No.	Description
55	1342973	PIVOT STUD
56	1343008	NYLON INSERT
58	900409	POINTER
59	1246102	M5.3 FLAT WASHER
60	1243394	M5 X 10MM CHEESE HD SCREW
61	899914	FENCE (RH)
62	1330147	M8 X 40MM HEX SOC HD SCREW
63	1246157	M8.1 LOCK WASHER
64	899915	FENCE (LH)
65	1330410	M5 X 20MM SPRING PIN
66	1342981	STABILIZER BAR
67	899916	BASE
68	1310016	5MM DRIVE SCREW
69	1343000	SCALE
70	1341947	M8 FLAT WASHER
71	1342123	M8 LOCK NUT
72	1246064	EXT RET RING
73	1345426	SHAFT
74	1345427	EXTENSION WING
75	1346291	M5.3 FLAT WASHER
76	1343538	M5.1 LOCK WASHER
77	1246047	M5 X 16MM CHEESE HD SCREW
78	36-221	CLAMP ASSY
88	1342906	1/2" BLADE WRENCH
89	1348257	WARNING LABEL (CIRCLE)
90	1330154	HEX WRENCH
91	900156	HARDWARE PACK





REPLACEMENT PARTS

<u>Ref.</u>	<u>No.</u>	<u>Part No.</u>	<u>Description</u>	<u>Ref.</u>	<u>No.</u>	<u>Part No.</u>	<u>Description</u>
	100	1350297	#08 X 3/4" PAN HD SCREW	151	1344003		NEEDLE BEARING
	101	904369	HANDLE SET	152	1345484		JACKSHAFT
	102	899917	WARNING LABEL	153	1341016		EXT RET RING
	103	1087576	#08 X 1/2" PAN HD SCREW	154	1243520		M6.1 LOCK WASHER
	104	899883	SWITCH	155	1341104		M6 X 20MM CHEESE HD SCREW
	105	1310157	M6 X 20MM PAN HD SCREW	156	1349871		GROUND WIRE
	106	900227	M6.4 FLAT WASHER	157	1320102		M4.3 EXT TOOTH WASHER
	107	1345428	INSULATOR	158	1243501		M4 X 10MM CHEESE HD SCREW
	108	1347301	COVER PLATE	160	900243		DUST BAG
	109	1344955	M3.9 X 8MM PAN HD SCREW	161	1345483		SPOUT
	111	1343019	3/8" GROMMET	162	1243394		M5 X 10MM CHEESE HD SCREW
	112	1345695	CORD CLAMP	163	438-01-004-0080		CABLE CLAMP 3/8"
	113	1087576	#08 X 1/2" PAN HD SCREW	164	1340406		M4.2 X 10MM PAN HD SCREW
	114	1343021	GROUND LUG	165	1345536		SPECIAL SCREW
	115	1087576	#08 X 1/2" PAN HD SCREW	166	1243398		M8 HEX NUT
	116	1320101	M5.3 EXT TOOTH WASHER	167	900235		UPPER GUARD ASSY, INCL:
	117	1310143	M5 X 8MM PAN HD SCREW	170	905876		NAMEPLATE
	120	438-01-007-0042	WIRE NUT	171	1345431		SPECIAL SCREW
	122	1345544	POWER CORD	173	1345430		GUARD BUMPER
	125	1345542	BRUSH CAP	174	1246102		M5.3 FLAT WASHER
	126	1348266	BRUSH	175	1310006		M5 X 20MM ROUND HD SCREW
	127	1345540	BRUSH HOLDER	176	1246137		M5 X 8MM HEX SOC SET SCREW
	128	1345470	HOUSING	180	OPTIONAL		BLADE (SEE NOTE A)
	128A	1343504	M5 LOCK NUT	182	1347150		FLANGE
	128B	1349622	BLOCK	183	1342989		ARBOR BOLT
	129	899925	WARNING LABEL	184	1343054		M5 X 10MM CARRIAGE HD SCREW
	131	905755	NAMEPLATE	187	1342998		SPRING
	132	1246043	M5 X 10MM HEX SOC SET SCREW	188	899898		LOWER BLADE GUARD
	133	1246091	M6 X 50MM CHEESE HD SCREW	190	1343504		M5 LOCK NUT
	134	1243520	M6.1 LOCK WASHER	191	1345433		PLATE
	135	1246140	M6.4 FLAT WASHER	192	1345418		LINK
	136	1343267	WAVE WASHER	193	1340406		M4.2 X 10MM PAN HD SCREW
	137	920-08-020-5352	BALL BEARING	194	1345434		DUST CHUTE
	138	1348661	SPECIAL WASHER				
	139	1348660	SPECIAL WASHER				
	140	1348262	FIELD				
	141	1346291	M5.3 FLAT WASHER				
	142	1343538	M5.1 LOCK WASHER				
	143	1310148	M5 X 60MM PAN HD SCREW				
	144	1345539	ARMATURE				
	145	400-08-139-0008	BALL BEARING				
	146	1347380	EXT RET RING				
	147	904378	LOCK PIN				
	148	1348261	SPRING				
	149	1347587	RING				
	150	899927	GEAR HOUSING				

NOTE A: USE CROSS CUT BLADES ONLY! DO NOT USE BLADES DESIGNED FOR RIPPING, COMBINATION BLADES OR BLADES WITH EXCESSIVE HOOK ANGLES

STANDARD SAFETY EQUIPMENT

In order to promote tool safety, Delta Machinery strictly enforces the policy of repairing or replacing any damaged or missing standard safety equipment on machines presented to Delta Authorized Service Centers for service/repairs. Any product which is presented to a Delta Authorized Service Centers for repairs which contains missing or damaged standard safety equipment will have that equipment repaired or replaced and the customer will be charged for any such service/repairs. Customers can avoid such charges only if the missing safety component is supplied to the service center at the time of repair.

This parts list is provided to aid in obtaining service parts. Copies of the instruction and maintenance literature can be obtained through the Delta Technical Publications Department or through your service outlet.