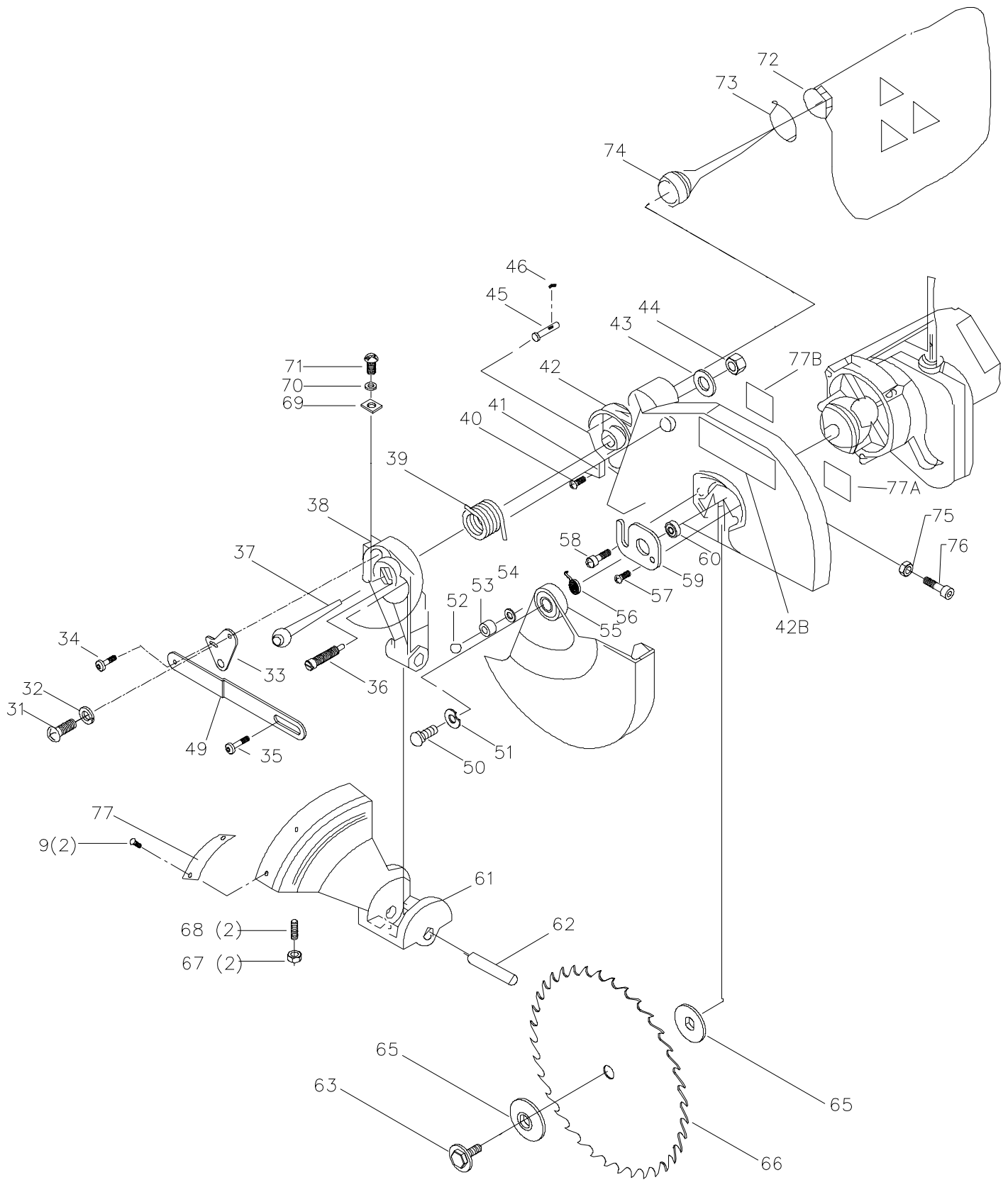


REPLACEMENT PARTS

Ref.

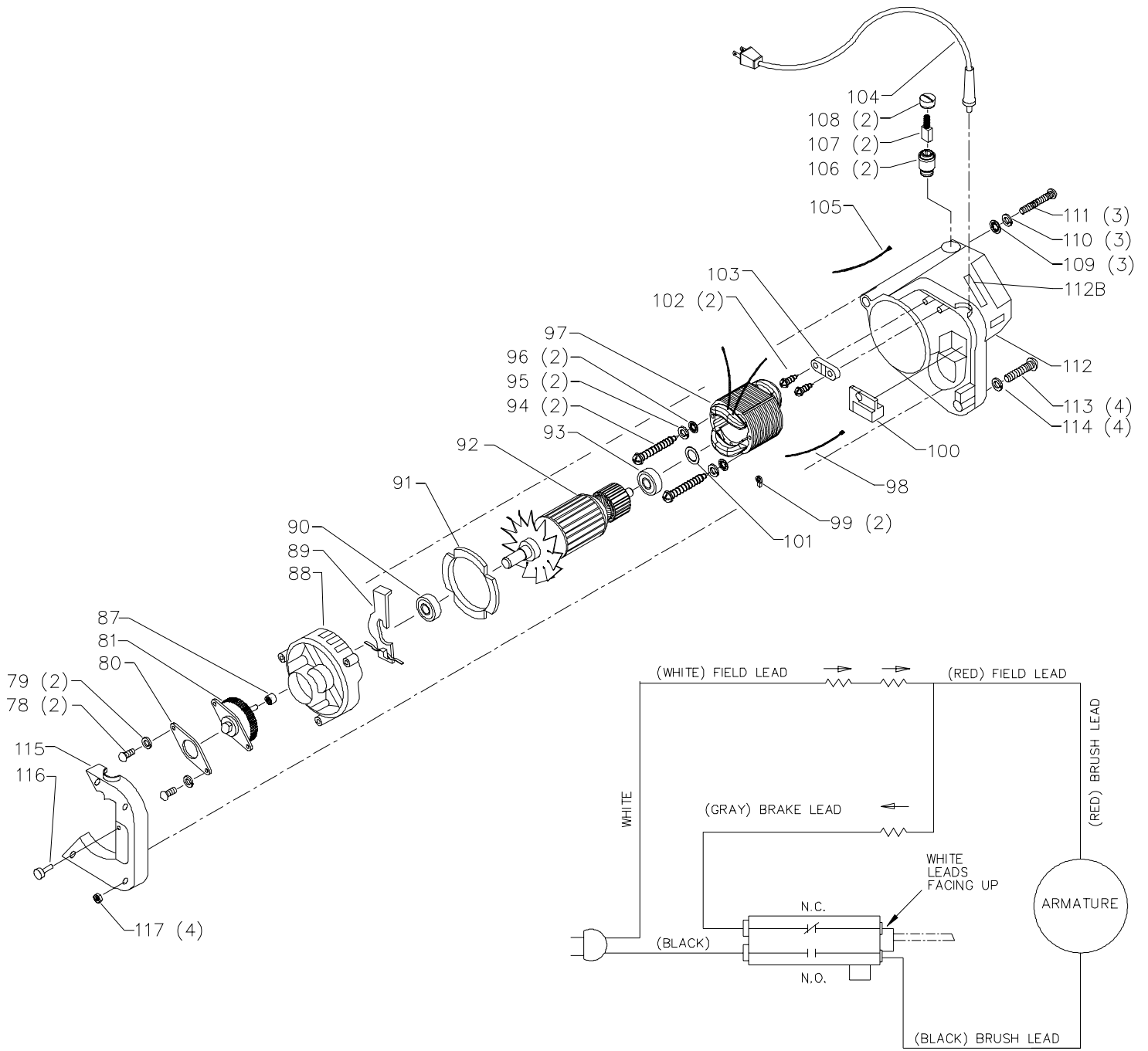
<u>No.</u>	<u>Part No.</u>	<u>Description</u>
1	1343375	SPECIAL SCREW
2	904-01-010-1605	3/8" FLAT WASHER
3	1343275	10.5MM WAVE WASHER
4	1343476	SCREW
5	1311003	M10 X 12MM HEX SOC SET SCREW
6	1343477	SPRING
7	1246197	BALL
8	899819	SCALE
9	1310016	DRIVE SCREW
10	899821	BASE
11	1343480	TABLE
12	899822	TABLE INSERT
13	899823	FENCE
14	1246140	6.4MM FLAT WASHER
15	1243520	6MM LOCK WASHER
16	1243336	M6 X 20MM HEX SOC HD SCREW
17	1246104	M6 X 25MM HEX SOC HD SCREW
18	1243520	6MM LOCK WASHER
19	1246140	M6.4 FLAT WASHER
20	1246140	6.4MM FLAT WASHER
21	1243520	6MM LOCK WASHER
22	899824	CLAMP LEVER
23	1343539	CLAMP KNOB
24	1343484	PLUG
25	432-07-101-0004	5MM ALLEN WRENCH
26	1330154	2MM ALLEN WRENCH
27	1342906	1/2" BLADE WRENCH
28	1348257	WARNING LABEL
29	900154	HARDWARE PACK



REPLACEMENT PARTS

<u>Ref.</u>	<u>No.</u>	<u>Part No.</u>	<u>Description</u>
	9	1310016	DRIVE SCREW
	31	1246002	M6 X 12MM CHEESE HD SCREW
	32	1243520	6MM LOCK WASHER
	33	900406	SUPPORT PLATE W/SPACER & RIVET
	34	900830	SCREW
	35	900831	SCREW
	36	1343486	SCREW
	37	1343487	BOLT
	38	899826	BRACKET
	39	1343489	SPRING
	40	1341235	M4 X 12MM CHEESE HD SCREW
	41	1343490	STOP
	42	899833	UPPER BLADE GUARD, INCL;
	42B	905876	NAMEPLATE
	43	n 893244	12MM FLAT WASHER
	44	1343492	M12 LOCK NUT
	45	900400	PIN, INCL;
	46	1343544	SPRING
	49	900257	LEVER
	50	1343540	M5 X 16MM CARRIAGE HD SCREW
	51	899834	COVER
	52	1343541	SHOULDER SCREW
	53	1343500	SPACER
	54	1246102	5.3MM FLAT WASHER
	55	900537	LOWER GUARD KIT, INCL.;
			Ref. 31, 33, 49, 50, 51, 52, 56, 59, & 60
	56	1343502	SPRING
	57	1310163	M5 X 16MM PAN HD SCREW
	58	1343499	SCREW
	59	899836	PLATE
	60	1343504	M5 LOCK NUT
	61	899837	BRACKET
	62	1343506	PIN
	63	1343507	BLADE BOLT
	65	1343508	BLADE FLANGE
	66	OPTIONAL	BLADE (NOTE A)
	67	1243569	M4 HEX NUT
	68	1341997	M4 X 20MM HEX SOC SET SCREW
	69	900401	POINTER
	70	1343545	4.1MM FLAT WASHER
	71	1243501	M4 X 10MM CHEESE HD SCREW
	72	900241	DUST BAG, INCL:
	73	1343511	CLAMP
	74	1343510	ADAPTER
	75	1243395	M5 HEX NUT
	76	1344933	M5 X 20MM HEX SOC HD SCREW
	77	899847	BEVEL SCALE
	77A	899845	WARNING LABEL
	77B	899827	WARNING LABEL

NOTE A:
 USE CROSS CUT BLADES ONLY! DO NOT USE BLADES
 DESIGNED FOR RIPPING, COMBINATION BLADES OR
 BLADES WITH EXCESSIVE HOOK ANGLES.



REPLACEMENT PARTS

<u>Ref.</u>	<u>Part No.</u>	<u>Description</u>
*	1343513	COMPLETE MOTOR, INCL.:
78	1310161	M4 X 18MM PAN HD SCREW
79	1243525	4.1MM LOCK WASHER
80	1343514	RETAINING PLATE
81	1343515	JACKSHAFT ASSY
87	1343259	BEARING
88	899840	HOUSING
89	900407	ARBOR LOCK
90	1313120	BEARING
91	1343518	BAFFLE
92	1343519	ARMATURE
93	1343520	BEARING
94	1343932	M4.8 X 72MM PAN HD SCREW
95	1343538	5MM LOCK WASHER
96	1343521	5MM LOCK WASHER
97	1343522	FIELD
98	1343523	LEAD
99	438-01-007-0042	WIRE NUT
100	899841	SWITCH
101	1343525	14.5MM WAVE WASHER
102	1343526	M4 X 15MM SELF TAP SCREW
103	1343527	CLAMP
104	1343528	CORD
105	1343529	LEAD
106	1343530	BRUSH HOLDER
107	1343531	BRUSH
108	1343532	BRUSH CAP
109	1343533	5MM LOCK WASHER
110	1343538	5MM LOCK WASHER
111	1341770	M5 X 72MM PAN HD SCREW
112	1343534	MOTOR HOUSING, INCL;
112B	1344358	WARNING LABEL, CF
113	1343535	M4 X 28MM PAN HD SCREW
114	1243525	4.1MM LOCK WASHER
115	1343536	HANDLE
116	899842	LOCK BUTTON
117	1243569	M4 HEX NUT
*	NOT SHOWN ASSEMBLED	

STANDARD SAFETY EQUIPMENT

In order to promote tool safety, Delta Machinery strictly enforces the policy of repairing or replacing any damaged or missing standard safety equipment on machines presented to Delta Authorized Service Centers for service/repairs. Any product that is presented to a Delta Authorized Service Center for repair with damaged or missing standard safety equipment will have that equipment repaired or replaced and the customer will be charged for any such service/repairs. Customers can avoid such charges only if the missing safety component is supplied to the service center at the time of repair.

This parts list is provided to aid in obtaining service parts. Copies of the instruction and maintenance literature can be obtained through the Delta Technical Publications Department, your service outlet, or by visiting the Delta Website @ www.deltamachinery.com.