

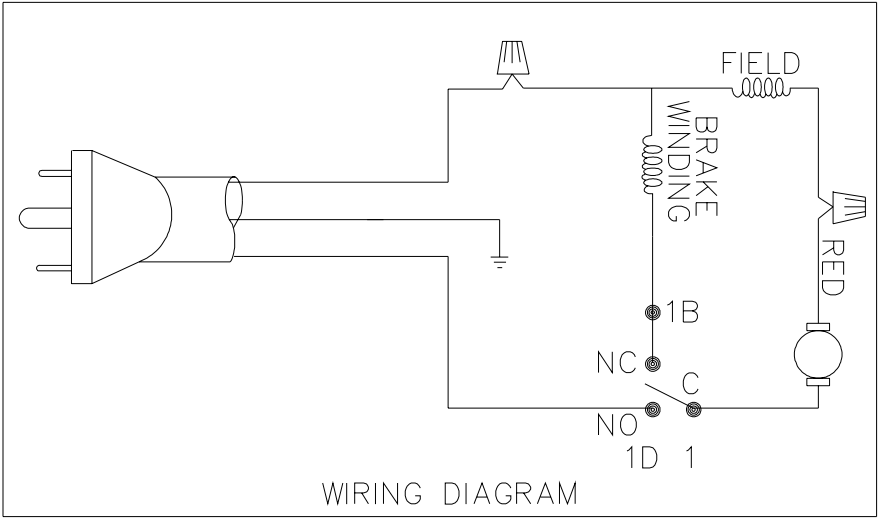
REPLACEMENT PARTS

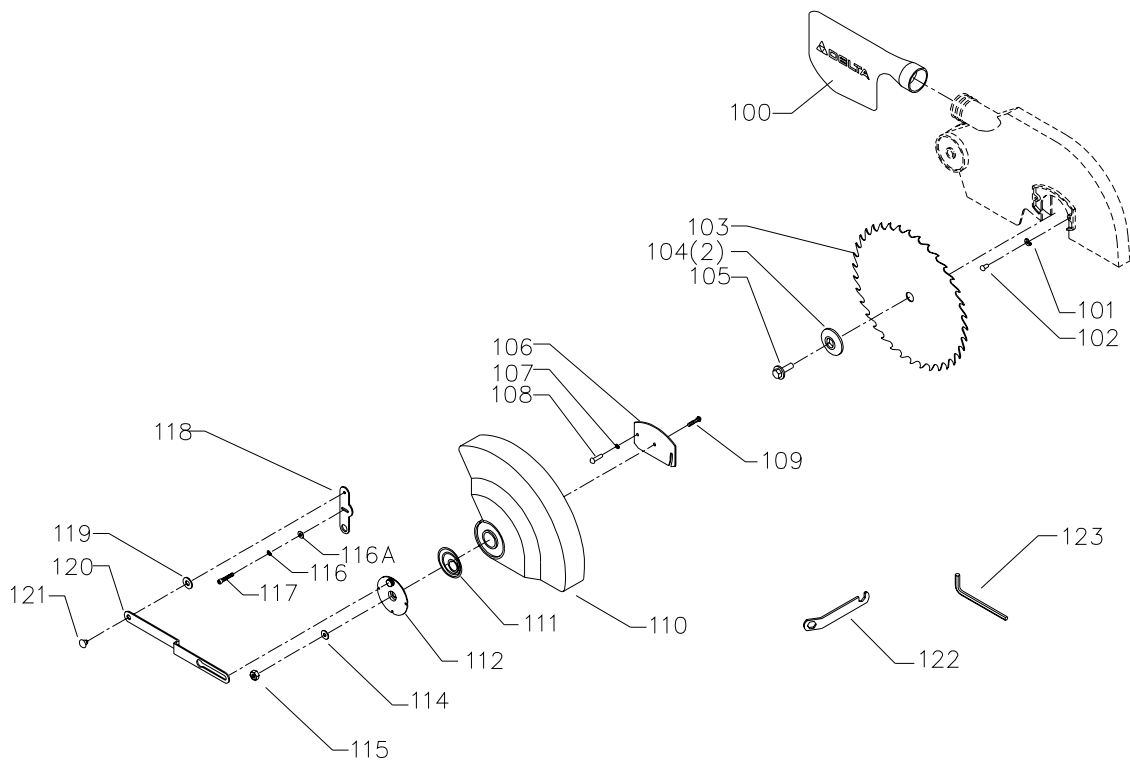
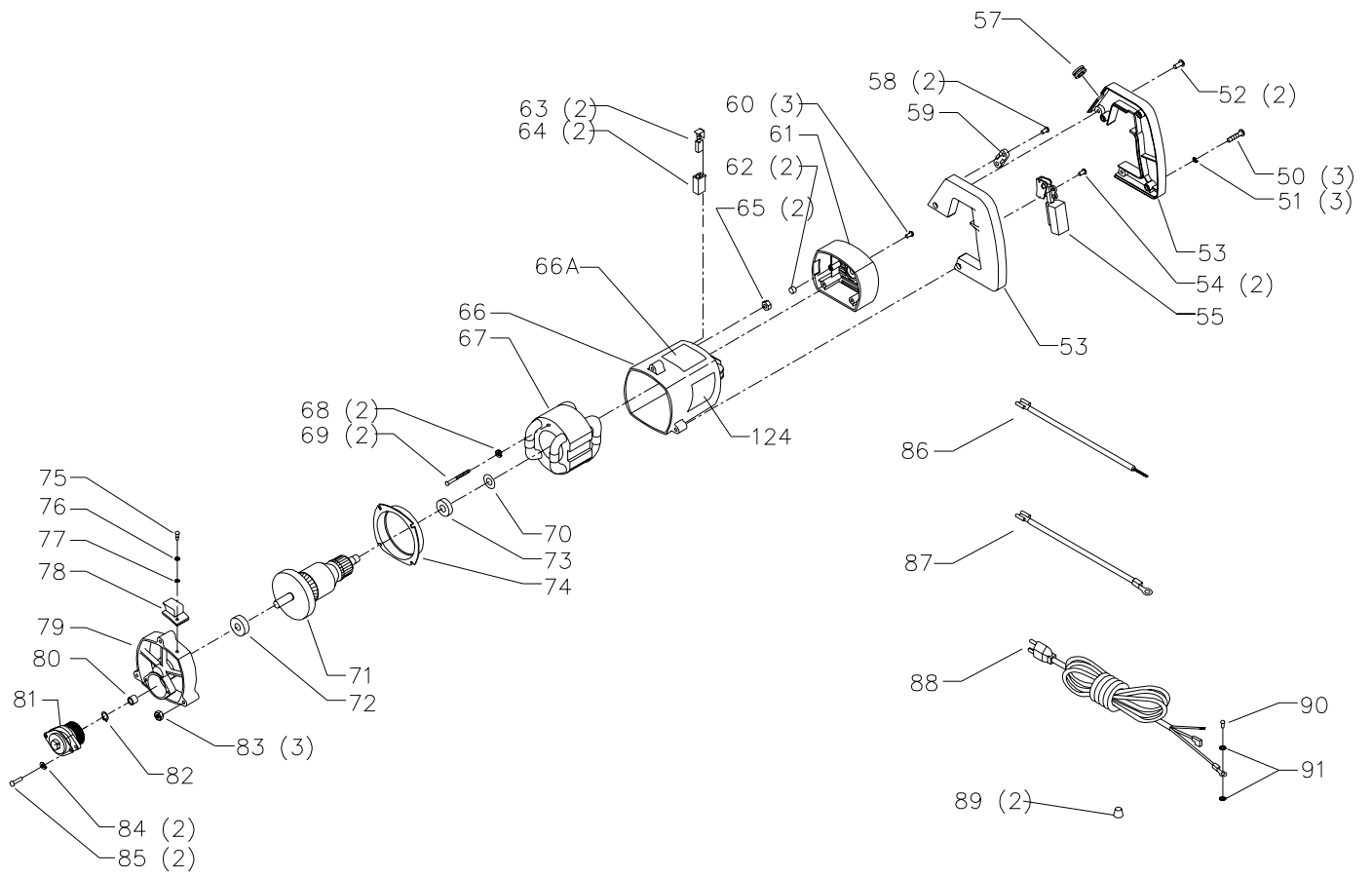
Ref.

No.	Part No.	Description
1	899853	UPPER GUARD ASSY, INCL:
1A	1246047	M5 X 16MM CHEESE HD SCREW
1B	1343538	M5.1 LOCK WASHER
1C	1349870	BUMPER, CANNOT FURNISH
1D	1343504	M5 LOCK NUT
4	1343492	M12 LOCK NUT
5	n 893244	M12 FLAT WASHER
6	1347128	STOP SCREW
7	1347127	PIN
8	1343544	SPRING
9	899856	BRACKET, CANNOT FURNISH
10	1347125	TABLE
11	1347131	SPRING
12	1243456	M6 HEX NUT
13	1330151	M6 X 35MM HEX HD SCREW
14	1347130	PIVOT BOLT
15	1243530	M8 X 30MM HEX SOC HD SCREW
16	1246157	M8.1 LOCK WASHER
17	1243530	M8 X 30MM HEX SOC HD SCREW
18	1246157	M8.1 LOCK WASHER
19	1243526	M8.4 FLAT WASHER
20	899857	FENCE
21	1330410	M5 X 20MM SPRING PIN
22	1347123	EXT BRACE
23	899858	BASE ASSY, INCL:

Ref.

No.	Part No.	Description
24	1310016	5MM DRIVE SCREW
25	899859	SCALE, CANNOT FURNISH
26	1347115	LOCK PLATE
27	1310159	M4 X 6MM PAN HD SCREW
28	1347116	POINTER
29	1347117	BRACKET
30	n 899913	HANDLE ASSY, INCL.:
31	900187	PAD
32	1243526	M8.4 FLAT WASHER
33	1246157	M8.1 LOCK WASHER
34	1246016	M8 X 25MM HEX HD SCREW
35	1347120	PIVOT STUD
36	1243502	M10 FLAT WASHER
37	1343275	M10.5 WAVE WASHER
38	1243502	M10 FLAT WASHER
39	1341996	M10 LOCK NUT
40	36-221	OPTIONAL CLAMP ASSY., INCL.:
49	1348257	WARNING LABEL
49A	900155	HARDWARE PACK





REPLACEMENT PARTS

Ref. No.	Part No.	Description	Ref. No.	Part No.	Description
*	1347132	MOTOR ASSY, T1, T2, INCL.:	91	1320102	M4.3 EXT TOOTH WASHER
50	900225	M5 X 72MM PAN HD SCREW	100	1347160	DUST BAG
51	1343538	M5.1 LOCK WASHER	101	1243525	M4.1 LOCK WASHER
52	1343051	M4.2 X 20MM PAN HD SCREW	102	1341235	M4 X 12MM CHEESE HD SCREW
53	903589	HANDLE SET	103	OPTIONAL	BLADE (NOTE B)
54	1340406	M4.2 X 10MM PAN HD SCREW	104	1347150	FLANGE
55	899863	SWITCH	105	n 1342989	BLADE BOLT
57	1343019	3/8" GROMMET	106	905889	INNER PLATE
58	1344952	M4.2 X 16MM PAN HD SCREW	107	1243525	M4.1 LOCK WASHER
59	1343527	CLAMP	108	1341235	M4 X 12MM CHEESE HD SCREW
60	1344952	M4.2 X 16MM PAN HD SCREW	109	1343054	M5 X 10MM CARRIAGE HD SCREW
61	1347144	END COVER	110	905890	LOWER GUARD, INCL.: REF. 106
62	1345702	PAD	111	1347154	SPRING
63	1347143	BRUSH	112	1347155	PLATE
64	1347142	BRUSH HOLDER	114	1246102	M5.3 FLAT WASHER
65	1343504	M5 LOCK NUT	115	1343504	M5 LOCK NUT
66	1347141	MOTOR HOUSING, INCL.:	116	1243520	M6.1 LOCK WASHER
66A	899864	WARNING LABEL	116A	n 900227	M6.4 FLAT WASHER
67	900305	FIELD	117	1246004	M6 X 16MM HEX SOC HD SCREW
68	1343538	M5.1 LOCK WASHER	118	1347159	BRACKET
69	1310148	M5 X 60MM PAN HD SCREW	119	1243526	M8.4 FLAT WASHER
70	1347139	WAVE WASHER	120	1347158	LINK
71	900306	ARMATURE ASSY, INCL.:	121	1347157	PIVOT SCREW
72	1310042	BEARING	122	1342906	1/2" BLADE WRENCH
73	1347137	BEARING	123	432-07-101-0004	5MM HEX WRENCH
74	1347138	FAN BAFFLE	124	905755	DEC PLATE
75	1341235	M4 X 12MM CHEESE HD SCREW	*		NOT SHOWN ASSEMBLED
76	1243525	M4.1 LOCK WASHER			
77	1343545	M4.1 FLAT WASHER			
78	1347135	COVER			
79	899866	HOUSING			
80	1343259	NEEDLE BEARING			
81	900308	JACKSHAFT ASSY, INCL.:			
82	1243497	EXT RET RING			
83	1243395	M5 HEX NUT (NOTE A)			
84	1243525	M4.1 LOCK WASHER			
85	1347162	M4 X 18MM PAN HD SCREW			
86	1347148	RED JUMPER			
87	1347161	BLACK JUMPER			
88	1347149	POWER CORD			
89	438-01-007-0042	WIRE NUT, T1, T2			
90	900226	M4 X 8MM PAN HD SCREW			

NOTE A: FOR SHIPPING PURPOSES ONLY!

NOTE B: USE CROSS CUT BLADES ONLY! DO NOT USE BLADES DESIGNED FOR RIPPING, COMBINATION BLADES OR BLADES WITH EXCESSIVE HOOK ANGLES!

STANDARD SAFETY EQUIPMENT

In order to promote tool safety, Delta Machinery strictly enforces the policy of repairing or replacing any damaged or missing standard safety equipment on machines presented to Delta Authorized Service Centers for service/repairs. Any product that is presented to a Delta Authorized Service Center for repair with damaged or missing standard safety equipment will have that equipment repaired or replaced and the customer will be charged for any such service/repairs. Customers can avoid such charges only if the missing safety component is supplied to the service center at the time of repair.

This parts list is provided to aid in obtaining service parts. Copies of the instruction and maintenance literature can be obtained through the Delta Technical Publications Department, your service outlet, or by visiting the Delta Website @ www.deltamachinery.com.