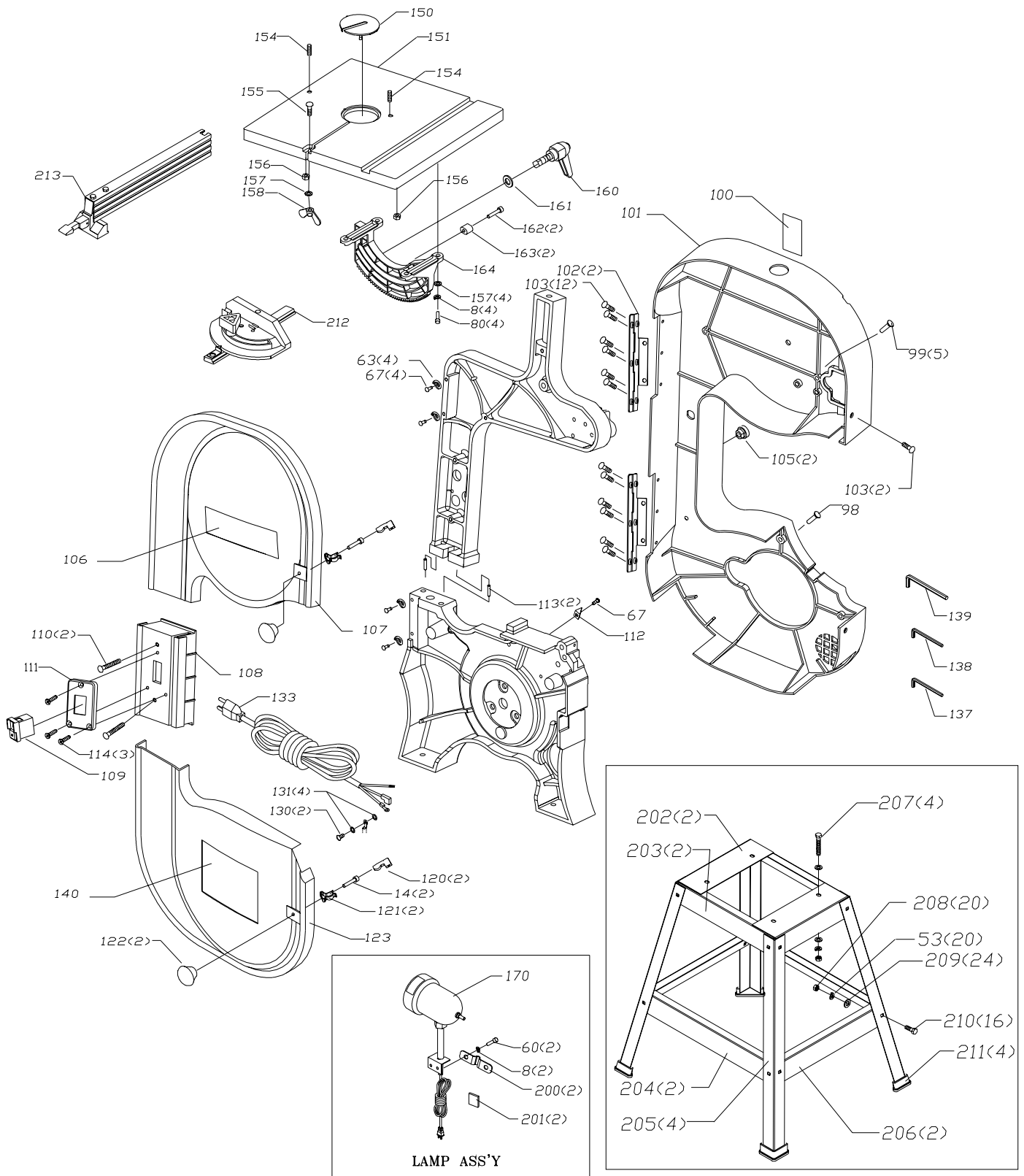


REPLACEMENT PARTS

Ref.			Ref.		
<u>No.</u>	<u>Part No.</u>	<u>Description</u>	<u>No.</u>	<u>Part No.</u>	<u>Description</u>
1	1320600	KNOB	42	900194	PINION KNOB
2	1346500	HOUSING	52	A03899	FOOT
3	1346503	SPRING	53	1246157	8MM LOCKWASHER
4	1346502	CLAMP	54	1310105	M8 X 1.25 X 16MM HEX HD SCREW
5	1347512	6-32 X 3/8" SET SCREW	55	1246017	M8 X 1.25 X 30MM HEX HD SCREW
6	1346501	PINION	60	1243336	M6 X 1 X 20MM HEX SOC HD SCREW
7	1246104	M6 X 1 X 25MM HEX SOC HD SCREW	63	1343538	M5 LOCK WASHER
8	1243520	WASHER	64	1347582	KEY
9	1346504	KNOB	65	A03900	LOWER WHEEL ASSY, INCL.: REF. 72
10	A03890	UPPER GUIDE	66	A03904	M5 WASHER
11	A03891	BLADE GUARD	67	A04946	M5 X .8 X 10MM SCREW, LH THREAD
12	900074	WARNING LABEL	68	BLADE	SEE CATALOG
13	n 1310159	M4 X .7 X 6MM PAN HD SCREW	69	1320166	RETAINING RING
14	1246095	M4 X .7 X 16MM HEX SOC HD SCREW	70	A03903	BEARING
15	1340243	M4 X .7 X 10MM HEX SOC HD SCREW	71	A03901	UPPER WHEEL ASSY , INCL.: REFS. 70, 72
16	1345032	SHAFT	72	A03902	TIRE
17	1320108	BEARING	73	A03905	SHAFT
18	1320165	RETAINING RING	74	1345015	HINGE
19	1341607	GUIDE	75	A04948	E-RING
20	1341608	BLADE GUIDE BRACKET	76	A04947	5.3 X 27.3MM ROLL PIN
25	A03892	KNOB	77	A03906	BUSHING
26	1346618	WASHER	78	1243339	M6 X 1 X 8MM HEX SOC SET SCREW
27	1341601	SPRING RETAINER	79	1345018	TENSION BRACKET
28	1345019	SPRING	81	1341617	BRUSH
29	A04224	BRACKET	82	1343545	M4.1 WASHER
30	A03895	LOWER FRAME	83	1243501	M4 X .7 X 10MM CHEESE HD SCREW
31	A03893	UPPER FRAME	84	1341618	BRUSH
32	A03894	KNOB	87	1246199	M12 X 1.75 X 60MM HEX HD SCREW
33	1345027	SPRING	88	1341946	M12 WASHER
34	A03896	1/2 HP MOTOR	89	893245	M12 WASHER
40	1341604	SCREW	90	1340478	M12 X 1.75 NUT
41	1341605	SPRING			



REPLACEMENT PARTS

Ref.			Ref.		
<u>No.</u>	<u>Part No.</u>	<u>Description</u>	<u>No.</u>	<u>Part No.</u>	<u>Description</u>
8	1243520	M6.1 WASHER	155	1246090	M6 X 1 X 30MM CHEESE HD SCREW
14	1246095	M4 X .7 X 16MM HEX SOC HD SCREW	156	1243456	M6 NUT
53	1246157	8MM LOCKWASHER	157	1310062	M6 FLAT WASHER
60	1243336	M6 X 1 X 20MM HEX SOC HD SCREW	158	1313281	WING NUT
63	1343538	M5 LOCK WASHER	160	A03923	LEVER
67	1342455	M5 X .8 X 10MM SCREW	161	1243502	M10 WASHER
80	1246004	M6 X 1 X 16MM HEX SOC HD SCREW	162	1246050	M5 X 0.8 X 25MM HEX SOC HD SCREW
98	1346453	M6 X 1 X 35MM FLAT HD SCREW	163	1341612	GUIDE
99	1344950	M6 X 1 X 20MM FLAT HD SCREW	164	A03879	TRUNNION
100	A03907	BLADE TENSION LABEL	170	1348937	LAMP
101	A03909	BACK COVER	200	912845	CORD CLAMP
102	A03910	HINGE	201	1348946	CORD RETAINER
103	1243501	M4 X .7 X 10MM CHEESE HD SCREW	202	A03882	BRACKET
105	1310057	STRAIN RELIEF	203	A03883	BRACKET
106	905726	DEC PLATE	204	A03884	BRACKET
107	A03911	UPPER COVER	205	A03885	LEG
108	A03912	SWITCH BOX	206	A03886	BRACKET
109	904121	SWITCH PUSH BUTTON	207	1246192	M08 X 1.25 X 45MM HEX HD SCREW
110	1348325	M6 X 1 X 60MM FLAT HD SCREW	208	1243398	M8 X 1.25 NUT
111	904120	SWITCH COVER	209	904-01-010-1606	WASHER
112	A03913	POINTER	210	1313325	M8 X 1.25 X 20MM CARRIAGE HD SCREW
113	A03914	6MM X 18MM PIN	211	427-99-048-0001	FOOT
114	A03915	M4 X 1 X 25MM FLAT HD SCREW	212	900222	MITER GAGE
120	A03916	BRACKET	213	n A03888	HARDWARE PACK
121	A03917	SPRING	214	n A03880	STAND HARDWARE PACK
122	A03918	KNOB			
123	A03919	LOWER DOOR COVER			
130	1243394	M5 X .8 X 10MM CHEESE HD SCREW			
131	1343521	M5 WASHER	215	28-181	FENCE
133	1341620	CORD			
137	428-06-101-0002	3MM, HEX WRENCH			
138	422-29-101-0002	4MM, HEX WRENCH			
139	428-07-101-0002	6MM, HEX WRENCH			
140	A03920	WARNING LABEL			
150	A03877	TABLE INSERT			
151	A03878	TABLE			
154	1344953	M6 X 1 X 20MM HEX SOC SET SCREW			

ACCESSORIES: (Optional)

STANDARD SAFETY EQUIPMENT

In order to promote tool safety, Delta Machinery strictly enforces the policy of repairing or replacing any damaged or missing standard safety equipment on machines presented to Delta Authorized Service Centers for service/repairs. Any product that is presented to a Delta Authorized Service Center for repair with damaged or missing standard safety equipment will have that equipment repaired or replaced and the customer will be charged for any such service/repairs. Customers can avoid such charges only if the missing safety component is supplied to the service center at the time of repair.

This parts list is provided to aid in obtaining service parts. Copies of the instruction and maintenance literature can be obtained through the Delta Technical Publications Department, your service outlet, or by visiting the Delta Website @ www.deltamachinery.com.