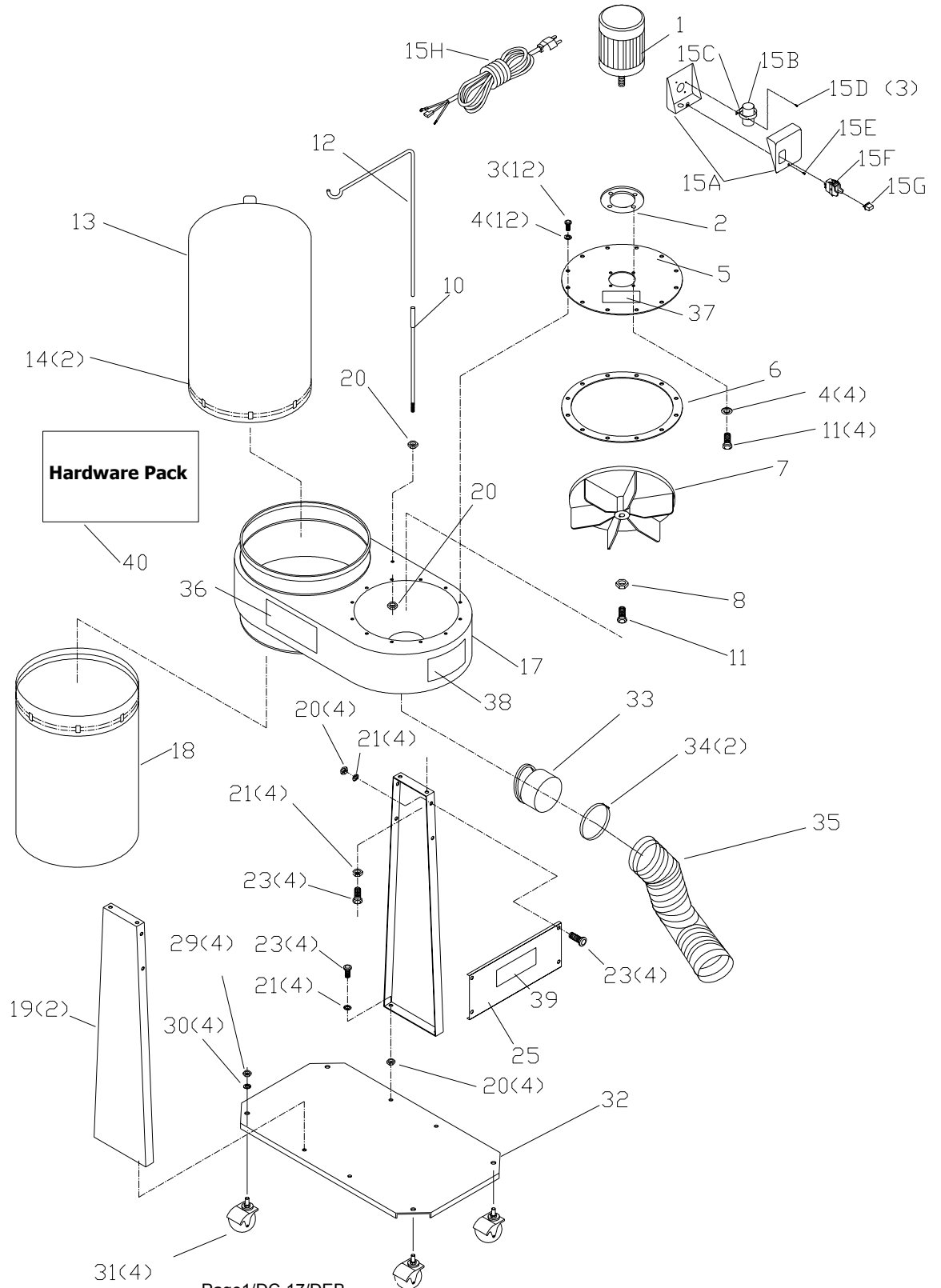




50-775  
1HP SINGLE STAGE  
DUST COLLECTOR

DC - 17  
PART NO. 902104  
DATED: 11/9/01



# REPLACEMENT PARTS

Ref.			Ref.		
<u>No.</u>	<u>Part No.</u>	<u>Description</u>	<u>No.</u>	<u>Part No.</u>	<u>Description</u>
1	902181	MOTOR	15H	1348466	POWER CORD
2	902178	GASKET	17	903045	BLOWER HOUSING
3	901-01-060-0611	HEX HD SCREW	18	902174	DUST BAG (BOTTOM)
4	1343390	LOCK WASHER	19	903046	SUPPORT
5	902179	BLOWER COVER	20	902-01-010-1300	HEX NUT
6	902180	GASKET	21	1343390	LOCK WASHER
7	902177	IMPELLER	23	901-01-060-0606	HEX HD SCREW
8	904-01-010-1604	FLAT WASHER	25	903047	BOARD
10	903044	LOWER HANGER	29	1350291	HEX NUT
11	901-01-060-0607	HEX HD SCREW	30	1350288	LOCK WASHER
12	902176	UPPER HANGER	31	903020	CASTER
13	902173	DUST BAG (TOP)	32	903048	BASE
14	1347641	CLAMP	33	1346521	CAP
15A	1348463	SWITCH HOUSING	34	1342476	CLAMP
15B	1348464	CAPACITOR	35	50-530	4" X 5' DUST HOSE
15C	1348465	CLAMP	36	902799	NAME PLATE
15D	901-06-121-7383	10-24 X 3/8" PAN HD SCREW	37	902737	ROTATION LABEL
15E	1320187	10-24 X 1/4" PAN HD SCREW	38	902781	WARNING LABEL
15F	1343759	SWITCH	39	902713	WARNING LABEL
15G	1343758	SWITCH KEY	40	n 902185	HARDWARE PACK

---

## STANDARD SAFETY EQUIPMENT

In order to promote tool safety, Delta Machinery strictly enforces the policy of repairing or replacing any damaged or missing standard safety equipment on machines presented to Delta Authorized Service Centers for service/repairs. Any product that is presented to a Delta Authorized Service Centers for repairs which contains missing or damaged standard safety equipment will have that equipment repaired or replaced and the customer will be charged for any such service/repairs. Customers can avoid such charges only if the missing safety component is supplied to the service center at the time of repair.

*This parts list is provided to aid in obtaining service parts. Copies of the instruction and maintenance literature can be obtained through the Delta Technical Publications Department or through your service outlet.*