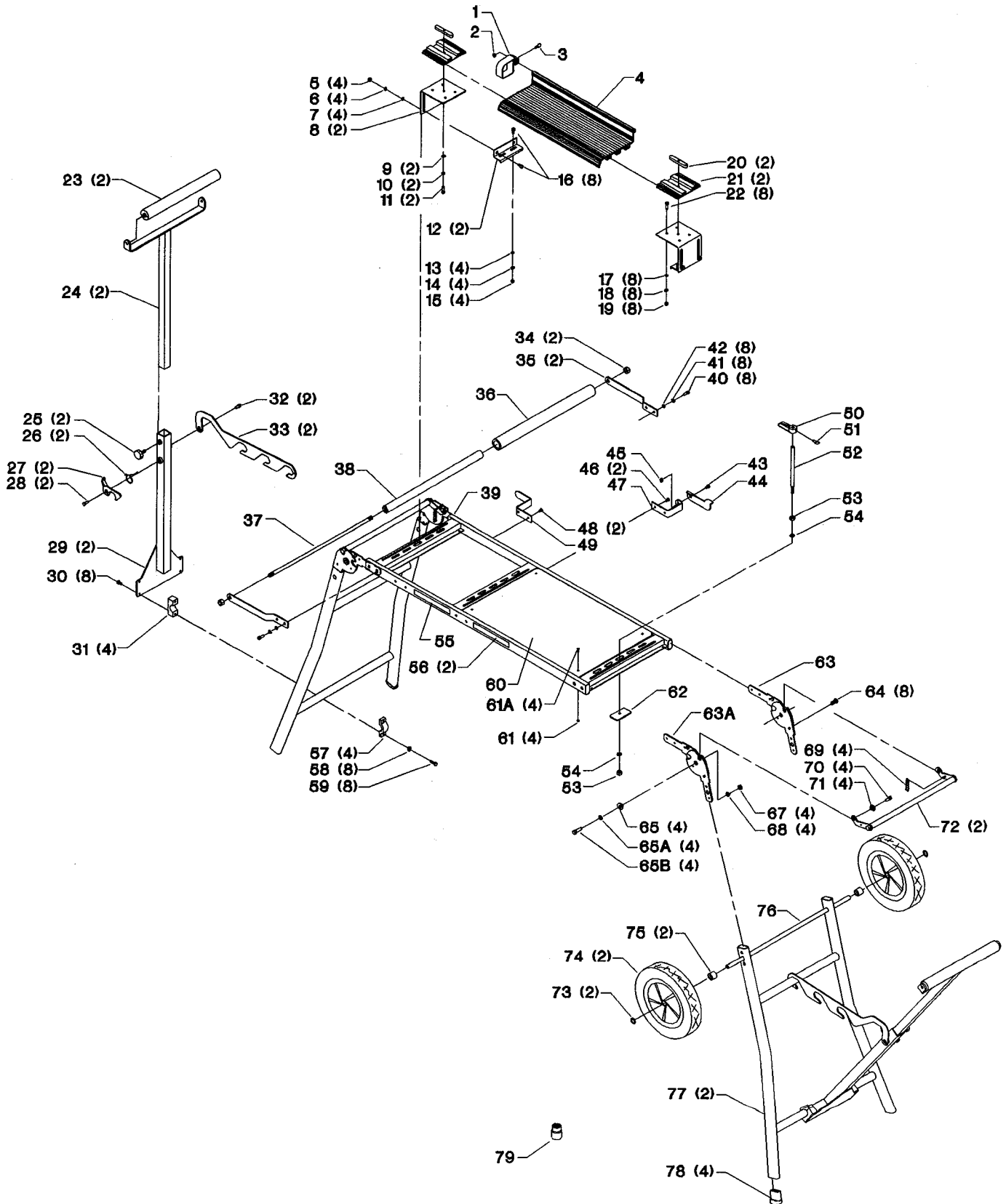


**50-175
KICKSTAND
PORTABLE WORK STAND**



REPLACEMENT PARTS

REF. NO.	PART NUMBER	DESCRIPTION	REF. NO.	PART NUMBER	DESCRIPTION
1	1346151	STOP ASSY, INCL;	48	1346165	(DIN 7380) M5 X 16MM BUTTON HD SCR
2	1243456	(DIN 934) M6 HEX NUT	49	1346166	CORD WRAP L.H.
3	1346152	(DIN 316) M6 X 12MM THUMB SCR	50	1346159	CLAMP
4	1346153	FENCE	51	1346152	(DIN 316) M6 X 12MM THUMB SCR
5	1243456	(DIN 934) M6 HEX NUT	52	1346160	ROD
6	1243520	(DIN 7980) M6.1 LOCK WASHER	53	1243456	(DIN 934) M6 HEX NUT
7	1246140	(DIN 125) M6.4 FLAT WASHER	54	1246140	(DIN 125) M6.4 FLAT WASHER
8	1346154	BRACKET	55	1346199	WARNING LABEL
9	1246140	(DIN 125) M6.4 FLAT WASHER	56	1346198	NAMEPLATE
10	1243520	(DIN 7980) M6.1 LOCK WASHER	57	1346170	CLAMP
11	1246014	(DIN 933) M6 X 15MM HEX HD SCR	58	1246140	(DIN 125) M6.4 FLAT WASHER
12	1346155	BRACKET	59	1346169	(DIN 7380) M6 X 20MM BUTTON HD SCR
13	1246140	(DIN 125) M6.4 FLAT WASHER	60	1346168	TABLE BOARD
14	1243520	(DIN 7980) M6.1 LOCK WASHER	61	1343504	(DIN 985) M5 LOCK NUT
15	1243456	(DIN 934) M6 HEX NUT	61A	1349499	(DIN 7380) M5 X 30MM BUTTON HD SCR
16	1346156	(DIN 603) M6 X 12MM CARRIAGE HD SCR	62	1346161	PLATE
17	1246140	(DIN 125) M6.4 FLAT WASHER	63	1346185	HINGE RH, INCL; (SEE NOTE A)
18	1243520	(DIN 7980) M6.1 LOCK WASHER	64	1346203	(DIN 912) M5 X 10MM HEX SOC HD SCR
19	1243456	(DIN 934) M6 HEX NUT			EARLY MODELS ONLY (SEE NOTE B)
20	1346157	KEY	65	1346184	BUSHING
21	1346158	PLATE	65A	1243502	(DIN 125) M10 FLAT WASHER
22	1246014	(DIN 933) M6 X 15MM HEX HD SCR	65B	1346183	(DIN 7380) M10 X 25MM BUTTON HD SCR
23	1346177	ROLLER SUPPORT	67	1341996	(DIN 985) M10 LOCK NUT
24	1346176	TUBE ASSY	68	1243502	(DIN 125) M10 FLAT WASHER
25	1346175	KNOB	63A	1346187	HINGE LH, INCL; (SEE NOTE A)
26	1346174	SPRING	64	1346203	(DIN 912) M5 X 10MM HEX SOC HD SCR
27	1346173	LATCH			EARLY MODELS ONLY (SEE NOTE B)
28	1345859	(DIN 7380) M6 X 12MM BUTTON HD SCR	65	1346184	BUSHING
29	1346172	TUBE ASSY	65A	1243502	(DIN 125) M10 FLAT WASHER
30	1345859	(DIN 7380) M6 X 12MM BUTTON HD SCR	65B	1346183	(DIN 7380) M10 X 25MM BUTTON HD SCR
31	1346171	BLOCK	67	1341996	(DIN 985) M10 LOCK NUT
32	1345859	(DIN 7380) M6 X 12MM BUTTON HD SCR	68	1243502	(DIN 125) M10 FLAT WASHER
33	1346178	BRACKET	69	1346189	SPRING
34	1341996	(DIN 985) M10 LOCK NUT	70	1345880	(DIN 7380) M6 X 16MM BUTTON HD SCR
35	1346182	STRAP	71	1346188	BUSHING
36	1346181	GRIP	72	1346201	LOCK ROD
37	1346179	ROD	73	1346191	PUSH NUT
38	1346180	HANDLE	74	1346204	WHEEL-PLASTIC HUB
39	1346167	FRAME			CURRENT MODELS ONLY
40	1246014	(DIN 933) M6 X 15MM HEX HD SCR	*	1346193	WHEEL-STEEL HUB
41	1243520	(DIN 7980) M6.1 LOCK WASHER			EARLY MODELS ONLY
42	1246140	(DIN 125) M6.4 FLAT WASHER	75	1346194	SPACER
43	1346163	(DIN 7380) M8 X 16MM BUTTON HD SCR	76	1346195	SHAFT
44	1346162	RETAINER	77	1346196	LEG ASSY
45	1342123	(DIN 985) M8 LOCK NUT	78	1346197	FOOT
46	1346165	(DIN 7380) M5 X 16MM BUTTON HD SCR	79	1346192	SOCKET 10MM
47	1346164	CORD WRAP R.H.			

* NOT SHOWN

NOTE A: When ordering replacement hinges, there are two types used. The same hinge is used diagonally from corner to corner. Be certain to order the correct Part Number.

NOTE B: Current models have a steel pin welded to the hinge and are not available separately.

STANDARD SAFETY EQUIPMENT

In order to promote tool safety, Delta International Machinery Corp. strictly enforces the policy of repairing or replacing any damaged or missing standard safety equipment on machines presented to Delta Authorized Service Centers for service/repair. Any product which is presented to a Delta Authorized Service Center for repairs which contains missing or damaged standard safety equipment will have that equipment repaired or replaced and the customer will be charged for any such service/repairs. Customers can avoid such charges only if the missing safety component is supplied to the service center at the time of repair.

This parts list is provided to aid in obtaining service parts. Copies of the instruction and maintenance literature can be obtained through the Delta Technical Publications Department or through your local service outlet.