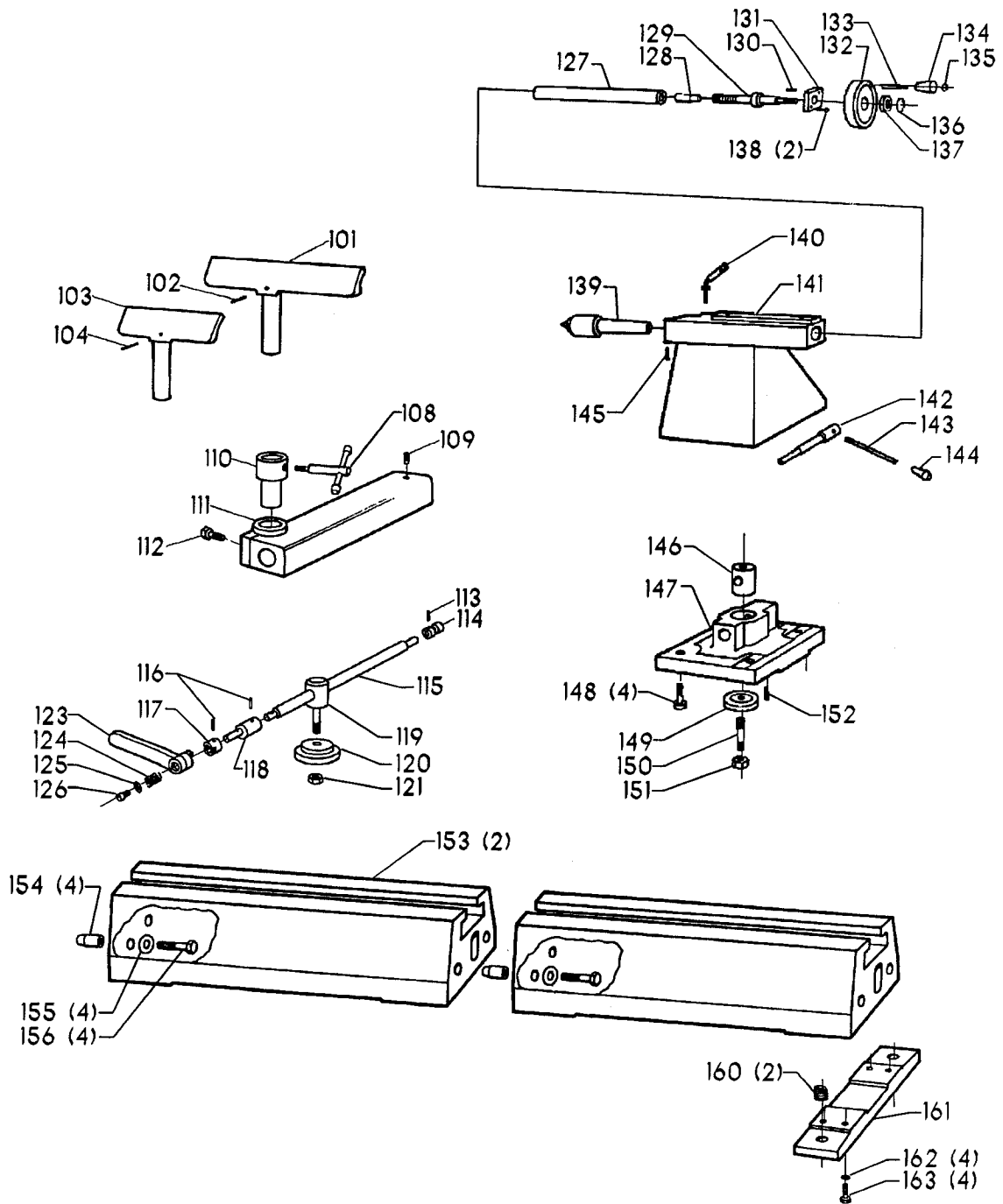


# REPLACEMENT PARTS

<u>REF. NO.</u>	<u>PART NUMBER</u>	<u>DESCRIPTION</u>	<u>REF. NO.</u>	<u>PART NUMBER</u>	<u>DESCRIPTION</u>
1	905-01-010-5075	1/4" X 3/4" SPRING PIN	48	1348820	COVER PLATE, INCL;
2	1348809	COVER, INCL;	49	1348780	ID PLATE
3	1348782	INDEX CHART	50	1348819	HEAD CASTING
4	1348808	SPRING	51	1243561	(DIN 912) M10 X 25MM HEX SOC HD SCR
5	1087794	RIVIT	52	1348829	BELT
6	1348806	DECAL	53	1341011	(DIN 916) M8 X 10MM HEX SOC SET SCR
7	1348807	LATCH	54	1348828	MOTOR PULLEY
8	1243306	(DIN 7991) M3 X 8MM FLAT HD SCR	55	1348786	BASE, INCL;
9	1246002	(DIN 84) M6 X 12MM CHEESE HD SCR	56	1348779	WARNING LABEL
10	1348805	COVER	57	1348787	BUSHING
11	1246002	(DIN 84) M6 X 12MM CHEESE HD SCR	58	1348794	KNOB
12	1348826	BRACKET	59	1243360	(DIN 7980) M10.2 LOCK WASHER
13	1348827	HINGE	60	1243502	(DIN 125) M10 FLAT WASHER
14	1246140	(DIN 125) M6.4 FLAT WASHER	61	1348795	STUD
15	1243456	(DIN 934) M6 HEX NUT	62	1348796	RETAINER
16	46-871	HAND WHEEL	63	1341153	(DIN 933) M8 X 12MM HEX HD SCR
17	1246056	(DIN 912) M6 X 12MM HEX SOC HD SCR	64	1243526	(DIN 125) M8.4 FLAT WASHER
18	1348816	BEARING CAP	65	1348802	SHAFT
19	1348817	BEARING NUT	66	1348797	SPRING
20	920-04-021-6559	BALL BEARING	67	1341153	(DIN 933) M8 X 12MM HEX HD SCR
21	1246004	(DIN 912) M6 X 16MM HEX SOC HD SCR	68	1243526	(DIN 125) M8.4 FLAT WASHER
22	1348887	NUT	69	1243526	(DIN 125) M8.4 FLAT WASHER
23	1348810	COVER, INCL;	70	1310105	(DIN 933) M8 X 16MM HEX HD SCR
24	1348781	SPEED CHART	71	1341011	(DIN 916) M8 X 10MM HEX SOC SET SCR
25	1243331	(DIN 912) M6 X 40MM HEX SOC HD SCR	72	1243398	(DIN 934) M8 HEX NUT
26	1348811	BLOCK	73	1246079	(DIN 933) M8 X 40MM HEX HD SCR
27	1348812	INDEX PIN	74	1243526	(DIN 125) M8.4 FLAT WASHER
28	1348813	SPRING	75	1348788	SHAFT
29	1348814	HOUSING	76	905-01-010-2706	3/16" X 1" SPRING PIN
30	905-01-010-2711	1/8" X 5/8" SPRING PIN	77	1348847	KNOB
31	1348815	KNOB	78	1348789	LEVER
32	1348821	SPINDLE PULLEY, INCL;	79	1348790	BLOCK
33	1348822	INDEX SCALE	80	1348793	RETAINER SCR
34	1348823	SPACER	81	1348792	PLUG
35	1330262	BALL BEARING	82	905-01-010-2706	3/16" X 1" SPRING PIN
36	1348824	KEY	83	1348798	PLATE
37	1348825	SPINDLE	84	1348799	PIN
38	1348816	BEARING CAP	85	1243526	(DIN 125) M8.4 FLAT WASHER
38A	1349963	SPACER	86	1243398	(DIN 934) M8 HEX NUT
39	1246056	(DIN 912) M6 X 12MM HEX SOC HD SCR	87	1348801	LINK
40	46-869	SPUR CENTER, INCL;	88	1341011	(DIN 916) M8 X 10MM HEX SOC SET SCR
41	1348830	CENTER	89	1348800	SHAFT
42	901-04-150-0208	1/4-20 X 1/4" HEX SOC SET SCR	90	1348804	ARM
43	46-865	3IN FACE PLATE	91	1348803	PLATE
44	46-866	6IN FACE PLATE	92	1348802	SHAFT
47	1348818	PLUG			

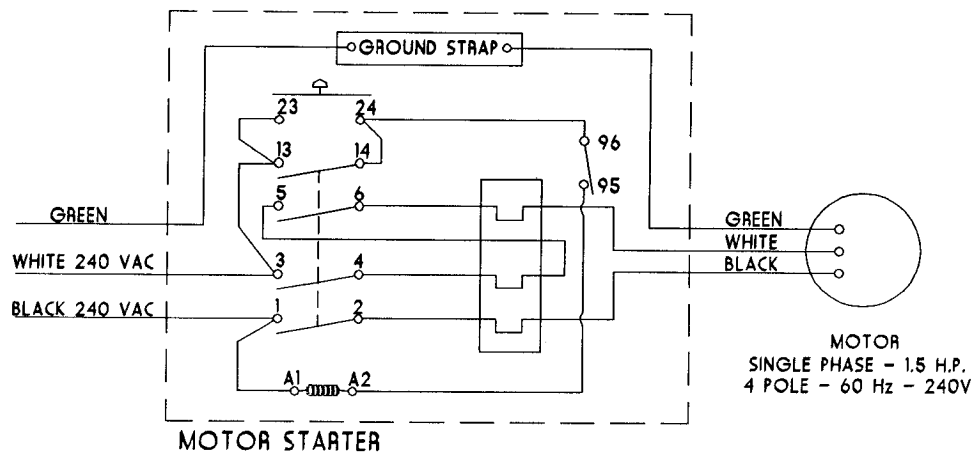
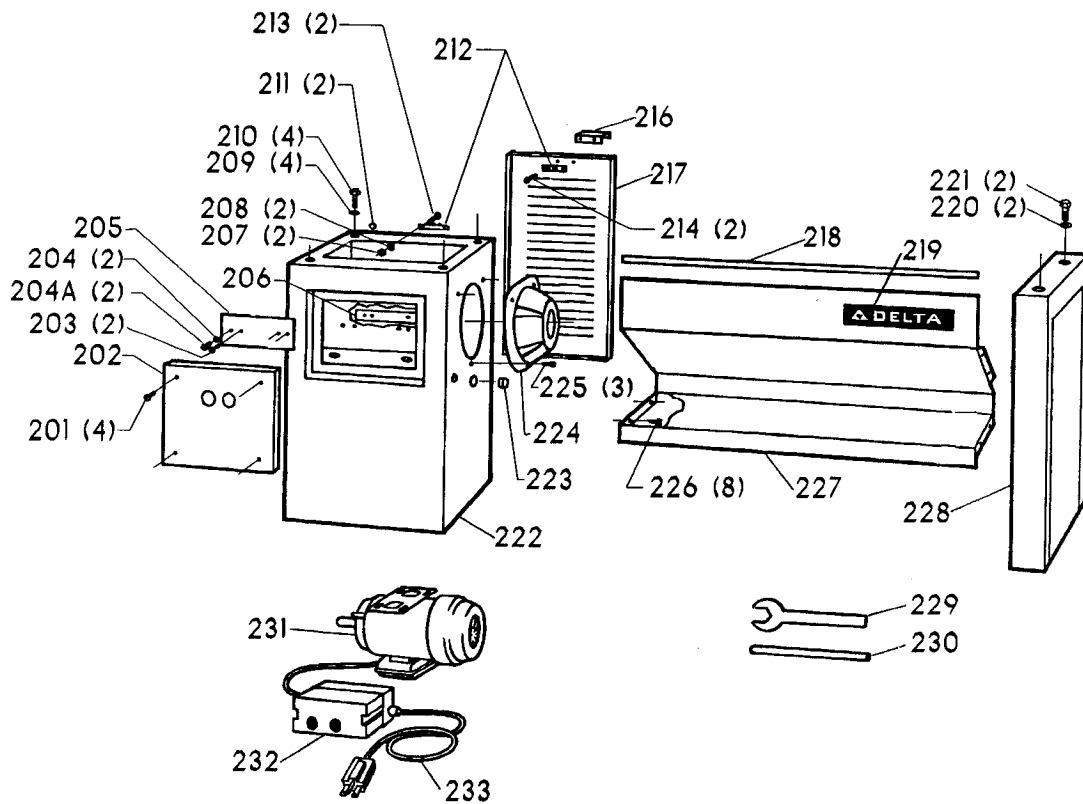


# REPLACEMENT PARTS

<u>REF. NO.</u>	<u>PART NUMBER</u>	<u>DESCRIPTION</u>	<u>REF. NO.</u>	<u>PART NUMBER</u>	<u>DESCRIPTION</u>
101	46-868	12IN TOOL REST, INCL;	132	1348839	HANDWHEEL
102	905-01-010-2715	3/16" X 1 1/8" SPRING PIN	133	1348840	STUD
103	46-867	6IN TOOL REST, INCL;	134	1348841	KNOB
104	905-01-010-2715	3/16" X 1 1/8" SPRING PIN	135	1348842	RETAINER
108	1348858	LOCK SCR	136	1348843	CAP
109	1348861	RETAINER SCR	137	1348844	LOCK NUT
110	1348856	SLEEVE	138	1246004	(DIN 912) M6 X 16MM HEX SOC HD SCR
111	1348857	BASE	139	46-870	BALL BEARING LIVE CENTER
112	1348859	SCR	140	1348854	LOCK LEVER
*	1349932	SHAFT ASSY, CONST OF	141	1348855	TAIL STOCK
113	905-01-010-2715	3/16" X 1 1/8" SPRING PIN	142	1348845	LOCK SHAFT
114	1348862	BUSHING	143	1348846	LEVER
115	1348863	SHAFT	144	1348847	KNOB
116	905-01-010-2715	3/16" X 1 1/8" SPRING PIN	145	905-01-011-9301	3/16" X 3/8" SPRING PIN
117	1348868	COLLAR	146	1348849	NUT
118	1348869	STUD	147	1348850	PLATE
119	1348864	SCR	148	1243561	(DIN 912) M10 X 25MM HEX SOC HD SC
120	1348851	WASHER	149	1348851	WASHER
121	1348853	LOCK NUT	150	1348852	STUD
123	1348867	HANDLE	151	1348853	LOCK NUT
124	1348866	SPRING	152	1348848	STUD
125	1340654	M6.4 FLAT WASHER	153	46-877	BED SECTION W/FT, INCL;
126	1345934	(DIN 7380) M6 X 12MM BUTTON HD SCR	154	1348831	PIN
127	1348834	RAM	155	1243502	(DIN 125) M10 FLAT WASHER
128	1348835	EJECTOR	156	1246020	(DIN 933) M10 X 80MM HEX HD SCR
129	1348836	SCR	160	1348832	LEVELER
130	1348837	KEY	161	1348833	FOOT
131	1348838	BLOCK	162	1243526	(DIN 125) M8.4 FLAT WASHER
			163	1246017	(DIN 933) M8 X 30MM HEX HD SCR

\* NOT SHOWN ASSEMBLED

# REPLACEMENT PARTS

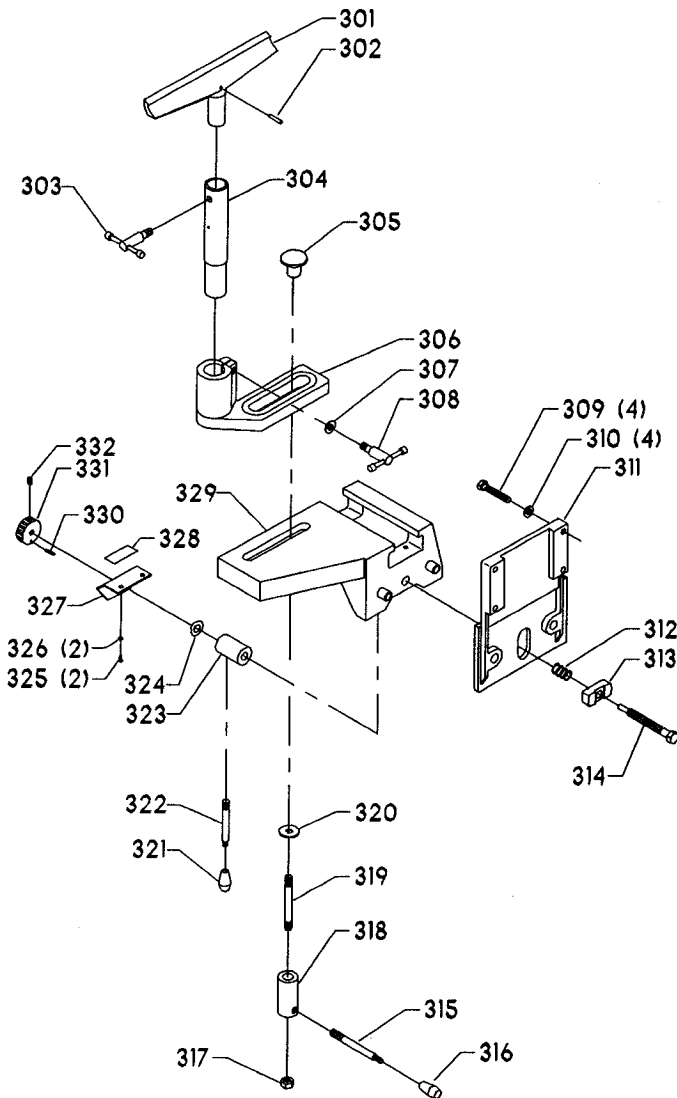


# REPLACEMENT PARTS

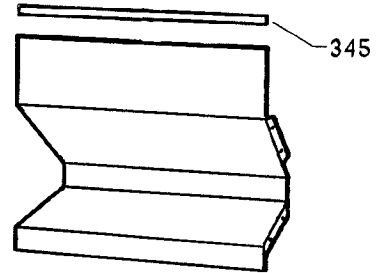
<u>REF. NO.</u>	<u>PART NUMBER</u>	<u>DESCRIPTION</u>
201	1348878	SCR
202	1348877	COVER
203	1341235	(DIN 84) M4 X 12MM CHEESE HD SCR
204	904-03-020-1775	3/16" INT TOOTH WASHER
204A	1341235	(DIN 84) M4 X 12MM CHEESE HD SCR
205	1348876	SWITCH PLATE
206	1348875	RETAINER
207	1341205	(DIN 934) M3 HEX NUT
208	904-01-010-1602	3/16" FLAT WASHER
209	1243502	(DIN 125) M10 FLAT WASHER
210	1246035	(DIN 933) M10 X 30MM HEX HD SCR
211	1348874	BUMPER
212	1348873	LATCH SET
213	1243378	(DIN 84) M3 X 15MM CHEESE HD SCR
214	1243306	(DIN 7991) M3 X 8MM FLAT HD SCR
216	1348882	HANDLE
217	1348883	DOOR
218	1348884	EDGE
219	1348778	NAMEPLATE
220	1243502	(DIN 125) M10 FLAT WASHER
221	1246035	(DIN 933) M10 X 30MM HEX HD SCR
222	1348879	FRONT BASE
223	1348880	HOLE PLUG
224	1348881	MOTOR COVER
225	1087576	#8 X 1/2" PAN HD SCR
226	1246002	(DIN 84) M6 X 12MM CHEESE HD SCR
227	46-874	SHELF-LONG
228	46-873	CABINET END
229	1348860	WRENCH
230	1348870	KNOCKOUT BAR
231	1348871	MOTOR 1 PHASE
232	1348872	CONTACTOR
233	49-514	POWER CORD

# REPLACEMENT PARTS

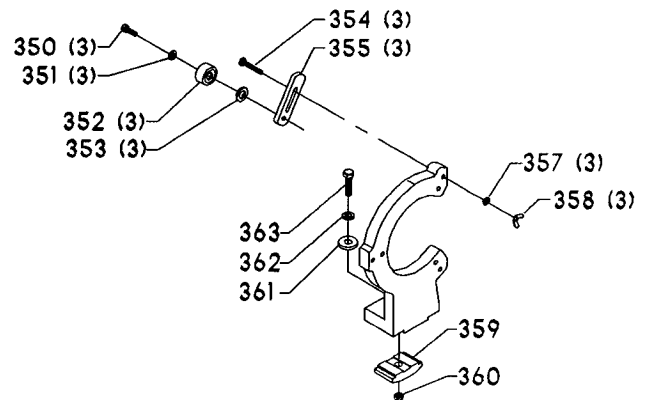
**46-872  
OUTBOARD BOWL TURNING  
ATTACHMENT**



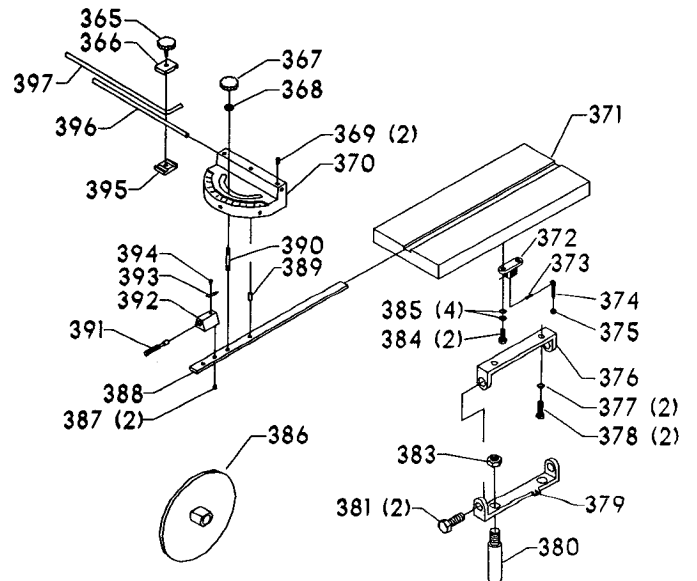
**46-875  
SHORT SHELF**



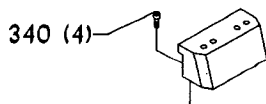
**46-881  
3 POINT STEADY REST**



**46-876  
SANDING DISC W/TABLE & MITER GAGE**



**46-890  
GAP BED FILLER BLOCK  
(SET OF 2)**



# REPLACEMENT PARTS

REF. NO.	PART NUMBER	DESCRIPTION	REF. NO.	PART NUMBER	DESCRIPTION
*	46-872	OUTBOARD BOWL TURN ATTACHMENT, CONST OF;	354	1342554	3/8-16 X 2" CARRIAGE HD SCR
301	46-868	12IN TOOL REST, INCL;	355	1349698	SLIDING ARM
302	905-01-010-2715	3/16" X 1 1/8" SPRING PIN	357	904-01-031-7706	3/8" FLAT WASHER
303	1349700	HANDLE	358	902-04-010-1404	3/8-16 WING NUT
304	1349701	SHAFT	359	1349696	ADJUSTMENT BLOCK
305	1349702	SPECIAL NUT	360	902-01-010-1282	1/2-13 HEX NUT
306	1349703	ADJUSTING BRACKET	361	904-01-010-1611	13/16" FLAT WASHER
307	904-01-031-5734	FLAT WASHER	362	904-01-021-3578	FLAT WASHER
308	1349704	HANDLE	363	901-01-060-3133	1/2-13 X 3" HEX HD SCR
309	1341229	(DIN 933) M10 X 50MM HEX HD SCR	*	46-876	SANDING DISK W/TABLE & MITER GAGE, CONST OF;
310	1243502	(DIN 125) M10 FLAT WASHER	365	1349723	KNOB
311	1349705	PLATE	366	1349724	UPPER LOCK PLATE
312	1349706	SPRING	367	1349726	KNOB
313	1349707	LOCKING BLOCK	368	904-01-031-5655	FLAT WASHER
314	1349708	LOCKING SCR	369	1342527	5/16-18 X 3/8" HEX SOC SET SCR
315	1349711	THREADED ROD	370	1349727	GAGE
316	1349712	KNOB	371	1349728	TABLE
317	1349714	(DIN 934) M12 HEX NUT	372	1349740	MOUNTING BRACKET
318	1349710	TUBE	373	905-01-010-5075	1/4" X 3/4" SPRING PIN
319	1349709	THREADED ROD	374	1349738	10-24 X 2.0 EYE SCR
320	904-01-010-1608	5/8" FLAT WASHER	375	1349929	#10-24 LOCK NUT
321	1349712	KNOB	376	1349734	UPPER ADJUSTMENT BRACKET
322	1349715	THREADED ROD	377	904-03-020-1750	5/16" INT TOOTH WASHER
323	1349713	TUBE	378	901-01-060-0607	5/16-18 X 3/4" HEX HD SCR
324	1313164	(DIN 137B) M17 WAVE WASHER	379	1349736	LOWER ADJUSTMENT BRACKET
325	901-02-010-0561	#10-32 X 3/8" ROUND HD SCR	380	1349735	SUPPORT TUBE
326	904-01-010-1609	FLAT WASHER	381	901-01-060-0671	1/2-20 X 1" HEX HD SCR
327	1349716	SUPPORT	383	902-01-120-1034	1/4-20 HEX NUT
328	1349719	ENGAGE LABEL	384	901-01-060-0605	5/16-18 X 1/2" HEX HD SCR
329	1349720	OUTBOARD TABLE	385	904-03-020-1750	5/16" INT TOOTH WASHER
330	905-01-010-2733	5/32" X 7/8" SPRING PIN	386	1349737	SANDING DISK
331	1349718	HANDLE	387	1320187	#10-24 X 1/4" PAN HD SCR
332	1330200	(DIN 916) M8 X 12MM HEX SOC SET SCR	388	1349742	MITER GAGE BAR
*	46-890	GAP BED FILLER BLOCK (SET OF 2), INCL;	389	1349729	STUD
340	1246052	(DIN 912) M10 X 35MM HEX SOC HD SCR	390	1349733	THREADED STUD
*	46-875	SHORT SHELF, INCL;	391	1349730	LOCK STUD
345	1349741	EDGE	392	1349731	BLOCK
349	46-881	3 POINT STEADY REST, CONST OF;	393	1349732	POINTER
350	901-01-063-1755	3/8-16 X 3/4" HEX HD SCR	394	901-06-121-7383	#10-24 X 3/8" PAN HD SCR
351	904-01-031-6202	FLAT WASHER	395	1349725	LOWER LOCK PLATE
352	1349699	ROLLER ASSY	396	1349722	BAR
353	904-01-010-1638	FLAT WASHER	397	1349721	STOP BAR

\* NOT SHOWN ASSEMBLED

### STANDARD SAFETY EQUIPMENT

In order to promote tool safety, Delta International Machinery Corp. strictly enforces the policy of repairing or replacing any damaged or missing standard safety equipment on machines presented to Delta Authorized Service Centers for service/repair. Any product which is presented to a Delta Authorized Service Center for repairs which contains missing or damaged standard safety equipment will have that equipment repaired or replaced and the customer will be charged for any such service/repairs. Customers can avoid such charges only if the missing safety component is supplied to the service center at the time of repair.

This parts list is provided to aid in obtaining service parts. Copies of the instruction and maintenance literature can be obtained through the Delta Technical Publications Department or through your local service outlet.