

REPLACEMENT PARTS

REF. NO.	PART NO.	DESCRIPTION	REF. NO.	PART NO.	DESCRIPTION
1	1330212	Cover	48	901-04-190-9412	1/4-28 x 3/8" Special Screw
2	1330230	Locking Screw	49	1330234	Ram, Incl:
3	1330224	Retaining Nut	50	1330376	Scale
4	1330269	Index Wheel Assembly, (For 36 Point Indexing, See Service Note B), Incl:	51	1330248	Bushing
5	1330220	Index Collar (For 36 Point Indexing, See Service Note B)	52	432-07-138-0006	Ball Handle (See Service Note A)
4A	1330702	Index Wheel Assembly (For 24 Point Indexing, See Service Note B), Incl:	53	1330240	Eccentric Shaft Assembly (See Service Note A)
5A	1330701	Index Collar (For 24 Point Indexing, See Service Note B)	54	1246101	(DIN 1481) Dia. 5 x 28mm Roll Pin
6	1243402	(DIN 912) M6 x 25mm Soc Hd Cap Scr	55	432-01-138-0001	Handle
7	1330210	Flange	56	1330236	Spindle Locking Plug
8	1330262	Bearing - 6207-2RS	57	1330237	Spindle Locking Plug
9	1330264	(DIN 472) 721 Int Retaining Ring	58	1330379	Handwheel Assembly, Incl: (See Service Note C)
10	1330219	Spindle	59	1246160	(DIN 1481) Dia. 5 x 32mm Roll Pin
11	428-08-079-0001	Key	60	1330239	Ram Adjusting Screw (See Service Note C)
12	422-28-079-0013	Key	61	1330424	Handle Assembly, Incl:
13	1246132	(DIN 915) M8 x 16mm Hex Soc Set Scr	61A	904-01-010-1603	1/4" Flat Washer
14	1246039	(DIN 913) M8 x 12mm Hex Soc Set Scr	61B	902-01-120-1209	1/4-28 Hex Nut
15	1330203	Headstock	64	1330205	Tailstock, Incl:
16	1243394	(DIN 84) M5 x 10mm Cheese Hd Scr	65	1246132	(DIN 915) M8 x 16mm Hex Soc Set Screw
17	1330259	(DIN 84) M5 x 30mm Cheese Hd Mach Scr	66	1330235	Eyebolt
18	1330229	Pin	67	1330244	Lock Nut
19	1330250	Spring	68	1243476	(DIN 934) M12 Hex Nut
*	1330268	Index Assembly, (For 36 Point Indexing, See Service Note B), Const. of:	69	1330241	Carriage Bolt, Incl:
20	1330231	Index Pin (For 36 Point Indexing, See Service Note B)	70	1246160	(DIN 1481) Dia. 5 x 32mm Roll Pin
21	1330261	Pin	71	1330209	Tool Rest Base
22	1330260	Pin	72	432-07-138-0008	Handle
23	422-29-079-0015	Washer	73	1330242	Spacer
24	1330249	Spring	74	1330243	Lock Handle
25	1330228	Index Pin Support	75	1330257	Ball Handle
26	1330226	Knob	76	1330204	Support
*	1330699	Index Assembly (For 24 Point Indexing, See Service Note B)	77	1243398	(DIN 934) M8 Hex Nut
20A	1330700	Index Pin (For 24 Point Indexing, See Service Note B)	78	1246017	(DIN 933) M8 x 25mm Hex Hd Cap Scr
21	1330261	Pin	79	1243554	(DIN 912) M8 x 35mm Soc Hd Cap Scr
22	1330260	Pin	80	1330202	Lathe Bed
23	422-29-079-0015	Washer	81	46-805	6" Tool Rest
24	1330249	Spring	82	46-692	12" Tool Rest
25	1330228	Index Pin Support	83	46-404	Inside Curl Tool Rest
26	1330226	Knob	*	46-403	Tool Rest Base Assy, Const of:
27	1330238	Nameplate	84	1246132	(DIN 915) M8 x 16mm Soc Hd Cap Scr (See Service Note A)
28	1246052	(Din 912) M10 x 35 Soc Hd Cap Scr	85	432-07-138-0008	Handle
29	1243360	(DIN 7980) Dia. 10mm Lockwasher	86	1330208	Tool Rest Base
30	1330232	Sight	87	1330245	Eyebolt
31	1330263	V-Belt	88	1330244	Lock Nut
32	1330206	Pulley	89	1243476	(DIN 934) M12 Hex Nut
33	1330225	Index Gear - 36 Teeth (For 36 Point Indexing. See service Note B)	90	1330246	Eccentric Shaft Assy (See Service Note A)
33A	1330698	Index Gear - 24 Teeth (For 24 Point Indexing, See Service Note B)	91	432-07-138-0006	Ball Handle (See Service Note A)
34	1243336	(DIN 912) M6 x 20mm Soc Hd Cap Scr	92	1330431	Dust Deflector
35	1246130	(DIN 84) M6 x 16mm Cheese Hd Cap scr	**	1330247	Motor Pulley (5/8" Bore)
36	1330222	Cover	**	428-06-101-0001	10 x 13mm Wrench
37	1330211	Retainer	**	432-07-101-0004	5mm Hex Wrench
38	1243336	(DIN 912) M6 x 20mm Soc Hd Cap Scr			AVAILABLE AS AN ACCESSORY
39	1330223	Spindle Nut	*	46-409	Steady Rest, Const of:
40	1330233	Spacer	100	1330331	(DIN 912) M16 x 45mm Soc Hd Screw
41	46-936	3" Face Plate	101	1330376	Washer
42	46-937	6" Face Plate	102	1330299	Nut
43	46-933	Drive Center, Incl:	103	1330301	Steady Rest Body
44	434-01-022-0010	Center	104	1330330	Bearing Shaft
45	901-04-190-0253	1/4-28 x 1/4" Special Screw	105	920-04-013-1276	Bearing
46	46-439	Cup Center, Incl:	106	1246196	(DIN 471) 1SE Ext. Retaining Ring
47	434-01-022-0010	Center	107	1330302	Sliding Arm
			108	1330315	Washer
			109	1330309	Knob
			*	NOT SHOWN ASSEMBLED	
			**	NOT SHOWN	

SERVICE NOTES:

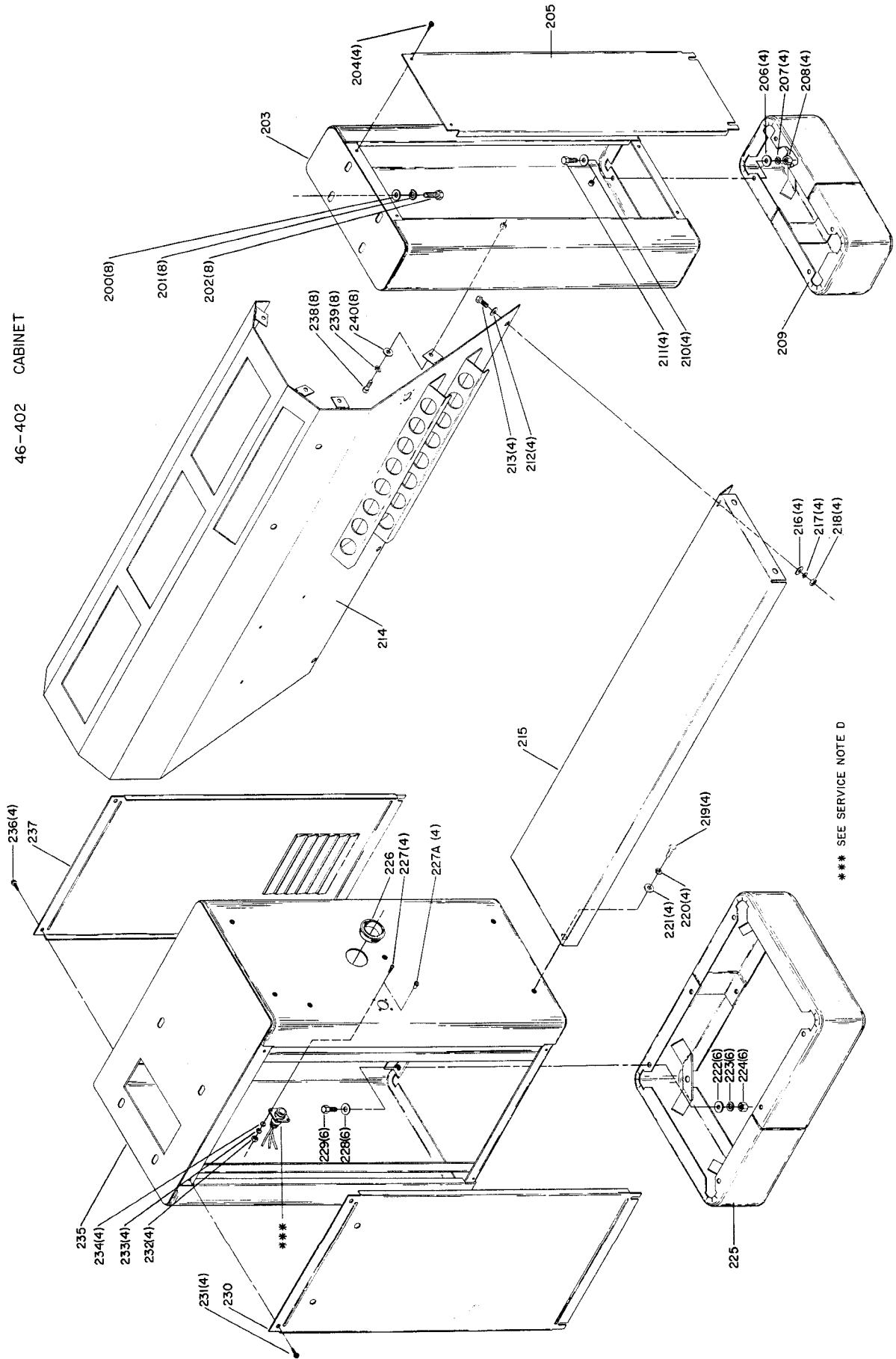
A - When replacement becomes necessary install new part with Loctite.

B - Current units use a 24 Point Indexing System and early units use a 36 Point Indexing System. The number of calibrations on the collar Ref. No. 5 (36) or 5A (24), and the number of teeth on the index gear Ref. No. 33 (36) or 33A (24) will determine which system you have and ensure receiving correct replacement parts.

C - Replacement of Ref. No. 58 handwheel or Ref. No. 60 screw requires operator to drill new part to accept Ref. No. 59 roll pin for proper assembly.

This parts list is provided to aid in obtaining service parts. Copies of the instruction and maintenance literature can be obtained through the Delta Technical Publications Department or through your local service outlet.

46-402 CABINET



*** SEE SERVICE NOTE D

REPLACEMENT PARTS

REF. NO.	PART NO.	DESCRIPTION
200	1243502	(DIN 125) Ø10mm Flat Washer
201	1243360	(DIN 7980) Ø10mm Lockwasher
202	1246100	(DIN 933) M10 x 20mm Hex Hd Cap Screw
*	46-402P	Cabinet Complete, Consisting of:
203	434-07-318-0007	Tailstock Cabinet
204	901-06-423-1170	#10-32 x 5/8" Type T Self Tapping Screw
205	434-07-125-0073	Access Panel
206	904-01-010-1606	3/8" Flat Washer
207	904-02-020-1704	3/8" Lockwasher
208	902-01-010-5900	3/8-16 Hex Nut
209	434-07-305-0011	Tailstock Sub Base Assembly
210	904-01-010-1606	3/8" Flat Washer
211	901-01-060-0640	3/8-16 x 3/4" Hex Hd Cap Screw
212	904-01-010-1605	5/16" Flat Washer
213	901-01-060-0607	5/16-18 x 3/4" Hex Hd Cap Screw
214	434-07-389-0034	Pedestal Support Assembly
215	434-07-089-0032	Pedestal Support Shelf
216	904-01-010-1605	5/16" Flat Washer
217	904-02-010-1703	5/16" Lockwasher
218	902-01-010-1300	5/16-18 Hex Nut
219	901-01-060-0607	5/16-18 x 3/4" Hex Hd Cap Screw
220	904-02-010-1703	5/16" Lockwasher
221	904-01-010-1605	5/16" Flat Washer
222	904-01-010-1606	3/8" Flat Washer
223	904-02-020-1704	3/8" Lockwasher
224	902-01-010-5900	3/8-16 Hex Nut
225	434-07-305-0005	Headstock Sub Base Assembly
226	438-01-011-0020	Insulator
227	901-02-010-7747	#4-40 x 3/8" Rd Hd Screw (Early Models Only)
227A	903-03-023-1472	Rivet (Current Models Only)
228	904-01-010-1606	3/8" Flat Washer
229	901-01-060-0640	3/8-16 x 3/4" Hex Hd Cap Screw
230	434-07-125-0013	Front Access Panel
231	901-06-423-1170	#10-32 x 5/8" Type T Self Tap Screw
232	902-01-120-5432	#4-40 Hex Nut (Early Models Only)
233	904-02-020-1727	#4 Lockwasher (Early Models Only)
234	904-01-011-5747	#4 Flat Washer (Early Models Only)
235	434-07-318-0006	Headstock Cabinet
236	901-06-423-1170	#10-32 x 5/8" Type T Self Tap Screw
237	434-07-125-0072	Rear Access Panel
238	901-01-060-0607	5/16-18 x 3/4" Hex Hd Cap Screw
239	904-02-010-1703	5/16" Lockwasher
240	904-01-010-1605	5/16" Flat Washer
***	434-07-131-0001	Cable Assembly (See Service Note D)

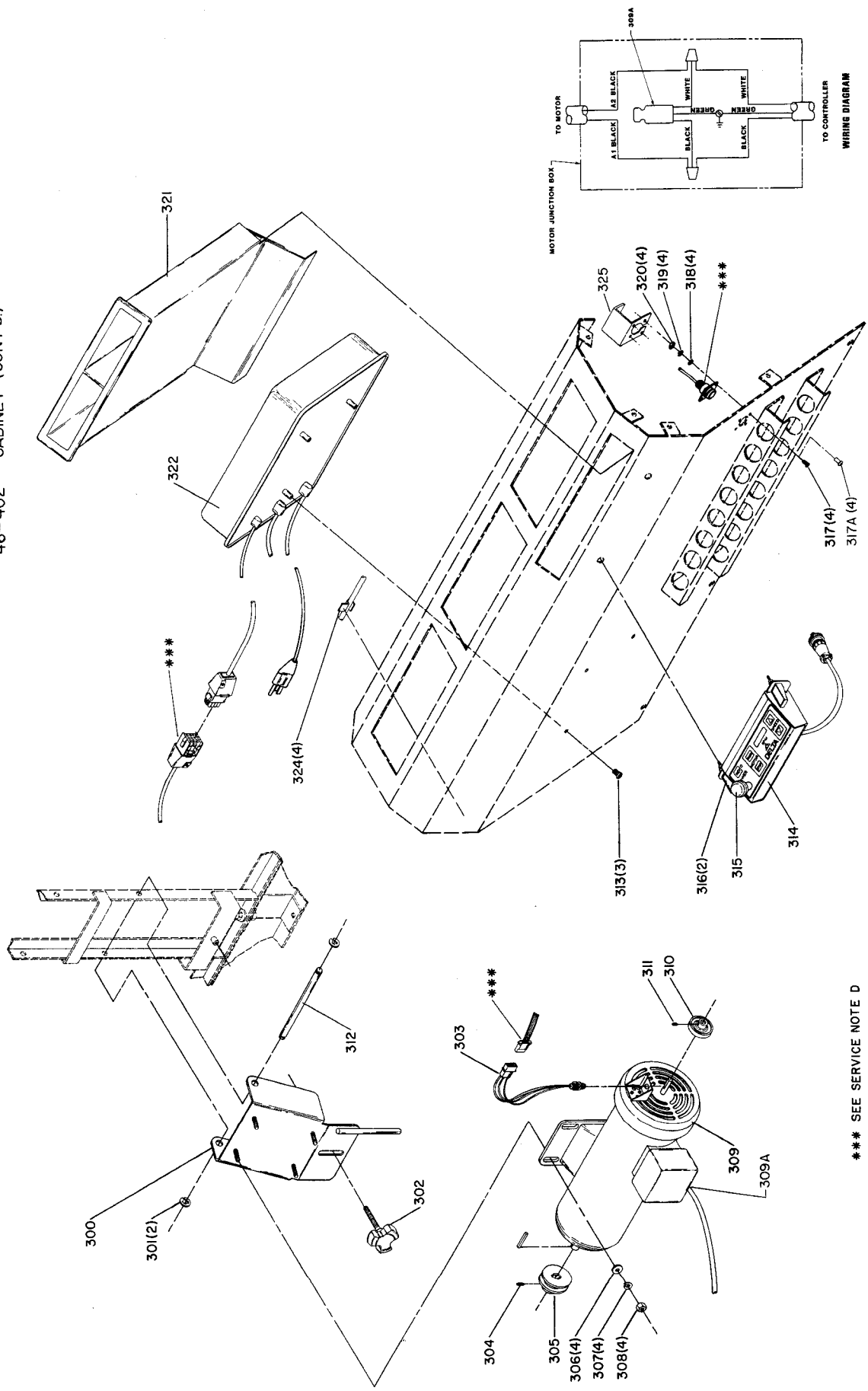
* NOT SHOWN ASSEMBLED

*** SEE SERVICE NOTE D

SERVICE NOTES:

D - Cable Assembly 434-07-302-0001 is a complete wiring harness including connections labeled ***.

46-402 CABINET (CONT'D.)



*** SEE SERVICE NOTE D

REPLACEMENT PARTS

REF. NO.	PART NO.	DESCRIPTION
*	46-402P	Cabinet Complete, Const. of: (Cont'd)
300	434-07-372-0079	Motor Mounting Plate Assembly
301	904-15-012-0052	E-Ring
302	434-07-327-0086	Screw Assembly
303	434-07-302-0002	Speed Sensor Cable Assembly
304	901-04-190-0203	1/4-20 x 3/8" Soc Set Screw
305	434-07-130-0081	Motor Pulley
306	904-01-010-1605	5/16" Flat Washer
307	904-02-010-1703	5/16" Lockwasher
308	902-01-010-1300	5/16-18 Hex Nut
309	438-02-314-1060	Motor Assembly
309A	434-07-131-0003	Motor Filter
310	430-03-100-0001	Speed Sensor Rotor
311	901-04-150-1186	#10-32 x 1/4" Soc Set Screw
312	434-07-104-0051	Motor Mounting Shaft
313	901-02-010-0509	1/4-20 x 1/2" Pan Hd Screw
314	434-07-131-0001	Control Station, Incl:
315	523-85-004-0001	Knob
316	537-85-004-0001	Latch Assembly
317	901-02-010-7747	#4-40 x 3/8" Rd Hd Screw (Early Models Only)
317A	903-03-023-1472	Rivet (Current Models Only)
318	904-01-011-5747	#4 Flat Washer (Early Models Only)
319	904-02-020-1727	#4 Lockwasher (Early Models Only)
320	902-01-120-5432	#4-40 Hex Nut (Early Models Only)
321	434-07-360-0095	Tool Holder Assembly
322	434-07-131-0002	Power Controller Assembly, Incl:
**	584-85-004-2500	Fuse (See Service Note E)
***	434-07-302-0001	Cable Assembly (See Service Note D)
324	434-07-027-0098	Half-U Cable Clip
325	434-07-054-0101	Guard (Current Models Only)
*	NOT SHOWN ASSEMBLED	
**	NOT SHOWN	
***	SEE SERVICE NOTE D	

SERVICE NOTES:

- D - Cable Assembly 434-07-302-0001 is a complete wiring harness including connections labeled ***.
- E - Although the controller contains three (3) fuses, only one (1) fuse, Part No. 584-85-004-2500 is user serviceable. This particular fuse is designed to protect the controller from damage due to physical overload. For example: repeatedly trying to start the lathe with the spindle lock engaged might cause this fuse to "blow" protecting other electronic components.

The other two (2) controller fuses are soldered in place permanently and not user serviceable. If either of those fuses "blow" other electronic components are also damaged and the entire controller must be replaced. Contact your nearest authorized service center. See product service bulletin ST189 for additional information.

This parts list is provided to aid in obtaining service parts. Copies of the instruction and maintenance literature can be obtained through the Delta Technical Publications Department or through your local service outlet.