

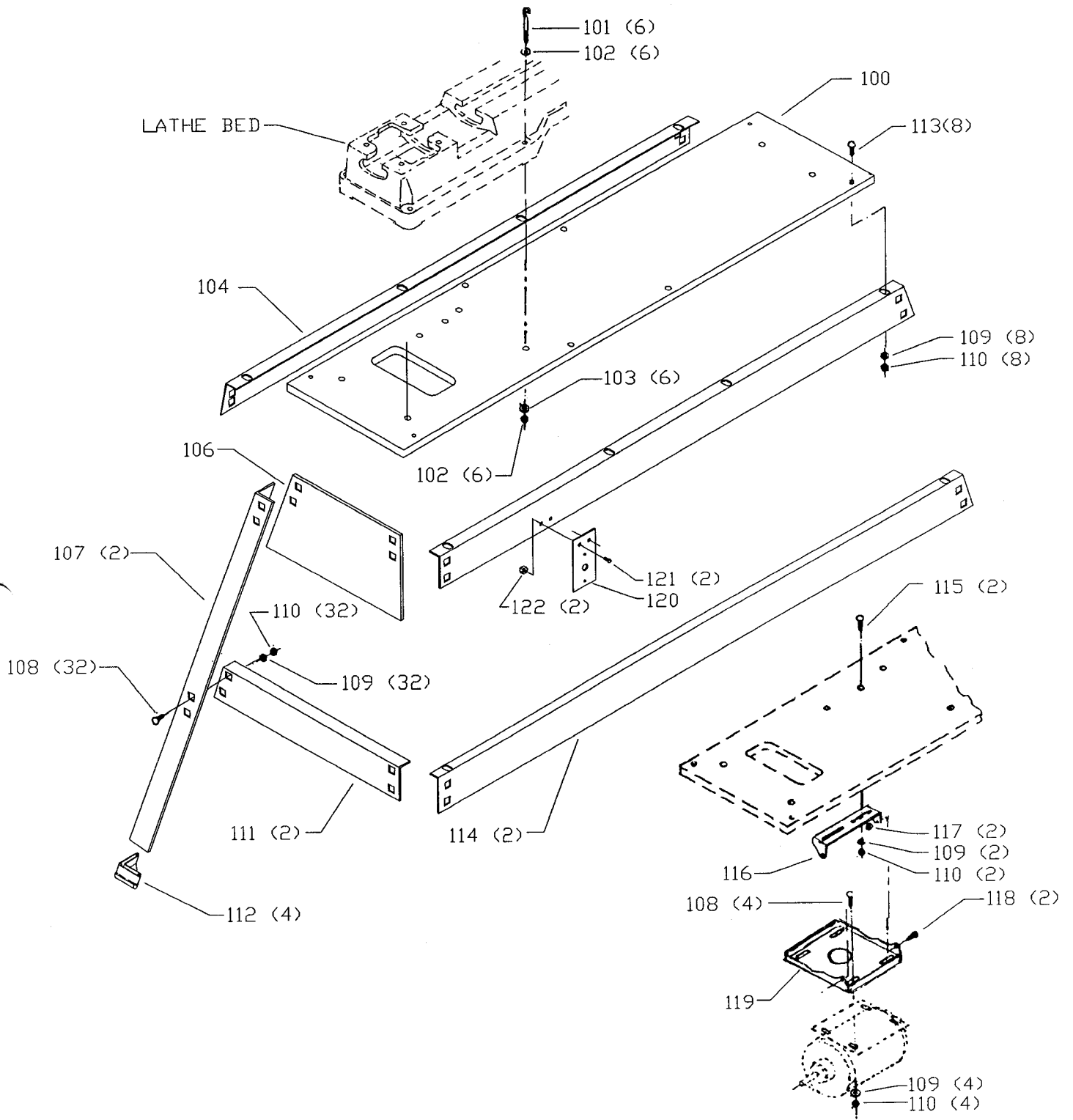
REPLACEMENT PARTS

REF NO	PART NUMBER	DESCRIPTION	REF NO	PART NUMBER	DESCRIPTION
*	46-707	TOOL REST BASE (<i>Current Models Only</i>), INCL:	*	434-04-392-5001	TAIL STOCK ASSY, INCL:
1	905-01-010-2706	3/16" X 1" SPRING PIN	42	434-02-077-5001	RAM
2	434-08-005-0001	TOOL REST BASE, INCL:	43	434-03-112-5005	ADJUSTING SCREW
3	434-02-327-5004	CLAMP ASSY	44	905-01-010-2704	1/8" X 3/4" SPRING PIN
7	434-03-112-0002	EYE BOLT	45	904-01-031-2903	FLAT WASHER
8	434-08-072-0001	CLAMP PLATE	46	434-03-342-5001	ECCENTRIC SHAFT ASSY
9	904-01-010-1615	FLAT WASHER	47	406-03-112-0006	SPECIAL SCREW (<i>Current Models Only</i>)
10	902-01-213-1635	3/8-16 LOCK NUT	47A	406-03-112-0003	SPECIAL SCREW (<i>Early Models Only</i>)
11	434-08-108-0001	CAM ROD	48	406-03-122-0002	SPRING
13	46-805	6" TOOL REST	49	406-03-033-0002	RATCHET HANDLE (<i>Current Models Only</i>)
14	46-711	12" TOOL REST	49A	406-03-033-0001	HANDLE (<i>Early Models Only</i>)
15	49-034	BELT	50	902-01-201-2579	7/16-14 HEX NUT (<i>Current Models Only</i>)
16	926-04-991-2314	SPINDLE PULLEY, INCL:	50A	902-04-030-1408	7/16-14 SERRATED NUT (<i>Early Models Only</i>)
17	901-04-190-0201	5/16-18 X 5/16" HEX SOC SET SCREW	51	406-03-111-0002	STUD (<i>Current Models Only</i>)
18	902-01-201-5456	SPINDLE NUT - LH	51A	901-04-190-0288	7/16-14 X 2" HEX SOC SET SCREW (<i>Early Models Only</i>)
19	434-02-079-5002	BEARING RETAINER	52	907-00-000-2486	OIL HOLE COVER
20	901-03-010-3318	#10-32 X 3/8" HEX SOC HD SCREW	53	434-03-312-0001	TAILSTOCK ASSY, INCL:
21	920-04-020-5360	BALL BEARING	54	920-75-103-1387	BUSHING
22	928-06-010-7352	WAVE WASHER	55	930-01-043-1338	HANDWHEEL ASSY, INCL:
23	434-04-058-5001	HEADSTOCK	56	905-07-011-3111	PIN
24	434-04-054-5001	GUARD	57	1085958	HANDLE
25	905-01-010-6715	3/16" X 5/8" SPRING PIN	58	901-04-140-0252	5/16-18 X 5/16" HEX SOC SET SCREW
26	921-01-010-0027	STEEL BALL	59	905-01-010-2729	3/16" X 1/2" SPRING PIN
27	928-01-021-3378	COIL SPRING	60	434-01-111-0003	U STUD
28	434-02-371-5001	INDEX PIN	61	904-03-020-1764	1/4" INT TOOTH WASHER
30	434-02-085-5002	SPINDLE	62	901-09-060-6131	1/4-28 X 1/2" HEX HD SCREW
31	920-07-080-5334	BALL BEARING	63	434-03-027-5001	CLAMP PLATE
32	434-02-079-5002	BEARING RETAINER	64	902-01-210-1212	5/16-24 LOCK NUT
33	901-03-010-3318	#10-32 X 3/8" HEX SOC HD SCREW	65	406-03-137-0004	NAMEPLATE
34	902-01-201-5462	SPINDLE NUT - RH	66	434-04-306-0001	LATHE BED
35	46-936	3" RH FACE PLATE	67	904-02-020-1704	3/8" LOCK WASHER
36	46-933	DRIVE CENTER, INCL:	68	901-01-060-0658	3/8-24 X 1" HEX HD SCREW
37	901-04-190-0253	1/4-20 X 1/4" HEX SOC SET SCREW	69	434-01-101-0002	WRENCH
38	434-01-022-0010	CENTER	70	1203099	DANGER DECAL
39	46-439	CUP CENTER, INCL:	71	901-06-450-2250	#04 X 3/16" ROUND HD SCREW
40	901-04-190-9412	1/4-20 X 3/16" HEX SOC SET SCREW	72	434-00-752-0001	WARNING LABEL
41	434-01-022-0010	CENTER			

ITEMS LISTED BELOW FOR USE WITH EARLY MODELS ONLY

*	46-171	TOOL REST BASE, CONST OF:
74	434-02-005-5002	SUPPORT BASE
75	904-10-101-3151	STEEL BUSHING
76	434-02-042-5001	SHAFT
77	904-01-031-2903	FLAT WASHER
78	928-01-020-7393	COIL SPRING
79	901-11-320-0091	5/8-18 EYE SCREW
80	434-02-103-5001	FLANGE
81	902-01-200-9764	5/8-18 JAM NUT
82	901-04-150-0232	1/4-20 X 3/8" HEX SOC SET SCREW
83	434-02-327-5004	CLAMP ASSY
84	905-01-010-2708	3/16" X 1 1/4" SPRING PIN
85	434-02-067-5001	CLAMP LEVER

* NOT SHOWN ASSEMBLED



REPLACEMENT PARTS

REF NO	PART NUMBER	DESCRIPTION
100	50-203	TOP SHELF (INCLUDED WITH LATHE)
*	50-204	STAND, CONST OF:
101	901-01-060-0645	3/8-16 X 3" HEX HD SCREW
102	904-01-010-1615	FLAT WASHER
103	902-01-010-5900	3/8-16 JAM NUT
104	427-99-014-0072	BRACKET - 54 7/16" LG (<i>Current Models Only</i>)
104A	427-99-014-4001	BRACKET - 57 1/2" LG (<i>Early Models Only</i>)
106	427-99-123-0003	PANEL
107	427-99-066-0034	LEG
108	901-11-020-0834	5/16-18 X 3/4" CARRIAGE HD SCREW
109	904-01-010-1620	FLAT WASHER
110	902-01-010-1300	5/16-18 HEX NUT
111	427-99-014-0064	BRACKET - 18 3/16" LG (<i>Current Models Only</i>)
111A	427-99-014-0031	BRACKET - 17 1/4" LG (<i>Early Models Only</i>)
112	427-99-048-0001	FOOT
113	901-11-020-0830	5/16-18 X 1 1/4" CARRIAGE HD SCREW
114	427-99-014-0071	BRACKET - 64 7/16" LG (<i>Current Models Only</i>)
114A	427-99-014-4003	BRACKET 63 1/2" LG (<i>Early Models Only</i>)
115	901-11-020-0830	5/16-18 X 1 1/4" CARRIAGE HD SCREW
116	1087211	HINGE BRACKET
117	902-01-210-1072	5/16-18 LOCK NUT
118	901-01-060-0606	5/16-18 X 5/8" HEX HD SCREW
119	402-04-072-5001	MOTOR PLATE

ITEMS LISTED BELOW INCLUDED WITH MOTOR PACK

120	438-01-021-0230	SWITCH PLATE
121	901-02-120-7504	1/4-20 X 5/8" TRUSS HD SCREW
122	902-01-293-1240	1/4-20 KEPS NUT

* NOT SHOWN ASSEMBLED

STANDARD SAFETY EQUIPMENT

In order to promote tool safety, Delta International Machinery Corp. strictly enforces the policy of repairing or replacing any damaged or missing standard safety equipment on machines presented to Delta Authorized Service Center for service/repairs. Any product which is presented to a Delta Authorized Service Center for repairs which contains missing or damaged standard safety equipment will have that equipment repaired or replaced and the customer will be charged for any such service/repairs. Customers can avoid such charges only if the missing safety component is supplied to the service center at the time of repair.

This parts list is provided to aid in obtaining service parts. Copies of the instruction and maintenance literature can be obtained through the Delta Technical Publications Department or through your local service outlet.