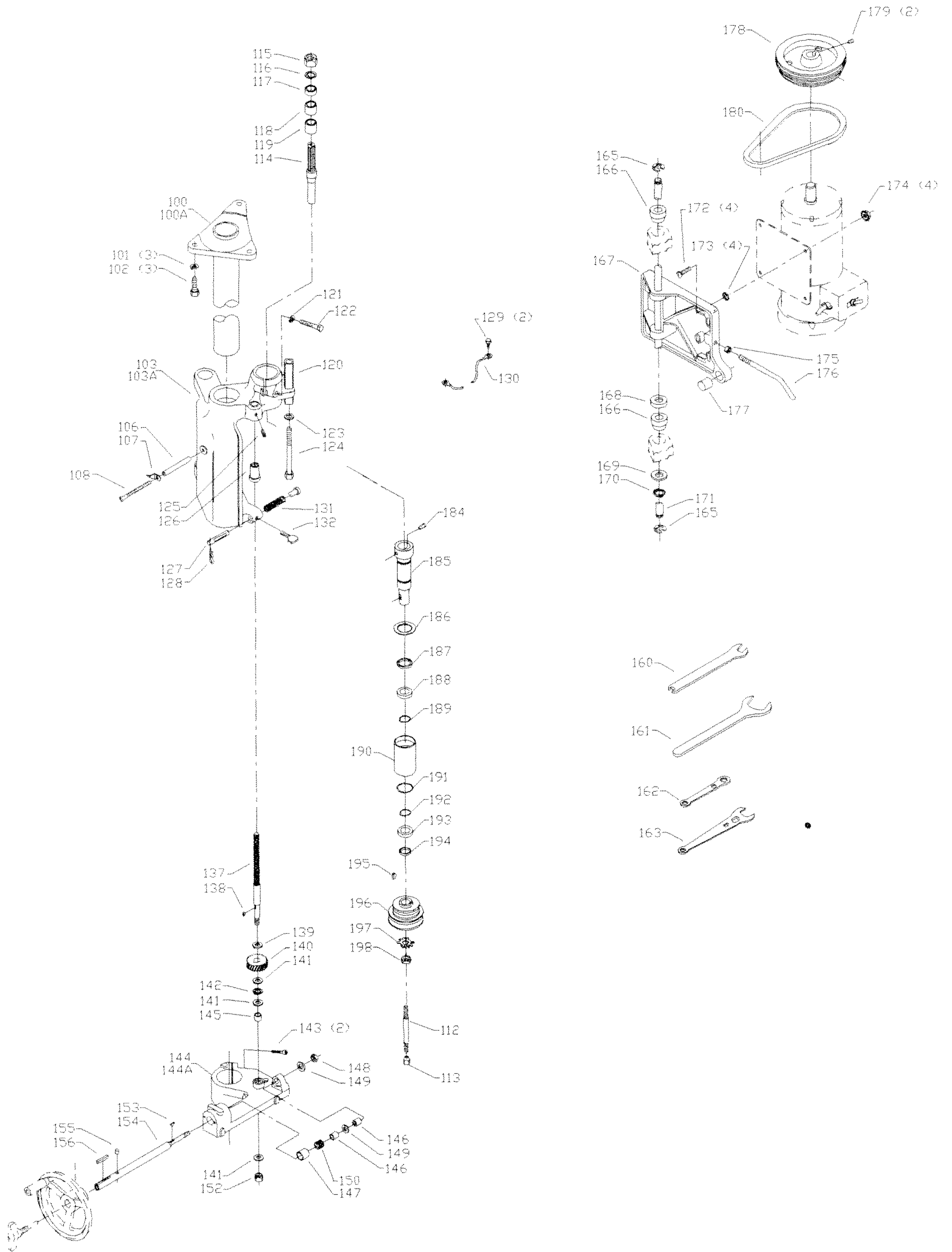


REPLACEMENT PARTS

<u>REF. NO.</u>	<u>PART NUMBER</u>	<u>DESCRIPTION</u>	<u>REF. NO.</u>	<u>PART NUMBER</u>	<u>DESCRIPTION</u>
*	43-801	DELUXE SHAPER FENCE, CONST OF:	52	1348515	FENCE R.H.
1	1348490	CLIP	53	1342787	GUIDE
2	1310023	(DIN 316) M8 X 17MM THUMB SCR	54	1348516	FENCE L.H.
3	1349366	BLOCK	*	43-555	ADAPTER, CONST OF: (FOR 1/2" SPINDLES ONLY)
4	1348493	VERTICAL BAR			
5	1348494	GUIDE	56	432-02-104-0008	SPACER
6	1348499	CAM WASHER	57	432-02-017-0004	BUSHING
7	1246056	(DIN 912) M6 X 12MM HEX SOC HD SCR	58	432-02-104-0006	SPACER (FOR 3/4" SPINDLES ONLY)
8	1348492	HORIZONTAL BAR	59	43-440	4-1/2" SPINDLE GUARD (FOR 1/2" & 3/4" SPINDLES ONLY)
9	1342758	VERTICAL BAR			
10	1348495	HOLD DOWN	60	432-02-063-0004	TABLE INSERT - SMALL
11	1342768	HORIZONTAL BAR	61	432-02-063-0002	TABLE INSERT - INTERMEDIATE
12	1348497	SHIELD	62	901-02-050-0725	1/4-20 X 1" FILL HD SCR
13	1348484	WARNING LABEL	63	432-02-112-0002	INSERT SCR
14	1341104	(DIN 84) M6 X 20MM CHEESE HD SCR	64	432-02-063-0003	TABLE INSERT ASSY - OUTER
15	1348499	CAM WASHER	65	36-933	EXTENSION WING, INCL:
16	1340654	(DIN 9021) M6.4 FLAT WASHER	66	901-01-060-0664	7/16-20 X 1" HEX HD SCR
17	1348491	VERTICAL BAR	67	904-10-031-2097	WASHER
18	1343504	(DIN 985) M5 LOCK NUT	68	905-03-013-1493	2-1/2" TAPER PIN
19	1343538	(DIN 7980) M5.1 LOCK WASHER	69	432-02-391-0005	TABLE
20	1348498	LATCH	70	904-10-031-2097	WASHER
21	1246050	(DIN 912) M5 X 25MM HEX SOC HD SCR	71	901-03-010-1487	7/16-20 X 3/4" HEX SOC HD SCR
22	1346203	(DIN 912) M5 X 10MM HEX SOC HD SCR	72	432-02-318-0008	CABINET ASSY, INCL:
23	1348499	CAM WASHER	72A	432-02-137-0004	NAMEPLATE (PLATINUM EDITION)
24	1343504	(DIN 985) M5 LOCK NUT	72B	1087794	RIVET
25	1343538	(DIN 7980) M5.1 LOCK WASHER	73	438-01-011-0065	PLUG
26	1348500	BRACKET	74	438-01-011-0020	INSULATOR
27	1246050	(DIN 912) M5 X 25MM HEX SOC HD SCR	75	901-05-213-1498	#10 X 1/2" HEX WASHER HD SCR
28	1243398	(DIN 934) M8 HEX NUT	76	432-02-331-0009	DOOR ASSY, INCL:
29	1243659	(DIN 913) M8 X 40MM HEX SOC SET SCR	77	432-02-754-0004	SPEED CHART
30	1243336	(DIN 912) M6 X 20MM HEX SOC HD SCR	78	901-11-020-0834	5/16-18 X 3/4" CARRIAGE HD SCR
31	1243520	(DIN 7980) M6.1 LOCK WASHER	79	902-01-503-1514	5/16-18 FLANGE NUT
32	1348502	KNOB W/STUD	80	422-04-305-0001	SUB BASE
33	1345971	M8 FLAT WASHER	81	432-02-072-0002	SWITCH RETAINER PLATE
34	1342772	PLATE	82	902-01-133-1529	1/4-20 FLANGE NUT
35	1342777	FENCE BODY	83	432-02-014-0007	STARTER BRACKET
36	1340654	(DIN 9021) M6.4 FLAT WASHER	84	902-01-293-1513	#10-32 KEPS NUT
37	1343642	(DIN 985) M6 LOCK NUT	85	901-02-453-1123	#10-32 X 1/2" PAN HD SCR
38	1342770	LOCK LEVER	86	438-01-016-0199	STARTER, GPE, 1PH, 230V
39	1246158	(DIN 916) M5 X 16MM HEX SOC SET SCR	87	438-01-004-0007	CORD CLAMP
40	1348511	ADJUSTMENT KNOB	88	438-01-011-0054	INSULATOR SLEEVE
41	1246051	(DIN 912) M5 X 12MM HEX SOC HD SCR	89	438-01-302-2013	POWER CORD, 230V
42	1342774	PLATE	90	901-02-403-1131	1/4-20 X 7/8" TRUSS HD SCR
43	1342775	ADJUSTMENT SCR	91	438-01-011-0020	INSULATOR
44	1342776	LOCK HANDLE	92	422-04-412-0009	LOCK KNOB
45	1243502	(DIN 125) M10 FLAT WASHER	93	422-04-400-0005	HANDWHEEL, INCL:
46	1342779	RAM	94	901-04-190-0201	5/16-18 X 5/16" HEX SOC SET SCR
47	1246053	(DIN 912) M8 X 25MM HEX SOC HD SCR	95	901-03-010-3318	#10-32 X 3/8" HEX SOC HD SCR
48	1348512	LOCK LEVER	96	432-02-031-5002	COVER
49	1341947	M8 FLAT WASHER	97	901-03-010-3345	1/4-20 X 1" HEX SOC HD SCR
50	1342781	SET OF BLOCKS R.H. AND L.H.	98	432-02-014-0001	BRACKET W/SCALE
51	1348517	SET OF CAPS R.H. AND L.H.	99A	902-01-120-1034	1/4-20 HEX NUT
			99B	904-03-030-1757	1/4" EXT TOOTH WASHER

* NOT SHOWN ASSEMBLED



REPLACEMENT PARTS

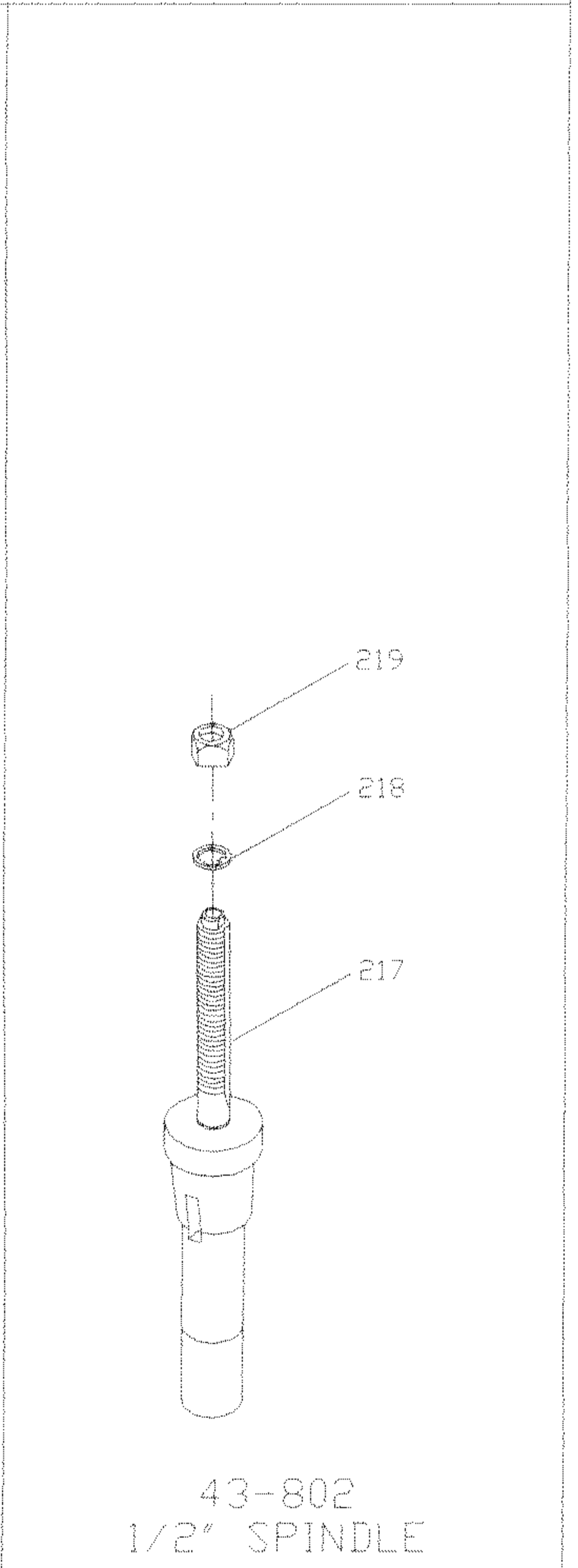
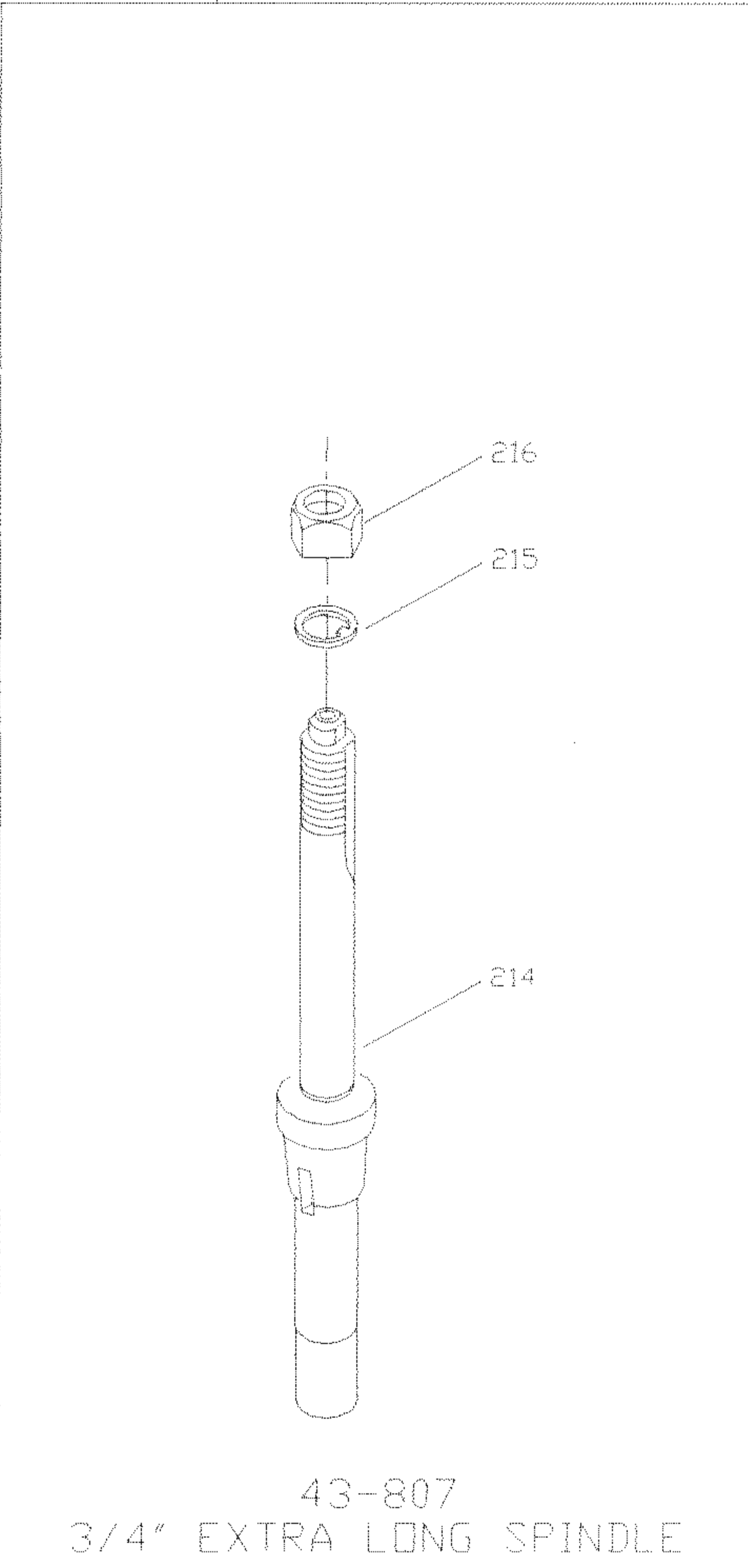
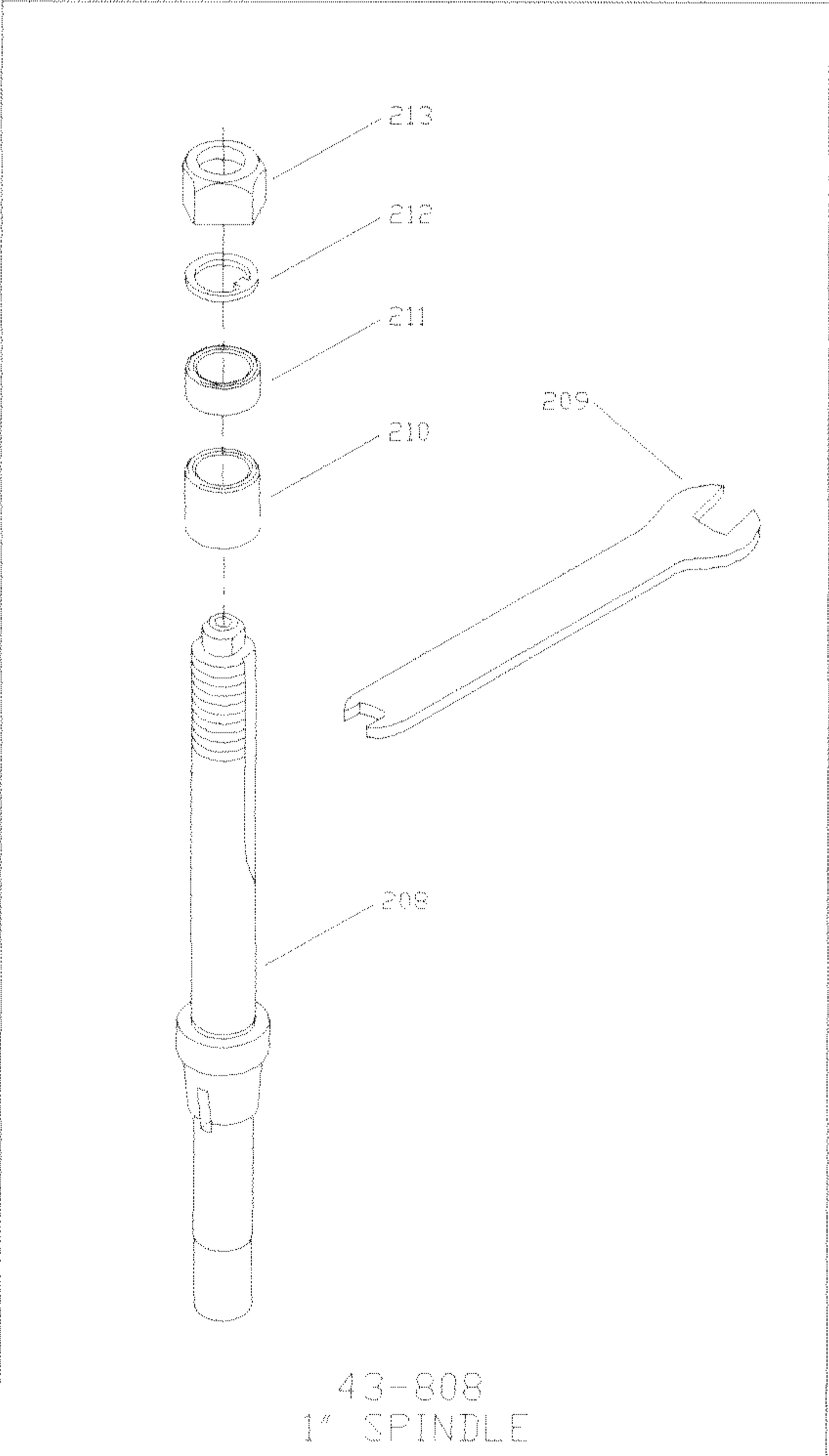
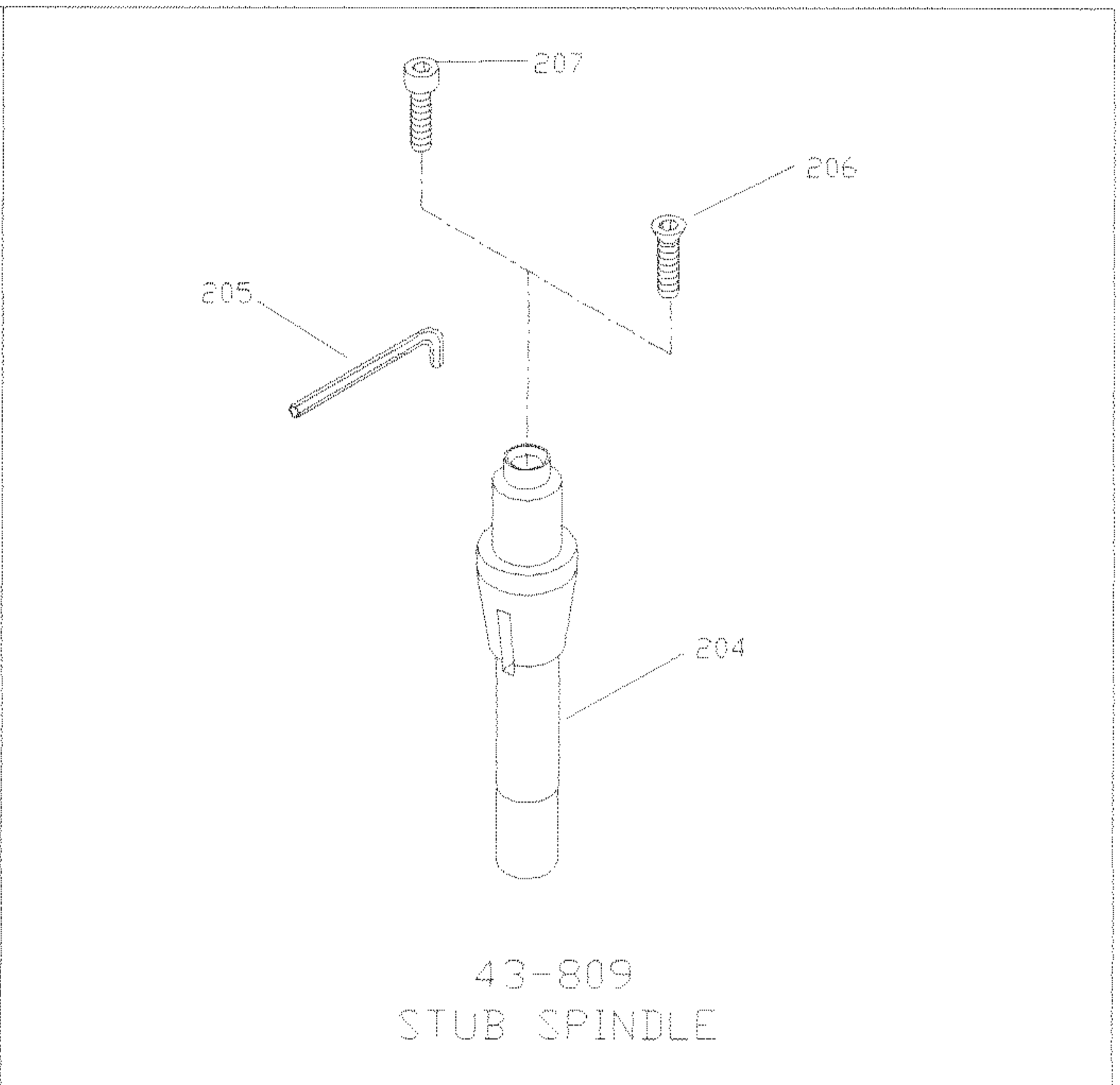
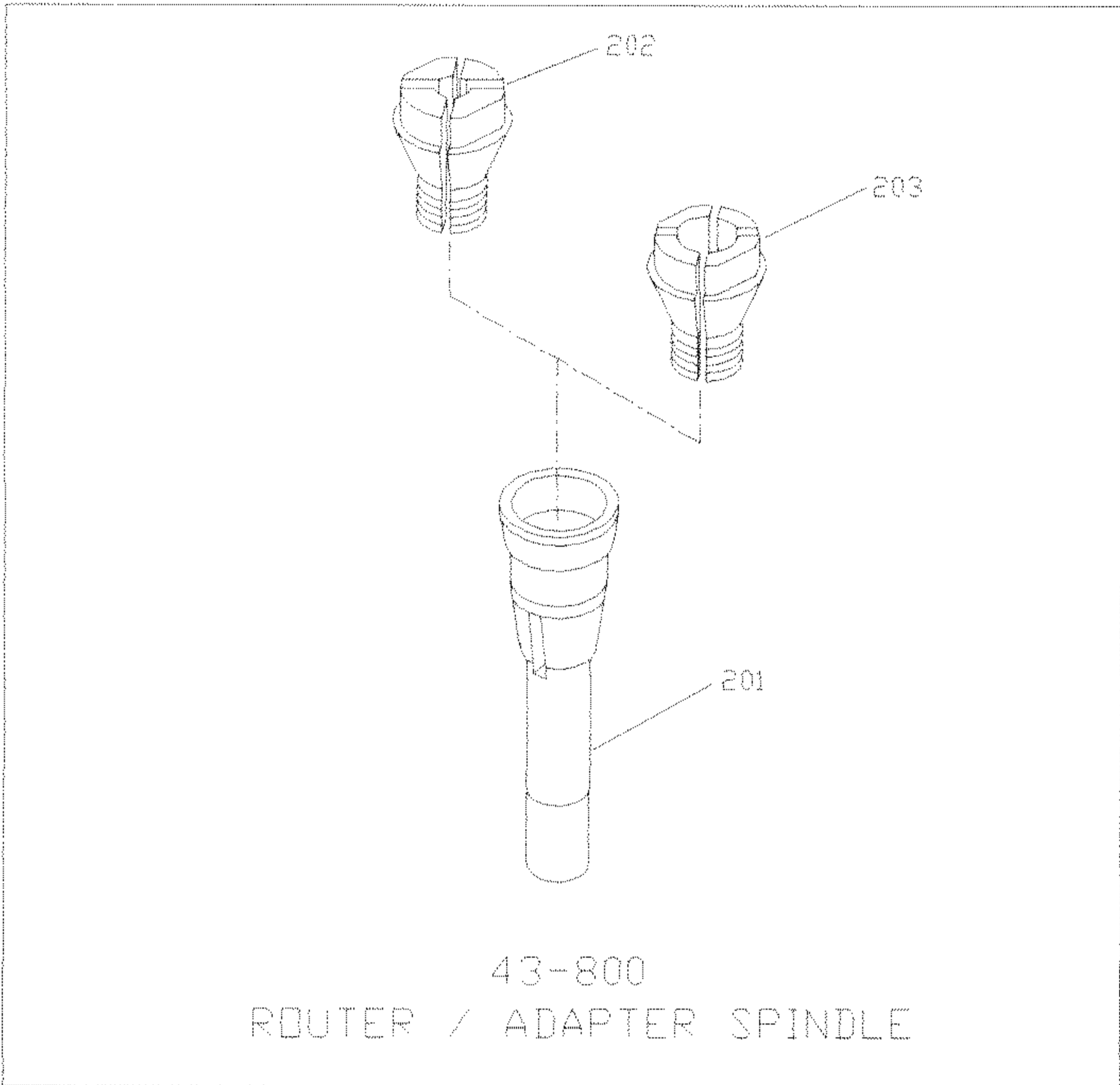
<u>REF. NO.</u>	<u>PART NUMBER</u>	<u>DESCRIPTION</u>	<u>REF. NO.</u>	<u>PART NUMBER</u>	<u>DESCRIPTION</u>
100	432-02-403-0001	FLANGE ASSY (EMO, 2.875" DIA., SEE NOTE A)	145	920-75-013-1524	BEARING
100A	432-02-403-0002	FLANGE ASSY (CMO, 2.954" DIA., SEE NOTE A)	146	920-75-013-1523	BEARING
101	904-02-020-1705	1/2" LOCK WASHER	147	920-75-011-2784	SLEEVE BEARING
102	901-01-060-0672	1/2-20 X 1 1/4" HEX HD SCR	148	902-01-213-1635	3/8-16 LOCK NUT
103	432-02-012-0005	SPINDLE HOUSING ASSY (EMO, 2.875" DIA., SEE NOTE A)	149	920-76-033-1391	SPECIAL WASHER
103A	432-02-012-0007	SPINDLE HOUSING ASSY (CMO, 2.954" DIA., SEE NOTE A)	150	432-02-051-0001	SPIRAL GEAR
106	432-02-104-5001	SPACER	152	902-01-281-7295	1/4-20 HEX NUT
107	422-04-075-5001	POINTER	153	927-01-010-2631	KEY
108	901-02-013-1813	5/16-18 X 3 1/2" ROUND HD SCR	154	432-02-106-0002	HORIZONTAL RAISING SCR
112	432-02-112-0003	TIE ROD	155	422-04-074-0001	PLUG
113	902-01-201-2584	5/16-18 HEX NUT	156	927-03-010-2650	1-3/8" KEY
114	43-806	3/4" SPINDLE ASSY, INCL:	160	955-01-040-1485	WRENCH
115	902-01-131-3082	.76-14 HEX NUT	161	404-01-101-5001	WRENCH
116	904-05-010-6662	3/4" LOCK WASHER	162	955-01-020-0023	.567" X .88" BOX END WRENCH
117	904-10-031-4506	1-1/4 X 1/2" COLLAR	163	955-01-050-1467	WRENCH
118	904-10-031-4507	1-1/4 X 3/4" COLLAR	165	904-15-060-7443	EXT RET RING
119	904-10-031-4508	1-1/4 X 1" COLLAR	166	932-01-010-2860	BUSHING
120	432-02-110-5001	HEX GUIDE POST	167	432-02-005-0001	MOTOR PLATE
121	904-02-020-1704	3/8" LOCK WASHER	168	432-02-079-5001	RETAINER
122	901-01-060-0646	3/8-16 X 2" HEX HD SCR (SEE NOTE B)	169	904-01-010-1611	13/16" FLAT WASHER
123	904-01-031-2905	FLAT WASHER	170	928-07-010-7378	FINGER SPRING WASHER
124	901-01-060-0685	1/2-20 X 5" HEX HD SCR	171	432-02-106-0001	SHAFT
125	901-04-190-0201	5/16-18 X 5/16" HEX SOC SET SCR	172	901-11-020-0830	5/16-18 X 1 1/4" CARRIAGE HD SCR
126	432-02-105-5002	RAISING NUT	173	904-03-030-1656	5/16" EXT TOOTH WASHER
127	432-02-071-0001	PIN	174	902-01-503-1514	5/16-18 FLANGE NUT
128	905-05-040-2106	1/8" X 1 1/4" COTTER PIN	175	902-01-201-2579	7/16-14 HEX NUT
129	901-03-010-3318	#10-32 X 3/8" HEX SOC HD SCR	176	432-02-067-0002	LEVER
130	438-01-320-0258	JUMPER WIRE	177	432-02-016-5001	BUMPER
131	432-02-122-0001	SPRING	178	432-02-430-0003	MOTOR PULLEY ASSY, INCL:
132	901-04-260-1528	5/16-18 X 1" THUMB SCR	179	901-04-150-0206	5/16-18 X 5/16" HEX SOC SET SCR
*	432-02-314-0008	ELEVATING BRACKET / GEAR ASSY, (EMO, 2.875" DIA., SEE NOTE A), CONST OF:	180	432-02-133-0001	POLY V-BELT
*	432-02-314-0010	ELEVATING BRACKET / GEAR ASSY, (CMO, 2.954" DIA., SEE NOTE A), CONST OF:	*	432-02-385-0011	SPINDLE ASSY, CONST OF:
137	432-02-112-0001	VERTICAL RAISING SCR	184	432-02-071-0003	DRIVE PIN
138	927-01-010-2633	WOODRUFF KEY	185	432-02-105-0003	FLANGE
139	904-01-031-2905	FLAT WASHER	186	432-02-103-0002	FLANGE
140	432-02-051-0002	SPIRAL GEAR	187	432-02-079-0002	NUT
141	920-76-033-1392	THRUST BEARING	188	920-04-033-1821	BEARING
142	920-45-013-1412	THRUST BEARING	189	904-15-013-1819	RETAINING RING
143	901-03-010-0760	1/4-20 X 1 1/4" HEX SOC HD SCR	190	432-02-077-0001	QUILL (SEE NOTE B)
144	432-02-314-0007	BRACKET ASSY, (EMO, 2.875" DIA., SEE NOTE A), INCL:	191	904-04-013-1820	WAVE WASHER
144A	432-02-314-0009	BRACKET ASSY, (CMO, 2.954" DIA., SEE NOTE A), INCL:	192	904-15-013-1819	RETAINING RING
			193	920-04-033-1821	BEARING
			194	432-02-104-0012	SPACER
			195	927-01-100-2606	KEY
			196	432-02-130-0006	SPINDLE PULLEY
			197	432-02-079-0001	RETAINER
			198	902-07-030-7171	.802-28 BEARING NUT

* NOT SHOWN ASSEMBLED
EMO = EARLY MODELS ONLY
CMO = CURRENT MODELS ONLY

SERVICE NOTES:

A- Effective with Serial Number **99179578**, the diameter of the tubing for the Flange Assy (Ref No's 100 & 100A) has been increased from 2.875" to 2.954". This dimension change affects Spindle Housing Assy bore diameter (Ref No's 103 & 103A), and Bracket Assy bore diameter (Ref No's 144 & 144A).

B- When replacing the QUILL (Ref No 190), the 3/8-16 X 2" HEX HD SCR (Ref No 122) should be tightened 7 to 10 foot pounds.



REPLACEMENT PARTS

AVAILABLE AS AN ACCESSORY

<u>REF. NO.</u>	<u>PART NUMBER</u>	<u>DESCRIPTION</u>
201	43-800	ROUTER ADAPTER SPINDLE, <i>INCL:</i>
202	58939	1/4" COLLET (<i>ORDER FROM PORTER CABLE</i>)
203	18051	1/2" COLLET (<i>ORDER FROM PORTER CABLE</i>)
204	43-809	STUB SPINDLE, <i>INCL:</i>
205	955-03-010-0010	7/32" HEX WRENCH
206	901-03-100-6144	5/16-18 X 1 1/8" FLAT HD SCR
207	901-03-100-6139	5/16-18 X .86 HEX SOC HD SCR
208	43-808	1" SPINDLE, <i>INCL:</i>
209	955-01-040-1485	WRENCH
*	43-832	SPACER COLLAR SET (<i>FOR 1" SPINDLES ONLY</i>), <i>CONST OF:</i>
210	432-02-105-0001	1" COLLAR
211	432-02-105-0002	1/2" COLLAR
212	904-05-010-6674	SPECIAL KEYED WASHER
213	902-01-201-8553	1.00-14 HEX NUT
214	43-807	3/4" EXTRA LONG SPINDLE, <i>INCL:</i>
215	904-05-010-6662	3/4" LOCK WASHER
216	902-01-131-3082	.76-14 HEX NUT
217	43-802	1/2" SPINDLE, <i>INCL:</i>
218	904-05-010-1646	3/4" WASHER
219	902-01-201-2575	.50-16 HEX NUT

* NOT SHOWN ASSEMBLED

STANDARD SAFETY EQUIPMENT

In order to promote tool safety, Delta International Machinery Corp. strictly enforces the policy of repairing or replacing any damaged or missing standard safety equipment on machines presented to Delta Authorized Service Centers for service/repair. Any product which is presented to a Delta Authorized Service Center for repairs which contains missing or damaged standard safety equipment will have that equipment repaired or replaced and the customer will be charged for any such service/repairs. Customers can avoid such charges only if the missing safety component is supplied to the service center the time of repair.

This parts list is provided to aid in obtaining service parts. Copies of the instruction and maintenance literature can be obtained through the Delta Technical Publications Department or through your local service outlet.