

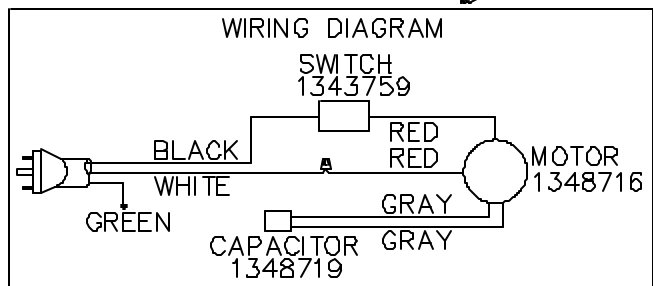
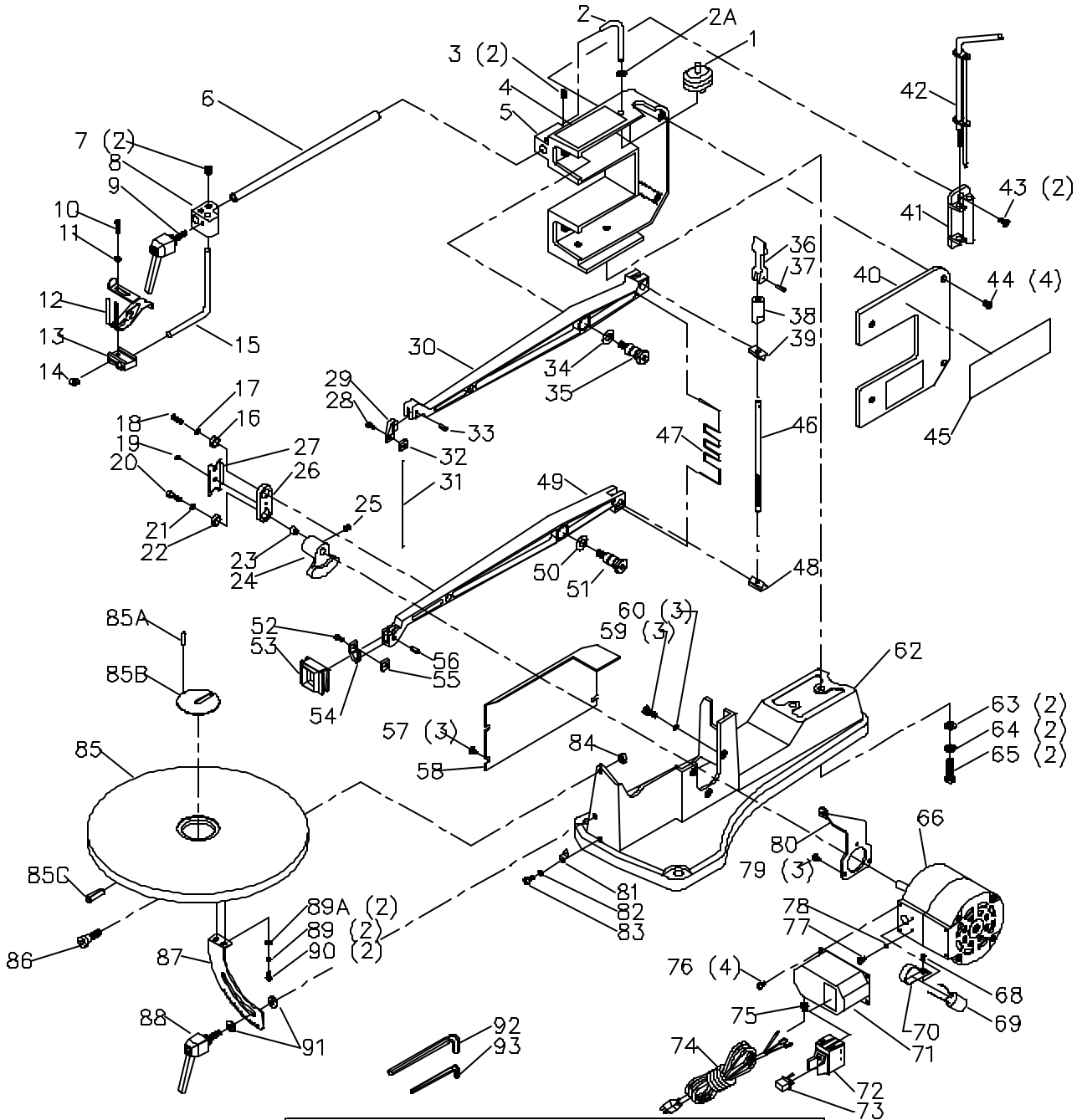


40-530 16" SINGLE SPEED SCROLL SAW

SS-1C

PARTS LIST NO. 900622

Revised: 02/26/2001



REPLACEMENT PARTS

| Ref. | No. | Part No. | Description | Ref. | No. | Part No. | Description |
|------|-----|----------|-----------------------------|------|-----|-----------------|----------------------------|
| | 1 | 1348683 | AIR DIAPHRAM | | 52 | 1246051 | M5 X 12MM HEX SOC HD SCREW |
| | 2 | 1348684 | TUBING | | 53 | 1344931 | BOOT |
| | 2A | 1348721 | PUSH NUT | | 54 | 1343658 | BLADE HOLDER |
| | 3 | 1341011 | M8 X 10MM HEX SOC SET SCREW | | 55 | 1343634 | M5 SQUARE NUT |
| | 4 | n 901226 | WARNING LABEL, T2 | | 56 | 1246109 | M5 X 16MM SPRING PIN |
| | | 1344370 | WARNING LABEL, T1 | | 57 | 1310143 | M5 X 8MM PAN HD SCREW |
| | 5 | n 901220 | C-FRAME, T2 | | 58 | 1348705 | SIDE COVER |
| | | 1348685 | C-FRAME, T1 | | 59 | 1341863 | M5 X 15MM HEX HD SCREW |
| | 6 | 1348686 | ROD | | 60 | 1343533 | M5 LOCK WASHER |
| | 7 | 1341011 | M8 X 10MM HEX SOC SET SCREW | | 62 | n 901219 | BASE, T2 |
| | 8 | n 900206 | BRACKET, T2 | | | 1348714 | BASE, T1 |
| | | 1343601 | BRACKET, T1 | | 63 | 1243526 | M8.4 FLAT WASHER |
| | 9 | n 900205 | CLAMP ASSY, T2 | | 64 | 1246157 | M8.1 LOCK WASHER |
| | | 1343602 | CLAMP ASSY, T1 | | 65 | 1246016 | M8 X 25MM HEX HD SCREW |
| | 10 | 1246098 | M5 X 16MM HEX SOC HD SCREW | | 66 | 1348716 | MOTOR ASSY 1 PHASE |
| | 11 | 1348689 | FLAT WASHER | | 68 | 1310159 | M4 X 6MM PAN HD SCREW |
| | 12 | 1348690 | PLATE | | 69 | 1348719 | CAPACITOR |
| | 13 | n 901218 | BLOCK, T2 | | 70 | 1348720 | STRAP |
| | | 1348691 | BLOCK, T1 | | 71 | 1348718 | BOX |
| | 14 | 1246102 | M5.3 FLAT WASHER | | 72 | 1343759 | SWITCH |
| | 15 | 1348692 | ROD | | 73 | 400-06-068-0002 | SWITCH KEY |
| | 16 | 1341439 | BALL BEARING | | 74 | 1348717 | POWER CORD |
| | 17 | 1343533 | M5 LOCK WASHER | | 75 | 1320131 | STRAIN RELIEF |
| | 18 | 1344933 | M5 X 20MM HEX SOC HD SCREW | | 76 | 1310159 | M4 X 6MM PAN HD SCREW |
| | 19 | 1344955 | M3.9 8MM PAN HD SCREW | | 77 | 1310159 | M4 X 6MM PAN HD SCREW |
| | 20 | 1348696 | SCREW | | 78 | 1310210 | M4.3 EXT TOOTH WASHER |
| | 21 | 1343533 | M5 LOCK WASHER | | 79 | 1310135 | M4 X 8MM FLAT HD SCREW |
| | 22 | 1341439 | BALL BEARING | | 80 | 1348715 | BRACKET |
| | 23 | 1348699 | BUSHING | | 81 | 1348706 | POINTER |
| | 24 | 1348700 | COUNTER WEIGHT | | 82 | 1243520 | M6.1 LOCK WASHER |
| | 25 | 1345016 | M6 X 8MM HEX SOC SET SCREW | | 83 | 1341046 | M6 X 8MM CHEESE HD SCREW |
| | 26 | 1348698 | CONNECTING ROD | | 84 | 1343642 | M6 LOCK NUT |
| | 27 | 1344956 | RETAINER | | 85 | n 901217 | TABLE, T2 |
| | 28 | 1246051 | M5 X 12MM HEX SOC HD SCREW | | | 1348702 | TABLE, T1 |
| | 29 | 1343633 | TOP BLADE CLAMP | | 85A | 1246182 | M3 X 8MM SPRING PIN |
| | 30 | n 901221 | UPPER ARM W/BUSHING, T2 | | 85B | n 900200 | TABLE INSERT, T2 |
| | | 1348693 | UPPER ARM W/BUSHING, T1 | | 85B | 1343640 | TABLE INSERT, T1 |
| | 31 | OPTIONAL | BLADE | | 85C | 1246101 | M5 X 28MM SPRING PIN |
| | 32 | 1343634 | M5 SQUARE NUT | | 86 | 1348703 | PIVOT BOLT |
| | 33 | 1246109 | M5 X 16MM SPRING PIN | | 87 | 1348704 | TILT BRACKET |
| | 34 | 1344954 | M14.2 WAVE WASHER | | 88 | n 900205 | CLAMP ASSY, T2 |
| | 35 | 1343622 | PIVOT BOLT | | | 1343602 | CLAMP ASSY, T1 |
| | 36 | n 901223 | LEVER, T2 | | 89 | 1343533 | M5 LOCK WASHER |
| | | 1348707 | LEVER, T1 | | 89A | 1246102 | M5.3 FLAT WASHER |
| | 37 | 1344047 | M2.5 X 20MM SPRING PIN | | 90 | 1342455 | M5 X 10MM PAN HD SCREW |
| | 38 | 1348709 | ADJ NUT | | 91 | 1246140 | M6.4 FLAT WASHER |
| | 39 | 1348710 | WEDGE | | 92 | 428-07-101-0002 | 6MM HEX WRENCH |
| | 40 | 1348708 | COVER | | 93 | 422-29-101-0002 | 4MM HEX WRENCH |
| | 41 | 1343599 | TOOL HOLDER | | | | |
| | 42 | 1343648 | BLADE WRENCH | | | | |
| | 43 | 1246021 | M5 X 10MM FLAT HD SCREW | | | | |
| | 44 | 1246135 | M6 X 16MM FLAT HD SCREW | | | | |
| | 45 | n 901224 | NAMEPLATE, T2 | | | | |
| | | 1344369 | NAMEPLATE, T1 | | | | |
| | 46 | 1348712 | ROD | | | | |
| | 47 | 1348711 | SPRING | | | | |
| | 48 | 1348713 | BOTTOM WEDGE | | | | |
| | 49 | n 901222 | LOWER ARM W/BUSHING, T2 | | | | |
| | | 1348694 | LOWER ARM W/BUSHING, T1 | | | | |
| | 50 | 1344954 | M14.2 WAVE WASHER | | | | |
| | 51 | 1343622 | PIVOT BOLT | | | | |

STANDARD SAFETY EQUIPMENT

In order to promote tool safety, Delta Machinery strictly enforces the policy of repairing or replacing any damaged or missing standard safety equipment on machines presented to Delta Authorized Service Centers for service/repairs. Any product that is presented to a Delta Authorized Service Centers for repairs which contains missing or damaged standard safety equipment will have that equipment repaired or replaced and the customer will be charged for any such service/repairs. Customers can avoid such charges only if the missing safety component is supplied to the service center at the time of repair.

This parts list is provided to aid in obtaining service parts. Copies of the instruction and maintenance literature can be obtained through the Delta Technical Publications Department or through your service outlet.