

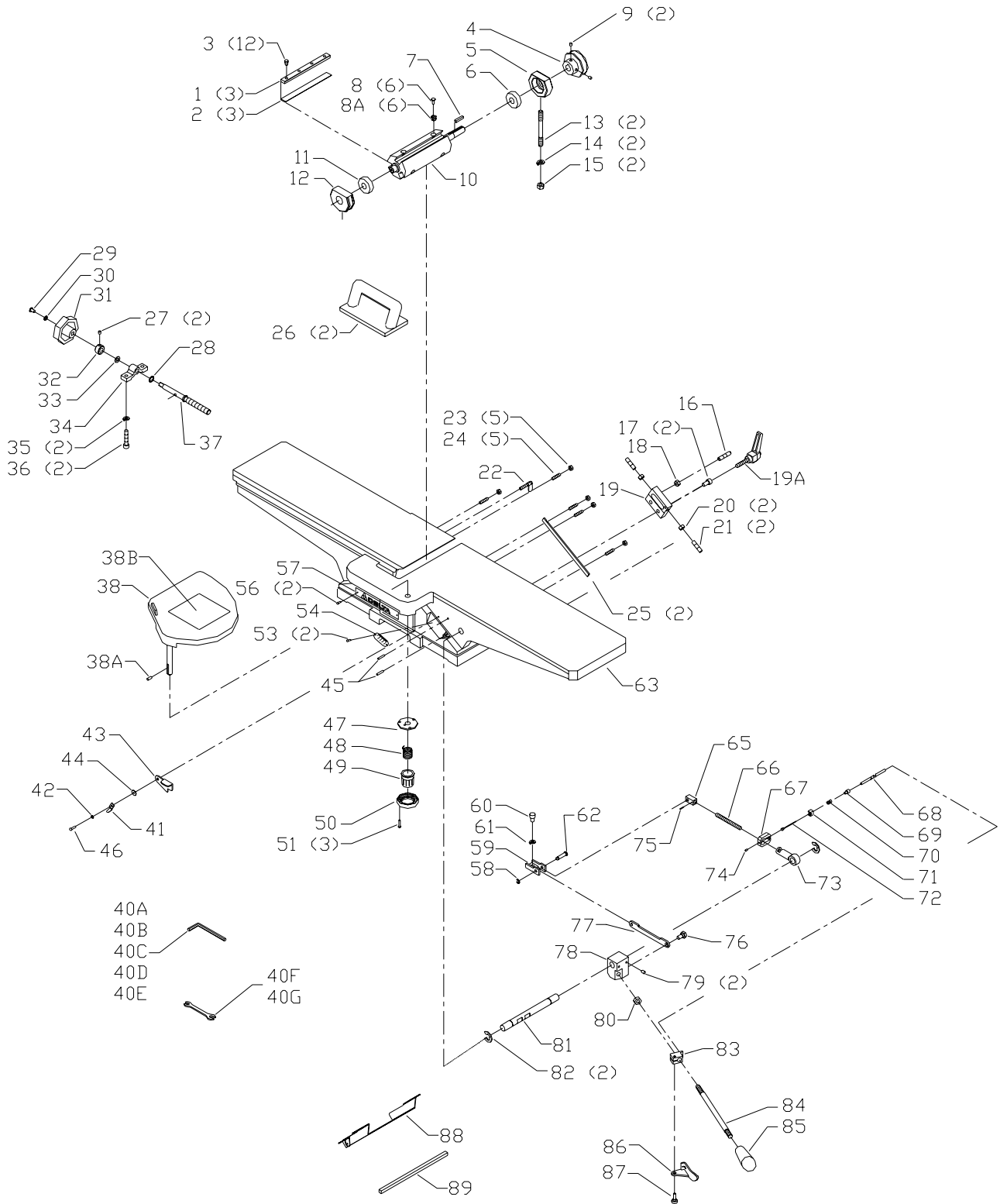


# 37-195 & 37-275X 6" PROFESSIONAL JOINTER

# J-21

PART NO. 909996

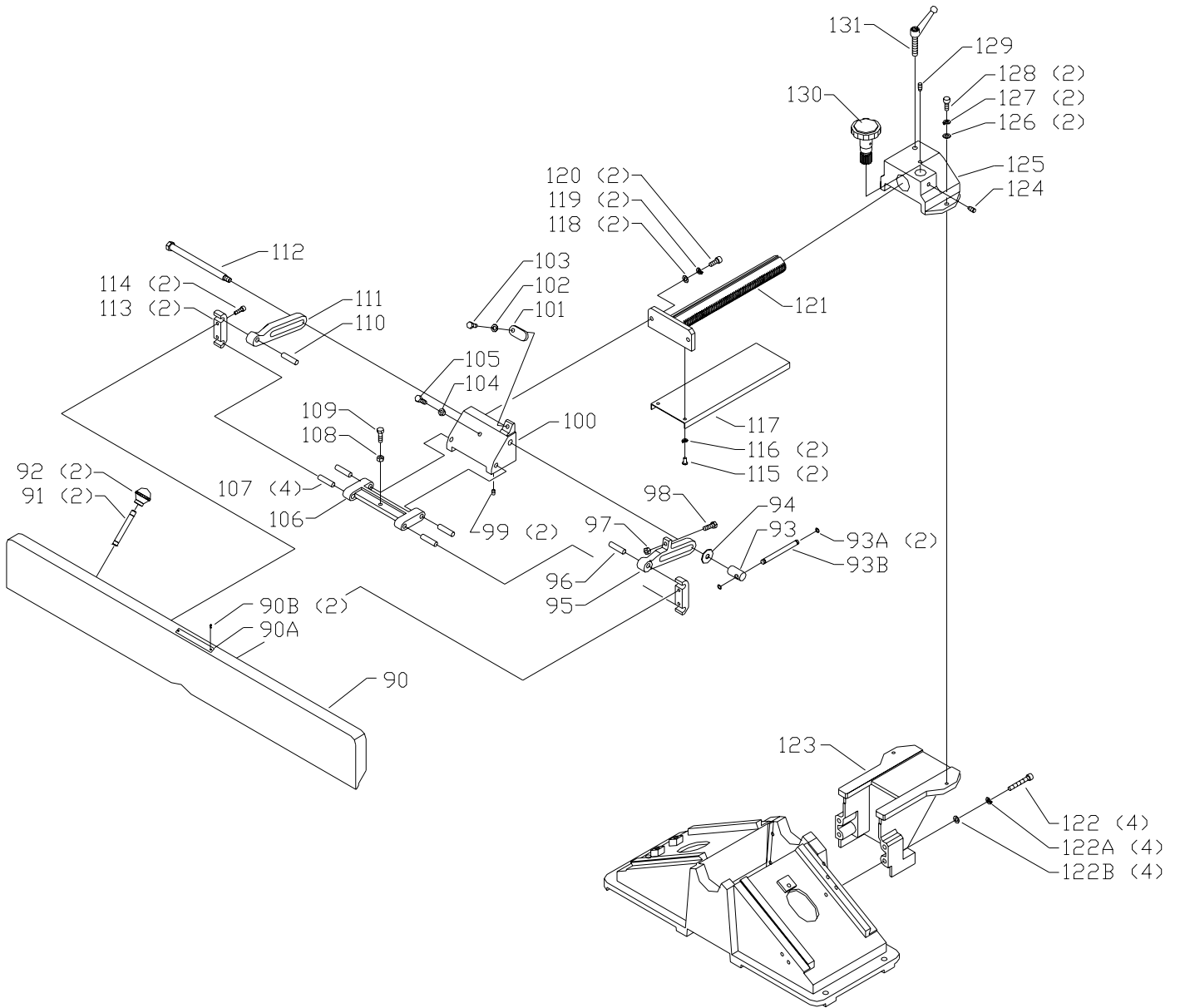
DATE: 09-13-04



# REPLACEMENT PARTS

Ref.			Ref.		
<u>No.</u>	<u>Part No.</u>	<u>Description</u>	<u>No.</u>	<u>Part No.</u>	<u>Description</u>
*	737191	CUTTERHEAD ASSY, INCL:	40G	1347832	12 X 14MM OPEN END WRENCH
1	1340195	BAR	41	1346752	POINTER
2	37-658	KNIVES (SET OF 3)	42	1343545	M4.1 FLAT WASHER
3	1340196	KNIFE SCREW	43	1346753	STOP
4	910005	PULLEY	44	1346754	SPACER
5	909544	SUPPORT RH, 37-195 T2, 37-275X	45	1310311	M4 X 22MM SPRING PIN
	1340113	SUPPORT RH, 37-195 T1	46	1246154	M4 X 16MM CHEESE HD SCREW
6	1086894	BEARING	47	1340132	PLATE
7	1340114	KEY	48	1340133	SPRING
8	1246008	M5 X 12MM HEX SOC SET SCREW	49	1340134	CUP
8A	1330112	NUT	50	1340135	RETAINER
9	1243321	M6 X 10MM HEX SOC SET SCREW	51	1310161	M4 X 18MM PAN HD SCREW
10	1340115	CUTTERHEAD	53	1310016	5MM DRIVE SCREW
11	920-04-010-5355	BEARING	54	1340137	SCALE
12	909545	SUPPORT LH, 37-195 T2, 37-275X	56	1310016	5MM DRIVE SCREW
	1340116	SUPPORT LH, 37-195 T1	57	909546	NAMEPLATE, 37-195 T2
13	1340117	STUD		1346699	NAMEPLATE, 37-195 T1
14	1243360	M10.2 LOCK WASHER	58	1330670	EXT RET RING
15	1243496	M10 HEX NUT	59	1340140	BRACKET
16	1340118	STOP SCREW	60	1246122	M8 X 16MM HEX SOC HD SCREW
17	1246122	M8 X 16MM HEX SOC HD SCREW	61	1246157	M8.1 LOCK WASHER
18	1243398	M8 HEX NUT	62	1346755	PIN
19	909548	BLOCK, 37-195 T2, 37-275X	63	NOT AVAILABLE	BASE ASSY (SEE NOTE A)
	1346750	BLOCK, 37-195 T1	65	1346757	LINK BLOCK
19A	1346751	LOCK LEVER ASSY	66	1346758	STUD
20	1243398	M8 HEX NUT	67	1346759	BRACKET
21	1246150	M8 X 25MM HEX SOC SET SCREW	68	1346769	TUBE
22	1340120	LOCKSCREW	69	1346760	GROMMET
23	1243456	M6 HEX NUT	70	1346761	SPRING
24	1246187	M6 X 25MM HEX SOC SET SCREW	71	1346762	STOP NUT
25	1340121	GIB	72	1346763	CABLE ASSY
26	37-108	JOINTER PUSH BLOCK	73	1346764	COLLAR
27	1310055	M6 X 6MM HEX SOC SET SCREW	74	1243339	M6 X 8MM HEX SOC SET SCREW
28	1347020	M11.5 FLAT WASHER	75	1346772	M2 X 12MM SPRING PIN
29	1345859	M6 X 12MM BUTTON HD SCREW	76	1340142	SPECIAL BOLT
30	1340622	M6.4 FLAT WASHER	77	1346756	LINK
31	1340122	KNOB	78	909550	BLOCK, 37-195 T2, 37-275X
32	1340123	COLLAR		1346773	BLOCK, 37-195 T1
33	1347020	M11.5 FLAT WASHER	79	1243339	M6 X 8MM HEX SOC SET SCREW
34	1340124	BLOCK	80	1243496	M10 HEX NUT
35	1246157	M8.1 LOCK WASHER	81	1346774	SHAFT
36	1246006	M8 X 50MM HEX SOC HD SCREW	82	1246027	EXT RET RING
37	1340125	SCREW SHAFT	83	1346768	BRACKET
38	1340126	GUARD, INCL:	84	1346766	LEVER ROD
38A	1246008	M5 X 12MM HEX SOC SET SCREW	85	1346767	KNOB, 37-195
38B	1346696	WARNING LABEL		912060	KNOB, 37-275X
40A	n 891903	2.5MM HEX WRENCH	86	1346765	LEVER
40B	428-06-101-0002	3MM HEX WRENCH	87	1342389	SPECIAL SCREW
40C	422-29-101-0002	4MM HEX WRENCH	88	1340147	DUST CHUTE
40D	428-07-101-0002	6MM HEX WRENCH	89	1330689	SEAL
40E	422-30-101-0002	8MM HEX WRENCH			
40F	1343918	8 X10MM OPEN END WRENCH	*	NOT SHOWN ASSEMBLED	

**NOTE A:** BASE, FRONT AND REAR TABLES CANNOT BE SUPPLIED BECAUSE THEY MUST BE MACHINED TOGETHER FOR ACCURACY AND TRUE ALIGNMENT MAKING THIS REPAIR COST PROHIBITIVE.

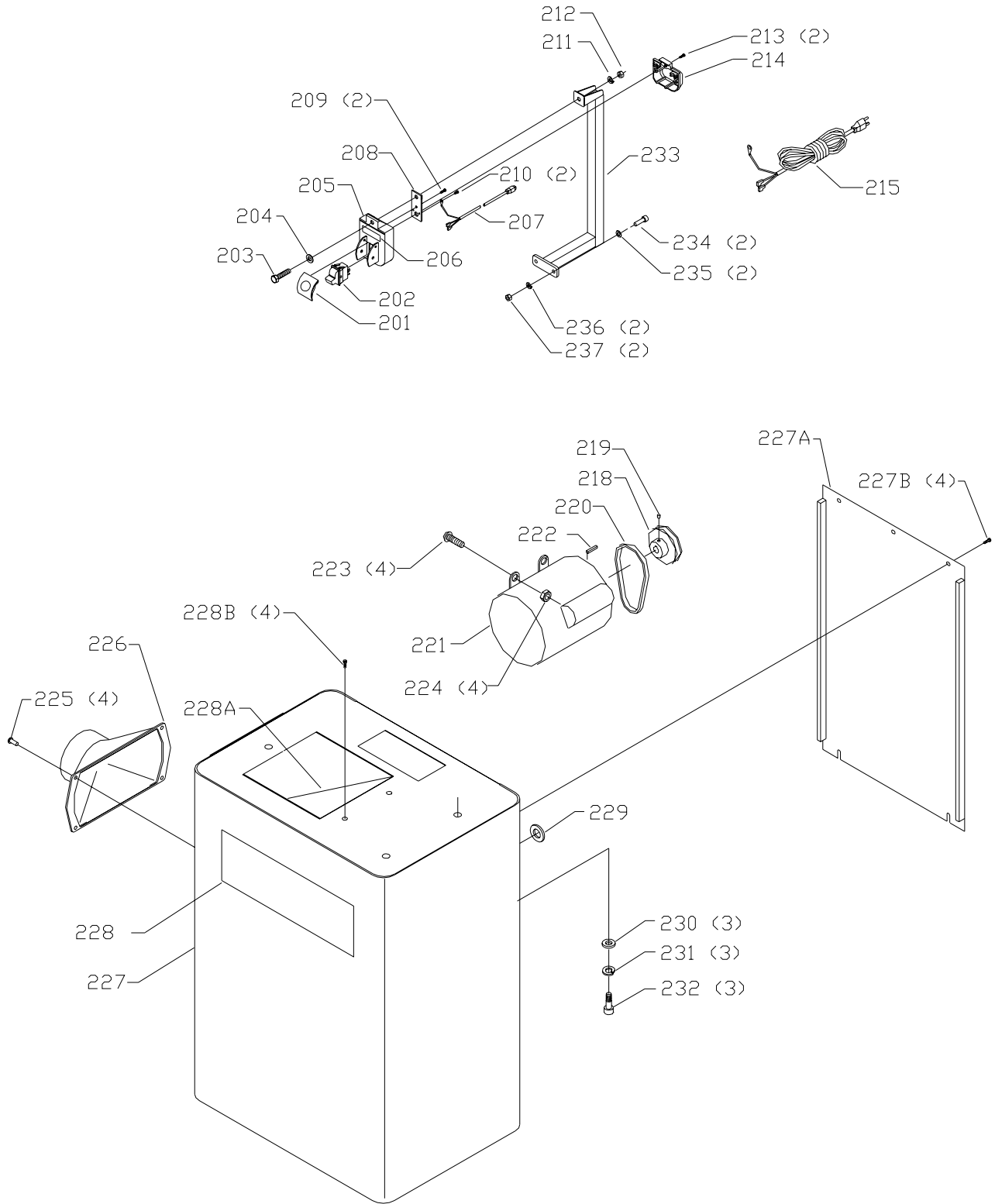


# REPLACEMENT PARTS

<u>Ref.</u>	<u>No.</u>	<u>Part No.</u>	<u>Description</u>
*		909615	FENCE ASSY, INCL.:, 37-195 T2, 37-275X
*		1346728	FENCE ASSY, INCL.:, 37-195 T1
90		909555	FENCE, INCL.:, 37-195 T2, 37-275X
		900980	FENCE, INCL.:, 37-195 T1
90A		1346697	WARNING LABEL
90B		1310016	5MM DRIVE SCREW
91		1340150	STUD
92		1340149	KNOB, 37-195
	n	910820	KNOB, 37-275X
93		1346730	LOCKNUT
93A		1340665	O-RING
93B		1346732	LOCK BAR
94		1246116	M10.5 FLAT WASHER
95		909552	RIGHT BRACKET, 37-195 T2, 37-275X
		1346734	RIGHT BRACKET, 37-195 T1
96		1346749	PIN
97		1243398	M8 HEX NUT
98		1246016	M8 X 25MM HEX HD SCREW
99		1243379	M6 X 10MM HEX SOC HD SCREW
100	n	909584	FENCE BRACKET, 37-195 T2, 37-275X
		1346735	FENCE BRACKET, 37-195 T1
101		1346736	STOP
102		1344330	M8 FLAT WASHER
103		1310105	M8 X 16MM HEX HD SCR (NOTE B)
104		1243398	M8 HEX NUT
105		1246016	M8 X 25MM HEX HD SCREW
106		909554	SUPPORT, 37-195 T2, 37-275X
		1346737	SUPPORT, 37-195 T1
107		1346749	PIN
108		1243398	M8 HEX NUT, 37-195 T1
109		1246016	M8 X 25MM HEX HD SCREW
110		1346749	PIN
111		909553	LEFT BRACKET, 37-195 T2, 37-275X
		1346738	LEFT BRACKET, 37-195 T1
112		1346739	SPECIAL SCREW
113		1346740	REAR CLAMP
114		1243336	M6 X 20MM HEX SOC HD SCREW
115		1345859	M6 X 12MM BUTTON HD SCREW
116		1243520	M6.1 LOCK WASHER
117		1346741	GUARD
118		1344330	M8 FLAT WASHER
119		1246157	M8.1 LOCK WASHER
120		1246053	M8 X 25MM HEX SOC HD SCREW
121		909556	RAM, 37-195 T2, 37-275X
		1346742	RAM, 37-195 T1
122		1340194	M8 X 55MM HEX SOC HD SCREW
122A		1246157	M8.1 LOCK WASHER
122B		1344330	M8 FLAT WASHER
123		909558	BRACKET, 37-195 T2, 37-275X
		1346743	BRACKET, 37-195 T1
124		1346744	SPECIAL SCREW
125		909557	BRACKET, 37-195 T2, 37-275X
		1346745	BRACKET, 37-195 T1
126		1344330	M8 FLAT WASHER
127		1246157	M8.1 LOCK WASHER
128		1246054	M8 X 20MM HEX SOC HD SCREW
129		1346744	SPECIAL SCREW
130		1346746	HANDWHEEL
131		1346747	LEVER ASSY

\* NOT SHOWN ASSEMBLED

**NOTE B:** WHEN SEVICING, USE THREAD RETAINING COMPOUND PRIOR TO INSTALLATION.



# REPLACEMENT PARTS

Ref.	No.	Part No.	Description
*		52-866	STAND, INCL.:; 37-195 T2, 37-275X
*		52-858	STAND, INCL.:; 37-195 T1
*		438-01-317-0146	SWITCH ASSY, INCL.:
201		422-39-067-0001	SWITCH ACTUATOR
202		438-01-017-0206	SWITCH
203		901-01-060-0649	5/16-18 X 1" HEX HD SCREW
204		904-01-010-1620	FLAT WASHER
205		422-39-014-0009	SWITCH BOX COVER, INCL.:
206		436-01-754-0007	SWITCH LABEL, 37-195 T2
		1346700	SWITCH LABEL, 37-195 T1
		436-01-754-0006	SWITCH LABEL, 37-275X
207		438-01-302-0718	FEMALE CORD ASSY
208		422-39-089-0007	SWITCH PLATE
209		901-05-163-1229	#10-16 X 1/2" PAN HD SCREW
210		901-05-163-1229	#10-16 X 1/2" PAN HD SCREW
211		904-02-010-1703	5/16" LOCK WASHER
212		902-01-010-1300	5/16-18 HEX NUT
213		901-05-163-1229	#10-16 X 1/2" PAN HD SCREW
214		422-39-013-0001	SWITCH BOX
215		438-01-302-0672	CORD SET
218		926-04-013-1787	PULLEY, INCL.:
219		901-04-150-0205	5/16-18 X 3/8" HEX SOC SET SCREW
220		925-01-033-1710	V BELT
221		912061	MOTOR ASSY, INCL.:; 37-195 T2, 37-275X
		438-02-314-2174	MOTOR ASSY, INCL.:; 37-195 T1
222		927-03-010-2650	KEY
223		901-11-020-0834	5/16-18 X 1/4" HEX SOC SET SCREW
224		902-01-503-1514	5/16-18 FLANGE NUT
225		901-05-213-1711	#10-16 X 1/2" HEX WASHER HD SCREW
226		910353	DUST CHUTE, 37-195 T2, 37-275X
		406-12-026-0001	DUST CHUTE, 37-195 T1
227		909560	CABINET ASSY, INCL.:; 37-195 T2, 37-275X
	n	909560	CABINET ASSY, INCL.:; 37-195 T1
227A		909559	SIDE PANEL, 37-195 T2, 37-275X
		436-01-123-0002	SIDE PANEL, 37-195 T1
227B		901-06-443-1806	#10-24 X 1/2" HEX HD SCREW
228		436-01-754-0004	NAMEPLATE, 37-195 T2
		1346695	NAMEPLATE, 37-195 T1
		436-01-754-0005	NAMEPLATE, 37-275X
228A		436-01-026-0005	DUST CHUTE
228B		901-06-443-1806	#10-24 X 1/2" HEX HD SCREW
229		438-01-011-0051	BUSHING INSULATOR
230		1243502	M10 FLAT WASHER
231		1243360	M10.2 LOCK WASHER
232		1246100	M10 X 20MM HEX SOC HD SCREW
233		1346748	SWITCH MOUNTING BRACKET
234		1243530	M8 X 30MM HEX SOC HD SCREW
235		1344330	M8 FLAT WASHER
236		1246157	M8.1 LOCK WASHER
237		1243398	M8 HEX NUT
*			NOT SHOWN ASSEMBLED

---

## STANDARD SAFETY EQUIPMENT

In order to promote tool safety, Delta Machinery strictly enforces the policy of repairing or replacing any damaged or missing standard safety equipment on machines presented to Delta Authorized Service Centers for service/repairs. Any product that is presented to a Delta Authorized Service Center for repair with damaged or missing standard safety equipment will have that equipment repaired or replaced and the customer will be charged for any such service/repairs. Customers can avoid such charges only if the missing safety component is supplied to the service center at the time of repair.

This parts list is provided to aid in obtaining service parts. Copies of the instruction and maintenance literature can be obtained through the Delta Technical Publications Department, your service outlet, or by visiting the Delta Website @ [www.deltamachinery.com](http://www.deltamachinery.com).