

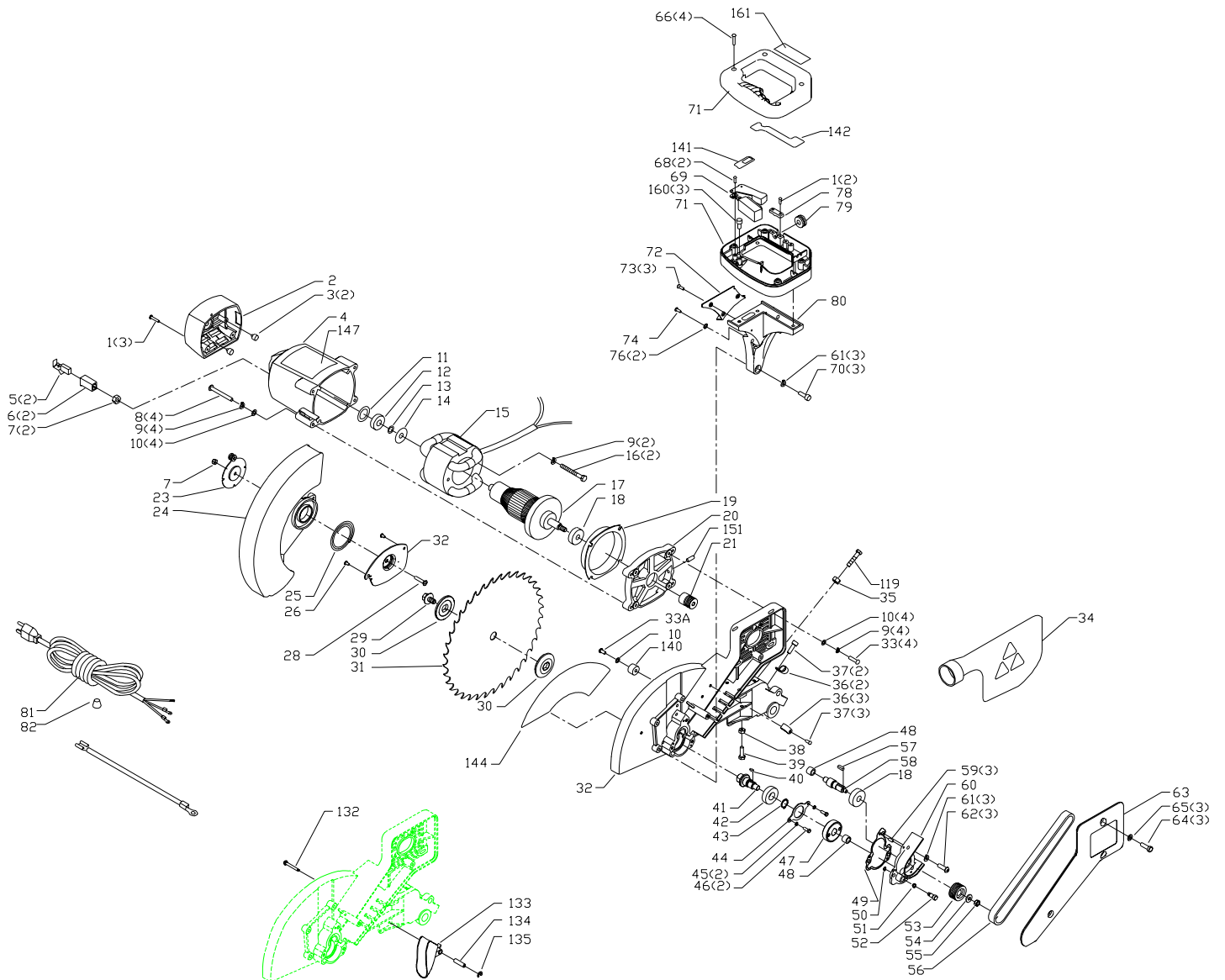


# 36-585 10" DUAL BEVEL MITER SAW

## MB-3A

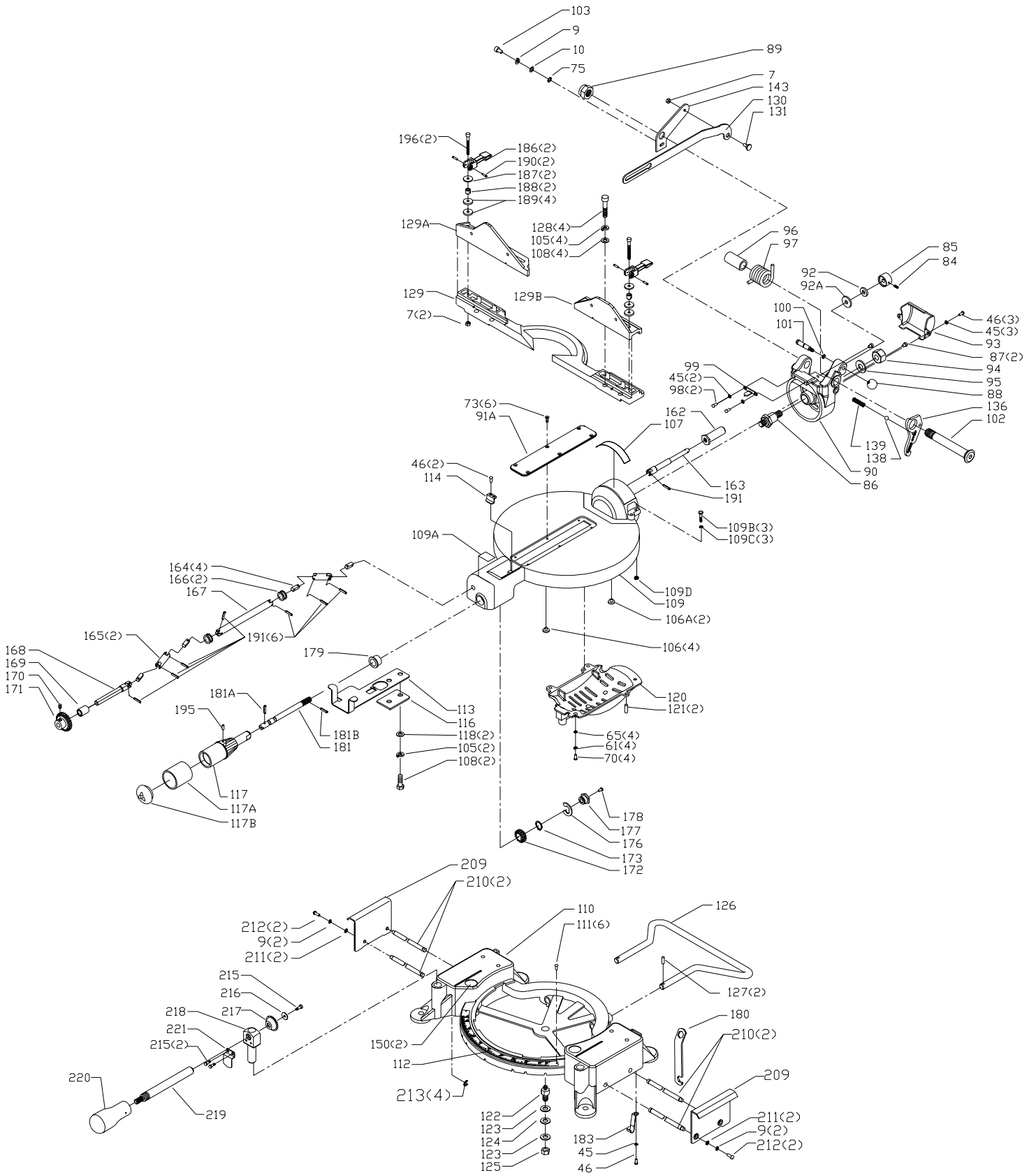
PART NO. 910639

DATE 10-31-03



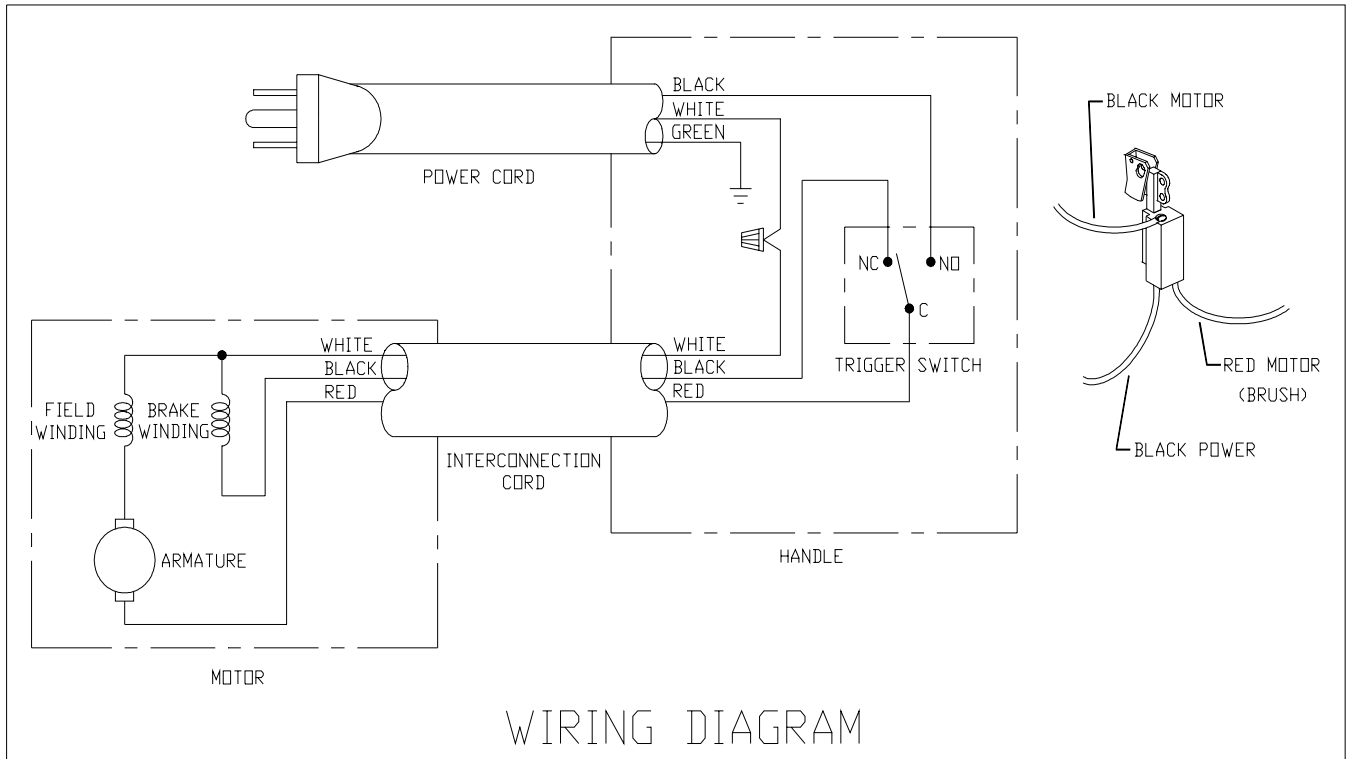
# REPLACEMENT PARTS

<u>Ref.</u>	<u>Part No.</u>	<u>Description</u>	<u>Ref.</u>	<u>Part No.</u>	<u>Description</u>
1	901615	M4X16 SCREW	62	1246104	HEX SOC HD SCREW
2	901612	END COVER	63	901634	MOTOR M/COVER
3	1343271	PAD	64	1310157	PAN HD SCREW
4	901613	MOTOR HOUSING	65	1246140	FLAT WASHER
5	1347143	BRUSH	66	901636	PAN HD M4 X SCREW
6	1347142	BRUSH HOLDER	68	901685	PAN HD M4 X SCREW
7	1343504	LOCK NUT	69	1346333	SWITCH
8	901614	M5X55 SCREW	70	1246004	HEX SOC HD SCREW
9	1343538	LOCK WASHER	71	904368	HANDLE SET
10	1246102	FLAT WASHER	72	901639	HANDLE M/COVER
11	1343267	WAVE WASHER	73	1246117	FLAT HD SCREW
12	920-08-020-5352	BALL BEARING	74	1341235	CHEESE HD SCREW
13	1348661	SPECIAL WASHER	76	1320102	LOCK WASHER
14	1348660	SPECIAL WASHER	78	1345695	CORD CLAMP
15	901616	FIELD	79	1343019	3/8" GROMMET
16	n 1310148	M5 X 60MM SCREW	80	901640	HANDLE MOUNT
17	901617	ARMATURE	81	901641	POWER CORD
18	1310042	BALL BEARING	82	438-01-007-0042	WIRE NUT
19	1347138	FAN BAFFLE	119	1246017	HEX HD SCREW
20	901619	BEARING HSG.	132	901645	DUST CHUTE PIN
21	901620	MOTOR PULLEY	133	901643	DUST CHUTE
23	1345433	PLATE	134	901690	SLEEVE BUSHING
24	899898	LOWER GUARD	135	900023	RETAINING RING
25	1342998	SPRING	140	1345430	GUARD BUMPER
26	1343053	PAN HD SCREW	141	901817	INSULATING PAPER
28	1343054	CARRIAGE SCREW	142	901818	INSULATING PAPER
29	1347151	BLADE BOLT	144	911410	NAME INDUSTRIAL
30	1347150	OUTER FLANGE	147	899864	WARNING LABEL
31	SEE CATALOG	BLADE	151	911416	M6X16MM SET SCREW
32	903441	UPPER ARM ASSY.	161	899917	WARNING LABEL
33	1344933	HEX SOC HD SCREW	214	910641	HARDWARE PKG
33A	1310006	ROUND HD SCREW			
34	900243	DUST BAG			
35	1243398	HEX NUT			
36	1330682	CLAMP			
37	1243394	CHEESE HD SCREW			
38	1243456	HEX NUT			
39	1246175	M6 X 30MM HEX HD SCREW			
40	901622	KEY M3 X 3 X 8			
41	901623	ARBOR SHAFT			
42	883095	BALL BEARING			
43	1341061	EXT RET RING			
44	901624	BEARING RETAINER			
45	1343545	FLAT WASHER			
46	1342455	M5 X 10 CHEESE HD SCREW			
47	901625	HELICAL GEAR			
48	1343259	NEEDLE BEARING			
49	901626	GASKET			
50	901687	RTNG RING			
51	901627	SPRING			
52	901628	ARBOR LOCK PIN			
53	901629	PINION SHAFT PULLEY			
54	1340654	FLAT WASHER			
55	903286	HEX M6 X 1.0 NUT			
56	901630	BELT			
57	901631	KEY M4 X 4 X 14			
58	901632	JACKSHAFT			
59	1342607	DOWEL PIN			
60	901633	GEAR HOUSING CAP			
61	1243520	LOCK WASHER			



# REPLACEMENT PARTS

<u>Ref.</u>	<u>Part No.</u>	<u>Description</u>	<u>Ref.</u>	<u>Part No.</u>	<u>Description</u>
7	1343504	LOCK NUT	129	911405	FENCE
9	1343538	LOCK WASHER	129A	911406	L/SLIDING FENCE
10	1246102	FLAT WASHER	129B	911407	R/SLIDING FENCE
45	1343545	FLAT WASHER	130	901653	BLADE GUARD LINKAGE
46	1342455	M5 X 10 CHEESE HD SCREW	131	1349953	SPECIAL SCREW
61	1243520	LOCK WASHER	136	911408	FLIP STOP
65	1246140	FLAT WASHER	138	1243426	STEEL BALL
70	1246004	HEX SOC HD SCREW	139	901691	CPRSN SPRING
73	1246117	FLAT HD SCREW	143	1349489	MOUNTING PLATE
75	1320101	LOCK WASHER	150	1348257	WARNING LABEL
84	1246118	SPRING PIN	160	1246056	HEX SOC HD SCREW
85	911386	LOCK CUP	162	911417	LOCK NUT REAR
86	906549	PIVOT BOLT	163	911418	REAR LOCK SHAFT
87	1349811	BUMPER	164	911419	JOINT DRIVER U
88	911396	KNOB	165	911420	JOINT SEGMENT U
89	901688	M16 NUT	166	911421	LOCK SHAFT BUSHING
90	911387	BEVEL GAGE	167	911422	MIDDLE LOCK SHAFT
91A	906524	TABLE INSERT	168	911423	FRONT LOCK SHAFT
92	906546	WASHER	169	906560	SPACER
92A	911388	WASHER	170	906528	HEX SOC SET SCREW
93	901442	PINCH GUARD	171	906526	LOCK SHAFT GEAR
94	1343492	LOCK NUT	172	906537	LOCK KNOB GEAR
95	911389	WASHER	173	1348273	INT RET RING
96	1349817	SPRING SLEEVE	176	1246027	EXT RET RING
97	1349816	SPRING	177	906540	SPECIAL NUT
98	1310159	4M X 6MM PAND HD SCREW	178	1347119	PAD
99	911390	CURSOR (BEVEL SCALE)	179	906534	BUSHING
100	901648	RING M8 X 4. O	180	1342906	WRENCH
101	911392	STOP PIN	181	911424	LOCK KNOB SHAFT
102	911397	PIVOT BOLT	181A	906233	3 X 22 MM SPRING PIN
103	1246051	HEX SOC HD SCREW	181B	1246147	3 X 14 MM SPRING PIN
105	1246157	LOCK WASHER	183	906557	SPRING
106	1343008	NYLON INSERT	186	911425	FENCE LOCK CLAMP
106A	911399	NYLON INSERT	187	911426	FENCE WASHER
107	911400	BEVEL SCALE	188	911427	FENCE SPACER
108	1246034	HEX HD SCREW	189	911428	FENCE WASHER
109	911402	TABLE	190	911429	FENCE CLAMP PIN
109A	906073	INSTRUCTION LABEL	191	911430	FENCE CLAMP PIN
109B	1343101	5 X 25 MM HEX HD SCREW	195	911431	SPECIAL SET SCREW
109C	1243395	M5 HEX NUT	196	1345349	HEX SOC HD SCREW
109D	1346043	5 X 10 MM HEX SOC SET SCREW	209	906556	EXTENSION WING
110	906555	BASE	210	1345426	SHAFT
111	1310016	DRIVE SCREW	211	1346291	FLAT WASHER
112	906511	MITER SCALE	212	1246047	CHEESE HD SCREW
113	906536	DETENT SPRING	213	1246064	EXT RET RING
114	906525	POINTER	215	901-02-010-0561	10-32 X 3/8" RND HD SCREW
116	906535	DETENT SPRING PLATE	216	900227	WASHER
117	911403	HANDLE ASSY	217	1345550	CLAMP CUP
117A	906530	LOCK KNOB SLEEVE	218	1345549	SUPPORT
117B	900187	CAP PAD	219	1345547	SHAFT
118	1243526	FLAT WASHER	220	899862	KNOB SOFT GRIP
120	911404	BELLY PAN	221	1345548	RETAINER
121	901655	DOWEL M6 X 1 PIN			
122	1347120	PIVOT STUD			
123	1243502	FLAT WASHER			
124	1343275	SPRING			
125	1341996	LOCK NUT			
126	911391	HANDLE			
127	911544	COTTER PIN			
128	1243530	HEX SOC HD SCREW			




---

#### STANDARD SAFETY EQUIPMENT

In order to promote tool safety, Delta Machinery strictly enforces the policy of repairing or replacing any damaged or missing standard safety equipment on machines presented to Delta Authorized Service Centers for service/repairs. Any product that is presented to a Delta Authorized Service Centers for repairs which contains missing or damaged standard safety equipment will have that equipment repaired or replaced and the customer will be charged for any such service/repairs. Customers can avoid such charges only if the missing safety component is supplied to the service center at the time of repair.

*This parts list is provided to aid in obtaining service parts. Copies of the instruction and maintenance literature can be obtained through the Delta Technical Publications Department or through your service outlet.*