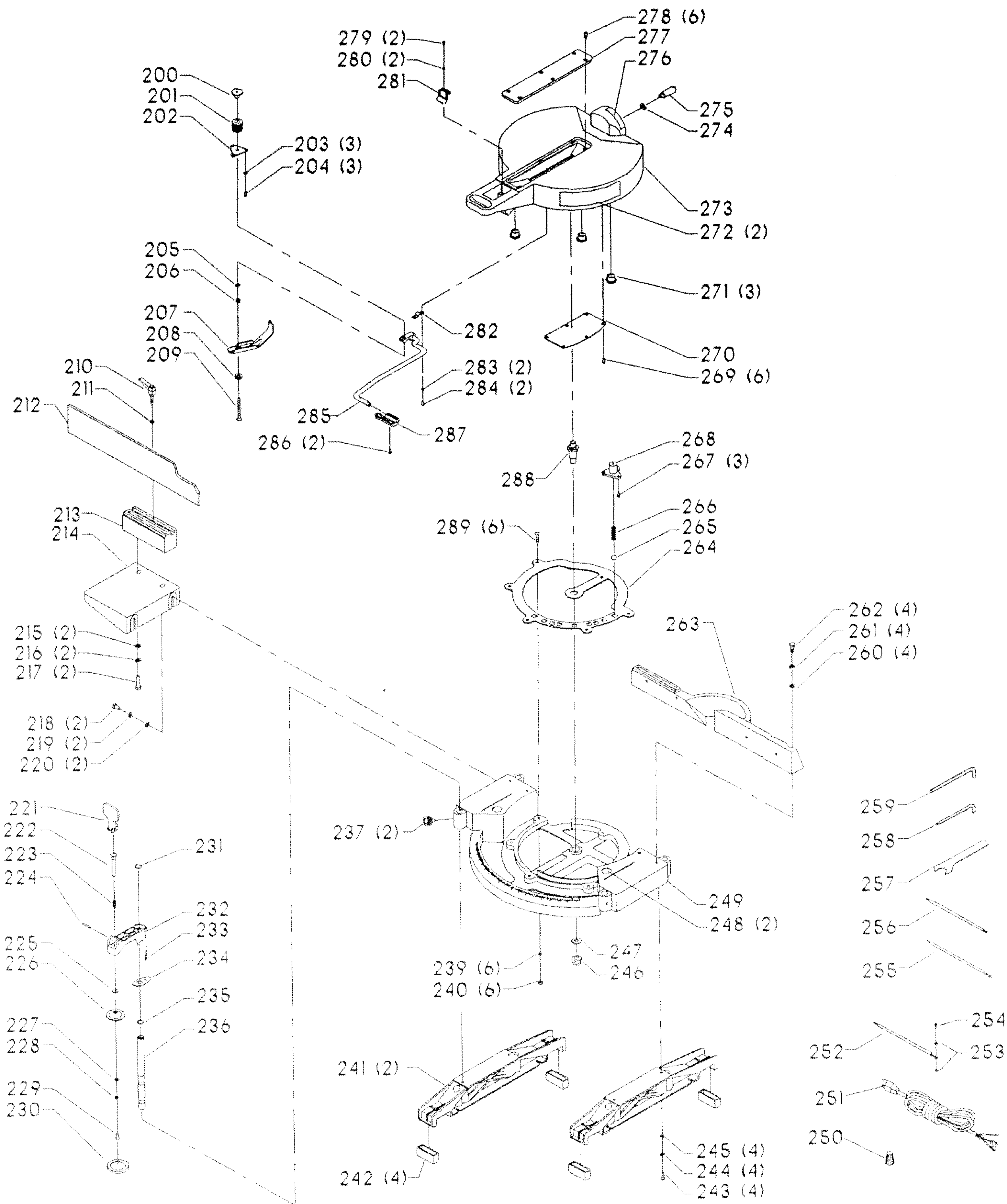


REPLACEMENT PARTS

<u>REF. NO.</u>	<u>PART NUMBER</u>	<u>DESCRIPTION</u>	<u>REF. NO.</u>	<u>PART NUMBER</u>	<u>DESCRIPTION</u>
1	901-02-120-1711	#10-32 X 3/8" TRUSS HD SCR	*	1348243	MOTOR ASSY, INCL:
2	1347287	M5 PUSH NUT	58	1347295	JACKSHAFT ASSY
3	1347286	WHEEL	59	1347291	(DIN 7985) M6 X 12MM PAN HD SCR
4	1347285	BUSHING	60	1243520	(DIN 7980) M6.1 LOCK WASHER
5	1343504	(DIN 985) M5 LOCK NUT	61	1243407	EXT RET RING
6	1347280	PLATE	62	1341834	BALL BEARING
7	1347268	BLADE GUARD	63	1347247	GEAR HOUSING
7A	1347194	LABEL	64	1243520	(DIN 7980) M6.1 LOCK WASHER
8	1347271	GUARD MOUNT	65	1346716	(DIN 7985) M6 X 25MM PAN HD SCR
9	1342998	SPRING	66	1330258	EXT RET RING
10	1343054	(DIN 603) M5 X 10MM CARRIAGE HD SCR	67	1347260	ARBOR LOCK PIN
11	1342989	ARBOR BOLT	68	1348261	SPRING
12	1347232	OUTER BLADE FLANGE	69	1347587	RING
13	1347267	PIVOT BOLT	70	400-08-139-0008	BALL BEARING
14	1347289	GUARD STOP	71	1347588	ARMATURE
15	1347288	SPECIAL SCR	72	1344026	(DIN 85) M5 X 65MM PAN HD SCR
16	OPTIONAL	BLADE (SEE NOTE A)	73	1343538	(DIN 7980) M5.1 LOCK WASHER
17	1347233	INNER BLADE FLANGE	74	1348262	FIELD
18	901-01-060-0629	5/16-18 X 3/8" HEX HD SCR	75	400-08-139-0011	BALL BEARING
21	1347290	(DIN 7985) M6 X 35MM PAN HD SCR	75A	1348661	SPECIAL WASHER
22	1243520	(DIN 7980) M6.1 LOCK WASHER	75B	1348660	SPECIAL WASHER
23	1347246	UPPER ARM, INCL:	76	1343267	WAVE WASHER
24	1347195	NAMEPLATE	77	1345470	HOUSING
25	1349516	WARNING LABEL	77A	1343504	(DIN 985) M5 LOCKNUT
26	901-02-120-7528	1/4-20 X 1/2" TRUSS HD SCR	77B	1349622	BLOCK
27	904-01-031-7709	1/4" FLAT WASHER	78	1347196	MOTOR NAMEPLATE
28	1347308	DUST SHROUD (CMO)	79	1246140	(DIN 125) M6.4 FLAT WASHER
28A	1347309	DUST SPOUT (CMO)	80	1243520	(DIN 7980) M6.1 LOCK WASHER
28B	1347261	DUST SPOUT (EMO)	81	1347226	(DIN 7985) M6 X 35MM PAN HD SCR
29	34-084	DUST BAG	82	1246008	(DIN 916) M5 X 12MM HEX SOC SET S
30	901-02-010-0593	#10-24 X 3/8" ROUND HD SCR	83	1348263	BRUSH HOLDER
30A	1342930	CLAMP	84	1348266	BRUSH
31	1344042	(DIN 913) M5 X 20MM HEX SOC SET SCR	85	1348267	BRUSH CAP
31A	1243395	(DIN 934) M5 HEX NUT	100	1347270	PLATE
32	901-01-060-0609	5/16-18 X 1 1/2" HEX HD SCR	101	1347250	STOP SCR
33	1346285	SPACER	102	1246001	(DIN 84) M5 X 12MM CHEESE HD SCR
34	1346272	BUSHING	103	1346291	WASHER
35	1347278	SPRING	104	1346290	SPACER
36	904-01-031-2937	FLAT WASHER	105	1347269	LINKAGE
37	1342922	5/16-18 LOCK NUT	106	1346290	SPACER
38	1347266	DEFLECTOR	107	1346291	WASHER
39	901-02-010-0559	#10-32 X 1/2" ROUND HD SCR	108	901-02-453-1123	#10-32 X 1/2" PAN HD SCR
40	1347284	WARNING LABEL	109	1347296	SPRING PLATE
41	1313227	(DIN 7513B) M4 X 12MM CHEESE HD SCR	110	1347251	LOCK DOWN PIN
42	1345695	CORD CLAMP	111	1330258	EXT RET RING
43	1313227	(DIN 7513B) M4 X 12MM CHEESE HD SCR	112	901-04-080-0109	1/4-20 X 1 1/2" HEX SOC SET SCR
44	1346333	SWITCH	113	902-01-120-1034	1/4-20 HEX NUT
45	1342063	(DIN 7971B) M3.5 X 10MM PAN HD SCR	114	901-05-163-1126	#08-32 X 5/16" PAN HD SCR
46	1347301	COVER PLATE	115	1347238	PINCH GUARD
47	1340622	M6.4 FLAT WASHER	116	1346330	CLIP
48	1243336	(DIN 912) M6 X 20MM HEX SOC HD SCR	117	1346325	WRENCH
49	1347304	LOWER HANDLE	118	1347293	LOCK NUT
50	1343019	3/8" GROMMET	119	1346288	WASHER
51	1343021	GROUND LUG	120	1347300	HANDLE
52	1313227	(DIN 7513B) M4 X 12MM CHEESE HD SCR	121	904-01-031-7706	3/8" FLAT WASHER
53	1320101	(DIN 6797A) M5.3 EXT TOOTH WASHER	125	1347237	BEVEL SUPPORT
54	1310143	(DIN 85) M5 X 8MM PAN HD SCR	126	901-02-010-0561	#10-32 X 3/8" ROUND HD SCR
55	1347303	TOP HANDLE	127	904-01-010-1609	FLAT WASHER
56	1344869	#08 X 3/4" PAN HD SCR	128	1347244	BEVEL POINTER
			129	901-04-150-1178	1/4-20 X 3/4" HEX SOC SET SCR
			130	902-01-120-1034	1/4-20 HEX NUT
			131	1347236	PIVOT STUD

* NOT SHOWN ASSEMBLED
 EMO = EARLY MODELS ONLY
 CMO = CURRENT MODELS ONLY

NOTE A: USE CROSS CUT BLADES ONLY! DO NOT USE BLADES
 DESIGNED FOR RIPPING, COMBINATION BLADES OR
 BLADES WITH EXCESSIVE HOOK ANGLES.



REPLACEMENT PARTS

<u>REF. NO.</u>	<u>PART NUMBER</u>	<u>DESCRIPTION</u>	<u>REF. NO.</u>	<u>PART NUMBER</u>	<u>DESCRIPTION</u>
200	1346305	RETAINER	245	904-01-031-7709	1/4" FLAT WASHER
201	1346306	SPRING	246	1347293	LOCK NUT
202	1347254	PLATE	247	1347252	WASHER
203	904-02-020-1725	3/16" LOCK WASHER	248	1348257	LABEL
204	901-02-453-1123	#10-32 X 1/2" PAN HD SCR	249	1347229	BASE
205	1349163	SPECIAL WASHER	250	438-01-007-0042	WIRE NUT
206	1350280	1/4-20 LOCK NUT	251	1345544	POWER CORD
207	1347281	BRAKE STRAP	252	1348268	GREEN WIRE
208	1347282	RETAINER	253	1320102	(DIN 6797A) M4.3 EXT TOOTH WASHER
209	1347292	1/4-20 X 2 1/2" FLAT HD SCR	254	1347527	(DIN 7985) M4 X 10MM PAN HD SCR
210	432-09-067-0001	CLAMP LEVER	255	1348269	RED WIRE
211	904-01-010-1603	1/4" FLAT WASHER	256	1348270	BLACK WIRE
212	1347305	FENCE SLIDE	257	1347283	WRENCH
213	1347302	FENCE SLIDE SUPPORT	258	955-03-020-2167	1/8" HEX WRENCH
214	1347307	EXTENSION TABLE	259	955-03-013-1490	5/32" HEX WRENCH
215	904-01-010-1604	5/16" FLAT WASHER	260	1243526	(DIN 125) M8.4 FLAT WASHER
216	904-02-010-1703	5/16" LOCK WASHER	261	904-02-010-1703	5/16" LOCK WASHER
217	901-01-060-0602	5/16-18 X 1 1/4" HEX HD SCR	262	901-01-060-0608	5/16-18 X 7/8" HEX HD SCR
218	901-01-060-0607	5/16-18 X 3/4" HEX HD SCR	263	1347306	FENCE
219	904-02-010-1703	5/16" LOCK WASHER	264	1347230	INDEXING RING
220	904-01-010-1604	5/16" FLAT WASHER	265	1342880	STEEL BALL
*	1347298	CLAMP ASSY, CONST OF:	266	1347276	SPRING
221	1346316	LEVER	267	901-03-033-1690	#10-32 X 5/8" FLAT HD SCR
222	1347263	PLUNGER	268	1347273	DETENT HOUSING
223	1346337	SPRING	269	901-02-030-0466	#08-32 X 3/8" FLAT HD SCR
224	1246023	(DIN 1481) M4 X 28MM SPRING PIN	270	1347274	PLATE
225	904-01-010-1603	1/4" FLAT WASHER	271	1346269	WEAR PAD
226	1342915	CUP	272	1347198	LABEL
227	904-01-010-1610	FLAT WASHER	273	1347234	ROTATING TABLE
228	904-02-010-1726	LOCK WASHER	274	1243360	(DIN 7980) M10.2 LOCK WASHER
229	901-02-010-0561	#10-32 X 3/8" ROUND HD SCR	275	1347259	STOP STUD
230	1342944	RUBBER CAP	276	1347265	BEVEL SCALE
231	1348273	INT RET RING	277	1347227	BLADE INSERT
232	1346319	BODY	278	901-02-010-0561	#10-32 X 3/8" ROUND HD SCR
233	1346338	SPRING	279	901-02-050-0723	#08-32 X 1/2" FILL HD SCR
234	1346318	LEVER	280	904-01-010-1602	3/16" FLAT WASHER
235	1348273	INT RET RING	281	1347253	MITER POINTER
236	1346313	SHAFT	282	1347272	STRAP
237	1347297	KNOB	283	904-02-010-1726	LOCK WASHER
239	904-01-031-7709	1/4" FLAT WASHER	284	901-05-163-1126	#08-32 X 5/16" PAN HD SCR
240	902-01-120-1034	1/4-20 HEX NUT	285	1347255	BAR ASSY
241	1347228	FOOT	286	901-05-743-1218	#08-32 X 1/2" FLAT HD SCR
242	1347262	RUBBER FOOT	287	1347299	HANDLE
243	901-02-010-0504	1/4-20 X 3/4" ROUND HD SCR	288	1347236	PIVOT STUD
244	904-02-020-1702	1/4" LOCK WASHER	289	901-11-020-0819	1/4-20 X 1 1/4" CARRIAGE HD SCR

* NOT SHOWN ASSEMBLED

STANDARD SAFETY EQUIPMENT

In order to promote tool safety, Delta International Machinery Corp. strictly enforces the policy of repairing or replacing any damaged or missing standard safety equipment on machines presented to Delta Authorized Service Centers for service/repair. Any product which is presented to a Delta Authorized Service Center for repairs which contains missing or damaged standard safety equipment will have that equipment repaired or replaced and the customer will be charged for any such service/repairs. Customers can avoid such charges only if the missing safety component is supplied to the service center at the time of repair.

This parts list is provided to aid in obtaining service parts. Copies of the instruction and maintenance literature can be obtained through the Delta Technical Publications Department or through your local service outlet.