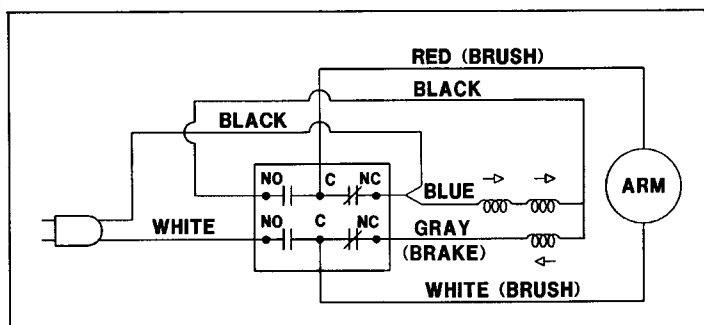
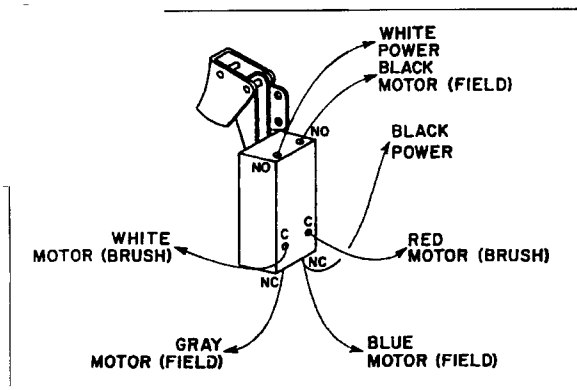
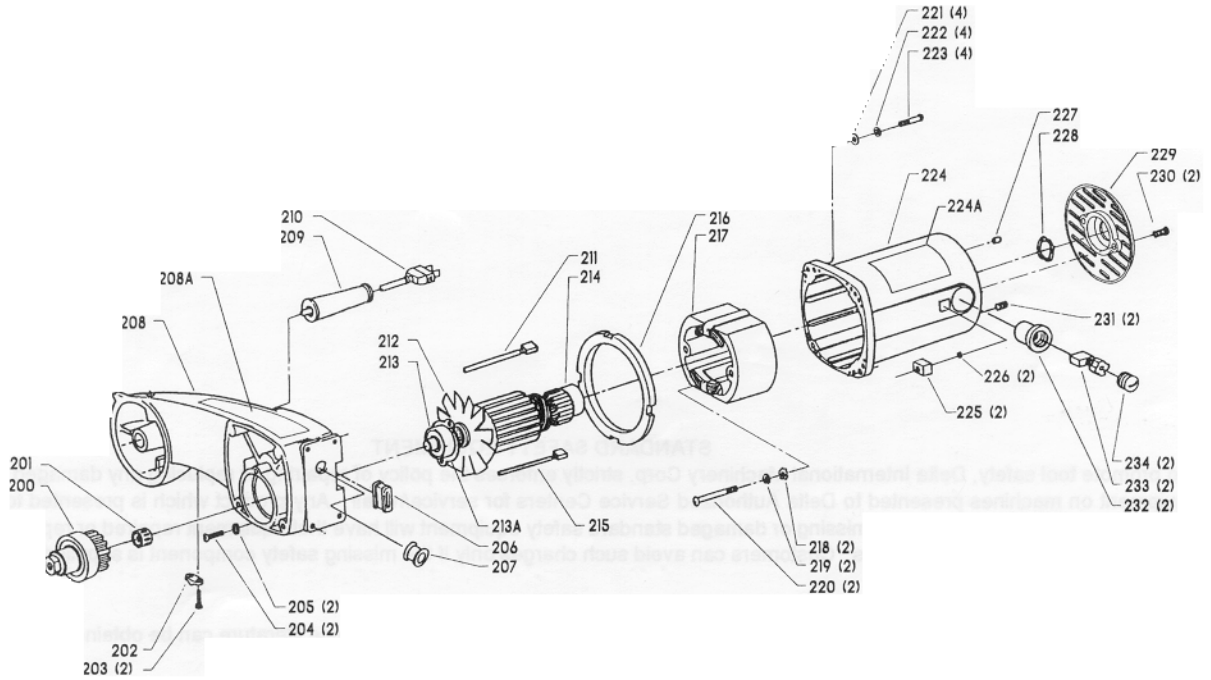
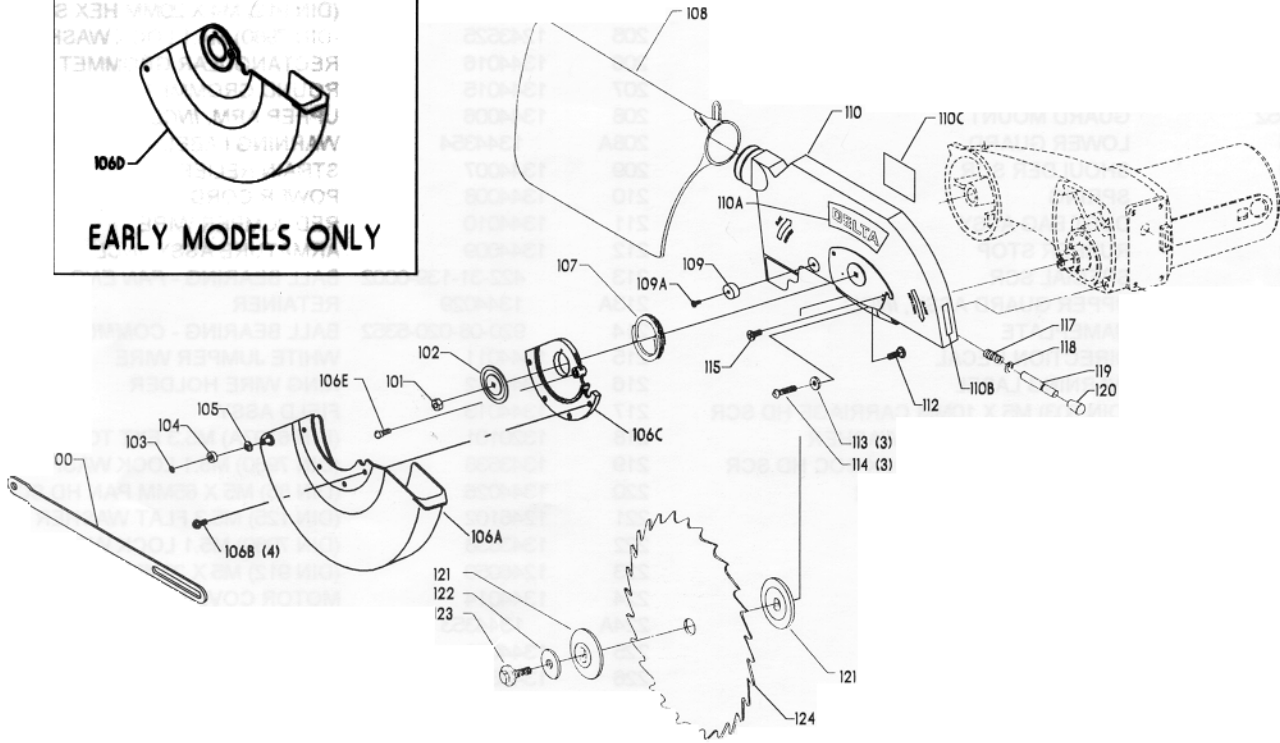
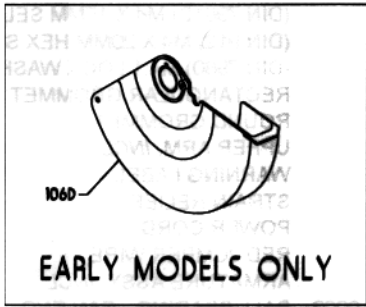


# REPLACEMENT PARTS

REF. NO.	PART NUMBER	DESCRIPTION	REF. NO.	PART NUMBER	DESCRIPTION
1	1346930	HANDLE SET	34	904-01-031-5651	5/8" FLAT WASHER
2	1243570	(DIN 84) M4 X 30MM CHEESE HD SCR	35	1313165	(DIN 985) M16 LOCK NUT
3	1343976	SWITCH	36	1246052	(DIN 912) M10 X 35MM HEX SOC HD SCR
4	1310547	(DIN 7981B) M4.2 X 12MM PAN HD SCR	37	1243360	(DIN 7980) M10.2 LOCK WASHER
5	1343978	SPRING	38	1344035	(DIN 433) M10.5 FLAT WASHER
6	1343977	SWITCH LOCK	39	1243395	(DIN 934) M5 HEX NUT
9	1243569	(DIN 934) M4 HEX NUT	40	1344042	(DIN 913) M5 X 20MM HEX SOC SET SCR
10	1246047	(DIN 84) M5 X 16MM CHEESE HD SCR	45	1246018	(DIN 933) M10 X 25MM HEX HD SCR
11	1343538	(DIN 7980) M5.1 LOCK WASHER	46	1344035	(DIN 433) M10.5 FLAT WASHER
12	1246102	(DIN 125) M5.3 FLAT WASHER	47	1344039	FENCE
13	1343974	LOCK BUTTON	48	1246043	(DIN 913) M5 X 10MM HEX SOC SET SCR
14	1344034	PIVOT BOLT	49	1330398	(DIN 963) M4 X 12MM FLAT HD SCR
15	1243496	(DIN 934) M10 HEX NUT	50	1343982	TABLE INSERT
16	1343971	STOP SCR	51	1343958	TABLE DISC
17	1343970	BUMPER	52	1344038	BASE, INCL:
18	1310006	M5 X 20MM ROUND HD SCR	53	1310016	(DIN 1476) 5MM DRIVE SCR
19	1343968	SPRING	54	1343956	MITER SCALE
*	1345398	PIVOT JOINT ASSY, CONST OF:	55	1340490	(DIN 84) M4 X 8MM CHEESE HD SCR
20	1349913	PIVOT JOINT	56	904-02-010-1726	3/16" LOCK WASHER
20A	1344040	BOLT	57	904-01-010-1602	3/16" FLAT WASHER
21	1344044	HANDLE	58	1343955	POINTER
21A	1310311	(DIN 1481) M4 X 22MM SPRING PIN	59	1343954	SPRING INDEX
21B	1344043	7/16" FLAT WASHER	60	1343953	CLAMP PLATE
21C	1343275	(DIN 137A) M10.5 WAVE WASHER	61	1343952	ARM
22	1345400	PIVOT SUPPORT, INCL:	62	1343951	HANDLE
22A	1310016	(DIN 1476) 5MM DRIVE SCR	63	904-01-010-1604	5/16" FLAT WASHER
22B	1343964	BEVEL SCALE	64	904-02-010-1703	5/16" LOCK WASHER
23	901-02-443-1708	1/4-20 X 1/2" PAN HD SCR	65	901-01-060-0649	5/16-18 X 1" HEX HD SCR
23A	904-03-030-1757	1/4" EXT TOOTH WASHER	70	422-25-101-0002	WRENCH
26	1349915	HINGE PLATE	90	1344021	STOP BLOCK ASSY, INCL:
27	1343642	(DIN 985) M6 LOCK NUT	91	901-04-260-1539	1/4-20 X 3/4" THUMB SCR
28	1341869	SHOULDER SCR	92	1344022	EXTENSION ASSY (ONE SIDE), INCL:
29	1313150	LATCH	93	1344023	RETAINER
30	1313193	SCR	94	901-02-010-0503	1/4-20 X 5/8" ROUND HD SCR
31	1340490	(DIN 84) M4 X 8MM CHEESE HD SCR	95	36-221	CLAMP ASSY, INCL:
32	1344041	POINTER	96	1310162	(DIN 85) M5 X 12MM PAN HD SCR
33	1343965	STOP	97	904-01-010-1619	3/16" FLAT WASHER

\* NOT SHOWN ASSEMBLED





# REPLACEMENT PARTS

<u>REF. NO.</u>	<u>PART NUMBER</u>	<u>DESCRIPTION</u>	<u>REF. NO.</u>	<u>PART NUMBER</u>	<u>DESCRIPTION</u>
100	1349972	LINK	*	1344028	COMPLETE MOTOR ASSY, CONST
101	1343504	(DIN 985) M5 LOCK NUT	200	1344004	JACKSHAFT ASSY
102	1342996	PLATE	201	1344003	NEEDLE BEARING
103	1347287	M5 PUSH NUT	202	1344005	CORD CLAMP
104	1347286	WHEEL	203	1343526	(DIN 7981B) M4 X 15MM SELF TAP SCR
105	1347285	BUSHING	204	1341440	(DIN 912) M4 X 20MM HEX SOC HD SCR
*	1344550	BLADE GUARD ASSY, CONST OF:	205	1243525	(DIN 7980) M4.1 LOCK WASHER
106A	1344551	LOWER GUARD	206	1344016	RECTANGULAR GROMMET
106B	1344553	M5 X 8MM TRUSS HD SCR	207	1344015	ROUND GROMMET
106C	1344552	GUARD MOUNT	208	1344006	UPPER ARM, INCL:
106D	1349485	LOWER GUARD	208A	1344354	WARNING LABEL
106E	1341869	SHOULDER SCR	209	1344007	STRAIN RELIEF
107	1343990	SPRING	210	1344008	POWER CORD
108	36-222	DUST BAG ASSY	211	1344010	RED JUMPER WIRE
109	1343992	RUBBER STOP	212	1344009	ARMATURE ASSY, INCL:
109A	1343991	SPECIAL SCR	213	422-31-139-0002	BALL BEARING - FAN END
110	1349957	UPPER GUARD ASSY, INCL:	213A	1344029	RETAINER
110A	1344352	NAMEPLATE	214	920-08-020-5352	BALL BEARING - COMMUTATOR END
110B	1348255	DIRECTION DECAL	215	1344011	WHITE JUMPER WIRE
110C	1344355	WARNING LABEL	216	1344012	RING WIRE HOLDER
112	1343054	(DIN 603) M5 X 10MM CARRIAGE HD SCR	217	1344013	FIELD ASSY
113	1343538	(DIN 7980) M5.1 LOCK WASHER	218	1320101	(DIN 6797A) M5.3 EXT TOOTH WASHER
114	1246098	(DIN 912) M5 X 16MM HEX SOC HD SCR	219	1343538	(DIN 7980) M5.1 LOCK WASHER
115	1344117	#10-32 X 3/8" FLAT HD SCR	220	1344026	(DIN 85) M5 X 65MM PAN HD SCR
117	1343997	SPRING	221	1246102	(DIN 125) M5.3 FLAT WASHER
118	1344032	EXT RET RING	222	1343538	(DIN 7980) M5.1 LOCK WASHER
119	1343996	ARBOR LOCK	223	1246050	(DIN 912) M5 X 25MM HEX SOC HD SCR
120	1344033	RUBBER CAP	224	1344014	MOTOR COVER ASSY, INCL:
121	1343985	BLADE FLANGE	224A	1344353	NAMEPLATE
122	1343984	BLADE WASHER	225	1344020	NUT HOLDER
123	1343983	BLADE BOLT	226	1343504	(DIN 985) M5 LOCK NUT
124	OPTIONAL	BLADE (SEE NOTE A)	227	1313207	RUBBER PLUG
			228	1313118	WAVE WASHER
			229	1344046	MOTOR COVER
			230	1310070	M5 X 15MM SELF TAP SCR
			231	1246008	(DIN 916) M5 X 12MM HEX SOC SET SCR
			232	1344018	BRUSH HOLDER
			233	1344019	BRUSH
			234	1313114	BRUSH CAP

\* NOT SHOWN ASSEMBLED

### NOTE A:

USE CROSS CUT BLADES ONLY! DO NOT USE BLADES DESIGNED FOR RIPPING, COMBINATION BLADES OR BLADES WITH HOOK ANGLES IN EXCESS OF 5 DEGREES.

### STANDARD SAFETY EQUIPMENT

In order to promote tool safety, Delta International Machinery Corp. strictly enforces the policy of repairing or replacing any damaged or missing standard safety equipment on machines presented to Delta Authorized Service Centers for service/repair. Any product which is presented to a Delta Authorized Service Center for repairs which contains missing or damaged standard safety equipment will have that equipment repaired or replaced and the customer will be charged for any such service/repairs. Customers can avoid such charges only if the missing safety component is supplied to the service center at the time of repair.

This parts list is provided to aid in obtaining service parts. Copies of the instruction and maintenance literature can be obtained through the Delta Technical Publications Department or through your local service outlet.