

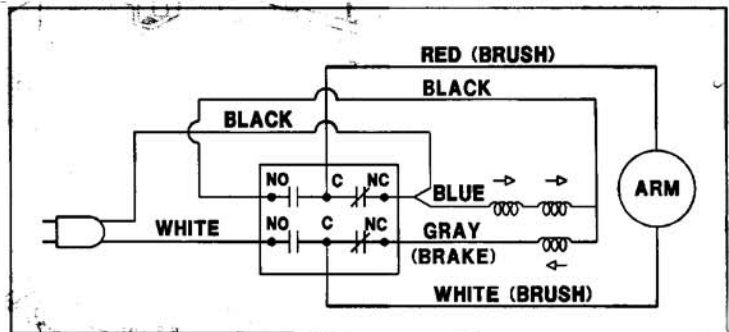
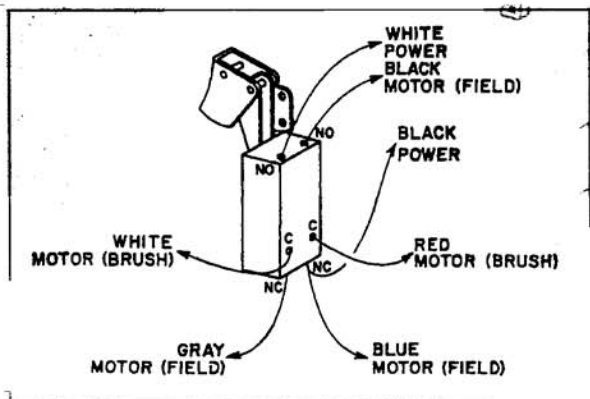
REPLACEMENT PARTS

REF NO.	PART NUMBER	DESCRIPTION	REF NO.	PART NUMBER	DESCRIPTION
1	1346930	HANDLE SET	36	1246052	(DIN 912) M10 X 35MM HEX SOC HD SC
2	1243570	(DIN 84) M4 X 30MM CHEESE HD SCREW	37	1243360	(DIN 7980) M10.2 LOCK WASHER
3	1343976	SWITCH	38	1344035	(DIN 433) M10.5 FLAT WASHER
4	1310547	(DIN 7981B) M4.2 X 12MM PAN HD SCR	39	1243395	(DIN 934) M5 HEX NUT
5	1343978	SPRING	40	1344042	(DIN 913) M5 X 20MM HEX SOC SET SCR
6	1343977	SWITCH LOCK	45	1246018	(DIN 933) M10 X 25MM HEX HD SCREW
9	1243569	(DIN 934) M4 HEX NUT	46	1344035	(DIN 433) M10.5 FLAT WASHER
10	1246047	(DIN 84) M5 X 16MM CHEESE HD SCREW	47	1344039	FENCE
11	1343538	(DIN 7980) M5.1 LOCK WASHER	48	1246043	(DIN 913) M5 X 10MM HEX SOC SET SCR
12	1246102	(DIN 125) M5.3 FLAT WASHER	49	1330398	(DIN 963) M4 X 12MM FLAT HD SCREW
13	1343974	LOCK BUTTON	50	1343982	TABLE INSERT
14	1344034	PIVOT BOLT	51	1343958	TABLE DISC
15	1243496	(DIN 934) M10 HEX NUT	52	1344038	BASE
16	1343971	STOP SCREW	53	1310016	(DIN 1476) 5MM DRIVE SCREW
17	1343970	BUMPER	54	1343956	MITER SCALE
18	1310006	M5 X 20MM ROUND HD SCREW	55	1340490	(DIN 84) M4 X 8MM CHEESE HD SCREW
19	1343968	SPRING	56	904-02-010-1726	3/16" LOCK WASHER
*	1345398	PIVOT JOINT ASSY, CONST OF:	57	904-01-010-1602	3/16" FLAT WASHER
20	1344047	(DIN 1481) M2.5 X 20MM SPRING PIN	58	1343955	POINTER
21	1344044	HANDLE	59	1343954	SPRING INDEX
21A	1310311	(DIN 1481) M4 X 22MM SPRING PIN	60	1343953	CLAMP PLATE
22	1344043	7/16" FLAT WASHER	61	1343952	ARM
23	1343275	(DIN 137A) M10.5 WAVE WASHER	62	1343951	HANDLE
24	1345399	PIVOT JOINT (CMO, SEE NOTE A)	63	904-01-010-1604	5/16" FLAT WASHER
24A	1344048	PIVOT JOINT (EMO, SEE NOTE A)	64	904-02-010-1703	5/16" LOCK WASHER
25	1344040	BOLT	65	901-01-060-0649	5/16-18 X 1" HEX HD SCREW
26	1345400	PIVOT SUPPORT (CMO, SEE NOTE A)	70	422-25-101-0002	WRENCH
26A	1344049	PIVOT SUPPORT (EMO, SEE NOTE A)	90	1344021	STOP BLOCK ASSY, INCL:
27	1310016	(DIN 1476) 5MM DRIVE SCREW	91	901-04-260-1505	1/4-20 X 1/2" THUMB SCREW
28	1343964	BEVEL SCALE	92	1344022	EXTENSION ASSY (ONE SIDE), INCL:
29	1313150	LATCH	93	1344023	RETAINER
30	1313193	SCREW	94	901-02-010-0503	1/4-20 X 5/8" ROUND HD SCREW
31	1340490	(DIN 84) M4 X 8MM CHEESE HD SCREW	95	36-221	CLAMP ASSY, INCL:
32	1344041	POINTER	96	1310162	(DIN 85) M5 X 12MM PAN HD SCREW
33	1343965	STOP	97	904-01-010-1619	3/16" FLAT WASHER
34	904-01-031-5651	5/8" FLAT WASHER			
35	1313165	(DIN 985) M16 LOCK NUT			

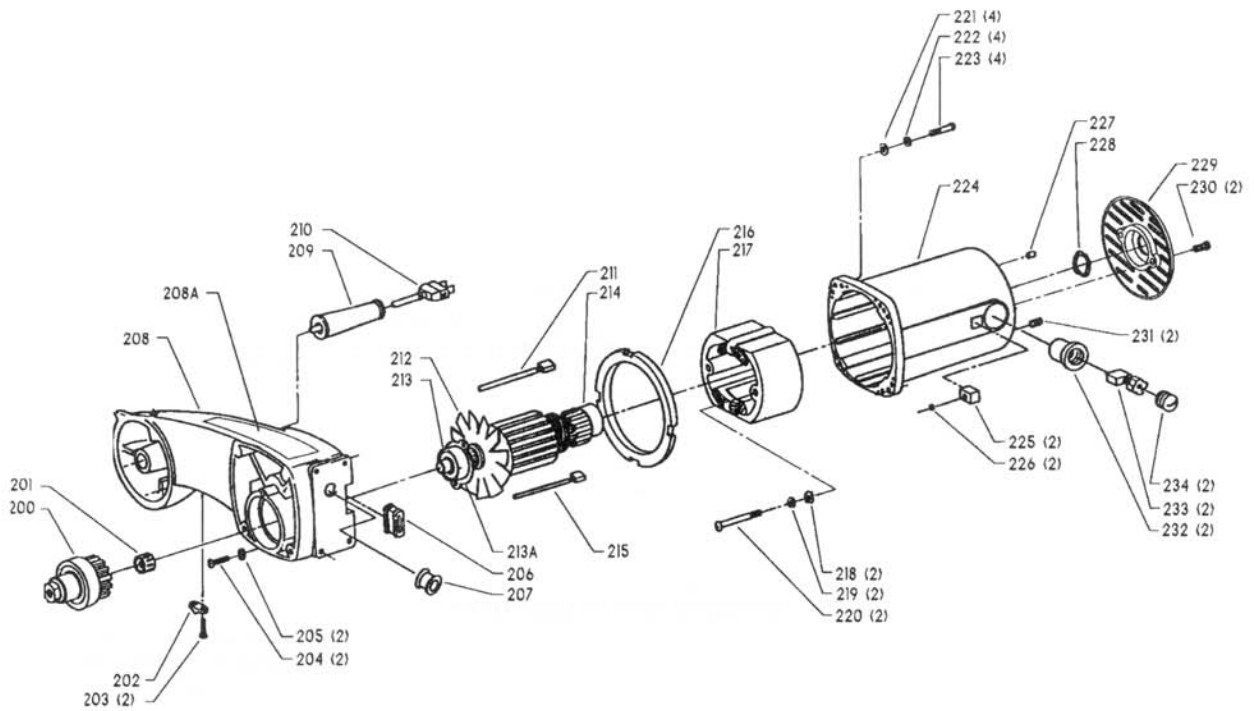
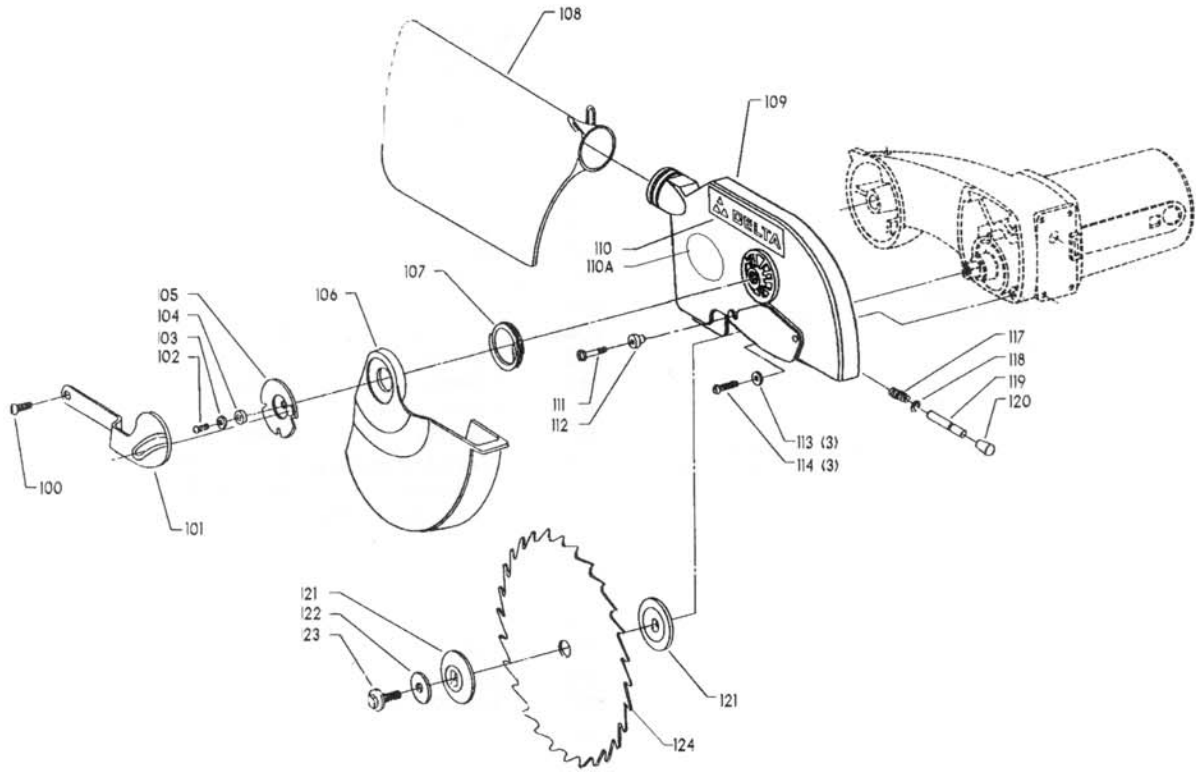
* NOT SHOWN ASSEMBLED

NOTE A:

EARLY MODEL PARTS WERE CAST IRON. CURRENT MODEL PARTS ARE ALUMINUM. WHEN REPLACING EARLY CAST IRON PARTS, USE THE COMPLETE CURRENT ALUMINUM ASSEMBLY, PART NUMBER 1345398.



REPLACEMENT PARTS



REPLACEMENT PARTS

<u>REF NO.</u>	<u>PART NUMBER</u>	<u>DESCRIPTION</u>	<u>REF NO.</u>	<u>PART NUMBER</u>	<u>DESCRIPTION</u>
100	1344030	SHOULDER SCREW	200	1344004	JACKSHAFT ASSY
101	1343987	LINK	201	1344003	NEEDLE BEARING
102	1310162	(DIN 85) M5 X 12MM PAN HD SCREW	202	1344005	CORD CLAMP
103	1246102	(DIN 125) M5.3 FLAT WASHER	203	1343526	(DIN 7981B) M4 X 15MM SELF TAP SCR
104	1344031	SPACER	204	1341440	(DIN 912) M4 X 20MM HEX SOC HD SCR
105	1343988	COVER ASSY	205	1243525	(DIN 7980) M4.1 LOCK WASHER
106	1343989	LOWER GUARD	206	1344016	RECTANGULAR GROMMET
107	1343990	SPRING	207	1344015	ROUND GROMMET
108	36-222	DUST BAG ASSY	208	1344006	UPPER ARM, INCL:
109	1344045	UPPER GUARD ASSY, INCL:	208A	1343972	WARNING LABEL
110	1343980	NAMEPLATE	209	1344007	STRAIN RELIEF
110A	1344025	WARNING LABEL	210	1344008	POWER CORD
111	1343991	SPECIAL SCREW	211	1344010	RED JUMPER WIRE
112	1343992	RUBBER STOP	212	1344009	ARMATURE ASSY
113	1343538	(DIN 7980) M5.1 LOCK WASHER	213	422-31-139-0002	BALL BEARING - FAN END
114	1246098	(DIN 912) M5 X 16MM HEX SOC HD SCR	213A	1344029	RETAINER
117	1343997	SPRING	214	920-08-020-5352	BALL BEARING - COMMUTATOR END
118	1344032	EXT RET RING	215	1344011	WHITE JUMPER WIRE
119	1343996	ARBOR LOCK	216	1344012	RING WIRE HOLDER
120	1344033	RUBBER CAP	217	1344013	FIELD ASSY
121	1343985	BLADE FLANGE	218	1320101	(DIN 6797A) M5.3 EXT TOOTH WASHER
122	1343984	BLADE WASHER	219	1343538	(DIN 7980) M5.1 LOCK WASHER
123	1343983	BLADE BOLT	220	1344026	(DIN 85) M5 X 65MM PAN HD SCREW
124	OPTIONAL	BLADE (SEE NOTE B)	221	1246102	(DIN 125) M5.3 FLAT WASHER
			222	1343538	(DIN 7980) M5.1 LOCK WASHER
			223	1246050	(DIN 912) M5 X 25MM HEX SOC HD SCR
			224	1344014	MOTOR COVER ASSY
			225	1344020	NUT HOLDER
			226	1243395	(DIN 934) M5 HEX NUT
			227	1313207	RUBBER PLUG
			228	1313118	WAVE WASHER
			229	1344046	MOTOR COVER
			230	1310070	M5 X 15MM SELF TAP SCREW
			231	1246008	(DIN 916) M5 X 12MM HEX SOC SET SCR
			232	1344018	BRUSH HOLDER
			233	1344019	BRUSH
			234	1313114	BRUSH CAP

NOT SHOWN ASSEMBLED

NOTE B:

USE CROSS CUT BLADES ONLY! DO NOT USE BLADES DESIGNED FOR RIPPING, COMBINATION BLADES OR BLADES WITH HOOK ANGLES IN EXCESS OF 5 DEGREES.

STANDARD SAFETY EQUIPMENT

In order to promote tool safety, Delta International Machinery Corp. strictly enforces the policy of repairing or replacing any damaged or missing standard safety equipment on machines presented to Delta Authorized Service Centers for service/repair. Any product which is presented to a Delta Authorized Service Center for repairs which contains missing or damaged standard safety equipment will have that equipment repaired or replaced and the customer will be charged for any such service/repairs. Customers can avoid such charges only if the missing safety component is supplied to the service center at the time of repair.

This parts list is provided to aid in obtaining service parts. Copies of the instruction and maintenance literature can be obtained through the Delta Technical Publications Department or through your local service outlet.