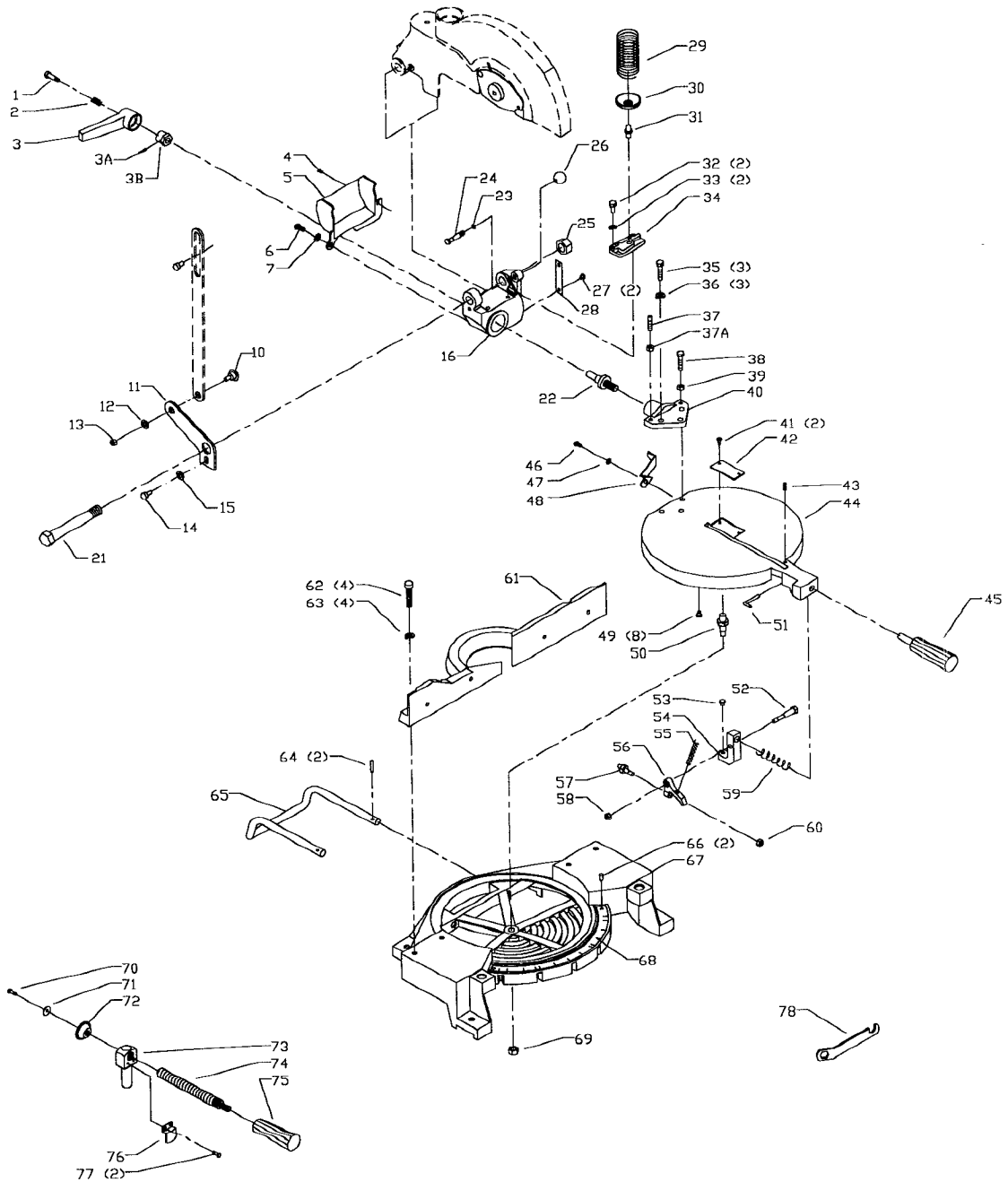


**36-210
SIDEKICK 10" MOTORIZED
COMPOUND MITER SAW
FOR SERIAL # K9611 AND HIGHER**

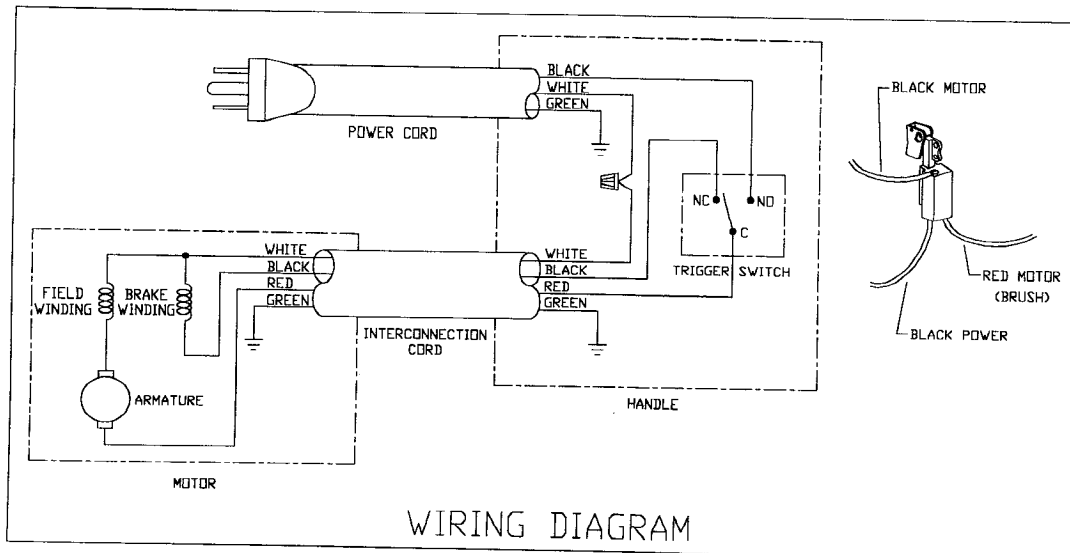
MB-4B-1
Part No. 1349949
Revised: 2/24/99

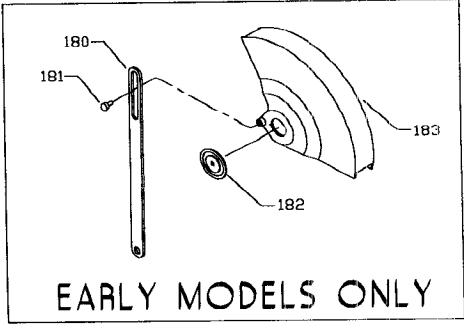
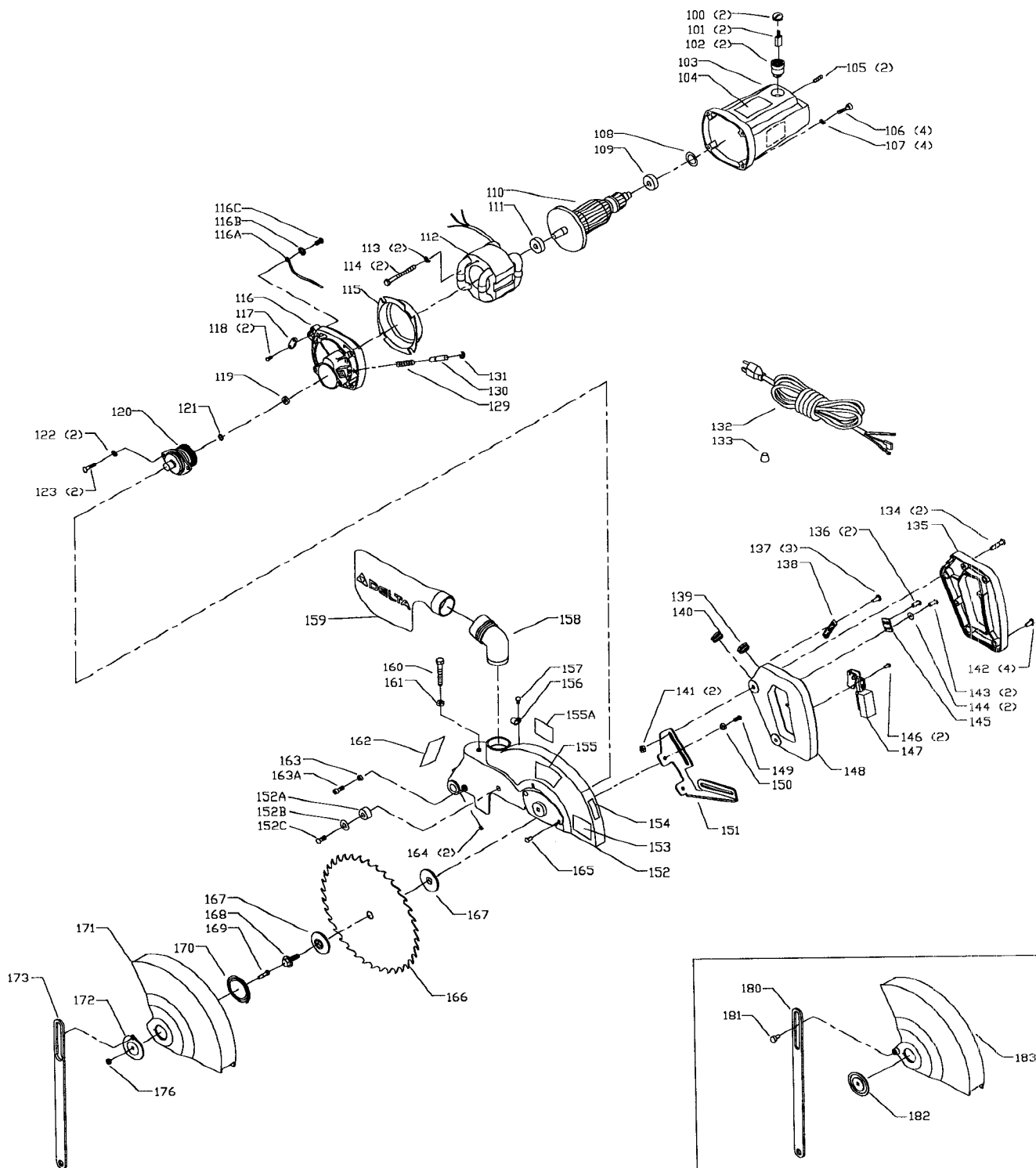


REPLACEMENT PARTS

REF. NO.	PART NUMBER	DESCRIPTION	REF. NO.	PART NUMBER	DESCRIPTION
1	1345531	SCR	42	1345466	INSERT
2	1345532	SPRING	43	1243581	(DIN 914) M4 X 6MM HEX SOC SET SCR
3	1345481	HANDLE	44	1345451	TABLE
3A	1310310	(DIN 1481) M3 X 18MM SPRING PIN	45	1343012	HANDLE
3B	1345480	NUT	46	1246045	(DIN 84) M6 X 10MM CHEESE HD SCR
*	1349950	GUARD LINKAGE KIT, CONST OF:	47	904-01-010-1602	3/16" FLAT WASHER
4	1246000	(DIN 84) M3 X 6MM CHEESE HD SCR	48	1345467	POINTER
5	1349493	PINCH GUARD	49	1343008	NYLON INSERT
6	1246045	(DIN 84) M6 X 10MM CHEESE HD SCR	50	1342973	PIVOT STUD
7	1340622	M6.4 FLAT WASHER	51	1345468	POINTER
10	1349953	SPECIAL SCR	52	1342991	CLAMP SHAFT
11	1349489	GUARD LINK PLATE	53	1346910	NYLON PAD
12	1340622	M6.4 FLAT WASHER	54	1342990	CLAMP
13	1343504	(DIN 985) M5 LOCK NUT	55	1343009	SPRING
14	1349954	(DIN 7380) M5 X 12MM BUTTON HD SCR	56	1342995	INDEX TRIGGER
15	1246102	(DIN 125) M5.3 FLAT WASHER	57	1342992	INDEX PIN
16	1345454	TRUNNION	58	1343642	(DIN 985) M6 LOCK NUT
21	1345461	SHAFT	59	1343013	SPRING
22	1345479	STUD	60	1343642	(DIN 985) M6 LOCK NUT
23	1345534	O-RING	61	1345455	FENCE
24	1345533	PIN	62	1330147	(DIN 912) M8 X 40MM HEX SOC HD SCR
25	1313165	(DIN 985) M16 LOCK NUT	63	1246157	(DIN 7980) M8.1 LOCK WASHER
26	1345535	KNOB	64	1330410	(DIN 1481) M5 X 20MM SPRING PIN
27	1310016	(DIN 1476) 5MM DRIVE SCR	65	1342981	STABILIZER BAR
28	1345482	SCALE	66	1310016	(DIN 1476) 5MM DRIVE SCR
29	1345463	RETURN SPRING	67	1342962	BASE
30	1345462	CUP	68	1343000	SCALE
31	1345465	PIN	69	1341996	(DIN 985) M10 LOCK NUT
32	1246004	(DIN 912) M6 X 16MM HEX SOC HD SCR	*	36-221	CLAMP ASSY, CONST OF:
33	1243520	(DIN 7980) M6.1 LOCK WASHER	70	901-02-010-0561	#10-32 X 3/8" ROUND HD SCR
34	1345464	BRACKET	71	1340608	M6.4 FLAT WASHER
35	1246053	(DIN 912) M8 X 25MM HEX SOC HD SCR	72	1345550	CLAMP CUP
36	1246157	(DIN 7980) M8.1 LOCK WASHER	73	1345549	SUPPORT
37	1246127	(DIN 916) M6 X 30MM HEX SOC SET SCR	74	1345547	SHAFT
37A	1243456	(DIN 934) M6 HEX NUT	75	1345546	KNOB
38	1246175	(DIN 931) M6 X 30MM HEX HD SCR	76	1345548	RETAINER
39	1243456	(DIN 934) M6 HEX NUT	77	901-02-010-0561	#10-32 X 3/8" ROUND HD SCR
40	1345453	BRACKET	78	1342906	1/2" BLADE WRENCH
41	1246117	(DIN 963) M4 X 10MM FLAT HD SCR			

* NOT SHOWN ASSEMBLED





EARLY MODELS ONLY

REPLACEMENT PARTS

REF. NO.	PART NUMBER	DESCRIPTION	REF. NO.	PART NUMBER	DESCRIPTION
*	1345457	MOTOR ASSY, <i>INCL.</i> :	140	1343018	1/2" GROMMET
100	1345542	BRUSH CAP	141	1343058	(DIN 6920) M6 FLANGE NUT
101	1345541	BRUSH	142	1343051	(DIN 7981B) M4.2 X 20MM PAN HD SCR
102	1345540	BRUSH HOLDER	143	1310143	(DIN 85) M5 X 8MM PAN HD SCR
103	1345470	HOUSING, <i>INCL.</i> :	144	1320101	(DIN 6797A) M5.3 EXT TOOTH WASHER
104	1344362	NAMEPLATE	145	1343021	GROUND LUG
105	1246008	(DIN 916) M5 X 12MM HEX SOC SET SCR	146	1343526	(DIN 7981B) M4 X 15MM SELF TAP SCR
106	1246091	(DIN 84) M6 X 50MM CHEESE HD SCR	147	1345405	SWITCH
107	1243520	(DIN 7980) M6.1 LOCK WASHER	148	1343016	HANDLE (<i>LH</i>)
108	1343267	WAVE WASHER	149	1246067	(DIN 84) M6 X 15MM CHEESE HD SCR
109	920-08-020-5352	BALL BEARING	150	1243520	(DIN 7980) M6.1 LOCK WASHER
110	1345539	ARMATURE	151	1343022	MOUNTING STRAP
111	400-08-139-0008	BALL BEARING	152	1345452	UPPER GUARD ASSY, <i>INCL.</i> :
112	1345538	FIELD	152A	1349870	BUMPER
113	1320101	(DIN 6797A) M5.3 EXT TOOTH WASHER	152B	1320086	FLAT WASHER
114	1341770	(DIN 85) M5 X 72MM PAN HD SCR	152C	1348696	(DIN 7360) M5 X 18MM BUTTON HD SCR
115	1345477	RETAINER	153	1344363	WARNING LABEL
116	1345471	HOUSING	154	1342953	DIRECTION DECAL
116A	1349871	GROUND WIRE	155	1344361	NAMEPLATE
116B	1320102	(DIN 6797A) M4.3 EXT TOOTH WASHER	155A	1344364	WARNING LABEL
116C	1243501	(DIN 84) M4 X 10MM CHEESE HD SCR	156	1343050	1/2" CABLE CLAMP
117	1345695	CORD CLAMP	157	1243394	(DIN 84) M5 X 10MM CHEESE HD SCR
118	1343526	(DIN 7981B) M4 X 15MM SELF TAP SCR	158	1345483	SPOUT
119	1344003	NEEDLE BEARING	159	34-084	DUST BAG
120	1345484	JACKSHAFT ASSY, <i>INCL.</i> :	160	1345536	SPECIAL SCR
121	1341016	EXT RET RING	161	1243398	(DIN 934) M8 HEX NUT
122	1243520	(DIN 7980) M6.1 LOCK WASHER	162	1349516	LABEL
123	1341104	(DIN 84) M6 X 20MM CHEESE HD SCR	163	1243456	(DIN 934) M6 HEX NUT
129	1342987	SPRING	163A	1246004	(DIN 912) M6 X 16MM HEX SOC HD SCR
130	1345478	PIN	164	1246008	(DIN 916) M5 X 12MM HEX SOC SET SCP
131	1330258	EXT RET RING	165	1345431	SPECIAL SCR
132	1345544	POWER CORD	166	<i>OPTIONAL</i>	BLADE (<i>SEE NOTE A</i>)
133	438-01-007-0042	WIRE NUT	167	1342975	OUTER FLANGE
134	1330011	(DIN 84) M6 X 40MM CHEESE HD SCR	168	1342989	ARBOR BOLT
135	1343017	HANDLE (<i>RH</i>)	169	1343054	M5 X 10MM CARRIAGE HD SCR
136	1343526	(DIN 7981B) M4 X 15MM SELF TAP SCR	170	1342998	SPRING
137	1343526	(DIN 7981B) M4 X 15MM SELF TAP SCR	*	1345435	BLADE GUARD ASSY, <i>CONST OF.</i> :
138	1343020	CORD STRAP	171	1345432	LOWER BLADE GUARD
139	1343019	3/8" GROMMET	172	1345433	PLATE
			173	1345418	LINK
			176	1343504	(DIN 985) M5 LOCK NUT
			180	1349490	LINK (<i>SEE NOTE B</i>)
			181	1349953	SPECIAL SCR
			182	1342996	PLATE (<i>SEE NOTE B</i>)
			183	1345480	LOWER BLADE GUARD (<i>SEE NOTE B</i>)

NOTE A: USE CROSS CUT BLADES ONLY! DO NOT USE BLADES DESIGNED FOR RIPPING, COMBINATION BLADES OR BLADES WITH EXCESSIVE HOOK ANGLES.

* NOT SHOWN ASSEMBLED

NOTE B: WHEN REPLACING *LINK* (REF. NO. 180), *PLATE* (REF. NO. 182) AND / OR *LOWER BLADE GUARD* (REF. NO. 183), ORDER SERVICE ASSY P/N 1345435 *BLADE GUARD ASSY*, WHICH INCLUDES THE NEW STYLE *LINK*, *PLATE*, AND *LOWER BLADE GUARD*.

STANDARD SAFETY EQUIPMENT

In order to promote tool safety, Delta International Machinery Corp. strictly enforces the policy of repairing or replacing any damaged or missing standard safety equipment on machines presented to Delta Authorized Service Centers for service/repair. Any product which is presented to a Delta Authorized Service Center for repairs which contains missing or damaged standard safety equipment will have that equipment repaired or replaced and the customer will be charged for any such service/repairs. Customers can avoid such charges only if the missing safety component is supplied to the service center at the time of repair.

This parts list is provided to aid in obtaining service parts. Copies of the instruction and maintenance literature can be obtained through the Delta Technical Publications Department or through your local service outlet.