

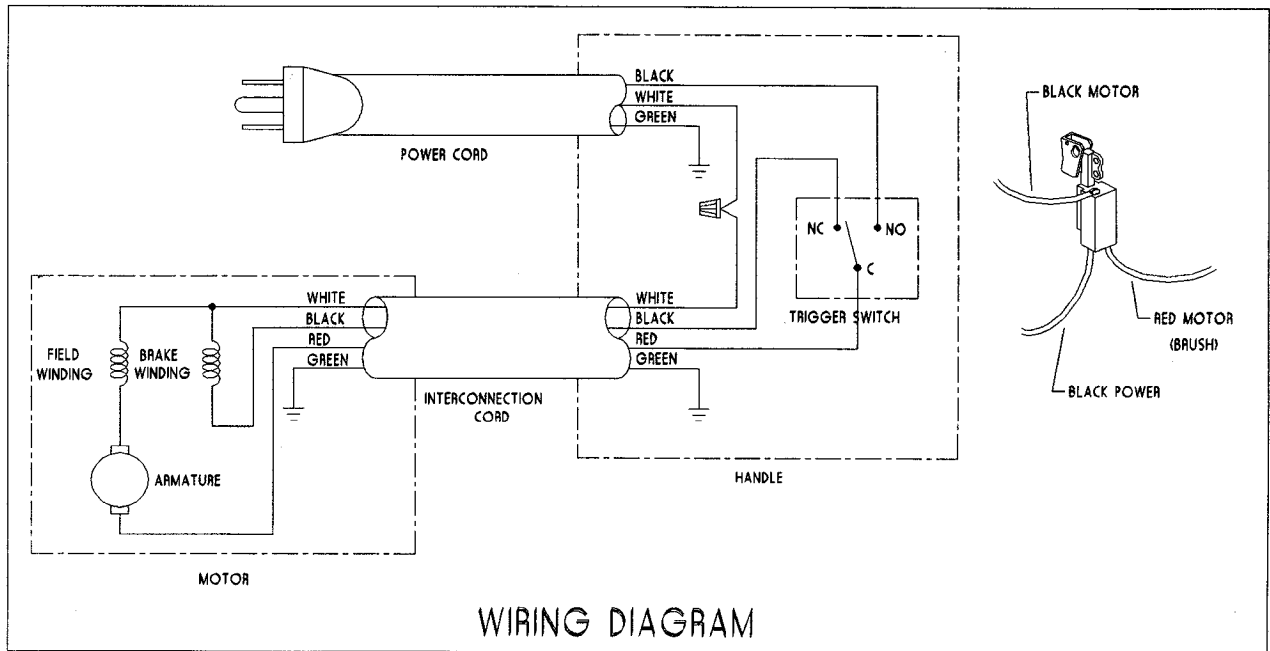
# REPLACEMENT PARTS

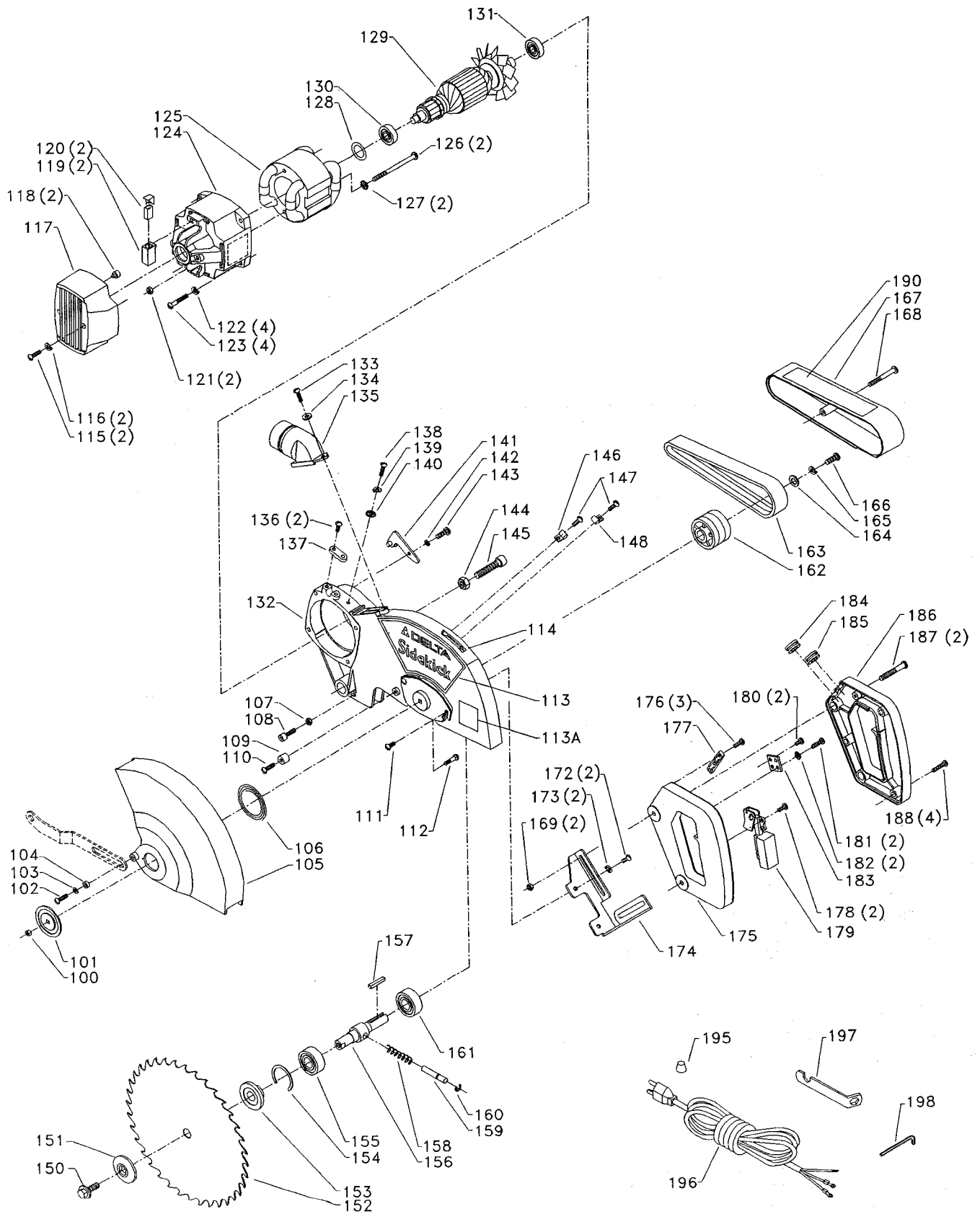
REF. NO.	PART NUMBER	DESCRIPTION	REF. NO.	PART NUMBER	DESCRIPTION
1	1342972	PIVOT PIN	32	1342992	INDEX PIN
2	1342994	BUSHING	33	1243520	(DIN 7980) M6.1 LOCK WASHER
3	1343038	PLATE ASSY	34	1343642	(DIN 985) M6 LOCK NUT
4	1246051	(DIN 912) M5 X 12MM HEX SOC HD SCR	35	1243581	(DIN 914) M4 X 6MM HEX SOC SET SCR
5	1343642	(DIN 985) M6 LOCK NUT	36	1342991	CLAMP SHAFT
6	1243520	(DIN 7980) M6.1 LOCK WASHER	37	1343012	HANDLE
7	1342977	GUARD LINK	38	1346910	NYLON PAD
8	1342982	FLOATING PIN	39	1343013	SPRING
9	1343040	LINK ASSY	40	1342990	CLAMP
10	1343024	SPRING	42	1342973	PIVOT STUD
11	1343642	(DIN 985) M6 LOCK NUT	43	1330147	(DIN 912) M8 X 40MM HEX SOC HD SCR
12	1343027	ARM LATCH	44	1246157	(DIN 7980) M8.1 LOCK WASHER
13	1246067	(DIN 84) M6 X 16MM CHEESE HD SCR	45	1330410	(DIN 1481) M5 X 20MM SPRING PIN
14	1243520	(DIN 7980) M6.1 LOCK WASHER	46	1342981	STABILIZER BAR
15	1343033	ANCHOR ASSY	47	1342965	FENCE
16	1246067	(DIN 84) M6 X 16MM CHEESE HD SCR	48	1342962	BASE
17	1343007	BUMPER	49	1310016	5MM DRIVE SCR
18	1343031	SPRING	50	1343000	SCALE
18A	1343045	STUD	51	1341996	(DIN 985) M10 LOCK NUT
19	1243456	(DIN 934) M6 HEX NUT			
20	1243549	(DIN 916) M6 X 12MM HEX SOC SET SCR			
21	1341235	(DIN 84) M4 X 12MM CHEESE HD SCR			
22	1243525	(DIN 7980) M4.1 LOCK WASHER			
23	1343030	DUST DEFLECTOR			
24	1313165	(DIN 985) M16 LOCK NUT			
25	1243398	(DIN 934) M8 HEX NUT			
26	1243554	(DIN 912) M8 X 35MM HEX SOC HD SCR			
27	1342961	TABLE			
28	1343008	NYLON INSERT			
29	1343001	POINTER			
30	1343009	SPRING			
31	1342995	INDEX TRIGGER			

## AVAILABLE AS AN ACCESSORY

*	36-221	CLAMP ASSY, CONST OF;
90	901-02-010-0561	#10-32 X 3/8" ROUND HD SCR
91	1340608	M6.4 FLAT WASHER
92	1345550	CLAMP CUP
93	1345549	SUPPORT
94	1345547	SHAFT
95	1345546	KNOB
96	1345548	RETAINER
97	901-02-010-0561	#10-32 X 3/8" ROUND HD SCR

\* NOT SHOWN ASSEMBLED





# REPLACEMENT PARTS

REF. NO.	PART NUMBER	DESCRIPTION	REF. NO.	PART NUMBER	DESCRIPTION
100	1343504	(DIN 985) M5 LOCK NUT	145	1243530	(DIN 912) M8 X 30MM HEX SOC I
101	1342996	PLATE	146	1342930	CLAMP
102	1246047	(DIN 84) M5 X 16MM CHEESE HD SCR	147	1243394	(DIN 84) M5 X 10MM CHEESE HD SCR
103	1246102	(DIN 125) M5.3 FLAT WASHER	148	1343050	1/2" CABLE CLAMP
104	1342984	BUSHING	150	1342989	ARBOR BOLT
105	1342967	BLADE GUARD	151	1342975	FLANGE
106	1342998	SPRING	152	OPTIONAL	BLADE (SEE NOTE A)
107	1243456	(DIN 934) M6 HEX NUT	153	1342974	INNER FLANGE
108	1246004	(DIN 912) M6 X 16MM HEX SOC HD SCR	154	1246003	INT RET RING
109	1343014	RUBBER BUMPER	155	1313122	BALL BEARING
110	1246047	(DIN 84) M5 X 16MM CHEESE HD SCR	156	1342970	ARBOR SHAFT
111	1343053	M5 X 10MM PAN HD SCR	157	1343057	KEY
112	1343054	(DIN 603) M5 X 10MM CARRIAGE HD SCR	158	1342987	SPRING
*	1343043	MOTOR ASSY, CONST OF;	159	1342986	LOCK PIN
113	1346973	NAMEPLATE	160	1246064	EXT RET RING
113A	1346964	BLADE WARNING LABEL	161	920-04-010-5355	BALL BEARING
114	1342953	DIRECTION DECAL	162	1342971	ARBOR PULLEY
115	1341235	(DIN 84) M4 X 12MM CHEESE HD SCR	163	36-092	DRIVE BELT
116	1243525	(DIN 7980) M4.1 LOCK WASHER	164	1343052	WASHER
117	1342964	MOTOR CAP	165	1243520	(DIN 7980) M6.1 LOCK WASHER
118	1343271	PAD	166	1246067	(DIN 84) M6 X 16MM CHEESE HD SCR
119	1343270	BRUSH HOUSING	167	1342969	BELT GUARD
120	1342955	BRUSH	168	1310158	(DIN 84) M5 X 45MM CHEESE HD SCR
121	1343504	(DIN 985) M5 LOCK NUT	169	1343058	(DIN 6920) M6 FLANGE NUT
122	1343538	(DIN 7980) M5.1 LOCK WASHER	172	1246067	(DIN 84) M6 X 16MM CHEESE HD SCR
123	1310146	(DIN 40) M5 X 30MM PAN HD SCR	173	1243520	(DIN 7980) M6.1 LOCK WASHER
124	1342963	MOTOR HOUSING	174	1343022	MOUNTING STRAP
125	1343044	FIELD	175	1343016	HANDLE LH
126	1341770	(DIN 85) M5 X 72MM PAN HD SCR	176	1343526	(DIN 7981B) M4.2 X 16MM PAN HD SCR
127	1320101	(DIN 6797A) M5.3 EXT TOOTH WASHER	177	1343020	CORD STRAP
128	1343267	WAVE WASHER	178	1343526	(DIN 7981B) M4.2 X 16MM PAN HD
129	1343042	ARMATURE	179	1345405	SWITCH
130	920-08-020-5352	BALL BEARING	180	1343526	(DIN 7981B) M4.2 X 16MM PAN HD SCR
131	920-04-010-5355	BALL BEARING	181	1310143	(DIN 85) M5 X 8MM PAN HD SCR
132	1342960	ARM ASSY	182	1320101	(DIN 6797A) M5.3 EXT TOOTH WASHER
133	1246047	(DIN 84) M5 X 16MM CHEESE HD SCR	183	1343021	GROUND LUG
134	1246102	(DIN 125) M5.3 FLAT WASHER	184	1343018	1/2" GROMMET
135	1343023	DUST CHUTE	185	1343019	3/8" GROMMET
136	1341235	(DIN 84) M4 X 12MM CHEESE HD SCR	186	1343017	HANDLE RH
137	1343036	RETAINER	187	1330011	(DIN 84) M6 X 40MM CHEESE HD SCR
138	1310143	(DIN 85) M5 X 8MM PAN HD SCR	188	1343051	(DIN 7981B) M4.2 X 20MM PAN HD SCR
139	1343538	(DIN 7980) M5.1 LOCK WASHER	190	1346974	WARNING LABEL
140	1320101	(DIN 6797A) M5.3 EXT TOOTH WASHER	195	438-01-007-0042	WIRE NUT
141	1343034	SPRING HOOK ASSY	196	1343046	POWER CABLE
142	1343538	(DIN 7980) M5.1 LOCK WASHER	197	1342906	1/2" BLADE WRENCH
143	1243394	(DIN 84) M5 X 10MM CHEESE HD SCR	198	428-06-101-0003	2.5MM HEX WRENCH
144	1243398	(DIN 934) M8 HEX NUT			

\* NOT SHOWN ASSEMBLED

## NOTE A:

USE CROSS CUT BLADES ONLY! DO NOT USE BLADES DESIGNED FOR RIPPING, COMBINATION BLADES OR BLADES WITH EXCESSIVE HOOK ANGLES.

## STANDARD SAFETY EQUIPMENT

In order to promote tool safety, Delta International Machinery Corp. strictly enforces the policy of repairing or replacing any damaged or missing standard safety equipment on machines presented to Delta Authorized Service Centers for service/repair. Any product which is presented to a Delta Authorized Service Center for repairs which contains missing or damaged standard safety equipment will have that equipment repaired or replaced and the customer will be charged for any such service/repairs. Customers can avoid such charges only if the missing safety component is supplied to the service center at the time of repair.

This parts list is provided to aid in obtaining service parts. Copies of the instruction and maintenance literature can be obtained through the Delta Technical Publications Department or through your local service outlet.