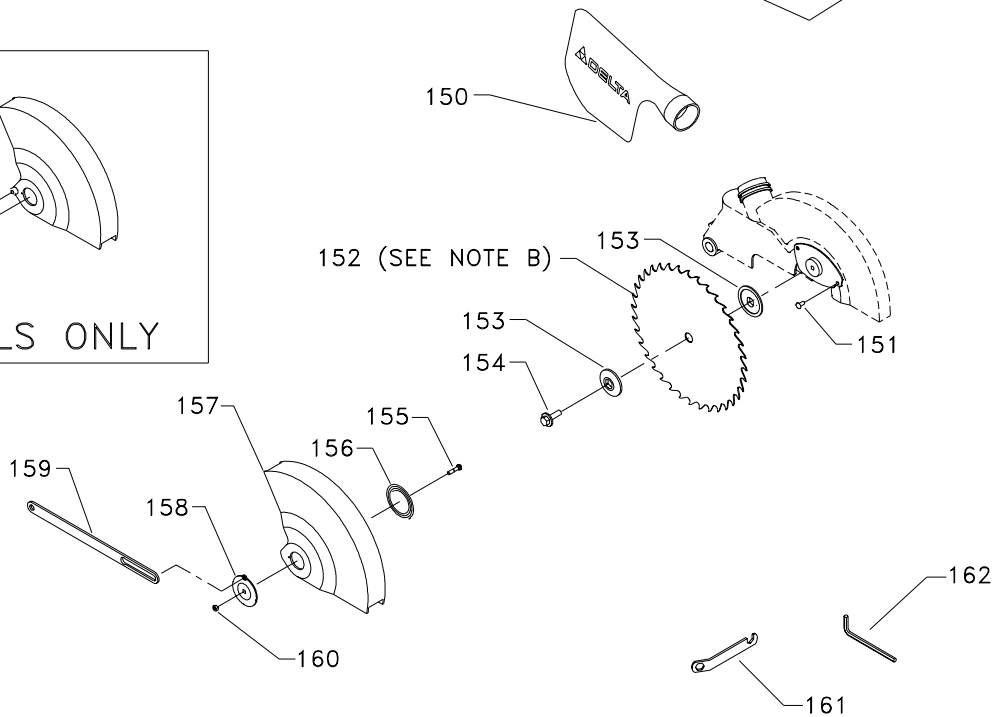
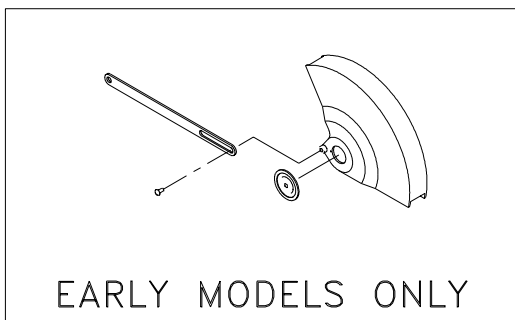
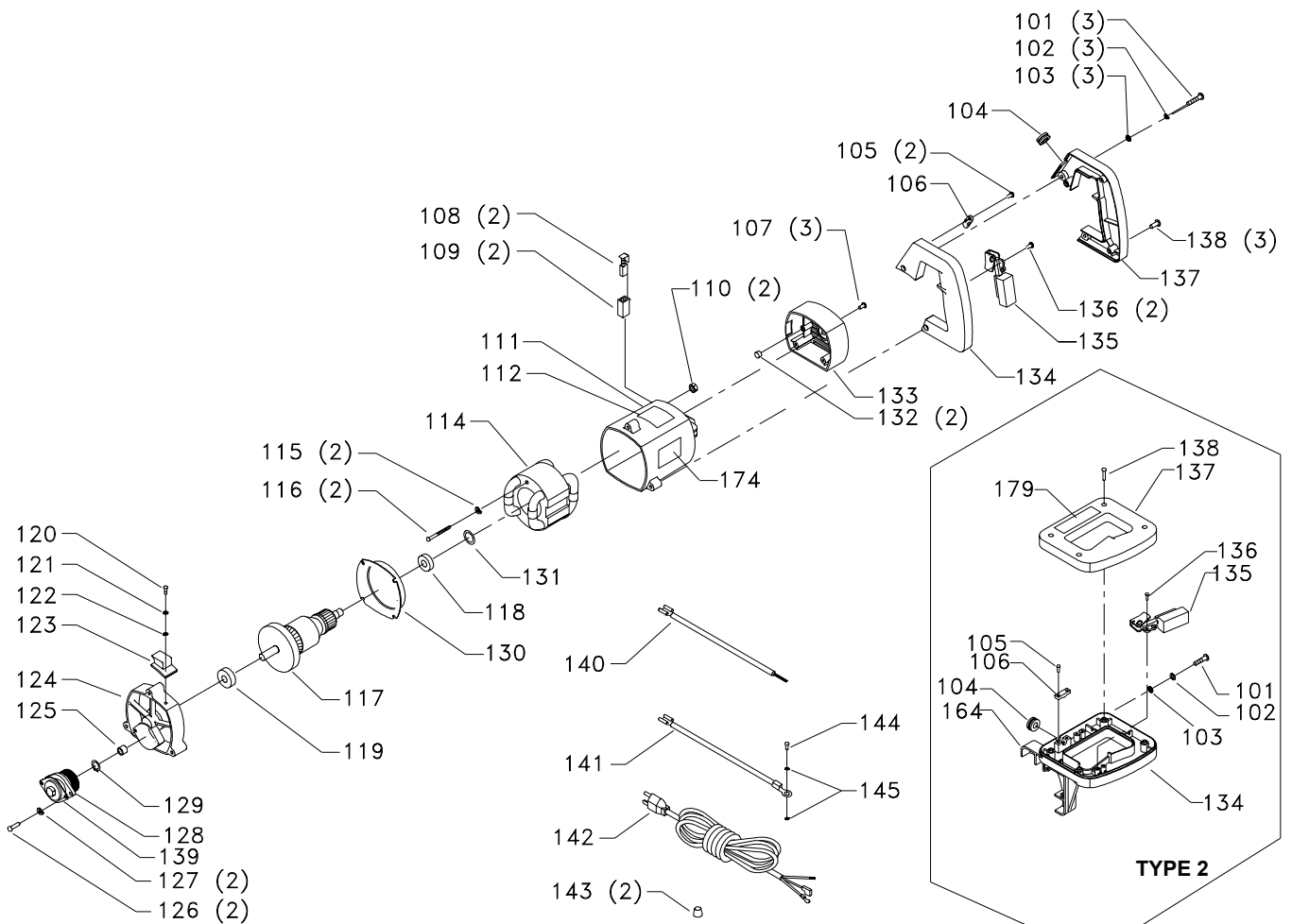


REPLACEMENT PARTS

<u>Ref.</u>	<u>No.</u>	<u>Part No.</u>	<u>Description</u>	<u>Ref.</u>	<u>No.</u>	<u>Part No.</u>	<u>Description</u>	
	1	899881	UPPER ARM ASSY, T2 & T3, INCL:			1349773	TRUNNION, T1	
		1349821	UPPER ARM ASSY, T1, INCL:			1349810	STUD	
	1A	1349910	DUST DEFLECTOR (SEE NOTE A)			1342455	M5 X 10MM PAN HD SCREW	
	2	1349826	DIRECTION ARROW, T1			1246102	M5.3 FLAT WASHER	
	3	899854	NAMEPLATE, T2 & T3			900409	POINTER, T2 & T3	
		1349822	NAMEPLATE, T1			1345467	POINTER, T1	
	4	1349823	WARNING LABEL			1246117	M4 X 10MM FLAT HD SCREW	
	5	1349833	WARNING LABEL			899892	INSERT, T2 & T3	
	6	1243394	M5 X 10MM CHEESE HD SCREW			1349808	INSERT, T1	
	6A	1342930	CLAMP			1349807	TABLE	
	7	1246016	M8 X 25MM HEX HD SCREW			60	1349806	LOWER GUARD
	7A	1243398	M8 HEX NUT			61	1243525	M4.1 LOCK WASHER
	8	1246004	M6 X 16MM HEX SOC HD SCREW			62	1243501	M4 X 10MM CHEESE HD SCREW
	9	1243520	M6.1 LOCK WASHER			63	899893	FENCE, T2 & T3
	10	1349809	BRACKET			1349805	FENCE, T1	
	11	1243525	M4.1 LOCK WASHER			64	1243530	M8 X 30MM HEX SOC HD SCREW
	12	1341235	M4 X 12MM CHEESE HD SCREW			65	1246157	M8.1 LOCK WASHER
	13	1243456	M6 HEX NUT			66	1243526	M8.4 FLAT WASHER
	14	1246015	M6 X 20MM HEX HD SCREW			67	1330410	M5 X 20MM SPRING PIN
	15	1349817	SPRING SLEEVE			68	1347123	EXT BRACE
	16	1349816	SPRING			69	n 903287	BASE ASSY, T2 & T3, INCL:
	17	1310311	M4 X 22MM SPRING PIN			1349804	BASE ASSY, T1, INCL: (SEE NOTE D)	
	18	899882	HANDLE, T2 & T3			70	1310016	5MM DRIVE SCREW
		1349815	HANDLE, T1			71	899885	SCALE, T2 & T3
	19	1343545	M4.1 FLAT WASHER			1349803	SCALE, T1	
	20	1243501	M4 X 10MM CHEESE HD SCREW			72	1347115	LOCK PLATE
	21	1246045	M6 X 10MM CHEESE HD SCREW			73	1310159	M4 X 6MM PAN HD SCREW
	22	n 900227	M6.4 FLAT WASHER			74	1347116	POINTER
	23	1349493	PINCH GUARD			75	1347117	BRACKET
	25	1343504	M5 LOCK NUT			76	899913	HANDLE, T2 & T3, INCL:
	26	1349813	PIVOT BOLT			1347118	HANDLE, T1, INCL:	
	27	1246051	M5 X 12MM HEX SOC HD SCREW			77	900187	PAD, T2 & T3
	28	1349812	PLATE			1347119	PAD, T1	
	29	1349953	SPECIAL SCREW			78	1243526	M8.4 FLAT WASHER
	30	1349811	BUMPER			79	1246157	M8.1 LOCK WASHER
	31	1345533	PIN			80	1246016	M8 X 25MM HEX HD SCREW
	32	1345534	O-RING			81	1341996	M10 LOCK NUT
	33	1313165	M16 LOCK NUT			82	1243502	M10 FLAT WASHER
	34	899887	KNOB, T2 & T3			83	1343275	M10.5 WAVE WASHER
		1345535	KNOB, T1			84	1243502	M10 FLAT WASHER
	35	899888	SCALE, T2 & T3			85	1347120	PIVOT STUD
	n	899888	SCALE, T1			86	1348257	WARNING LABEL
	36	1310016	5MM DRIVE SCREW			87	900264	FRONT CASTING DECAL
	37	1246053	M8 X 25MM HEX SOC HD SCREW					ACCESSORIES: (Optional)
	38	1246157	M8.1 LOCK WASHER			89	n 36-221	CLAMP ASSY, CONST OF:
	39	1246175	M6 X 30MM HEX HD SCREW			90	901-02-010-0561	#10-32 X 3/8" ROUND HD SCREW
	40	1243456	M6 HEX NUT			91	n 900227	M6.4 FLAT WASHER
	41	1349772	BRACKET			92	1345550	CLAMP CUP
	42	1246127	M6 X 30MM HEX SOC SET SCREW			93	1345549	SUPPORT
	43	900408	TRUNNION, T2 & T3			94	1345547	SHAFT
						95	899862	KNOB, T2 & T3
						n	899862	KNOB, T1
						96	1345548	RETAINER
						97	901-02-010-0561	#10-32 X 3/8" ROUND HD SCREW
						*		NOT SHOWN ASSEMBLED

NOTE A: PART NUMBER 1349910 (DUST DEFLECTOR), MUST BE SECURED WITH A SILICON TYPE ADHESIVE WHEN BEING SERVICED.

NOTE D: WHEN REPLACING THE BASE REF. 69, IF THE FENCE IS RETAINED BY 2 SCREWS AND WASHERS REF. 64, 65, AND 66 RATHER THAN 4, IT WILL BE NECESSARY TO REPLACE THE FENCE REF. 63 ALSO.

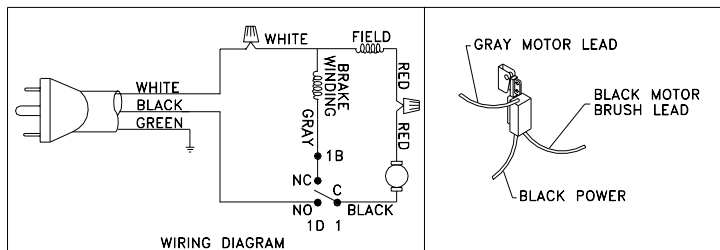


REPLACEMENT PARTS

Ref.	No.	Part No.	Description	Ref.	No.	Part No.	Description
*		901929	MOTOR ASSY, CONST OF: T2 & T3	127		1243525	M4.1 LOCK WASHER
		1347132	MOTOR ASSY, CONST OF: T1	128		1347133	JACKSHAFT ASSY, INCL:
101		1341770	M5 X 72MM PAN HD SCREW	129		1243497	EXT RET RING
102		1343538	M5.1 LOCK WASHER	130		1347138	FAN BAFFLE
103		1246102	M5.3 FLAT WASHER	131		1347139	WAVE WASHER
104		1343019	3/8" GROMMET	132		1345702	PAD
105		1344952	M4.2 X 16MM PAN HD SCREW	133		1347144	END COVER
106		1343527	CLAMP	134		904367	HANDLE (LH), T2 & T3, INCLS. REF 137
107		1344952	M4.2 X 16MM PAN HD SCREW	n	'	903589	HANDLE (LH), T1
108		1347143	BRUSH	135		899883	SWITCH, T2 & T3
109		1347142	BRUSH HOLDER			1347146	SWITCH, T1
110		1343504	M5 LOCK NUT	136		1340406	M4.2 X 10MM PAN HD SCREW
111		1347141	MOTOR HOUSING, INCL:	137		904367	HANDLE (RH), T2 & T3, INCLS. REF 134
112		899864	WARNING LABEL, T2 & T3			1347147	HANDLE (RH), T1
		1349824	WARNING LABEL, T1	138		1343051	M4.2 X 20MM PAN HD SCREW
114		1347140	FIELD	139		903474	COVER
115		1343538	M5.1 LOCK WASHER	140		1347148	RED JUMPER
116		1310148	M5 X 60MM PAN HD SCREW	141		1347161	BLACK JUMPER
117		1347136	ARMATURE ASSY, INCL:	142		1347149	POWER CORD
118		1347137	BEARING	143		438-01-007-0042	WIRE NUT
119		1310042	BEARING	144		1341235	M4 X 12MM CHEESE HD SCREW
120		1341235	M4 X 12MM CHEESE HD SCREW	145		1320102	M4.3 EXT TOOTH WASHER
121		1243525	M4.1 LOCK WASHER	150		900243	DUST BAG, T2 & T3
122		1343545	M4.1 FLAT WASHER			1347160	DUST BAG, T1
123		1347135	COVER	151		1345431	SPECIAL SCREW
124		899866	HOUSING, T2 & T3	152		OPTIONAL	BLADE (SEE NOTE B)
n	'	899866	HOUSING, T1	153		1347150	INNER/OUTER FLANGE
125		1343259	NEEDLE BEARING	154		1347151	BLADE BOLT
126		1347162	M4 X 18MM PAN HD SCREW	155		1343054	M5 X 10MM CARRIAGE HD SCREW
				156		1342998	SPRING
				*		1345435	BLADE GUARD ASSY, CONST OF:
				157		899898	LOWER BLADE GUARD, T2 & T3 & LATE
				n		1345460	LOWER BLADE GUARD, EARLY T1
						1345433	PLATE
				159		1345418	LINK
				160		1343504	M5 LOCK NUT
				161		1342906	1/2" BLADE WRENCH
				162		432-07-101-0004	5MM HEX WRENCH
				164		900260	BRACKET, T2 & T3
				171		1349953	SPECIAL SCREW
				174		899872	MOTOR DEC PLATE, T2 & T3
				179		899917	LABEL, T2 & T3

NOTE B: USE CROSS CUT BLADES ONLY DO NOT USE BLADES DESIGNED FOR RIPPING, COMBINATION BLADES OR BLADES WITH EXCESSIVE HOOK ANGLES

* NOT SHOWN ASSEMBLED



STANDARD SAFETY EQUIPMENT

In order to promote tool safety, Delta Machinery strictly enforces the policy of repairing or replacing any damaged or missing standard safety equipment on machines presented to Delta Authorized Service Centers for service/repairs. Any product which is presented to a Delta Authorized Service Centers for repairs which contains missing or damaged standard safety equipment will have that equipment repaired or replaced and the customer will be charged for any such service/repairs. Customers can avoid such charges only if the missing safety component is supplied to the service center at the time of repair.

This parts list is provided to aid in obtaining service parts. Copies of the instruction and maintenance literature can be obtained through the Delta Technical Publications Department or through your service outlet.