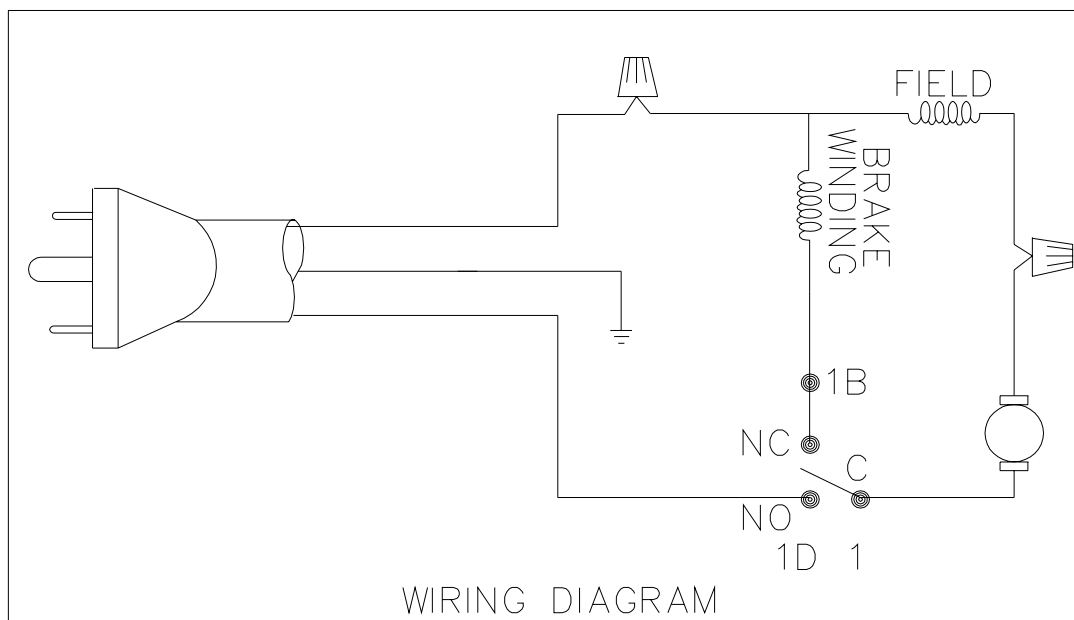
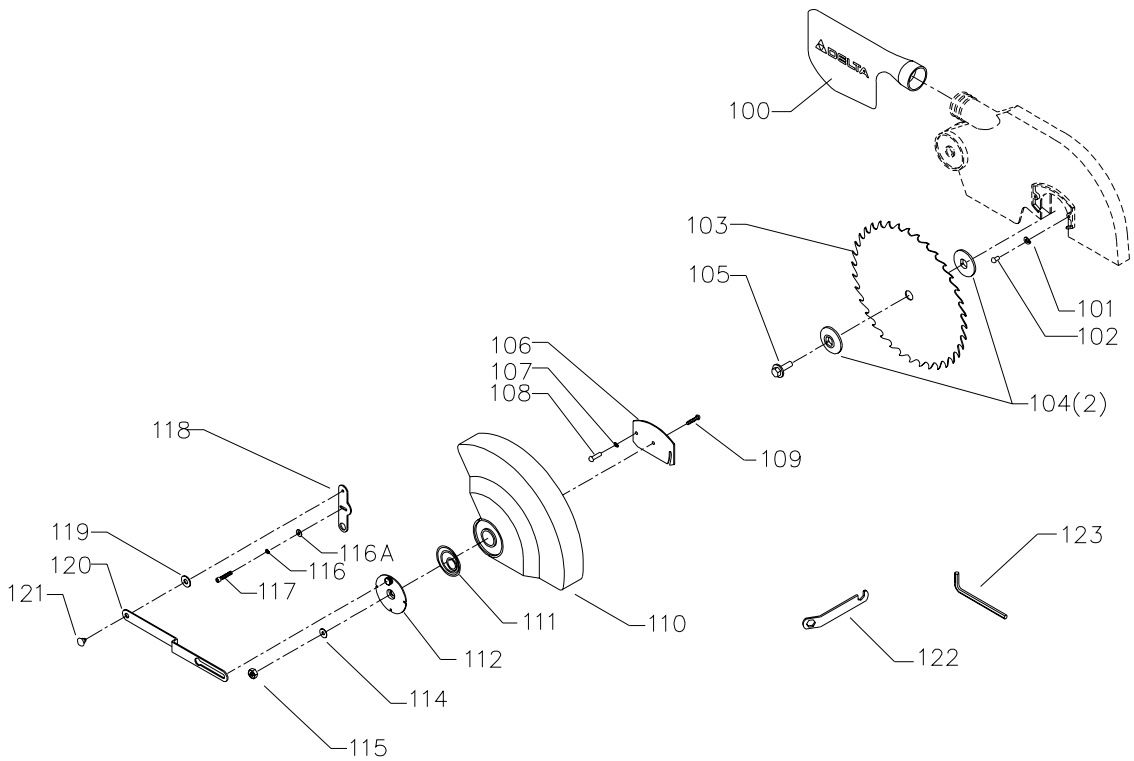
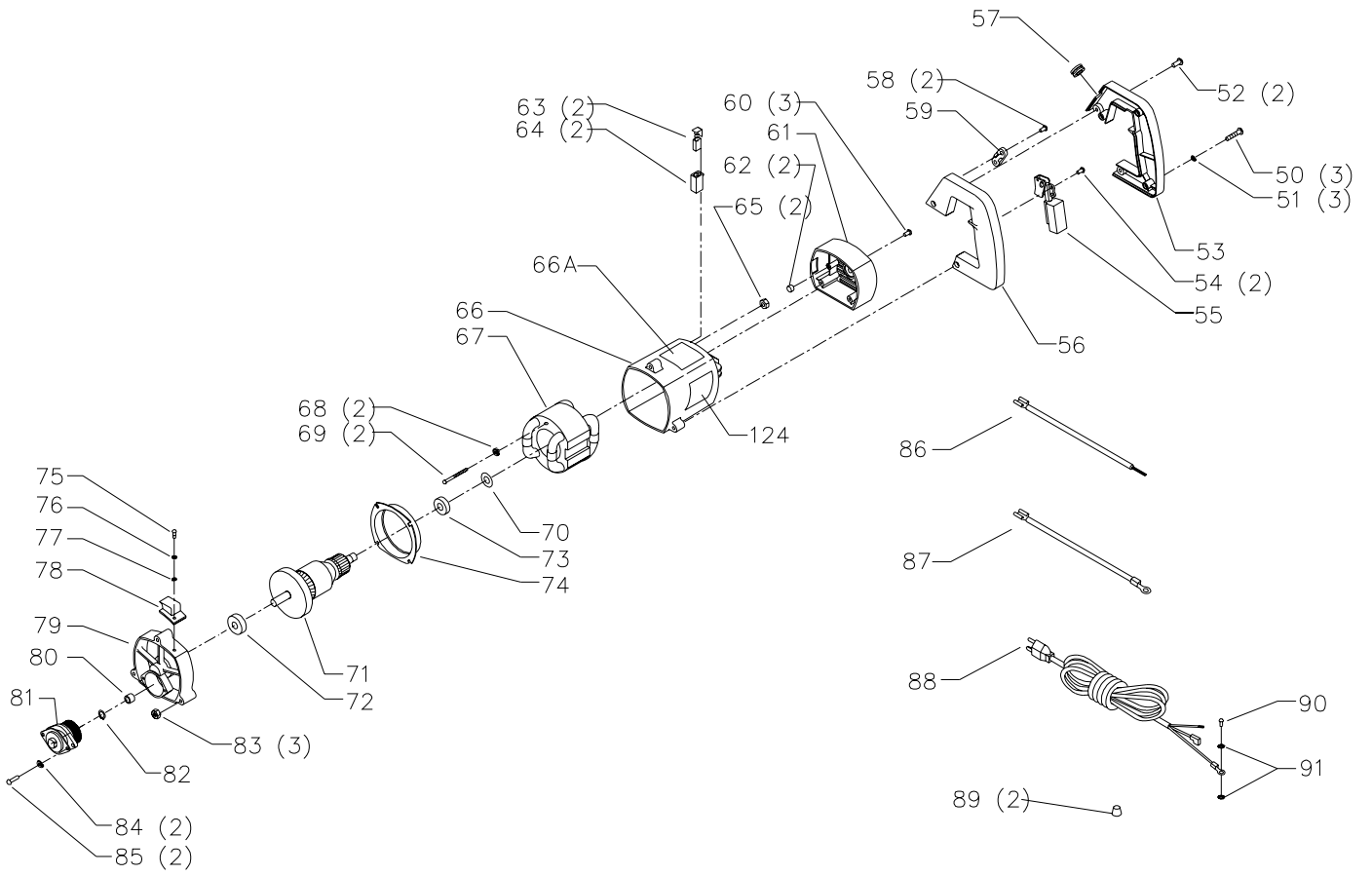


# REPLACEMENT PARTS

Ref. No.	Part No.	Description	Ref. No.	Part No.	Description
1	899853	UPPER GUARD ASSY, INCL:	26	1347115	LOCK PLATE
1A	1246047	M5 X 16MM CHEESE HD SCREW	27	1310159	M4 X 6MM PAN HD SCREW
1B	1343538	M5.1 LOCK WASHER	28	1347116	POINTER
1C	1349870	BUMPER - CANNOT FURNISH	29	1347117	BRACKET
1D	1343504	M5 LOCK NUT	30	899913	HANDLE ASSY, T3, INCL:
2	899854	NAME PLATE, T3		1347118	HANDLE ASSY, T1, T2, INCL:
	1349471	NAMEPLATE, T1, T2 (CMO)	31	900187	PAD, T3
	1343980	NAMEPLATE, T1, T2 (EMO)		1347119	PAD, T1, T2
**	1347166	PICTORIAL WARNING, T1, T2 (EMO)	32	1243526	M8.4 FLAT WASHER
3	899864	WARNING LABEL, T1, T2	33	1246157	M8.1 LOCK WASHER
3A	1342953	DIRECTION DECAL, T1, T2	34	1246016	M8 X 25MM HEX HD SCREW
4	1343492	M12 LOCK NUT	35	1347120	PIVOT STUD
5	893244	M12 FLAT WASHER	36	1243502	M10 FLAT WASHER
6	1347128	STOP SCREW	37	1343275	M10.5 WAVE WASHER
7	1347127	PIN	38	1243502	M10 FLAT WASHER
8	1343544	SPRING	39	1341996	M10 LOCK NUT
9	899856	BRACKET, T3 - CANNOT FURNISH	40	36-221	CLAMP ASSY, INCL.:
	1347126	BRACKET, T1, T2 - CANNOT FURNISH	48	900264	FRONT CASTING DECAL
10	1347125	TABLE	49	1348257	WARNING LABEL
11	1347131	SPRING	49A	905915	WARNING LABEL ( NOTE C)
12	1243456	M6 HEX NUT	*		NOT SHOWN ASSEMBLED
13	1330151	M6 X 35MM HEX HD SCREW	**		NOT SHOWN
14	1347130	PIVOT BOLT			EMO=EARLY MODELS ONLY
15	1243530	M8 X 30MM HEX SOC HD SCREW			
16	1246157	M8.1 LOCK WASHER			
17	1243530	M8 X 30MM HEX SOC HD SCREW			
18	1246157	M8.1 LOCK WASHER			
19	1243526	M8.4 FLAT WASHER			
20	899857	FENCE			
21	1330410	M5 X 20MM SPRING PIN			
22	1347123	EXT BRACE			
23	899858	BASE ASSY, T3, INCL:			
	1347121	BASE ASSY, T1, T2, INCL:			
24	1310016	5MM DRIVE SCREW			
25	899859	SCALE, T3, CANNOT FURNISH			
	1347122	SCALE, T1, T2			

**NOTE C:** THIS LABEL SHOULD BE ADDED TO ALL UNITS RECEIVED FOR REPAIR!





# REPLACEMENT PARTS

Ref.			Ref.		
<u>No.</u>	<u>Part No.</u>	<u>Description</u>	<u>No.</u>	<u>Part No.</u>	<u>Description</u>
*	1347132	MOTOR ASSY, T1, T2, INCL.:	85	1347162	M4 X 18MM PAN HD SCREW
50	900225	M5 X 72MM PAN HD SCREW	86	1347148	RED JUMPER
51	1343538	M5.1 LOCK WASHER	87	1347161	BLACK JUMPER
52	1343051	M4.2 X 20MM PAN HD SCREW	88	1347149	POWER CORD
53	903589	HANDLE SET, T3	89	438-01-007-0042	WIRE NUT, T1, T2
	1347147	HANDLE RH, T1 & T2	90	900226	M4 X 8MM PAN HD SCREW, T1, T2
54	1340406	M4.2 X 10MM PAN HD SCREW	91	1320102	M4.3 EXT TOOTH WASHER
55	899863	SWITCH, T3	92	903474	COVER
	1347146	SWITCH, T1, T2	100	36-222	OPTIONAL DUST BAG, T3
56	903589	HANDLE LH, T1 & T2		1347160	DUST BAG, T1, T2
57	1343019	3/8" GROMMET	101	1243525	M4.1 LOCK WASHER
58	1344952	M4.2 X 16MM PAN HD SCREW	102	1341235	M4 X 12MM CHEESE HD SCREW
59	1343527	CLAMP	103	OPTIONAL	BLADE ( NOTE B)
60	1344952	M4.2 X 16MM PAN HD SCREW	104	1347150	FLANGE
61	1347144	END COVER	105	1342989	BLADE BOLT
62	1345702	PAD	106	905889	INNER PLATE, T3
63	1347143	BRUSH		1347152	INNER PLATE, T1, T2
64	1347142	BRUSH HOLDER	107	1243525	M4.1 LOCK WASHER
65	1343504	M5 LOCK NUT	108	1341235	M4 X 12MM CHEESE HD SCREW
66	1347141	MOTOR HOUSING, INCL.;	109	1343054	M5 X 10MM CARRIAGE HD SCREW
66A	899864	WARNING LABEL	110	905890	LOWER GUARD
	1349473	WARNING LABEL, T1, T2	111	1347154	SPRING
67	900305	FIELD	112	1347155	PLATE
68	1343538	M5.1 LOCK WASHER	114	1246102	M5.3 FLAT WASHER
69	1310148	M5 X 60MM PAN HD SCREW	115	1343504	M5 LOCK NUT
70	1347139	WAVE WASHER	116	1243520	M6.1 LOCK WASHER
71	900306	ARMATURE ASSY, T3, INCL.:	116A	900227	M6.4 FLAT WASHER, T1, T2
	1347136	ARMATURE ASSY, T1, T2, INCL.:	117	1246004	M6 X 16MM HEX SOC HD SCREW
72	1310042	BEARING	118	1347159	BRACKET
73	1347137	BEARING	119	1243526	M8.4 FLAT WASHER
74	1347138	FAN BAFFLE	120	1347158	LINK
75	1341235	M4 X 12MM CHEESE HD SCREW	121	1347157	PIVOT SCREW
76	1243525	M4.1 LOCK WASHER	122	1342906	1/2" BLADE WRENCH
77	1343545	M4.1 FLAT WASHER	123	432-07-101-0004	5MM HEX WRENCH
78	1347135	COVER	124	899872	DEC PLATE, T3
79	899866	HOUSING			
80	1343259	NEEDLE BEARING	*	NOT SHOWN ASSEMBLED	
81	900308	JACKSHAFT ASSY, T3, INCL.:	**	NOT SHOWN	
	1347133	JACKSHAFT ASSY, T1, T2, INCL.:		EMO=EARLY MODELS ONLY	
82	1243497	EXT RET RING			
83	1243395	M5 HEX NUT ( NOTE A)			
84	1243525	M4.1 LOCK WASHER			

**NOTE A:** FOR SHIPPING PURPOSES ONLY!

**NOTE B:** USE CROSS CUT BLADES ONLY! DO NOT USE BLADES DESIGNED FOR RIPPING, COMBINATION BLADES OR BLADES WITH EXCESSIVE HOOK ANGLES!

---

## STANDARD SAFETY EQUIPMENT

In order to promote tool safety, Delta Machinery strictly enforces the policy of repairing or replacing any damaged or missing standard safety equipment on machines presented to Delta Authorized Service Centers for service/repairs. Any product that is presented to a Delta Authorized Service Center for repair with damaged or missing standard safety equipment will have that equipment repaired or replaced and the customer will be charged for any such service/repairs. Customers can avoid such charges only if the missing safety component is supplied to the service center at the time of repair.

This parts list is provided to aid in obtaining service parts. Copies of the instruction and maintenance literature can be obtained through the Delta Technical Publications Department, your service outlet, or by visiting the Delta Website @ [www.deltamachinery.com](http://www.deltamachinery.com).