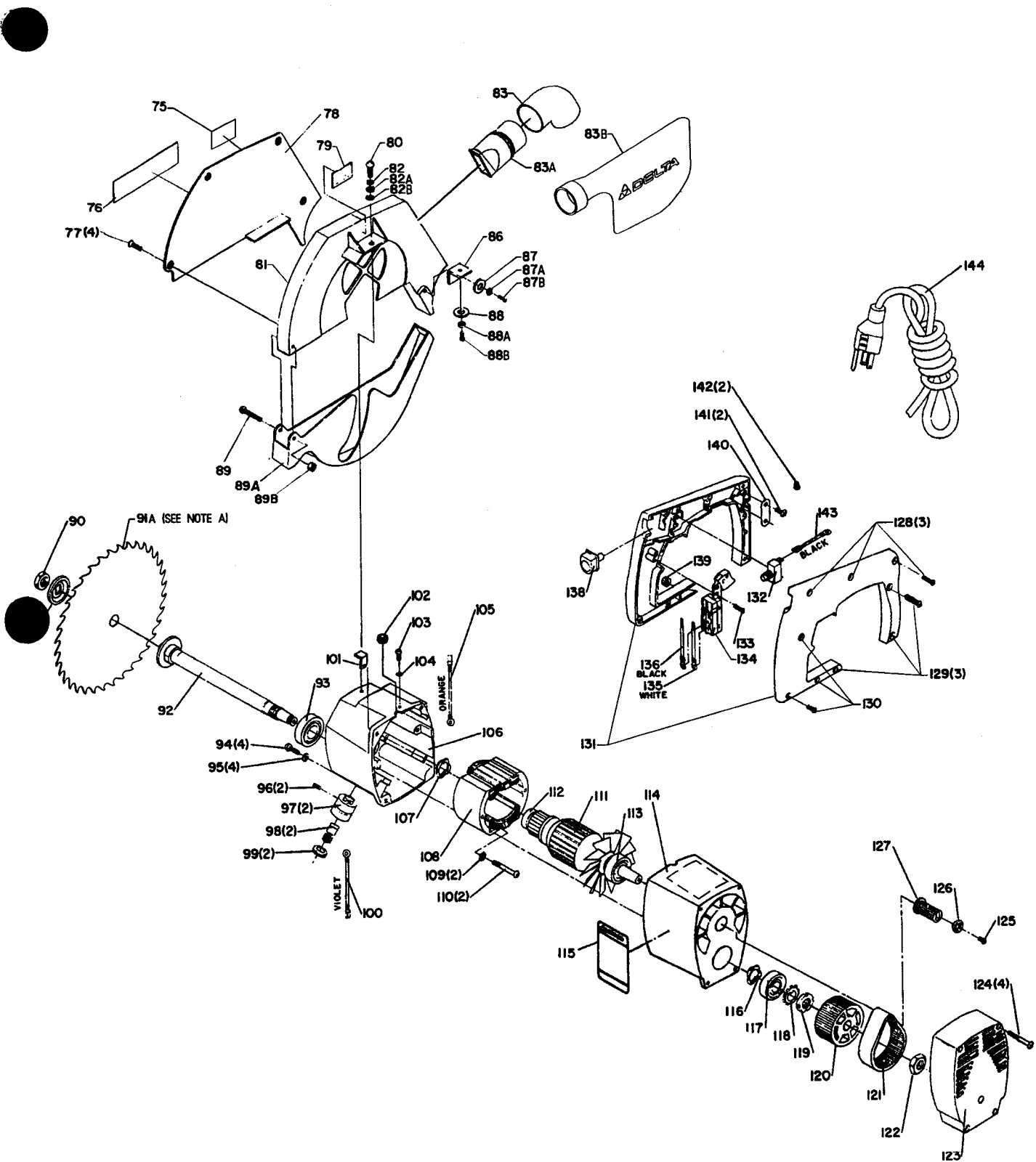


REPLACEMENT PARTS

<u>REF. NO.</u>	<u>PART NUMBER</u>	<u>DESCRIPTION</u>
1	1246018	(DIN 933) M10 X 25MM HEX HD SCR
2	904-02-020-1704	3/8" LOCK WASHER
3	1313158	FENCE
4	1310196	WASHER
5	1310135	(DIN 963) M4 X 8MM FLAT HD SCR
6	1313155	INSERT
7	1313154	TABLE
8	1310155	(DIN 84) M5 X 8MM CHEESE HD SCR
9	1313153	SCALE
10	1313152	BASE
11	1313151	HANDLE
12	1310155	(DIN 84) M5 X 8MM CHEESE HD SCR
13	1313145	PLATE
14	1313144	PLATE
15	1313143	PIN
16	1313142	SPRING
17	1313146	PLUNGER HOUSING
18	1313149	PIN
19	904-02-020-1702	1/4" LOCK WASHER
20	1246015	(DIN 933) M6 X 20MM HEX HD SCR
21	1313147	HANDLE
22	1313148	(DIN 985) M6 LOCK NUT
23	1313199	M8 X 16MM HEX SOC SET SCR
24	1243398	(DIN 934) M8 HEX NUT
25	904-02-010-1703	5/16" LOCK WASHER
26	1246016	(DIN 933) M8 X 25MM HEX HD SCR
27	1313141	DOWEL PIN
28	1313140	SUPPORT
29	1313165	(DIN 985) M16 LOCK NUT
30	1313164	(DIN 137B) M17 WAVE WASHER
31	1313163	(DIN 915) M10 X 47MM SLOT SET SCR
32	1313193	SCR
33	1313194	(DIN 137B) M8.4 WAVE WASHER
34	1313150	LATCH
35	1243496	(DIN 934) M10 HEX NUT
36	904-02-020-1704	3/8" LOCK WASHER
37	1243413	(DIN 915) M10 X 40MM HEX SOC SET SCR
38	1313159	SPRING
39	1313160	BUSHING
40	1246002	(DIN 84) M6 X 12MM CHEESE HD SCR
41	1313168	CLAMP
42	1313161	UPPER ARM
42A	1313208	CLIP
43	904-01-010-1605	3/8" FLAT WASHER
44	904-02-010-1703	5/16" LOCK WASHER
45	1246016	(DIN 933) M8 X 25MM HEX HD SCR
46	1310109	(DIN 931) M16 X 130MM HEX HD SCR
47	1243496	(DIN 934) M10 HEX NUT
48	904-02-020-1704	3/8" LOCK WASHER
49	1313167	(DIN 551) M10 X 55MM HEX SOC SET SCR

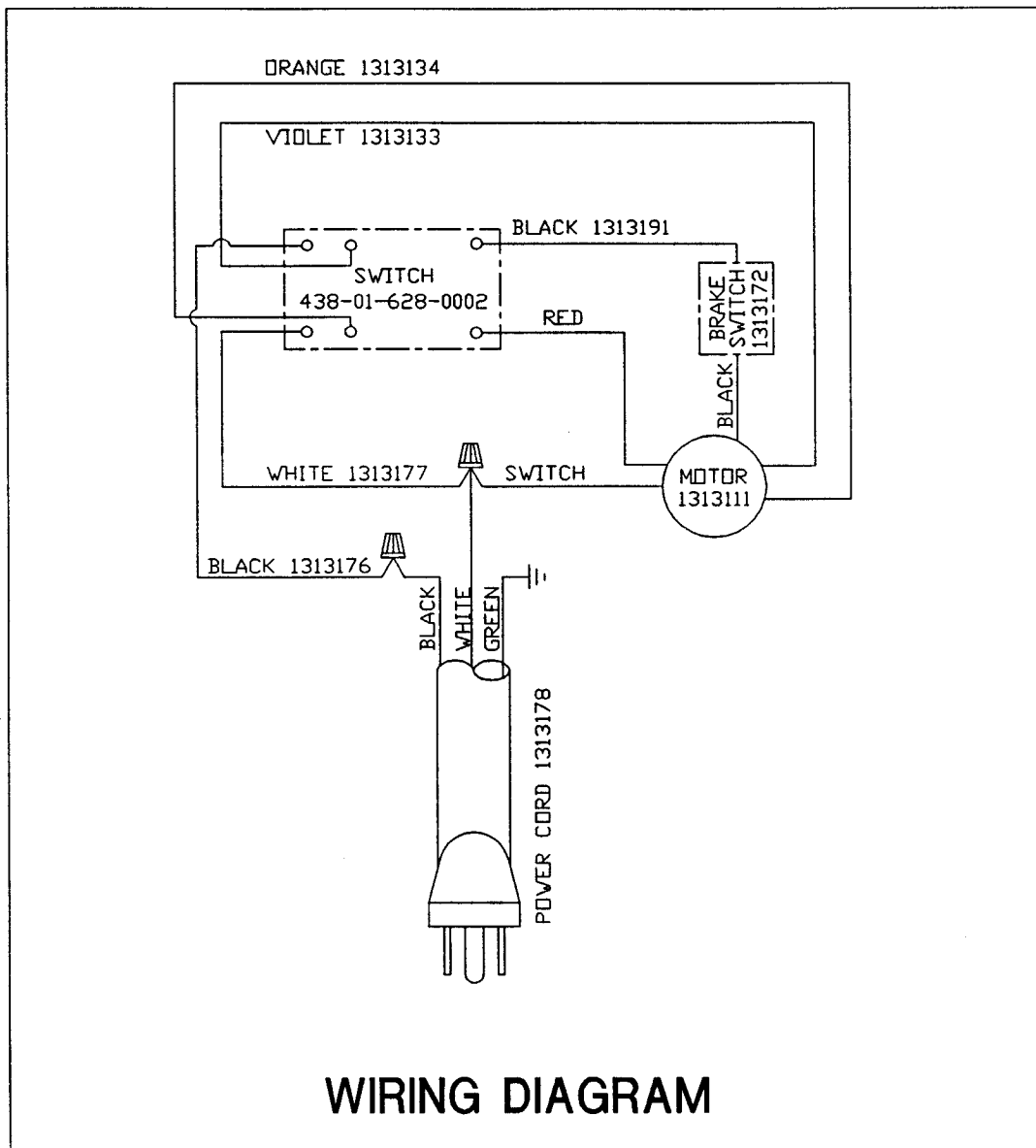


REPLACEMENT PARTS

<u>REF. NO.</u>	<u>PART NUMBER</u>	<u>DESCRIPTION</u>	<u>REF. NO.</u>	<u>PART NUMBER</u>	<u>DESCRIPTION</u>
*	1313370	GUARD KIT ASSY, CONST OF;	106	1313117	FRONT HOUSING
75	1346964	BLADE WARNING LABEL	107	1313118	(DIN 137B) M21 WAVE WASHER
76	1313357	NAMEPLATE	108	1313138	FIELD ASSY.
77	1330398	(DIN 963) M4 X 12MM FLAT HD SCR	109	904-03-030-1795	3/16" EXT TOOTH WASHER
78	1313355	SIDE COVER	110	1310148	(DIN 85) M5 X 60MM PAN HD SCR
79	1340049	LABEL	111	1313125	ARMATURE ASSY, INCL;
80	1246002	(DIN 84) M6 X 12MM CHEESE HD SCR	112	1313120	BEARING
81	1313354	GUARD	113	1313122	BEARING
82	904-02-020-1702	1/4" LOCK WASHER	114	1313359	REAR HOUSING
82A	904-01-010-1604	5/16" FLAT WASHER	115	1346966	WARNING LABEL
82B	1313361	(DIN 6797A) M6.4 EXT TOOTH WASHER	116	1313124	WAVE WASHER
83	1313352	ELBOW	117	1313122	BALL BEARING
83A	1313371	DUST SPOUT	118	1313126	LOCKWASHER
83B	34-084	DUST BAG	119	1313127	(DIN KM3) NUT
86	1313351	BRACKET	120	1313162	PULLEY
87	904-01-010-1604	5/16" FLAT WASHER	121	34-085	BELT
87A	904-02-020-1702	1/4" LOCK WASHER	122	1310188	(DIN 934) M14 HEX NUT
87B	1246002	(DIN 84) M6 X 12MM CHEESE HD SCR	123	1313360	PULLEY COVER
88	904-01-010-1604	5/16" FLAT WASHER	124	1310158	(DIN 84) M5 X 45MM CHEESE HD SCR
88A	904-02-020-1702	1/4" LOCK WASHER	125	1344933	(DIN 912) M5 X 20MM HEX SOC HD SCR
88B	1246067	(DIN 84) M6 X 16MM CHEESE HD SCR	126	1313202	NUT
89	1243331	(DIN 912) M6 X 40MM HEX SOC HD SCR	127	1313196	DRIVE PULLEY
89A	1313358	LOWER GUARD	128	1347659	(DIN 7981B) M5 X 25MM PAN HD SCR
89B	1313148	(DIN 985) M6 LOCK NUT	129	1310146	(DIN 40) M5 X 30MM PAN HD SCR
90	902-01-201-8563	ARBOR NUT	130	1347660	(DIN 7981B) M5 X 20MM PAN HD SCR
91	1313186	FLANGE	131	1313173	HANDLE SET
91A	OPTIONAL	BLADE (SEE NOTE A)	132	1313172	BRAKE SWITCH
*	1313111	MOTOR ASSY, CONST OF;	133	1343923	(DIN 7981B) M5.5 X 10MM PAN HD SCR
92	1313139	ARBOR SHAFT	134	438-01-628-0002	SWITCH
93	1313116	BALL BEARING	135	1313177	JUMPER WIRE WHITE
94	1310157	(DIN 85) M6 X 20MM PAN HD SCR	136	1313176	JUMPER WIRE BLACK
95	904-02-020-1702	1/4" LOCK WASHER	138	1313171	BRAKE BUTTON
96	1310172	SPECIAL SCR	139	1243395	(DIN 934) M5 HEX NUT
97	1313112	BRUSH HOLDER	140	1313195	CLAMP
98	1313113	BRUSH	141	1343923	(DIN 7981B) M5.5 X 10MM PAN HD SCR
99	1313114	BRUSH CAP	142	438-01-007-0009	WIRE NUT
100	1313133	JUMPER WIRE VIOLET	143	1313191	JUMPER WIRE BLACK
101	1313137	"L" BRACKET	144	1313178	POWER CORD
102	1313132	BUSHING	**	422-30-101-0002	8MM HEX WRENCH
103	1310159	(DIN 85) M4 X 6MM PAN HD SCR	**	1313197	ARBOR WRENCH
104	1310210	(DIN 6797A) M4.3 EXT TOOTH WASHER			
105	1313134	JUMPER WIRE ORANGE			

* NOT SHOWN ASSEMBLED
** NOT SHOWN

NOTE A:
USE CROSS CUT BLADES ONLY! DO NOT USE BLADES
DESIGNED FOR RIPPING, COMBINATION BLADES OR
BLADES WITH EXCESSIVE HOOK ANGLES.



STANDARD SAFETY EQUIPMENT

In order to promote tool safety, Delta International Machinery Corp. strictly enforces the policy of repairing or replacing any damaged or missing standard safety equipment on machines presented to Delta Authorized Service Centers for service/repair. Any product which is presented to a Delta Authorized Service Center for repairs which contains missing or damaged standard safety equipment will have that equipment repaired or replaced and the customer will be charged for any such service/repairs. Customers can avoid such charges only if the missing safety component is supplied to the service center at the time of repair.

This parts list is provided to aid in obtaining service parts. Copies of the instruction and maintenance literature can be obtained through the Delta Technical Publications Department or through your local service outlet.