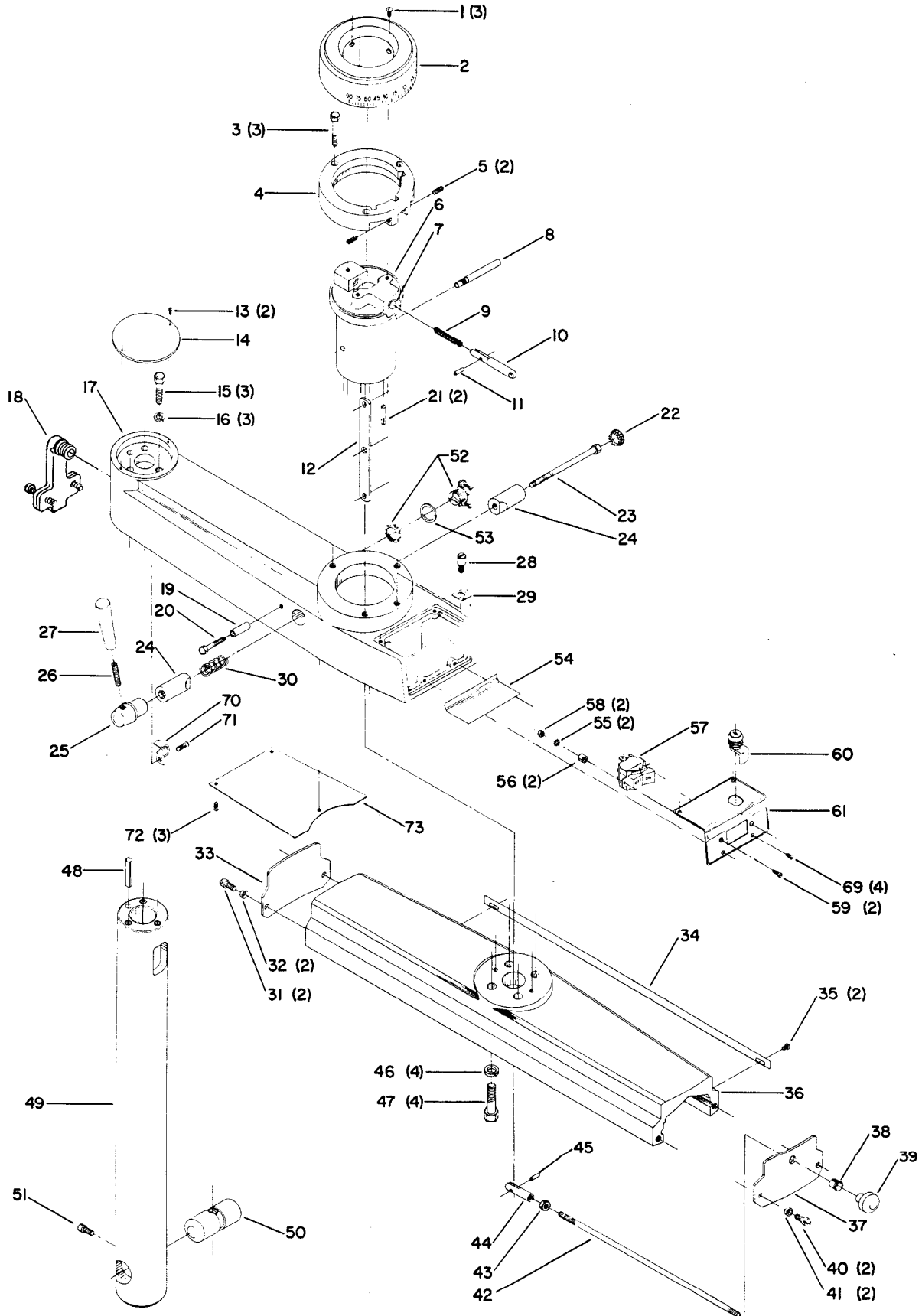




# 12" RADIAL SAW "MODELS 33-790, 33-791, 33-792, 33-793"

**RAS-3A**  
424-02-651-0005  
Revised 10-15-85

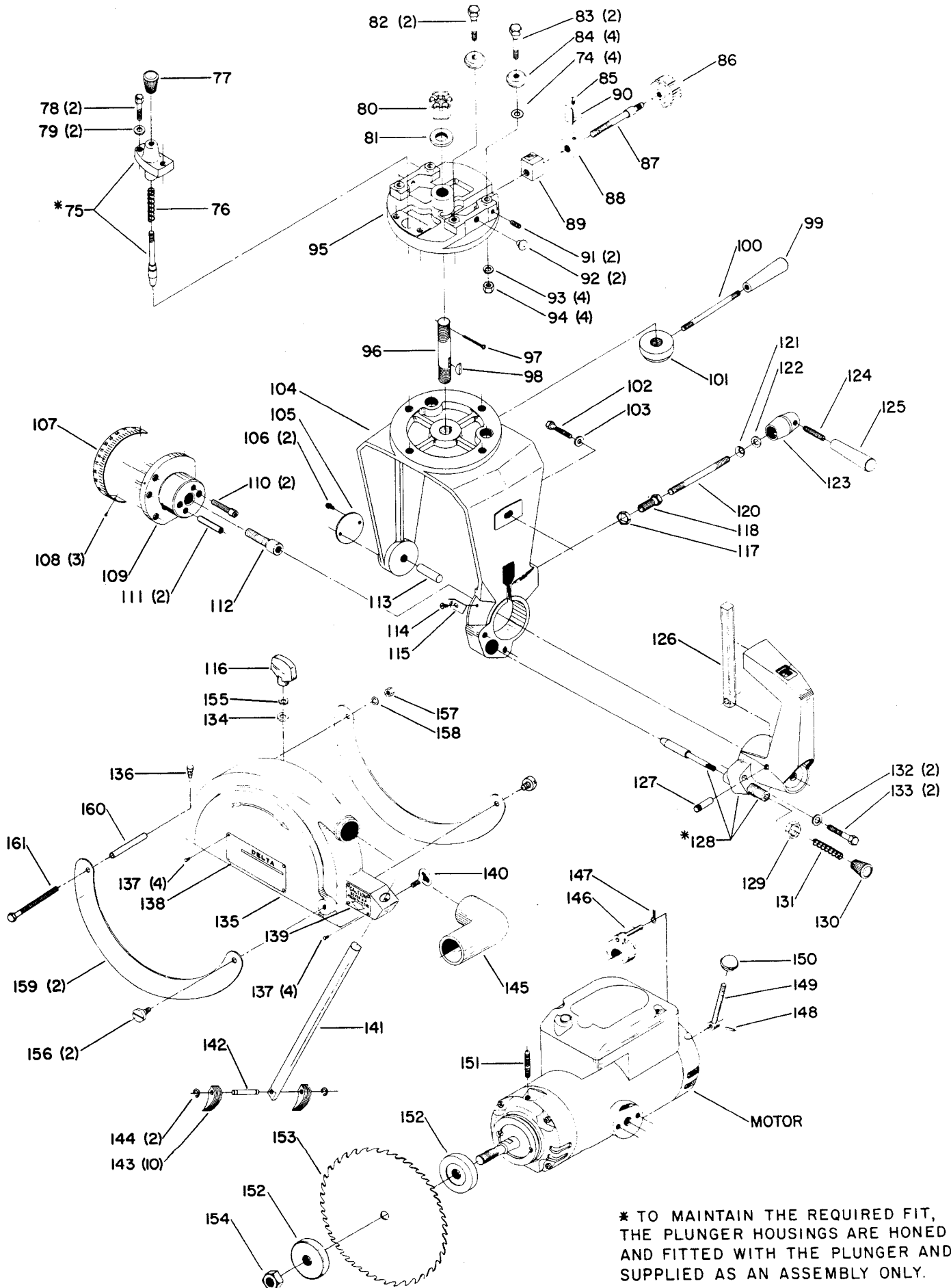


# Replacement Parts

Ref. No.	Part No.	Description	Ref. No.	Part No.	Description
1	901-02-010-7562	#10-32 X 5/16" R.H.S.	37	424-02-331-0013	Frt. Covering, Incl:
2	424-02-031-0030	Index Cover	38	910-01-071-0132	Heyco Bushing
3	424-02-112-0013	Spec. Washer	39	931-01-042-0455	Knob
4	424-02-088-0005	Stop	40	901-02-050-0718	Fil. H.S.
5	901-04-161-9252	1/4-29 X 1/2" S.S.S.	41	904-07-081-6237	Rubber Washer
6	424-02-030-0004	Index Column	42	424-02-108-0012	Rod
7	424-02-017-0002	Bushing	43	902-01-020-5435	5/16"-18 Hex Nut
8	424-02-071-0009	Pin	44	424-02-105-0002	Sleeve
9	928-01-251-8872	Spring	45	905-01-010-2729	3/16 X 1/2" Roll Pin
10	424-02-071-0016	Pin	46	904-02-020-1705	1/2" L.W.
11	905-01-010-2729	3/16 X 1/2" Roll Pin	47	901-03-010-0765	1/2-13 X 1-1/2" Hex Soc.
12	424-02-004-0014	Bar			Hd. Cap Scr.
13	901-02-010-0558	#8-32 X 1/2" R. H. S.	48	905-02-011-8145	3/8 X 1-1/2" Groove Pin
14	424-04-031-0009	Support Cover	49	424-02-030-0003	Column
15	901-01-060-0648	3/8-16 X 1-1/4" H.H.C.S.	50	424-02-035-0001	Cylinder
16	904-02-020-1704	3/8" L.W.	51	901-03-010-3350	S.H.S.
17	424-02-089-0014	Support	52	438-01-004-0007	Box Connector
18	438-01-009-0040	Fitting	53	904-07-011-8401	Fiber Washer
19	1087842	Spacer	54	438-01-011-0036	Ins. Paper
20	901-01-060-0614	1/4-20 X 1-1/4" H.H.C.S.	*	424-02-331-0021	Cover Man. Cont.
21	905-02-040-6846	1/4 X 1" Groove Pin	55	904-03-030-1788	#6 Ext. T.L.W.
22	961-01-010-7494	Plug	56	424-02-109-0001	Spacer
23	901-01-101-9846	5/16-18 X 4-1/4" H.H.C.S.	57	438-01-017-0084	Switch - Man Cont
24	424-02-027-0010	Clamp	58	902-01-120-1215	#6-32 Hex Nut
25	424-02-107-0001	Hub	59	901-02-010-0588	#6-32 X 3/4" H.H.S.
26	901-04-080-0115	Hdls. S.S.	60	424-02-368-0002	Lock w/2 Keys
27	931-01-072-0453	Handle	61	424-02-031-0031	Switch Cover
28	424-02-071-0017	Pin	*	424-02-331-0020	Cover - Mag. Cont.
29	951-01-021-7019	Pointer	55	904-03-030-1788	#6 Ext. T.L.W.
30	928-01-601-8873	Spring	56	424-02-109-0001	Spacer
31	901-02-050-0718	Fil. H.S.	57	438-01-017-0085	Switch - Mag. Cont.
32	904-07-081-6237	Rubber Washer	58	902-01-120-1215	#6-32 Hex Nut
33	424-02-031-0027	Rear Cover	59	901-02-010-0588	#6-32 X 3/4" R.H.S.
34	951-02-011-8282	Rip Scale	60	424-02-368-0002	Lock w/2 Keys
35	901-02-160-3729	#8-32 X 1/4" Pan. H.S.	61	424-02-031-0031	Switch Cover
36	424-02-055-0010	Guide (Early Model - SEE B)	69	901-02-010-0558	#8-32 X 1/4" R.H.S.
36	424-02-055-0011	Guide (Current Model - SEE B)	70	438-01-004-0030	Clamp 1Ph. Mtr.
			70	438-01-004-0054	Clamp 3Ph. Mtr.
			71	901-02-010-0509	1/4-20 X 1/2" R.H.S.
			72	901-02-010-0558	#8-32 X 1/4" R.H.S.
			73	424-02-031-0032	Bottom Cover
			74	904-01-010-1620	Washer

\* Not Shown

B - A bearing, yoke, roller head and guide change was incorporated into units starting with Ser. #IM-7800, early bearings had convex outer races. Current bearings have concave races.

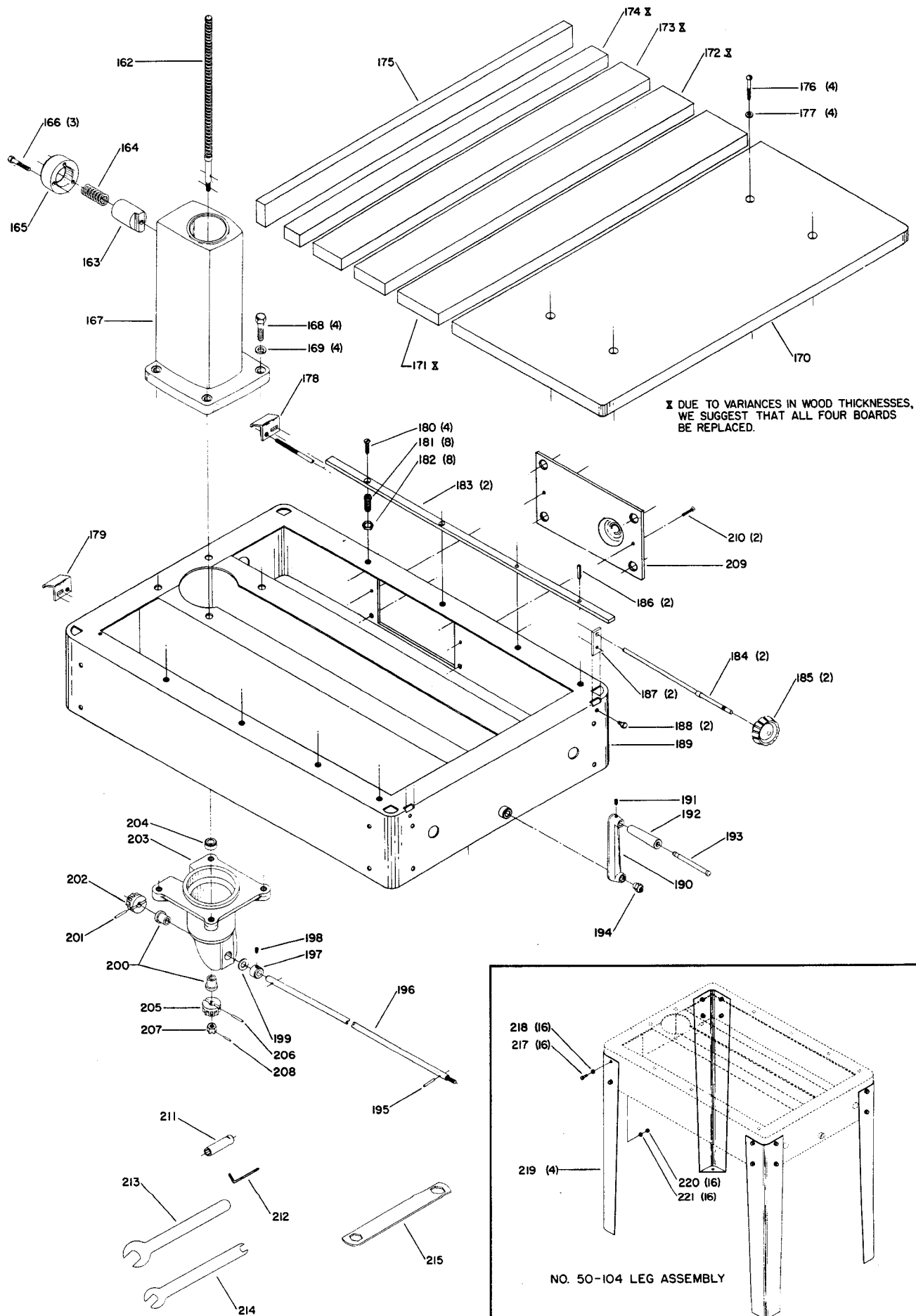


# Replacement Parts

Ref. No.	Part No.	Description	Ref. No.	Part No.	Description
75	424-02-388-0019	Stop Ass'y., Incl:	119	904-01-010-1620	Washer
76	928-01-041-4123	Spring	120	424-02-111-0008	Stud
77	931-01-021-4099	Knob	121	904-03-010-6676	Spring Washer
78	901-01-060-0649	5/16-18 X 1" H.H.S.	122	904-01-030-1650	Washer
79	904-01-010-1620	Washer	123	424-02-107-0002	Hub
80	902-01-161-7838	3/4"-16 Slot Nut	124	901-04-080-0115	5/16-18 X 1-1/4" Hdls. S.S.
81	904-01-031-5749	Spec. Washer	125	931-01-072-0453	Handle
82	424-01-111-0002	Stud	*	424-02-355-0015	Guide Ass'y., Const. of:
83	424-02-111-0010	Stud	126	424-02-004-0015	Lever
84	920-04-011-8088	Bearing (Early Model - SEE B)	127	424-02-071-0012	Pin
84	424-02-080-0001	Bearing (Current Model - SEE B)	128	424-02-355-0013	Guide Ass'y., Incl:
85	901-02-010-0569	#8-32 X 5/16" R.H.S.	129	902-01-200-9847	Special Hex Nut
86	931-02-011-3537	Knob	130	931-01-021-4099	Knob
87	424-02-112-0011	Screw	131	928-01-041-5310	Spring
88	424-02-027-0014	Outer Clamp	132	904-01-010-1620	Washer
89	424-02-027-0011	Inner Clamp	133	901-01-060-0609	5/16-18 X 1-1/2" H.H.S.
90	951-01-021-7018	R.S. Pointer	134	904-01-010-1620	Washer
91	901-04-150-0202	1/4-20 X 1/2" S.S.S.	135	33-593	Comp. Guard, Incl:
92	424-03-016-0002	Rubber Bumper	136	422-02-016-0001	Bumper
93	904-02-010-1703	5/16" L.W.	137	901-06-450-2250	#4 X 3/16" Dr. Scr.
94	902-01-010-1206	5/16"-24 Hex Nut	138	Nameplate	By Request Only
95	424-02-057-0003	Roller Hd. (Early Model -SEE B)	139	960-04-012-0031	Caution Plate
95	424-02-057-0004	Roller Hd. (Current Model - SEE B)	140	901-04-260-1505	1/4-20 X 1/2" Thumb Screw
96	424-02-111-0009	Stud	141	424-02-408-0015	Kick Back Rod, Incl:
97	905-05-040-2106	1/8 X 1-1/4" Cotter Pin	142	424-01-071-0015	Pin
98	927-01-100-2606	Hi-Pro Key	143	424-04-047-0002	Finger
99	931-01-072-0453	Handle	144	904-15-062-0269	Retaining Ring
100	424-02-111-0012	Stud	145	424-02-026-0001	Dust Chute
101	424-02-027-0004	Clamp	146	424-01-371-0016	Brkt. Shoe w/Stud
102	901-01-060-5784	1/4-20 X 1-1/2" H.H.S.	147	928-01-101-8899	Spring
103	904-01-010-1614	Washer	148	905-01-010-2717	Pin
104	424-02-102-0004	Yoke (Early Model - SEE B)	149	424-01-111-0004	Handle
104	424-02-102-0005	Yoke (Current Model - SEE B)	150	931-01-020-3606	Knob
105	424-01-072-0002	Trunnion Cover	151	424-02-111-0004	Stud for Guard
106	901-02-160-3729	#8-32 X 1/2" Pan. H.H.S.	152	424-02-103-0001	Flange
107	951-02-011-8281	Dial	153	33-197	12" Blade
108	901-06-450-2252	#2 X 3/16" Drive Screw	154	902-01-201-2567	Arbor Nut
109	424-02-095-0005	Front Trunnion	155	904-03-050-1752	5/16" Lockwasher, Early Models Only
110	901-03-010-0770	S.H.S.			
111	424-02-071-0018	Pin	*	33-594	Leaf Guard, Const. of:
112	901-03-010-0753	1/2-13 X 1-1/4" S.H.S.	156	901-09-011-2455	Extension Screw
113	424-02-071-0013	Pin	157	902-01-120-1034	1/4"-20 Hex Nut
114	901-02-160-3729	#8-32 X 1/4" Pan H.S.	158	904-02-020-1702	1/4" L.W.
115	951-01-021-7017	Pointer	159	424-02-054-0005	Leaf Guard
116	931-01-132-0475	Knob	160	1087837	Spacer
117	902-10-010-2956	Pal Nut	161	901-01-060-9595	1/4-20 X 3" H.H.S.
118	424-02-017-0008	Thread Bushing			

\* Not Shown Assembled

B - A bearing, yoke, roller head and guide change was incorporated into units starting with Ser. #IM-7800, early bearings had convex outer races. Current bearings have concave races.



# Replacement Parts

Ref. No.	Part No.	Description	Ref. No.	Part No.	Description
162	424-02-112-0010	Screw	194	424-02-079-0007	Special Retainer
163	424-02-074-0002	Plug	195	905-04-091-7956	Shear Pin
164	928-01-201-8869	Spring	196	424-02-108-0013	Rod
165	424-02-031-0025	Cover	197	904-10-991-2051	Collar, Incl:
166	901-01-060-0609	5/16-18 X 1-1/2" H. H.S.	198	901-04-150-0208	1/4-20 X 1/4" S.S.S.
167	424-02-005-0008	Column Base	199	904-07-010-5567	Fiber Washer
168	901-01-060-0616	1/2-13 X 1-1/2" H.H.S.	200	424-02-017-0003	Bushing
169	904-02-020-1705	1/2" L.W.	201	905-01-010-2732	5/32 X 1" Roll Pin
*	424-02-311-0002	Tbl. Brd. Ass'y., Const. of:	202	424-02-051-0008	Gear (SEE A)
170	424-02-011-0018	Front Board	203	424-02-013-0001	Gear Box
171	424-02-011-0007	Board	204	920-52-010-5323	Bearing
172	424-02-011-0008	Board	205	424-02-051-0008	Gear (SEE A)
173	424-02-011-0009	Board	206	905-01-010-2732	5/32 X 1" Roll Pin
174	424-02-011-0010	Board	207	902-01-161-7837	Slot. Nut
175	424-02-011-0011	Fence	208	905-01-010-5073	3/32 X 9/16" Roll Pin
176	901-02-010-0536	1/4-20 X 1-3/4" R.H.S.	209	1086740	Str. Box Cover
177	904-01-010-1614	Washer	210	0908460	#8-32 X 3/4" Pan Hd. Scr.
178	424-01-327-0005	Clamp Pad - R.H.	211	424-02-012-0006	Wrench
179	424-01-327-0006	Clamp Pad - L.H.	212	1534	1/8" Wrench (Early Model Only)
180	901-02-030-0406	1/4-20 X 3/4" Flat Hd. Scr.	213	955-01-030-1489	Arb. Nut Wrench (Early Model Only)
181	424-01-112-0001	Leveling Screw	214	955-01-040-1485	1/2" Hex Wrench
182	902-10-010-2956	Pal Nut	215	1087708	Arb. Nut Wrench (Current Model)
183	424-02-004-0013	Bar	*	50-104	Leg Ass'y., Const. of:
184	424-02-408-0009	Rod Ass'y.	217	901-01-060-0607	5/16-18 X 3/4" H.H.S.
185	931-02-011-9037	Handle	218	904-01-010-1620	Washer
186	905-01-010-2720	1/4 X 1" Roll Pin	219	424-02-366-0005	Leg Ass'y.
187	424-02-089-0009	Support	220	902-01-010-1300	5/16"-18 Hex Nut
188	901-01-060-0601	1/4-20 X 3/8" H.H.S.	221	904-02-010-1703	5/16" L.W.
189	424-02-305-0016	Base			
190	424-02-303-0008	Crank Ass'y., Incl:	*	Not Shown Assembled	
191	901-04-150-0208	1/4-20 X 1/4" S. S. S. (Early Models Only)			
192	1086395	Handle			
193	422-04-071-5002	Pin			

A - When replacing either one of the old style metal elevating gears it will be necessary to replace both gears, Ref. 202 and Ref. 205 now made of Delrin Plastic, as both gears must be of the same material.