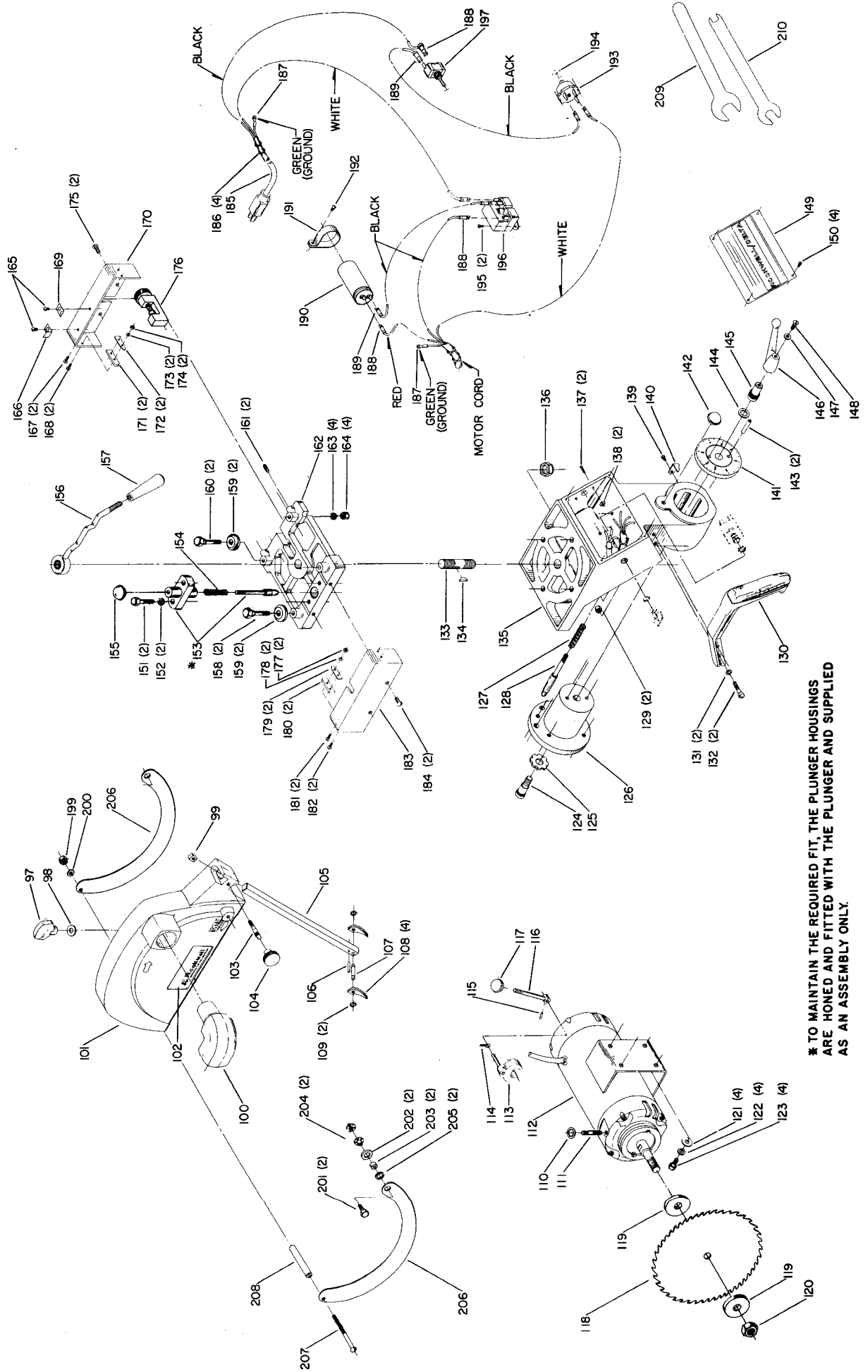


# Replacement Parts

Ref. No.	Part No.	Description	Ref. No.	Part No.	Description
1	902-03-000-2953	Speed Nut	*	1087711	Clamp Rod Assembly, Const. of:
2	424-08-089-0001	Support Arm	56	424-08-108-0006	Clamp Rod
3	438-01-004-0015	Cable Clamp	57	1086000	Spacer
4	901-05-430-3026	#8 X 3/4 Truss Hd. Self Tap. Scr.	58	1087526	Knob
5	1085820	Clamp	59	904-07-010-5552	5/16 X 3/4 X 1/16" Washer
6	424-08-108-0002	Rod	60	905-01-010-2721	1/8 X 7/8" Roll Pin
7	1086893	Knob	61	424-01-327-0006	Clamp - LH Rear
8	424-08-388-0002	Plunger & Housing, Incl:	62	424-01-027-0002	Clamp - LH Front
9	905-01-011-9310	5/64 X 3/16" Roll Pin	63	1085998	Table Level - LH
10	928-01-041-5310	Spring	64	1086005	Table Base
11	931-01-021-4099	Knob	65	424-08-333-0002	Crank Ass'y., Incl:
12	902-01-010-1300	5/16"-18 Hex Nut	66	901-04-150-0206	5/16-18 X 5/16" Soc. Set Scr.
13	905-01-010-6731	5/64 X 1/2" Roll Pin	67	904-10-991-2051	Set Collar, Incl:
14	901-04-170-9435	1/4-20 X 1-1/2" Soc. Set Scr.	68	901-04-150-0208	1/4-20 X 1/4" Soc. Set Scr.
15	951-01-010-7802	Pointer	69	424-08-108-0005	Rod
16	901-02-010-0502	1/4-20 X 1/4" Rd. Hd. Scr.	70	920-76-030-7221	Thrust Washer
17	1086165	Rip Scale	71	905-01-010-6714	5/32 X 1-1/4" Roll Pin
18	901-02-010-0558	#8-32 X 1/4" Rd. Hd. Scr.	72	424-02-051-0008	Gear
19	424-03-074-0001	Plug	73	424-08-013-0002	Gear Box
20	901-06-651-7356	#4-40 X 1/4" Rd.Hd. Self Tap. Scr.	74	920-52-010-5323	Thrust Bearing
21	951-02-011-8272	Miter Scale	75	424-08-112-0004	Elevating Screw
22	1087416	End Plate	76	424-02-017-0003	Bushing
23	1085805	Nameplate	77	920-76-030-7221	Thrust Washer
24	901-02-050-0715	1/4-20 X 1/2" Fil. Hd. Scr.	78	424-02-051-0008	Gear
25	1087416	End Plate	79	902-01-161-7837	3/8"-16 Slotted Nut
26	904-01-010-1604	5/16 X 3/4 X .065 Washer	80	905-01-010-2732	5/32 X 1" Roll Pin
27	901-03-010-0762	5/16-18 X 5/8" Soc. Hd. Scr.	81	905-01-010-5073	3/32 X 9/16" Roll Pin
28	902-01-210-1036	3/4"-16 Esna Lock Nut	82	424-08-011-0008	Fence
29	904-01-031-5749	49/64 X 15/16 X 11 Ga. Stl. Was.	*	424-08-311-0001	Board Set, Const. of:
30	1085821	King Pin	83	424-08-011-0006	4-3/16 X 31-31/32" Board
31	424-08-355-0008	Track	84	424-08-011-0007	6-7/8 X 31-31/32" Board
32	424-01-031-0015	Dust Cover	85	424-08-011-0005	Front Board
33	424-08-030-0002	Column	86	901-02-010-0536	1/4-20 X 1-3/4" Rd. Hd. Scr.
34	904-02-020-1704	3/8" Split Lockwasher	87	904-01-010-1614	9/32 X 5/8 X 1/16" Washer
35	901-01-060-0642	3/8-16 X 1" Hex Hd. Scr.		50-109	Type #4 Stl. St., Const. of:
36	424-01-004-0007	Column Key	88	1086901	Corner Support
37	901-02-050-0715	1/4-20 X 1/2" Fil. Hd. Scr.	89	436-02-066-0019	Leg
38	901-02-010-0593	#10-24 X 3/8" Binding Hd. Scr.	90	901-02-030-5720	5/16-18 X 5/8" Hex Hd. Cap Scr.
39	424-01-052-0001	Gib	91	902-01-010-1300	5/16"-18 Hex Nut
40	904-02-020-1704	3/8" Split Lockwasher	92	1086899	Tie Bar
41	901-01-060-0679	3/8-24 X 2" Hex Hd. Scr.	93	1087206	Tie Bar
42	902-01-020-1270	3/8"-24 Hex Jam Nut	94	901-11-020-0891	3/8-16 X 1" Carriage Bolt
43	902-01-120-1034	1/4"-20 Hex Nut	95	904-01-010-1605	3/8 X 7/8 X 1/16" Washer
44	901-04-121-3616	1/4-20 X 1-1/2" Hdls. Set	96	902-02-040-1307	3/8"-16 Sq. Nut
45	424-01-005-0008	Column Base			
46	901-01-060-3102	3/8-16 X 1-3/4" Hex Hd. Scr.	*	Not Shown Assembled	
47	904-02-020-1704	3/8" Split Lockwasher			
48	901-11-020-0834	5/16-18 X 3/4" Carriage Bolt			
49	904-01-010-1604	5/16 X 3/4 X 1/16" Washer			
50	424-01-027-0003	Clamp - RH Front			
51	424-01-327-0005	Clamp - RH Rear			
52	904-02-010-1703	5/16" Split Lockwasher			
53	902-01-010-1300	5/16"-18 Hex Nut			
54	1085997	Table Level - RH			
55	905-01-010-2729	3/16 X 1/2" Roll Pin			



\* TO MAINTAIN THE REQUIRED FIT, THE PLUNGER HOUSINGS ARE HONED AND FITTED WITH THE PLUNGER AND SUPPLIED AS AN ASSEMBLY ONLY.

# Replacement Parts

Ref. No.	Part No.	Description	Ref. No.	Part No.	Description
97	931-01-132-0475	Knob	156	424-08-327-0002	Clamp Assembly
98	904-01-010-1605	3/8 X 7/8 X 1/16" Washer	157	1086893	Clamp Knob
99	424-08-001-0001	Dust Chute	158	424-01-111-0002	Bearing Stud
100	424-02-354-0022	Guard Ass'y., Incl:	159	920-04-011-8088	Bearing
101	902-02-040-1306	1/4"-20 Sq. Nut	160	424-01-111-0001	Eccentric Bearing Stud
102	Nameplate	By Request Only	161	901-04-150-0202	1/4-20 X 1/2" Soc. Set Scr.
103	424-02-112-0009	Screw	162	424-01-057-0001	Roller Head
104	931-02-151-6361	Knob	163	904-02-010-1703	5/16" Lockwasher
105	424-08-408-0001	Anti-Kickback Ass'y., Incl:	164	902-01-010-1206	5/16"-24 Hex Nut
106	905-01-010-2704	1/8 X 3/4" Roll Pin	**	424-08-331-0012	Bearing Cover Ass'y., RH Const. of:
107	424-08-071-0001	Pin	165	901-02-010-0558	#8-32 X 1/4" Rd. Hd. Scr.
108	424-04-047-0002	Finger	166	951-01-021-7014	"INRIP" Pointer
109	904-15-062-0269	Retaining Ring	167	901-06-130-3003	#6 X 3/8" Sheet Metal Screw
110	904-03-050-1752	5/16" Int. Tooth Lockwasher	168	901-02-162-0766	#6 X 32 X 3/8" Pan. Hd. Scr.
111	424-02-111-0004	Stud	169	951-01-021-7015	"OUTRIP" Pointer
112	1225049	Motor, Incl:	170	424-08-031-0003	RH Bearing Cover
113	424-01-371-0016	Brake Show w/Stud	171	424-01-113-0001	Felt Wiper
114	928-01-101-8899	Spring	172	424-01-079-0001	Holding Strip
115	905-01-010-2717	Pin	173	904-01-011-5747	#6 Washer
116	424-01-111-0004	Handle	174	902-01-611-7840	#6-32" Hex Nut
117	931-01-020-3606	Knob	175	901-02-010-0509	1/4-20 X 1/2" Rd. Hd. Scr.
118	33-247	10" Comb. Blade	176	424-01-388-0002	Rip Lock
119	424-01-103-0001	Flange	**	424-08-331-0006	Bearing Cover Ass'y., LH Const. of:
120	902-01-201-8563	Arbor Nut	177	902-01-611-7840	#6-32 Hex Nut
121	904-01-010-1605	3/8 X 7/8 X 1/16" Washer	178	904-01-011-5747	#6 Washer
122	904-02-010-1703	5/16" Split Lockwasher	179	424-01-079-0001	Holding Strip
123	424-08-112-0002	Special Screw	180	424-01-113-0001	Felt Wiper
124	424-08-111-0001	Stud	181	901-06-130-3003	#6 X 3/8" Sheet Metal Scr.
125	424-08-079-0001	Special Washer	182	901-02-162-0766	#6-32 X 3/8" Pan. Hd. Scr.
126	424-08-095-0001	Trunnion	183	424-01-031-0003	LH Bearing Cover
127	928-01-041-4123	Spring	184	901-02-010-0509	1/4"-20 X 1/2" Rd. Hd. Scr.
128	424-08-071-0002	Pin	185	438-01-302-0252	Power Cord
129	902-01-120-1034	1/4"-20 Hex Nut	186	904-15-221-2671	Hog Ring
130	1087424	Handle	187	438-01-018-0006	Terminal
131	904-02-020-1702	1/4" Split Lockwasher	188	438-01-018-0026	Terminal
132	901-02-050-0725	1/4-20 X 1" Fil. Hd. Scr.	187	438-01-320-0056	Jumper Ass'y.
133	424-08-111-0002	Stud	190	438-01-029-0002	Capacitor
134	927-01-010-2607	#3 Woodruff Key	191	438-01-004-0052	Clamp
135	424-08-102-0003	Yoke	192	901-02-010-0567	#6-32 X 1/4" Rd. Hd. Scr.
136	902-01-210-1036	3/4"-16 Esna Lock Nut	193	1086332	Overload Switch
137	901-02-011-8972	#6-32 X 1-1/4" Rd. Hd. Scr.	194	1087506	Felt Washer
138	902-02-040-1301	#6-32 Sq. Nut	195	901-06-110-3000	#6 X 1/4" Self Tap Scr.
139	901-02-010-0551	#10-32 X 1/4" Rd. Hd. Scr.	196	1086333	Relay
140	951-01-021-7012	Pointer	197	438-01-017-0079	Switch
141	424-08-327-0007	Clamp Washer Assembly	198	424-01-014-0002	Switch Guard
142	931-01-021-4099	Knob	**	33-448	Retractable Leaf Guard, Const. of:
143	905-02-040-6846	1/4 X 1" Groove Pin-Type #4	199	902-01-120-1034	1/4"-20 Hex Nut
144	904-01-031-2905	33/64 X 7/8 X 1/16" Washer	200	904-02-020-1702	1/4" Split Lockwasher
145	432-01-027-0001	Clamp	201	901-01-060-0626	1/4-20 X 3/4" Hex Hd. Cap Scr.
146	931-04-010-3635	Handle	202	904-07-010-5567	Fibre Washer
147	904-01-010-1603	1/4 X 9/16 X 3/64" Washer	203	422-17-104-0001	Bushing (Nylon)
148	901-02-010-0509	1/4-20 X 1/2" Rd. Hd. Scr.	204	902-06-021-5471	Tee Nut
149	1088280	Nameplate	205	904-01-010-1636	17/32 X 11/16" X .095 Washer
150	901-02-010-0567	#6-32 X 1/4" Rd. Hd. Scr.	206	1087352	Guard
151	901-01-060-0649	5/16-18 X 1" Hex Hd. Scr.	207	901-02-010-0923	1/4-20 X 3" Rd. Hd. Scr.
152	904-01-010-1620	11/32 X 11/16 X 1/16" Washer	208	1087350	Spacer
153	424-08-388-0001	Plunger & Housing, Incl:	209	955-01-030-1489	Wrench
154	928-01-041-4123	Spring	210	955-01-040-1485	Wrench
155	931-01-021-4099	Knob			

\*\* Not Shown Assembled