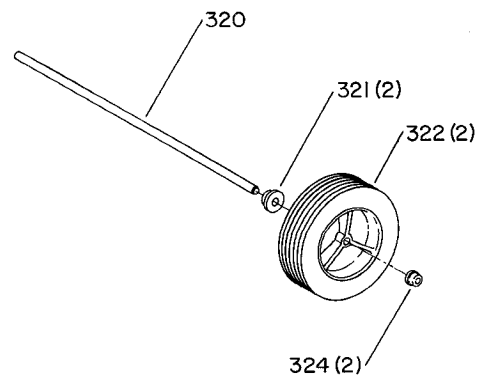
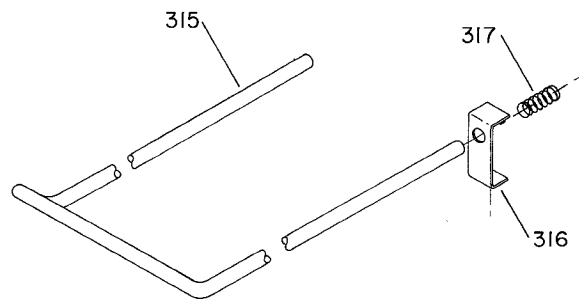
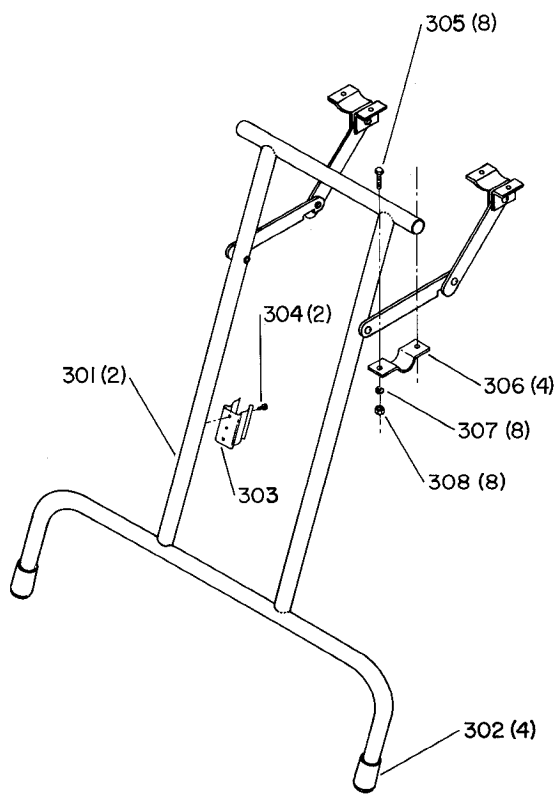
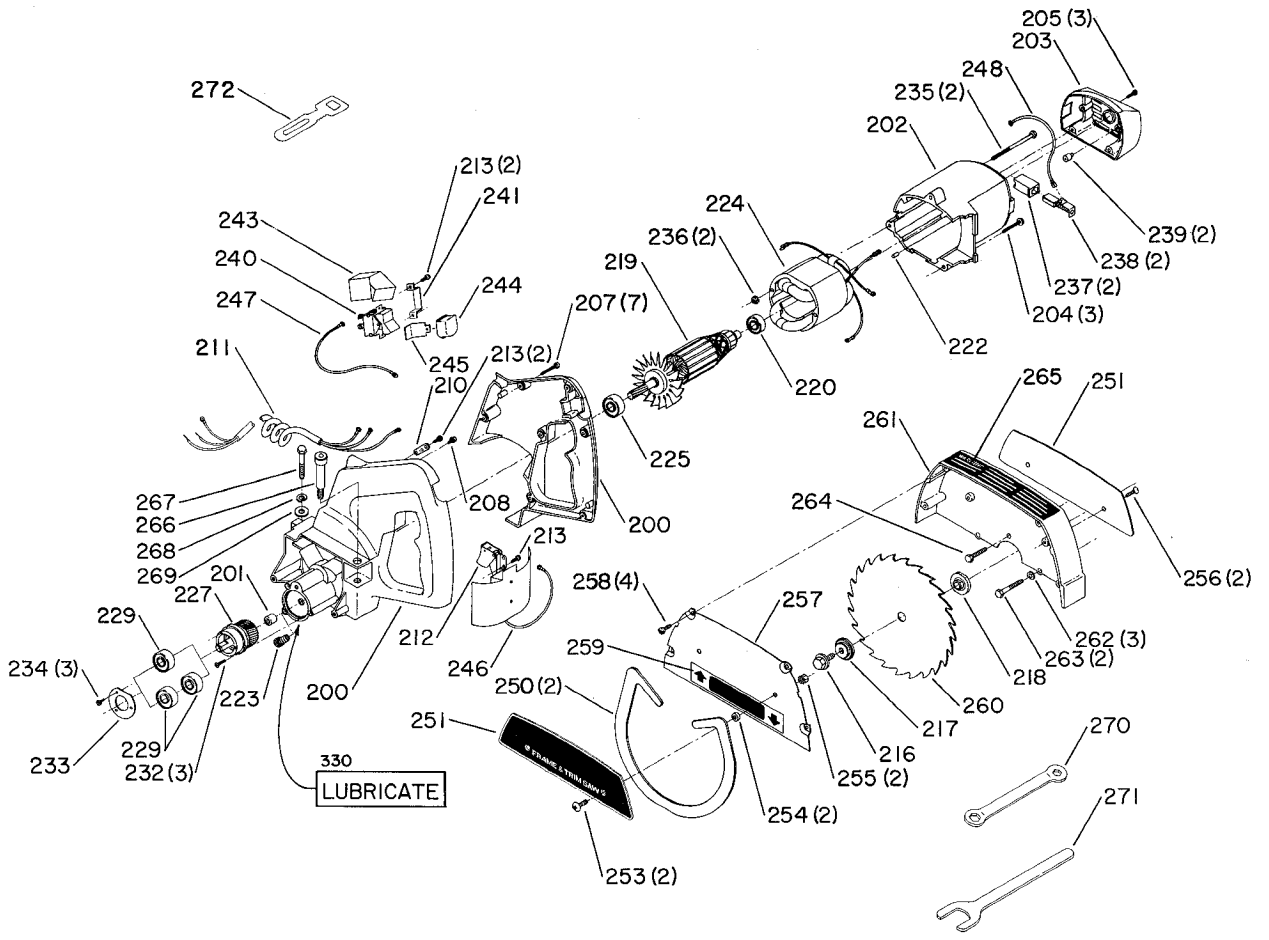


REPLACEMENT PARTS

REF. NO.	PART NO.	DESCRIPTION	REF. NO.	PART NO.	DESCRIPTION
1	422-25-091-0001	Table	100	422-25-102-0001	Carriage
2	901-03-030-8013	1/4-20 x 3/4" Flat Hd Screw	101	422-25-084-0001	Slide (See Service Note B)
3	422-25-089-0001	Support Arm	102	422-25-068-0001	Lock Knob
4	422-25-071-0010	Center Pivot Pin	103	904-01-010-1603	1/4" Washer (Early Models Only)
5	422-25-036-0001	Dust Deflector (Early Models Only, See Service Note A)	104	422-25-122-0004	Spring
6	901-05-243-1350	1/4-20 x 1 1/4" Washer Face Hex Hd Screw (Early Models Only, See Service Note A)	105	422-25-113-0001	Wiper
7	422-25-075-0003	Bevel Pointer	106	422-25-079-0020	Internal Retaining Ring (See Service Note B)
9	901-05-163-1126	#8-32 x 5/16" Phillips Hd Screw	107	901-01-060-3124	1/4-20 x 1 1/2" Hex Hd Cap Screw
10	422-25-075-0002	Miter Pointer	108	904-02-020-1702	1/4" Lockwasher
12	901-05-163-1126	#8-32 x 5/16" Phillips Hd Screw	109	904-01-010-1603	1/4" Flat Washer
15	904-01-033-1306	Washer (Early Models Only)	110	902-02-010-1315	1/4-20 Square Nut
16	422-25-074-0001	Miter Clamp Plug	111	904-01-010-1604	5/16" Washer
17	904-01-033-1306	Washer	112	904-02-010-1703	5/16" Lockwasher
18	422-25-122-0005	Spring	113	931-02-113-1172	Handknob (Early Models Only)
19	904-15-063-1301	Bowed E Ring	113A	901-01-060-0607	5/16-18 x 3/4" Hex Hd Cap Screw (Current Models Only)
20	422-25-017-0003	Miter Index Bushing	114	422-25-055-0002	Guide
21	422-25-071-0008	Plunger Pin	115	901-01-060-0623	1/4-20 x 1" Hex Hd Cap Screw
22	905-01-011-9327	3/32 x 13/16" Roll Pin	116	904-02-020-1702	1/4" Lockwasher
23	422-25-060-0006	Knob	117	904-01-010-1603	1/4" Flat Washer
25	422-25-072-0009	Miter Index Plate	118	902-02-010-1315	1/4-20 Square Nut
26	422-25-063-0001	Insert	119	422-25-017-0002	Bushing (See Service Note B)
27	901-05-943-1303	1/4-20 x 1" Washer Face Hex Hd Screw	120	422-25-113-0001	Wiper (See Service Note B)
28	904-01-010-1604	5/16" Washer	121	422-25-079-0020	Internal Retaining Ring (See Service Note B)
29	904-02-010-1703	5/16" Lockwasher	122	422-25-108-0002	Guide Rail
30	901-01-060-0607	5/16-18 x 3/4" Hex Hd Cap Screw	125	422-25-095-0002	Trunnion - Rear
31	422-17-072-0001	Plate	126	901-04-170-0213	Screw
32	901-06-121-7381	#10-24 x 1/2" Fillister Hd Screw	128	438-01-004-0074	Cord Clamp
33	422-25-108-0004	Clamp Rod	129	901-06-121-7381	#10-24 x 1/2" Phillips Hd Screw
35	422-25-111-0004	5/16" Dia. Eye Bolt	130	422-25-012-0001	Housing
36	422-25-079-0016	5/16" Radial Grip Ring	131	904-01-010-1614	9/32" Flat Washer (Early Models Only)
37	422-25-072-0008	Clamp	132	901-05-943-1303	1/4-20 x 1" Washer Face Hex Hd Screw
38	901-06-121-7381	#10-24 x 1/2" Fillister Hd Screw	133	928-01-041-8851	Spring
39	422-25-111-0003	5/16" Dia. Eye Bolt	134	422-25-088-0001	Plastic Ball
40	422-25-060-0006	Knob	135	422-25-072-0007	Bevel Scale
45	422-25-090-0001	Pivot Bracket	136	901-06-121-7381	#10-24 x 1/2" Phillips Hd Screw
46	901-01-060-0623	1/4-20 x 1" Hex Hd Cap Screw	137	904-01-010-1603	1/4" Flat Washer
47	422-25-027-0001	Clamp	140	902-01-281-7295	1/2-20 Lock Nut
49	902-01-293-1240	1/4-20 Keps Nut	142	422-25-108-0003	Bevel Clamp Rod
50	904-07-010-5569	Fiber Washer	143	905-01-010-2710	3/16 x 7/8" Roll Pin
51	902-01-020-9101	3/4-16 Hex Nut	144A	422-25-071-0007	Keyed Pivot Pin (Early Models Only, See Service Note A)
52	904-01-010-1604	5/16" Flat Washer	144B	422-25-071-0011	Pointed Head Pivot Pin (Current Models Only, See Service Note A)
53	904-02-010-1703	5/16" Lockwasher	145	904-07-043-1305	Rubber Washer
54	901-01-060-0607	5/16-18 x 3/4" Hex Hd Cap Screw	147	422-25-095-0001	Trunnion - Front
60	422-25-063-0005	Fence - Left	148	901-04-170-0213	Screw
61	422-25-089-0004	Fence Support - Left	149	422-25-104-0007	Special Washer
62	901-03-010-0750	5/16-18 x 1" Socket Hd Cap Screw	150	422-25-067-0004	Bevel Clamp Lever
63	904-02-010-1703	5/16" Lockwasher	151	961-02-033-1226	Sleeve
64	902-01-010-1300	5/16-18 Hex Nut	153	422-25-104-0010	Nylon Washer
65	422-25-055-0004	Guide	154	904-05-013-1272	Special Keyed Washer (Early Models Only, See Service Note A)
66	422-25-079-0011	Tinnerman Nut	155	902-01-283-1393	Nylok Nut
67	422-25-109-0004	Table Extension - Left	156	901-06-121-7383	#10-24 x 3/8" Fillister Hd Screw (Early Models Only)
69	422-25-043-0004	Fence - Right	157	422-25-079-0019	1/4" Push Nut
70	422-25-067-0005	Fence Link Lever	158	903-01-013-1358	1/4 x 3/4" Rivet
71	904-02-010-1726	#10 Lockwasher	160	422-25-031-0003	Cover
72	901-06-121-7383	#10-24 x 3/8" Fillister Hd Screw	161	901-06-121-7381	#10-24 x 1/2" Fillister Hd Screw
73	905-01-010-2729	3/16 x 1/2" Roll Pin	162	438-01-007-0009	Wire Nut
74	422-25-089-0003	Fence Support - Right	163	438-01-004-0069	Heyco Bushing
75	422-25-067-0002	Lever Fence Lock	164	901-06-121-7381	#10-24 x 1/2" Fillister Hd (Ground) Scr
76	1087640	5/16-18 Hex Lock Nut	165	438-01-302-0571	Power Cord
77	901-11-083-1313	5/16-18 x 1" Step Bolt	170	33-153	Stop Assembly, Incl:
78	422-25-435-0001	Link Rod	171	902-02-040-1303	1/4-20 Square Nut
79	422-25-017-0006	Roller	172	901-04-260-1527	5/16-18 x 3/4" Thumb Screw
80	418-09-104-0003	Spacer	**	422-25-753-0002	Lube Decal
81	901-01-060-0626	1/4-20 x 3/4" Hex Hd Cap Screw	**	999-01-013-1254	Rail Lubricant
82	902-01-120-1034	1/4-20 Hex Nut			NOT INCLUDED WITH BASIC MACHINE
83	901-09-073-1304	1/4-20 x 3/4" Nylon Hex Hd Screw			
84	422-25-089-0002	Support Table			
85	422-25-109-0005	Table Extension - Right			
87	901-01-060-0623	1/4-20 x 1" Hex Hd Cap Screw			
88	422-25-014-0003	Bracket			
90	901-05-943-1303	1/4-20 x 1" Washer Face Hex Hd Screw	**	422-25-408-0003	Stainless Steel Rail
91	902-01-293-1240	1/4-20 Keps Nut			
92	901-05-943-1303	1/4-20 x 1" Washer Face Hex Hd Screw	**	NOT SHOWN	
94	902-01-293-1240	1/4-20 Keps Nut			

SERVICE NOTES:

- A - Early models had plastic dust deflector (Ref. No. 5), keyed pivot pins (Ref. No. 144A), keyed washer (Ref. No. 154) and a standard hex nut. Current models replaced all of the early parts with a special pointed head pivot pin (Ref. No. 144B) which acts as a dust deflector and a Nylok nut (Ref. No. 155) which eliminates the need for the keyed washer (Ref. No. 154). All early model parts may be eliminated by adding the current pivot pin (Ref. No. 144B) and Nylok nut (Ref. No. 155) as a set.
- B - Service kit consisting of 4 wipers (Ref. 120), 4 retainers (Ref. 106 and 121), 2 bushings (Ref 119), and 2 slides (Ref. 101) is available under Part No. 422-25-628-0009. See ST-175 for additional information.



REPLACEMENT PARTS

REF. NO.	PART NO.	DESCRIPTION	REF. NO.	PART NO.	DESCRIPTION
*	422-25-131-0001	Motor Assembly, Const of:	250	422-25-054-0002	Leaf Guard
200	422-25-331-0001	Gear Hsg. w/Handle & Cover, Incl:	251	422-25-754-0006	Leaf Guard Plate w/Nameplate
201	920-23-013-1347	Inner Jackshaft Bearing	253	901-03-040-8015	1/4-20 x 1/2" Button Hd Screw
202	422-25-031-0001	Motor Housing	254	422-17-104-0002	Spacer
203	400-08-020-0002	End Cap	255	902-01-293-1240	1/4-20 Keps Nut
204	901-05-993-1344	Screw	256	901-02-321-7630	#10-32 x 1/2" Flat Hd Screw
205	400-08-112-0021	Screw	257	422-25-054-0003	Blade Guard Plate
207	901-05-183-1346	Screw	258	901-02-453-1123	#10-32 x 1/2" Pan Hd Screw
208	901-05-183-1343	Ground Screw	259	422-25-754-0005	Directional Plate
210	438-01-004-0074	Cord Clamp (Current Models Only)	260	33-157	Blade
211	438-01-302-0572	Cord Clamp (Early Models Only)	261	422-25-054-0004	Blade Guard Casting
211	438-01-302-0569	Power Cord (Current Models Only)	262	904-02-020-1702	1/4" Lockwasher
212	438-01-017-0164	Switch	263	901-01-060-3124	1/4-20 x 1 1/2" Hex Hd Cap Screw
213	901-06-121-7381	Screw (Current Models Only)	264	901-01-060-0626	1/4-20 x 3/4" Hex Hd Cap Screw
213	901-05-163-1311	Screw (Early Models Only)	265	422-25-752-0011	Warning Label
216	422-25-112-0001	Blade Bolt	266	422-25-111-0002	Stud
217	422-25-103-0002	Blade Flange	267	901-01-060-0649	5/16-18 x 1" Hex Hd Screw
218	422-25-103-0001	Blade Holder	268	904-02-010-1703	5/16" Lockwasher
219	438-02-335-0025	Armature (115V)	269	904-01-010-1604	5/16" Flat Washer
220	400-08-139-0006	Commutator End Bearing	270	422-25-101-0002	Wrench
222	400-08-074-0002	Bearing Plug	271	422-25-101-0001	Wrench
223	400-08-074-0001	Grease Plug (Early Models Only)	**	438-01-004-0068	Cord Connector (Early Models Only)
224	438-02-336-0025	Field (115V)	**	438-01-302-0570	Extension Cord (Early Models Only)
225	400-08-139-0008	Fan End Bearing	301	422-25-066-0001	Leg Assembly, Incl:
227	422-25-351-0001	Jackshaft Assy, Incl: (See Service Note C)	302	422-25-048-0001	Rubber Foot
229	400-08-139-0008	Outer Jackshaft Bearing (See Service Note C)	303	422-25-027-0003	Spring Clip
232	901-05-743-1218	Screw	304	901-06-143-1327	#6-32 x 5/16" Phillips Hd Screw
233	422-25-079-0018	Retainer	305	901-01-060-0623	1/4-20 x 1" Hex Hd Cap Screw
234	901-05-163-1348	Screw	306	422-25-027-0002	Clamp Strap
235	400-08-112-0006	Screw	307	904-02-020-1702	1/4" Lockwasher
236	902-01-293-1345	Nut	308	902-01-120-1034	1/4-20 Hex Nut
237	438-02-041-0001	Brush Holder	315	422-25-109-0003	Extension wing
238	438-02-007-0012	Brush & Spring	316	422-25-068-0002	Lock
239	438-01-011-0059	Button	317	422-25-122-0007	Spring
240	438-01-017-0165	Braking Switch	320	422-25-108-0005	Rod
241	422-25-079-0017	Switch Retainer	321	422-25-017-0005	Bushing
243	438-01-011-0058	Insulator	322	422-25-100-0001	Wheel - 7 1/4" Dia. (Early Models Only)
244	422-17-020-0001	Button	322	422-25-100-0002	Wheel - 6" Dia. (Current Models Only)
245	422-25-067-0006	Lever	330	999-02-023-1349	Gear Lube (Early Models Only)
246	438-01-320-0230	Electrical Lead (Black)	*	NOT SHOWN ASSEMBLED	
247	438-01-320-0232	Electrical Lead (Yellow)	**	NOT SHOWN	
248	438-01-320-0231	Electrical Lead (Blue)			

SERVICE NOTES:

C - Early model machines prior to Serial No. 83A67997 have one bearing. Current model machines from Serial No. 83A67997 have two bearings. The current Jackshaft Part No. 422-25-351-0001 has two bearings but will replace the early one bearing version.