

REPLACEMENT PARTS

REF NO	PART NUMBER	DESCRIPTION	REF NO	PART NUMBER	DESCRIPTION
1	422-32-050-0002	REAR BEVEL GAGE	56	901-03-010-0779	5/16-18 X 1 1/2" HEX SOC HD SCREW
2	422-32-088-0001	NUT	57	904-02-010-1703	5/16" LOCK WASHER
3	422-32-039-0002	WASHER	58	904-01-010-1620	FLAT WASHER
4	901-04-293-1395	5/16-18 X 3/4" HEX SOC SET SCREW	60	422-32-088-0003	FENCE STOP
5	901-03-010-0779	5/16-18 X 1 1/2" HEX SOC HD SCREW	61	901-04-260-1505	1/4-20 X 1/2" THUMB SCREW
6	904-02-010-1703	5/16" LOCK WASHER	62	902-01-120-1034	1/4-20 HEX NUT
7	904-01-010-1620	FLAT WASHER	63	422-32-043-0002	FENCE RIGHT
8	422-32-027-0001	BEVEL CLAMP (See Service Note A)	64	422-32-132-0002	SCALE RIGHT
9	438-01-004-0080	CABLE CLAMP	65	901-03-010-0221	1/4-20 X 2 1/2" HEX SOC HD SCREW
10	901-06-121-7381	#10-24 X 1/2" PAN HD SCREW	66	904-01-031-5652	1/4" FLAT WASHER
11	901-04-170-0270	5/16-24 X 3/8" HEX SOC SET SCREW	67	422-32-043-0001	FENCE LEFT
12	422-32-095-0002	REAR TRUNNION	68	422-32-132-0001	SCALE LEFT
13	422-32-112-0002	SHOULDER SCREW	69	901-03-010-3345	1/4-20 X 1" HEX SOC HD SCREW
14	422-32-108-0003	TRACKING ROD	70	904-01-031-5652	1/4" FLAT WASHER
15	422-32-389-0001	CABLE SUPPORT ASSY	71	902-01-010-1300	5/16-18 HEX NUT
16	904-01-010-1614	5/16" FLAT WASHER	72	901-02-010-0555	#08-32 X 3/8" ROUND HD SCREW (Current Models Only)
17	901-03-010-3345	1/4-20 X 1" HEX SOC HD SCREW	72A	901-05-163-1126	#08-32 X 5/16" PAN HD SCREW (Early Models Only)
18	422-32-112-0004	ADJUSTING SCREW	73	422-32-075-0002	NYLON SCREW
19	422-32-112-0003	SHOULDER SCREW	74	901-09-073-0001	1/4-20 X 1" HEX HD SCREW (See Service Note A)
20	901-03-010-3345	1/4-20 X 1" HEX SOC HD SCREW	75	422-32-391-0002	ROTATING TABLE, INCL:
21	904-02-020-1702	1/4" LOCK WASHER	75A	422-32-063-0002	UNTHREADED BUSHING (See Service Note C)
22	904-01-010-1614	5/16" FLAT WASHER	75B	422-32-063-0001	THREADED BUSHING (See Service Note C)
23	422-32-138-0002	KNOB	76	422-32-039-0004	SPACER
24	422-25-122-0004	SPRING	77	905-01-010-2711	1/8" X 5/8" SPRING PIN
25	422-32-139-0002	TRACKING ROD BEARING (See Service Note A)	78	422-32-108-0008	MITER LOCK ROD (Current Models Only, See Service Note D)
26	422-32-102-0001	CARRIAGE	79	422-32-068-0001	MITER LOCK TIP (Early Models Only, See Service Note A)
27	422-32-079-0001	EXT RET RING	80	422-32-108-0001	MITER LOCK ROD (Early Models Only, See Service Notes A & D)
28	422-32-017-0002	BUSHING	81	422-25-060-0006	KNOB (See Service Note D)
29	422-32-016-0001	BUMPER	82	902-01-010-1300	5/16-18 HEX NUT
30	422-32-108-0004	MOTOR GUIDE ROD	83	422-32-122-0001	SPRING (See Service Note A)
31	422-32-355-0001	MOTOR GUIDE ASSY	84	904-01-010-1606	3/8" FLAT WASHER
32	422-32-139-0003	MOTOR GUIDE BEARING (See Service Note A)	85	422-32-017-0001	BUSHING (See Service Note A)
33	422-32-014-0002	SUPPORT BRACKET (See Service Note B)	86	422-32-754-0002	DECAL RIGHT
34	904-01-010-1610	FLAT WASHER	87	901-09-073-0002	1/4-20 X 1" HEX HD SCREW (See Service Note A)
35	901-03-010-3300	#10-24 X 5/8" HEX SOC HD SCREW (Current Models Only)	88	422-32-027-0002	CLAMP (See Service Note A)
35A	901-03-010-3322	#10-24 X 1/2" HEX SOC HD SCREW (Early Models Only)	89	422-32-088-0002	NUT
36	904-01-010-1614	5/16" FLAT WASHER	90	422-32-754-0001	DECAL LEFT
37	904-02-020-1702	1/4" LOCK WASHER	91	422-32-391-0003	FIXED TABLE
38	901-03-010-0755	1/4-20 X 3/4" HEX SOC HD SCREW	92	902-01-120-1034	1/4-20 HEX NUT
39	905-01-010-2721	1/8" X 7/8" SPRING PIN			
40	422-32-108-0002	BEVEL CLAMP ROD			
41	422-32-016-0001	BUMPER			
42	422-32-017-0002	BUSHING			
43	901-02-010-0555	#08-32 X 3/8" ROUND HD SCREW (Current Models Only)			
43A	901-05-163-1126	#08-32 X 5/16" PAN HD SCREW (Early Models Only)			
44	904-01-010-1602	3/16" FLAT WASHER			
45	422-32-075-0001	POINTER			
46	901-04-170-0270	5/16-24 X 3/8" HEX SOC SET SCREW			
47	422-32-112-0002	SHOULDER SCREW			
48	422-32-095-0001	FRONT TRUNNION			
49	422-32-050-0001	FRONT BEVEL GAGE			
50	901-04-293-1395	5/16-18 X 3/4" HEX SOC SET SCREW			
51	422-32-039-0001	WASHER			
52	422-32-138-0001	KNOB			
53	422-32-754-0004	BEVEL GAGE DECAL			
54	422-32-088-0001	NUT			
55	422-32-039-0002	WASHER			

AVAILABLE AS AN ACCESSORY

*	33-052	FENCE EXTENSION ASSY, CONST OF:
100	422-32-043-0003	FENCE EXTENSION
101	901-03-010-0229	1/4-20 X 1/2" HEX SOC HD SCREW
102	904-01-010-1614	5/16" FLAT WASHER
103	901-03-010-0763	1/4-20 X 3/8" HEX SOC HD SCREW
104	904-01-010-1614	5/16" FLAT WASHER
105	422-32-104-0002	SPACER
106	904-01-010-1614	5/16" FLAT WASHER
107	901-03-010-0229	1/4-20 X 1/2" HEX SOC HD SCREW
108	422-32-063-0005	INSERT
109	902-01-120-1034	1/4-20 HEX NUT
110	422-32-043-0004	SUPPORT
111	422-32-138-0002	KNOB

* NOT SHOWN ASSEMBLED

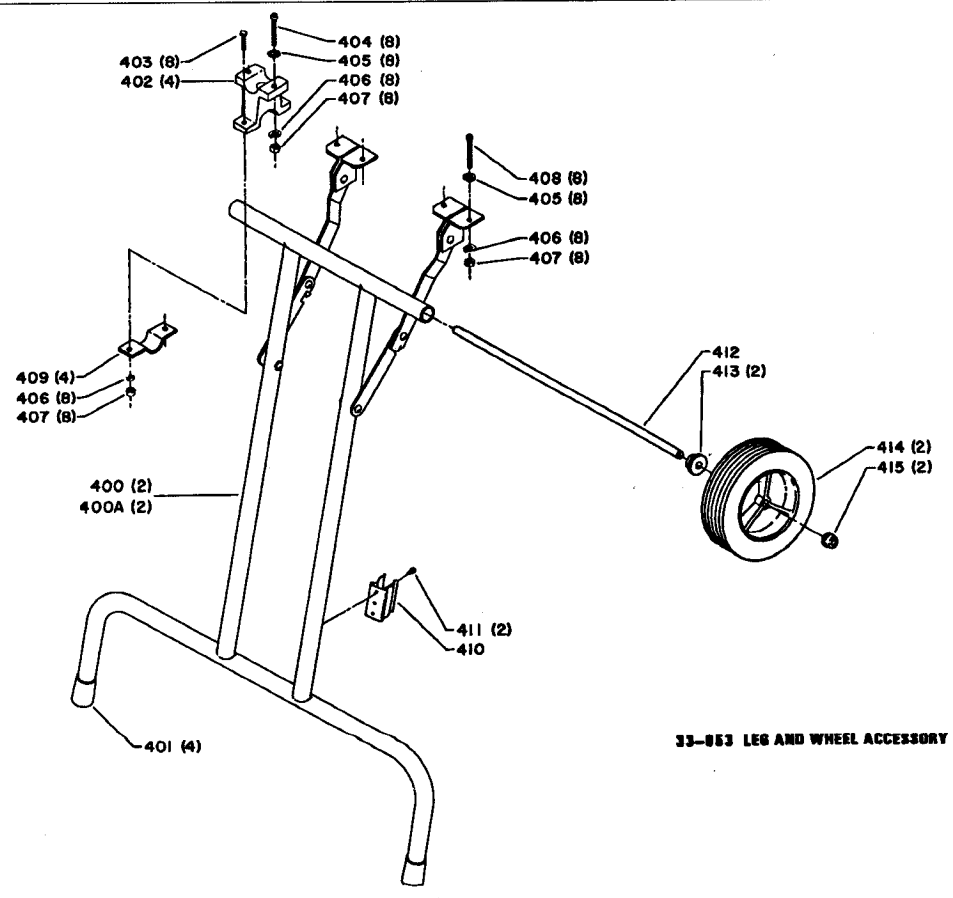
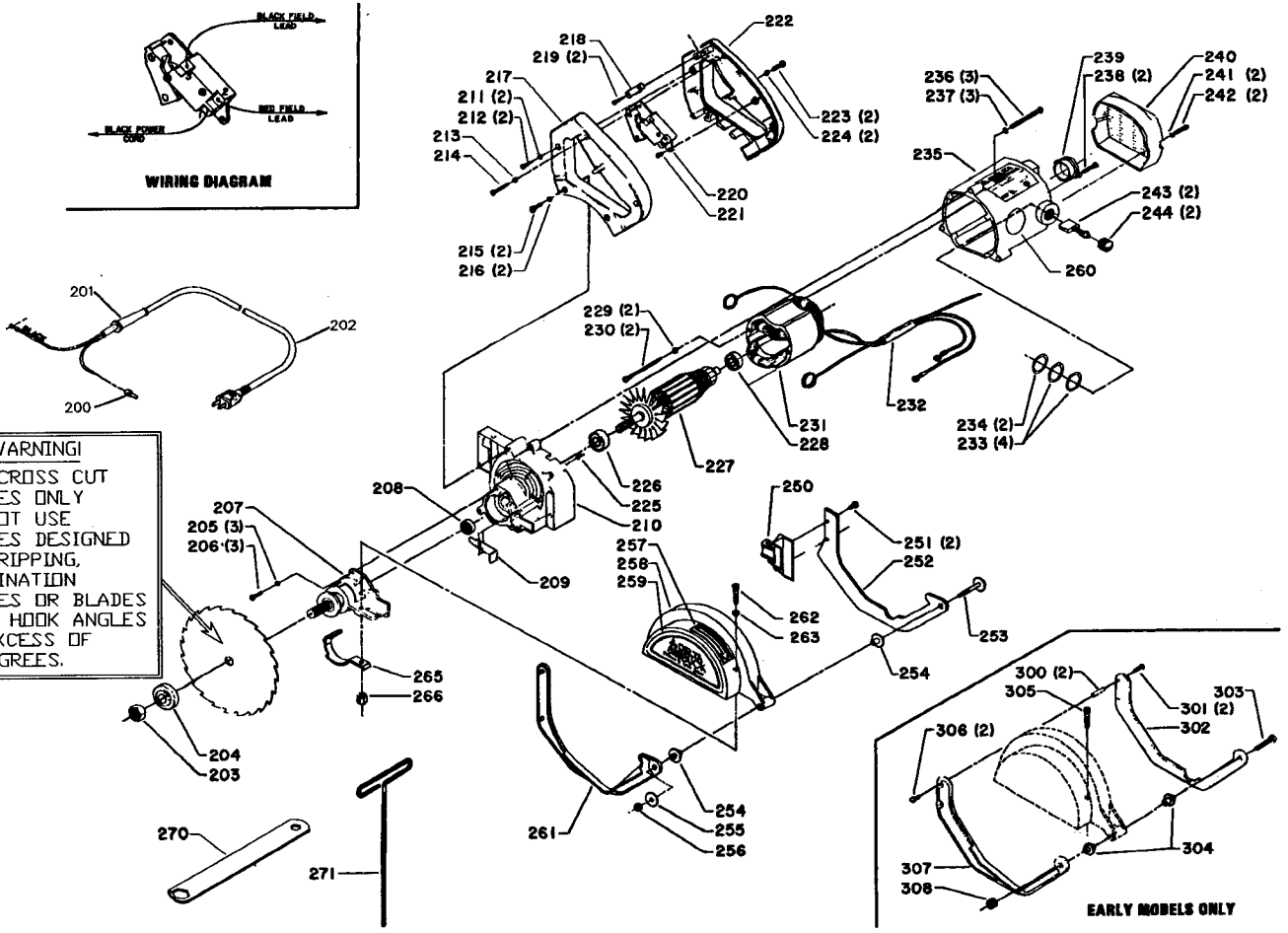
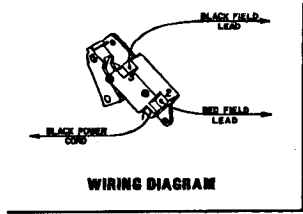
SERVICE NOTES:

A - Reference No's 8, 25, 32, 74, 79, 80, 83, 85, 87 & 88 are available under Part No 400-06-628-0006 bag assembly in sufficient quantities to rebuild entire unit.

B - Units prior to Serial No 89E69793 had aluminum motor support brackets (Part No 422-32-014-0001) which were failure prone. Starting with Serial No 89E69793, a much stronger zinc bracket (422-32-014-0002) has been used for all production. All units with aluminum brackets should be upgraded to the zinc bracket in order to avoid bracket failure and accompanying motor component damage. Zinc brackets have been identified by the addition of the letter "Z" to the end of the casting part number (i. E. 427-32-014-2001Z is made from zinc.) See Service Bulletin ST-202 for additional information.

C - Brass bushings, Ref Nos 75A & 75B must be assembled to table using 2 part epoxy adhesive.

D - Assemble rod and knob with Loctite #262 high strength adhesive or equivalent.



REPLACEMENT PARTS

REF NO	PART NUMBER	DESCRIPTION	REF NO	PART NUMBER	DESCRIPTION
*	422-32-131-0001	MOTOR ASSY, CONST OF:	*	422-32-354-0001	GUARD ASSY COMPLETE, CONST OF:
200	438-01-007-0009	WIRE NUT	250	422-32-089-0003	LOWER GUIDE SUPPORT
201	438-01-011-0070	STRAIN RELIEF	251	901-05-213-1498	#10 X 1/2" HEX WASHER HD SCREW
202	438-01-302-0629	CORD ASSY	252	422-32-054-0005	LOWER RIGHT GUARD
203	902-01-201-2567	5/8-18 HEX NUT	253	422-32-112-0006	SPECIAL SCREW
204	422-32-003-0001	ARBOR FLANGE	254	422-32-017-0006	BLADE GUARD BUSHING
205	1243520	(DIN 7980) M6.1 LOCK WASHER	255	904-01-033-1516	FLAT WASHER
206	1310163	(DIN 85) M5 X 16MM PAN HD SCREW	256	902-01-212-2409	1/4-20 LOCK NUT
207	422-32-406-0001	JACKSHAFT ASSY, INCL:	257	422-32-754-0003	ARROW DECAL
208	920-04-091-6633	BALL BEARING	258	422-32-054-0006	UPPER BLADE GUARD
209	422-32-368-0001	LOCK ASSY	259	422-32-754-0005	GUARD DECAL
210	422-32-012-0001	GEAR HOUSING	260	1346964	WARNING LABEL
211	1243525	(DIN 7980) M4.1 LOCK WASHER	261	422-32-054-0004	LOWER LEFT GUARD
212	1342444	(DIN 7513B) M4 X 16MM CHEESE HD SCREW	262	901-03-010-3345	1/4-20 X 1" HEX SOC HD SCREW (See Service Note E)
213	1243525	(DIN 7980) M4.1 LOCK WASHER	263	904-02-020-1702	1/4" LOCK WASHER (See Service Note E)
214	1342450	(DIN 7513B) M4 X 26MM CHEESE HD SCREW	265	422-32-014-0003	GUARD RETAINER (See Service Note E)
215	1310163	(DIN 85) M5 X 16MM PAN HD SCREW	266	902-01-200-9706	1/4-20 HEX NUT (See Service Note E)
216	1243520	(DIN 7980) M6.1 LOCK WASHER	270	422-39-101-0001	WRENCH
217	422-32-138-0004	MOTOR HANDLE - LEFT	271	422-32-101-0001	3/16" T HANDLE WRENCH
218	422-32-027-0003	CORD CLAMP			
219	1342444	(DIN 7513B) M4 X 16MM CHEESE HD SCREW			
220	422-32-628-0008	SWITCH ASSY			
221	1342446	(DIN 7513B) M4 X 8MM CHEESE HD SCREW			
222	422-32-138-0003	HANDLE RIGHT			
223	1310163	(DIN 85) M5 X 16MM PAN HD SCREW			
224	1243520	(DIN 7980) M6.1 LOCK WASHER			
225	422-32-074-0001	PLUG			
226	1313122	BALL BEARING			
227	438-02-335-0039	ARMATURE			
228	920-08-020-5352	BALL BEARING			
229	1243520	(DIN 7980) M6.1 LOCK WASHER			
230	1342432	(DIN 85) M5 X 65MM PAN HD SCREW			
231	438-02-336-0037	FIELD			
232	438-01-011-0067	SLEEVE			
233	438-01-011-0068	RUBBER WASHER			
234	438-01-011-0069	NYLON WASHER			
235	422-32-312-0001	MOTOR HOUSING W/BRUSH HOLDER			
236	1342451	(DIN 85) M5 X 35MM PAN HD SCREW			
237	1243520	(DIN 7980) M6.1 LOCK WASHER			
238	1342438	(DIN 7513F) M4 X 16MM FLAT HD SCREW			
239	422-32-017-0005	BEARING BUSHING			
240	422-32-031-0001	TAIL COVER			
241	1243520	(DIN 7980) M6.1 LOCK WASHER			
242	1342455	(DIN 85) M5 X 10MM PAN HD SCREW			
243	438-02-007-0022	BRUSH & SPRING			
244	422-32-020-0001	BRUSH CAP			

ITEMS (REF NO'S 300-308) LISTED BELOW FOR USE WITH EARLY MODELS ONLY

300	422-32-104-0001	SPACER
301	901-02-010-0559	#10-32 X 1/2" ROUND HD SCREW
302	422-32-054-0002	LOWER RIGHT GUARD
303	901-02-010-0513	1/4-20 X 1 1/2" ROUND HD SCREW
304	422-32-017-0004	BLADE GUARD BUSHING
305	901-03-010-0755	1/4-20 X 3/4" HEX SOC HD SCREW (See Service Note E)
306	901-02-010-0559	#10-32 X 1/2" ROUND HD SCREW
307	422-32-054-0003	LOWER LEFT GUARD
308	902-01-212-2409	1/4-20 LOCK NUT
*	33-053	LEG & WHEEL ASSY, CONST OF:
400	422-32-366-0005	LEG & FRAME ASSY (Current Models Only, See Service Note F), INCL:
400A	422-32-366-0001	LEG & FRAME ASSY (Early Models Only, See Service Note F), INCL:
401	422-25-048-0001	FOOT
402	422-25-014-0004	BRACKET
403	901-01-060-0623	1/4-20 X 1" HEX HD SCREW
404	901-03-010-0230	1/4-20 X 2" HEX SOC HD SCREW
405	904-01-031-5652	1/4" FLAT WASHER
406	904-02-020-1702	1/4" LOCK WASHER
407	902-01-120-1034	1/4-20 HEX NUT
408	901-03-010-0230	1/4-20 X 2" HEX SOC HD SCREW
409	422-25-027-0001	CLAMP STRAP
410	422-25-027-0003	SPRING CLIP
411	901-06-143-1327	#06-32 X 5/16" PAN HD SCREW
412	422-32-108-0007	ROD
413	422-25-017-0005	BUSHING
414	422-25-100-0001	WHEEL
415	422-25-020-0002	CAP

* NOT SHOWN ASSEMBLED

SERVICE NOTES:

E - Units prior to Serial No 89H69276 did not have guard retainer, Ref No 265. Those units not having this guard retainer should be retrofitted immediately by installing retrofit kit, Part No 422-32-314-0001. This kit is user installable with instructions supplied and is available at no charge by phoning Delta Product Service (1-800-223-7278). See Service Bulletin ST-205 for additional information.

F - For identification purposes, the old style legs have a foot print (on the floor) approximately 65" wide. The new style leg's foot print is approximately 57" wide.

STANDARD SAFETY EQUIPMENT

In order to promote tool safety, Delta International Machinery Corp. strictly enforces the policy of repairing or replacing any damaged or missing standard safety equipment on machines presented to Delta Authorized Service Center for service/repairs. Any product which is presented to a Delta Authorized Service Center for repairs which contains missing or damaged standard safety equipment will have that equipment repaired or replaced and the customer will be charged for any such service/repairs. Customers can avoid such charges only if the missing safety component is supplied to the service center at the time of repair.

This parts list is provided to aid in obtaining service parts. Copies of the instruction and maintenance literature can be obtained through the Delta Technical Publications Department or through your local service outlet.