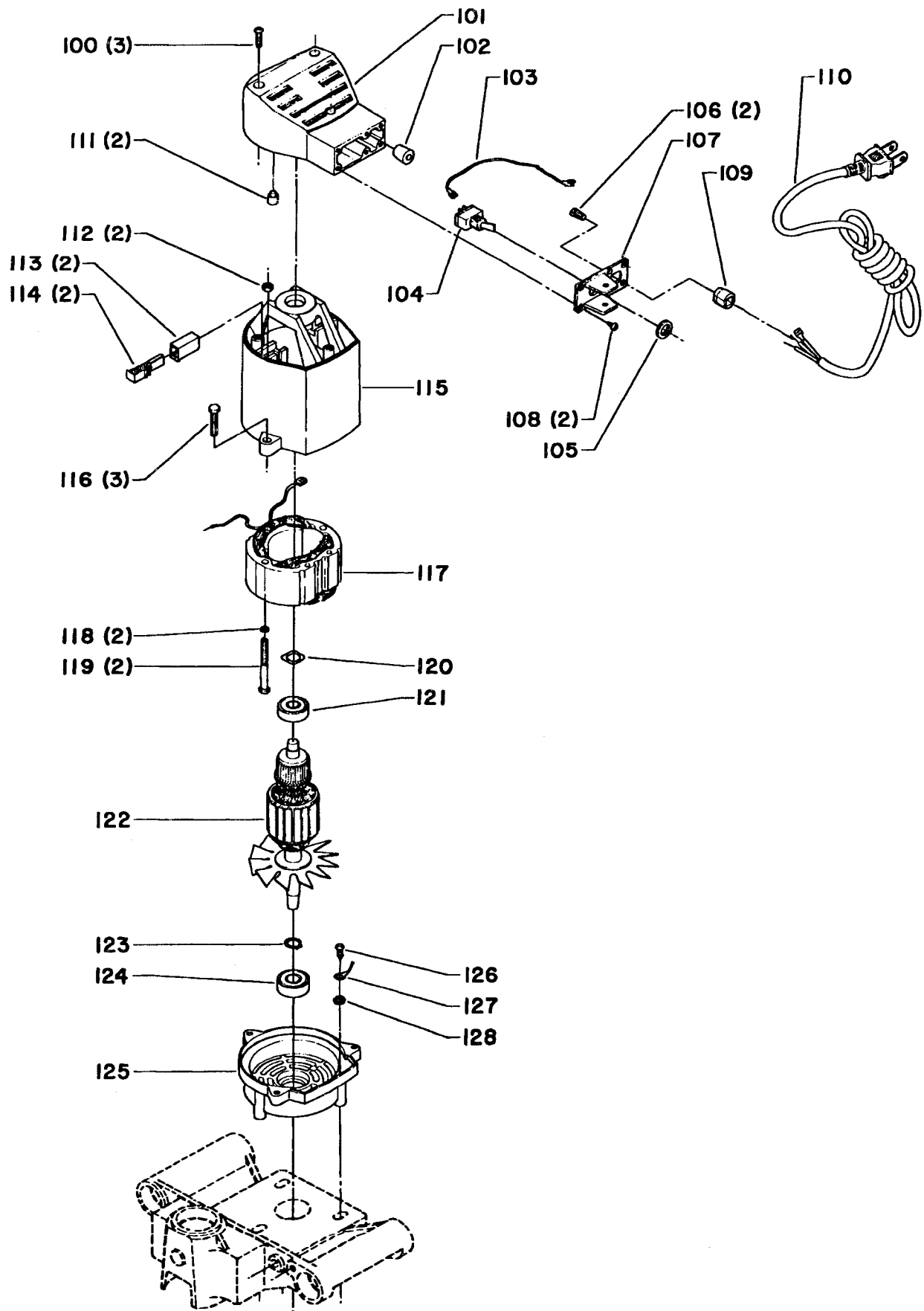


REPLACEMENT PARTS

REF NO	PART NO	DESCRIPTION	REF NO	PART NO	DESCRIPTION
*	1343061	Stock Stop Assembly, Const of:	51	1343078	Arbor
1	1343062	Handknob	52	1343079	Spacer
2	1246140	(Din 125) M6 Flat Washer	53	1313122	Bearing
3	1343063	Stock Stop Body	54	1343096	Sliding Table (Includes Bushings)
4	1343064	Guide Bar	55	1343102	(Din 934B) M6 Thin Hex Nut
5	1246140	(Din 125) M6 Flat Washer	56	1343101	M6 x 25mm Hex Hd Screw
6	1343083	Lock Knob	57	1343095	Spring
*	1343065	Dual Position Clamp, Const of:	58	1343094	Turret Stop
7	1343066	Threaded Rod	59	1343093	Collar
8	1343067	Support	60	1246140	(Din 125) M6 Flat Washer
9	1343068	Left Block	61	1246004	(Din 912) M6 x 16mm Soc Hd Screw
10	1343069	Right Block	62	1313361	(Din 6787A) M6 Ext Tooth Lockwasher
11	1343070	Bracket	63	1313122	Bearing
12	1343071	Clamp	64	1243407	(Din 471) 17e External Retaining Ring
13	1343072	Support Cover	65	32-121	Drive Belt
14	1341235	(Din 84) M4 x 12mm Cheese Hd Screw	66	1343080	Arbor Pulley (50T)
15	1343073	Block	67	1246140	(Din 125) M6 Flat Washer
16	1243497	(Din 471) 12e External Retaining Ring	68	1246004	(Din 912) M6 x 16mm Soc Hd Screw
17	1313352	Dust Elbow	69	1343105	Motor Pulley (22T)
18	1313371	Dust Spout	70	1343097	Tube
19	1243336	(Din 912) M6 x 20mm Soc Hd Screw	71	1343098	O-Ring
20	1343074	Blade Guard	72	1343099	Spacer
21	1343123	Warning Label	73	1343100	Special Bolt
22	1246154	(Din 84) M4 x 16mm Cheese Hd Screw	*	1343110	Pedal Assembly, Const. of:
23	1343075	Lower Blade Guard	74	1343119	Pedal Safety Cover
24	1343149	Handle	75	1343115	Foot Pedal
25	1243526	(Din 125) M8 Flat Washer	76	1343116	Spring
26	1343147	Table	77	1343117	Special Washer
27	1343142	Nameplate	78	1343118	(Din 472) 17i Internal Retaining Ring
28	1246153	(Din 933) M6 x 25mm Hex Hd Screw	79	1343112	Special Hex Nut
29	1243456	(Din 934) M6 Hex Nut	80	1343113	Special Screw
30	1341235	(Din 84) M4 x 12mm Cheese Hd Screw	81	1343114	Rubber Foot
31	904-01-010-1602	#10 Flat Washer	82	904-02-010-2051	1/4" Lockwasher
32	1343085	Pointer	83	1343120	Lock Knob
33	1246056	(Din 912) M6 x 12mm Soc Hd Screw	84	1343111	Foot Pedal Frame
34	1343148	Bracket	85	1343108	Cable, Incl:
35	1243526	(Din 125) M8 Flat Washer	86	1343109	Spring
36	1343150	Lock Lever Assembly	87	1243531	(Din 936) M8 Hex Nut
37	1343087	Guide	88	1343104	Boot
38	1341235	(Din 84) M4 x 12mm Cheese Hd Screw	89	1341235	(Din 84) M4 x 12mm Cheese Hd Screw
39	1343089	Fence	90	1343103	Clamp
40	1343090	Scale	91	1343139	Wrench
41	1343092	Special Pin	*	32-104	Micro-Set Table Adjuster, Const of:
42	1343141	Warning Label	92	1310161	(Din 85) M4 x 20mm Cheese Hd Screw
43	1343091	Special Nut	93	1343146	Angle Bracket
44	1343088	(Din 934) M10 Hex Nut	94	1243569	(Din 934) M4 Hex Nut
45	1343106	Base	95	1246034	(Din 933) M8 X 20mm Hex Hd Screw
46	1343107	Cable Clamp	96	1243526	(Din 125) M8 Flat Washer
47	1313180	(Din 7513B) M5 x 12mm Pan Hd Screw	97	1343145	Support Assembly
48	1343076	Blade Nut	98	1343144	Screw w/Knob
49	1343077	Special Washer			
50	32-105	Blade	*	Not Shown Assembled	



REPLACEMENT PARTS

<u>REF</u>	<u>PART NUMBER</u>	<u>DESCRIPTION</u>
*	1343121	Motor Assembly, Incl:
100	1342450	(Din 7513B) M4 x 25mm Pan Hd Screw
101	1343132	Cover
102	1343133	Dust Plug
103	1343137	Jumper Wire
104	1343135	Switch, Incl:
105	1343136	Nut
106	438-01-007-0042	Wire Nut
107	1343134	Switch Cover
108	1343140	(Din 7981B) M5 x 12mm Pan Hd Screw
109	438-01-004-0062	Strain Relief
110	1343138	Power Cord
111	1343131	Brush Holder Pad
112	1243395	(Din 934) M5 Hex Nut
113	1343130	Brush Holder
114	1343129	Brush
115	1343128	Field Housing
116	1246103	(Din 933) M5 x 25mm Hex Hd Screw
117	1343126	Field
118	1320101	(Din 6797A) M5 Star Washer
119	1310148	(Din 85) M5 x 60mm Pan Hd Screw
120	1343125	Wavy Washer
121	920-08-020-5352	Bearing
122	1343124	Armature
123	1243497	(Din 471) 12e External Retaining Ring
124	400-08-139-0006	Bearing
125	1343122	Front Housing
126	1313180	(Din 7513B) M5 x 12mm Pan Hd Screw
127	1313127	Ground Wire
128	1320101	(Din 6797A) M5 Star Washer

* NOT SHOWN ASSEMBLED

STANDARD SAFETY EQUIPMENT

In order to promote tool safety, Delta International Machinery Corp. strictly enforces the policy of repairing or replacing any damaged or missing standard safety equipment on machines presented to Delta Authorized Service Center for service/repairs. Any product which is presented to a Delta Authorized Service Center for repairs which contains missing or damaged standard safety equipment will have that equipment repaired or replaced and the customer will be charged for any such service/repairs. Customers can avoid such charges only if the missing safety component is supplied to the service center at the time of repair.

This parts list is provided to aid in obtaining service parts. Copies of the instruction and maintenance literature can be obtained through the Delta Technical Publications Department or through your local service outlet.