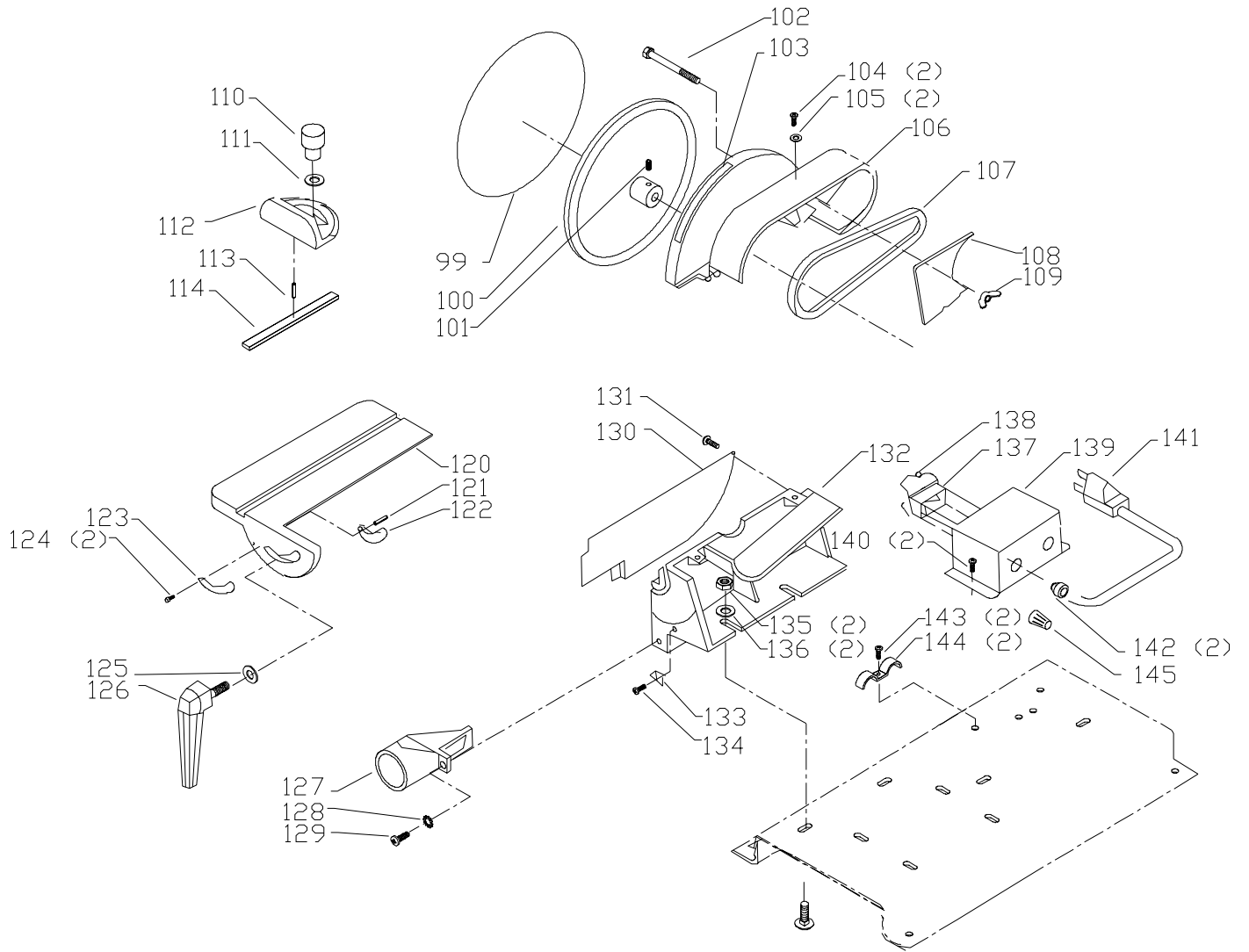


# REPLACEMENT PARTS

Ref.			Ref.		
<u>No.</u>	<u>Part No.</u>	<u>Description</u>	<u>No.</u>	<u>Part No.</u>	<u>Description</u>
1	1246096	M10 X 40MM HEX SOC HD SCREW	38	1243456	M6 HEX NUT
2	1341945	12MM FLAT WASHER	39	1345979	M6 X 45MM HEX SOC SET SCREW
3	1342574	SPRING	40	902743	ROTATION LABEL, T3
4	1342575	SPACER		1340546	ROTATION LABEL, T1, T2
5	902359	TRACKING ADJ SCREW, T3	41	902357	KNOB, T3
	1342573	TRACKING ADJ SCREW, T1, T2		1342560	KNOB, T1, T2
6	1342572	SPRING	42	902741	WARNING LABEL, T3
7	1342576	SUPPORT		1344398	WARNING LABEL, T1, T2
8	1246184	M3 X 20MM SPRING PIN	43	902933	COVER
9	1342571	IDLER SHAFT	44	902735	NAMEPLATE, T3
10	1342577	IDLER SHAFT		1344396	NAMEPLATE, T1, T2
11	1246159	M5 X 5MM HEX SOC SET SCREW	45	1342564	TABLE
12	1246008	M5 X 12MM HEX SOC SET SCREW	46	1344042	M5 X 20MM HEX SOC SET SCREW
13	1342581	DRIVE PULLEY	47	902852	CLAMP ASSY, T3
14	1342580	RETAINING PLATE		1342565	CLAMP ASSY, T1, T2
15	1341235	M4 X 12MM CHEESE HD SCREW	48	1342612	SPECIAL WASHER
16	1243525	4.1MM LOCK WASHER	49	1342562	BRACKET
17	920-04-010-7272	BALL BEARING	50	1243526	8.4MM FLAT WASHER
18	1342579	KEY	51	1246157	8.1MM LOCK WASHER
19	1342578	MAIN DRIVE SHAFT	52	1310105	M8 X 15MM HEX HD SCREW
20	422-31-139-0002	BALL BEARING	53	1246008	M5 X 12MM HEX SOC SET SCREW
21	1342614	FRAME	54	1342589	DRIVE PULLEY
22	920-04-010-7272	BALL BEARING	55	1342588	KEY
23	1342570	IDLER	56	1342608	MOTOR
24	1246140	6.4MM FLAT WASHER	57	1243496	M10 HEX NUT
25	1243520	6MM LOCK WASHER	58	1243360	10MM LOCK WASHER
26	1243379	M6 X 10MM HEX SOC HD SCREW	59	1243502	10MM FLAT WASHER
27	1246100	M10 X 20MM HEX SOC HD SCREW	60	1342603	M10 X 20MM CARRIAGE HD SCREW
28	1243360	10MM LOCK WASHER	61	n 904494	BASE, T3
29	1243502	10MM FLAT WASHER		1342604	BASE, T1, T2
30	1342568	PLATEN	62	1313227	M4 X 12MM PAN HD SCREW
31	1342567	SPECIAL NUT	63	1310210	4MM LOCK WASHER
32	920-04-010-7272	BALL BEARING	64	1246034	M8 X 20MM HEX HD SCREW
33	1342570	IDLER	65	1246157	8.1MM LOCK WASHER
34	1342566	RETAINING RING	66	1243526	8.4MM FLAT WASHER
35	1246158	M5 X 16MM HEX SOC SET SCREW	67	1342605	RUBBER FOOT
36	1342609	DRIVE WHEEL	68	1243526	8.4MM FLAT WASHER
37	OPTIONAL	SANDING BELT	69	1243398	M8 HEX NUT
			70	1243502	10MM FLAT WASHER
			71	1243360	10MM LOCK WASHER
			72	1246100	M10 X 20MM HEX SOC HD SCREW
			80	428-06-101-0003	2.5MM ALLEN WRENCH
			81	422-30-101-0002	8MM ALLEN WRENCH



# REPLACEMENT PARTS

Ref.	<u>No.</u>	<u>Part No.</u>	<u>Description</u>
	99	OPTIONAL	SANDING DISK
	100	1342583	DISK PLATE
	101	1246159	M5 X 5MM HEX SOC SET SCREW
	102	1342582	M4 X 45MM CHEESE HD SCREW
	103	902743	ROTATION LABEL, T3
		1340546	ROTATION LABEL, T1, T2
	104	1243501	M4 X 10MM CHEESE HD SCREW
	105	904-01-010-1602	3/16" FLAT WASHER
	106	1342584	PULLEY COVER
	107	1342585	V BELT
	108	1342586	COVER
	109	1342587	M4 WING NUT
	*	1342598	MITER GAGE ASSEMBLY, CONST OF:
	110	1342601	HAND KNOB
	111	904-01-010-161	1/4" FLAT WASHER
	112	1342600	MITER GAGE BODY
	113	1342607	M4 X 10MM DOWEL PIN
	114	1342599	GUIDE BAR
	120	1342592	TABLE
	121	1342593	M4 X 10MM SPRING PIN
	122	1342594	GUIDE
	123	1342595	SCALE
	124	1087794	RIVIT
	125	1243502	10MM FLAT WASHER
	126	902852	CLAMP ASSY, T3
		1342565	CLAMP ASSY, T1, T2
	127	1342597	DUST CHUTE
	128	1246067	M6 X 15MM CHEESE HD SCREW
	129	1313361	6.4MM EXT TOOTH WASHER
	130	902851	SIDE GUARD, T3
		1342591	SIDE GUARD, T1, T2
	131	1310159	M4 X 6MM PAN HD SCREW
	132	902933	SUPPORT, T3
		1342590	SUPPORT, T1, T2
	133	1342596	POINTER
	134	1243501	M4 X 10MM CHEESE HD SCREW
	135	1243496	M10 HEX NUT
	136	1243502	10MM FLAT WASHER
	137	1343759	SWITCH, INCL:
	138	400-06-068-000	SWITCH KEY
	139	1342606	SWITCH COVER
	140	1313227	M4 X 12MM PAN HD SCREW
	141	1345225	POWER CORD
	142	438-01-004-0062	HEYCO BUSHING 5/8"
	143	1313227	M4 X 12MM PAN HD SCREW
	144	1340719	CLAMP
	145	1320175	CONNECTOR
	146	1342602	M10 X 25MM CARRIAGE HD SCREW
	147	1342604	BASE
	148	902354	HARDWARE PACK
	*		NOT SHOWN ASSEMBLED

---

## STANDARD SAFETY EQUIPMENT

In order to promote tool safety, Delta Machinery strictly enforces the policy of repairing or replacing any damaged or missing standard safety equipment on machines presented to Delta Authorized Service Centers for service/repairs. Any product that is presented to a Delta Authorized Service Centers for repairs which contains missing or damaged standard safety equipment will have that equipment repaired or replaced and the customer will be charged for any such service/repairs. Customers can avoid such charges only if the missing safety component is supplied to the service center at the time of repair.

*This parts list is provided to aid in obtaining service parts. Copies of the instruction and maintenance literature can be obtained through the Delta Technical Publications Department or through your service outlet.*