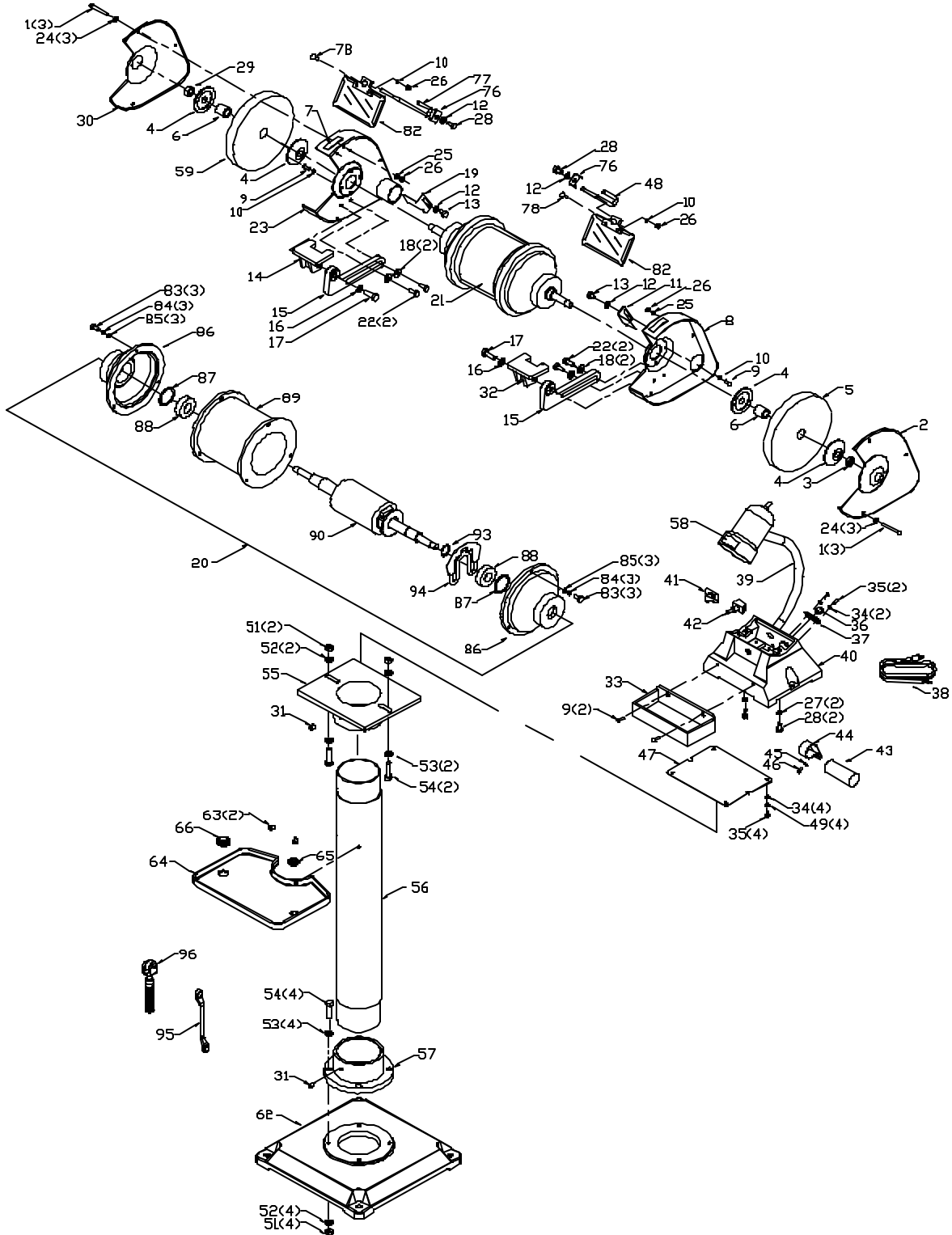




23-730 8" GRINDER

G-3I

PARTS LIST NO. 900809
Dated 02/16/2001



REPLACEMENT PARTS

Ref.			Ref.		
No.	Part No.	Description	No.	Part No.	Description
1	898206	SCREW	46	898187	SCREW
2	898212	RIGHT COVER	47	898179	BASE PLATE
3	898214	NUT	48	898230	MOUNTING ROD
4	898216	WHEEL FLANGE	49	898233	WASHER
5	898218	60 GRIT GRINDING WHEEL	51	898171	NUT
6	898217	WHEEL BUSHING	52	898170	WASHER
7	n 900834	ROTATION LABEL, T2	53	898169	WASHER
	1340546	ROTATION LABEL, T1	54	898168	BOLT
8	898219	WHEEL GUARD	55	898161	TOP PLATE
9	898199	SCREW	56	898163	COLUMN
10	898211	WASHER	57	898172	BOTTOM PLATE
11	898189	SPARK ARRESTOR	58	n 900843	WARNING LABEL, T2
12	898196	WASHER		1349968	WARNING LABEL, T1
13	898202	BOLT	59	898399	36 GRIT GRINDING WHEEL
14	898190	TOOL REST	62	898173	BASE
15	898192	ARM	63	898165	SCREW
16	898169	WASHER	64	898164	TOOL PLATE
17	898194	BOLT	65	898166	SMALL GROMMET
18	898197	WASHER	66	898167	LARGE GROMMET
19	898188	SPARK ARRESTOR	76	898231	ROD BRACKET
20	n 901242	MOTOR, T2	77	898229	MOUNTING ROD
	898200	MOTOR, T1	78	898228	BOLT
21	n 901247	LABEL, T2	82	898222	EYESHIELD
	898201	LABEL, T1	83	898796	BOLT
22	898195	BOLT	84	898797	WASHER
23	898220	WHEELGUARD	85	898798	WASHER
24	898207	WASHER	86	n 901243	BEARING HOUSING, T2
25	898208	WASHER		898799	BEARING HOUSING, T1
26	898209	NUT	87	898800	WASHER
27	898181	WASHER	88	898801	BEARING
28	898180	BOLT	89	n 901244	STATOR , T2
29	898215	NUT		898802	STATOR , T1
30	898213	LEFT COVER	90	898803	ROTOR
31	898162	SCREW	93	898806	RETAINING RING
32	898191	TOOL REST	94	898818	SWITCH
33	n 901233	WATER TRAY, T2	95	898175	WRENCH
	898198	WATER TRAY, T1	96	898176	WHEEL DRESSER
34	898232	WASHER			
35	898234	SCREW			
36	1340190	CLAMP			
37	898203	CLAMPING PLATE			
38	898205	CORDSET			
39	898177	LIGHT ASSEMBLY			
40	n 901234	BASE, T2			
	898178	BASE, T1			
41	898182	SWITCH GUARD			
42	898183	SWITCH			
43	898184	CAPACITOR			
44	898185	CLAMP			
45	898186	WASHER			

STANDARD SAFETY EQUIPMENT

In order to promote tool safety, Delta Machinery strictly enforces the policy of repairing or replacing any damaged or missing standard safety equipment on machines presented to Delta Authorized Service Centers for service/repairs. Any product which is presented to a Delta Authorized Service Centers for repairs which contains missing or damaged standard safety equipment will have that equipment repaired or replaced and the customer will be charged for any such service/repairs. Customers can avoid such charges only if the missing safety component is supplied to the service center at the time of repair.

This parts list is provided to aid in obtaining service parts. Copies of the instruction and maintenance literature can be obtained through the Delta Technical Publications Department or through your service outlet.