

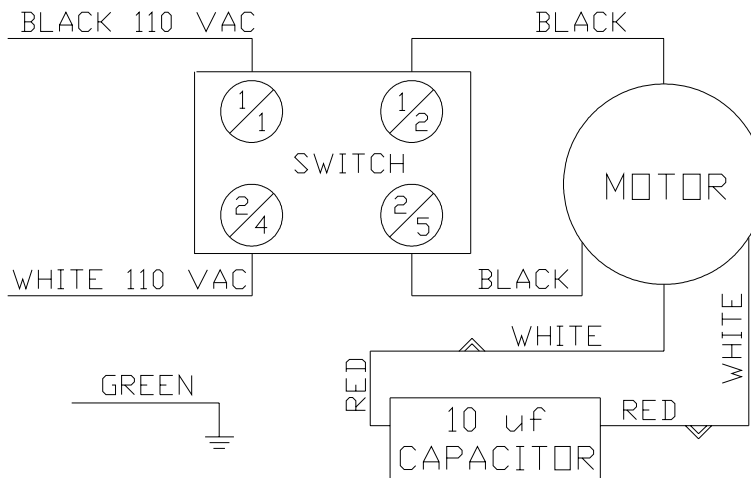
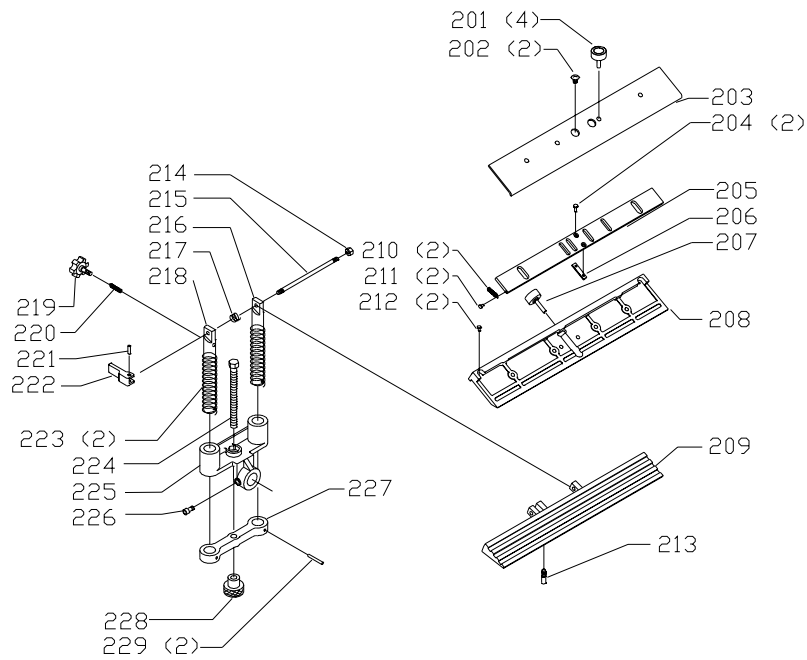
REPLACEMENT PARTS

| Ref. | No. | Part No. | Description | Ref. | No. | Part No. | Description |
|------|-----|-----------------|----------------------------------|------|-----|-----------------|-----------------------------|
| * | | 1348219 | CHISEL HOLDER ASSY, INCL.: | 58 | | 1246157 | M8.1 LOCK WASHER |
| 1 | | 1348212 | KNOB | 59 | | 1246034 | M8 X 20MM HEX HD SCREW |
| 2 | | 1348213 | PLATE | 60 | | 428-07-101-0002 | 6MM HEX WRENCH |
| 3 | | 1348214 | GUIDE | 61 | | 1348217 | WRENCH |
| 4 | n | 1348925 | M6 X 1 X 8MM PAN WASHER HD SCREW | 62 | | 1348218 | DRESSING STONE |
| 5 | | 1348215 | STOP SLIDE | 63 | | 1320005 | 10-24 X 3/8" TRUSS HD SCREW |
| 6 | | 1345979 | M6 X 45MM HEX SOC SET SCREW | 64 | | 1243501 | M4 X 10MM CHEESE HD SCREW |
| 7 | | 1348216 | SLIDE PLATE | 65 | n | A06098 | GASKET, T2 |
| 9 | | 1246081 | M6 X 40MM SPRING PIN | | | 1348189 | GASKET, T1 |
| 10 | | 1348221 | ROD EMO | 66 | n | A06099 | BASE, T2 |
| 11 | | 1348222 | BRACKET EMO | | | 1348188 | BASE, T1 |
| 12 | | 1243526 | M8.4 FLAT WASHER EMO | 67 | | 1348194 | GASKET |
| 13 | | 1310216 | M8.4 EXT TOOTH WASHER EMO | 68 | | 1348193 | SWITCH PLATE |
| 14 | | 1348223 | LOCK LEVER EMO | 69 | | 1348195 | POWER SWITCH |
| 15 | | 1348224 | KNOB EMO | 70 | | 1320003 | 10-24 X 1/4" TRUSS HD SCREW |
| 16 | | 1348225 | SPRING EMO | 71 | | 1320217 | PAD |
| 17 | | 1348171 | SCREW EMO | 72 | | 1320087 | FLAT WASHER |
| 18 | | 1348175 | SHAFT EMO | 73 | | 901-02-010-0525 | 10-24 X 1/2" ROUND HD SCREW |
| * | | 1342395 | TOOL REST ASSY, INCL.: | 74 | | 1348191 | CAPACITOR 10UF |
| 19A | | 1310216 | M8.4 EXT TOOTH WASHER | 75 | | 1348192 | CLAMP |
| 19B | | 1243526 | M8.4 FLAT WASHER | 76 | | 1320102 | M4.3 EXT TOOTH WASHER |
| 19C | | 1243530 | M8 X 30MM HEX SOC HD SCREW | 77 | | 1320005 | 10-24 X 3/8" TRUSS HD SCREW |
| 20 | | 1348220 | GUIDE | 78 | n | A06100 | COVER PLATE, T2 |
| 21A | | 1348166 | KNOB | | | 1348196 | COVER PLATE, T1 |
| 21B | | 1246140 | M6.4 FLAT WASHER | 79 | | 904-01-010-1602 | 3/16" FLAT WASHER |
| 21C | | 1348167 | SPRING | 80 | | 1320005 | 10-24 X 3/8" TRUSS HD SCREW |
| 22 | | 1342396 | ROD | 81 | | 1348187 | STRAIN RELIEF |
| 23A | | 1348171 | SCREW | 82 | | 1348190 | PLATE |
| 23B | | 1342397 | BRACKET | 83 | | 901-02-010-0525 | 10-24 X 1/2" ROUND HD SCREW |
| 23C | | 1342401 | SHAFT | 84 | | 1320101 | M5.3 EXT TOOTH WASHER |
| 24A | | 1342398 | SPRING | 85 | | 1348186 | CORD |
| 24B | | 1246028 | EXT RET RING | 86 | | 1243520 | M6.1 LOCK WASHER |
| 25A | | 1243530 | M8 X 30MM HEX SOC HD SCREW | 87 | | 1243456 | M6 HEX NUT |
| 25B | | 1342399 | ADJUSTING NUT | 88 | | 1320175 | CONNECTOR |
| 26A | | 1246147 | M3 X 14MM SPRING PIN | 89 | | 1348197 | LOCK NUT E.M.O. (NOTE A) |
| 26B | | 1342400 | STUD | 89A | | 1348198 | SPACER E.M.O. (NOTE A) |
| 27 | | 1348171 | SCREW | 90 | | 1349912 | LOCK NUT, C.M.O. (NOTE A) |
| 28 | | 1246098 | M5 X 16MM HEX SOC HD SCREW | 91 | | 23-712 | WET GRINDING WHEEL |
| 29 | | 1348177 | COVER | 92 | | 1348199 | WHEEL FLANGE |
| 30 | | 1320074 | .50-12 LEFT HAND NUT | 93 | n | A06101 | KNOB, T2 |
| 31 | | 1320201 | FLANGE | | | 1348200 | KNOB, T1 |
| 32 | | 23-713 | DRY GRINDING WHEEL | 94 | n | A06102 | WATER TRAY, T2 |
| 33 | | 1348178 | DRIVE FLANGE | | | 1348201 | WATER TRAY, T1 |
| 34 | | 1348179 | WHEEL GUARD | 95 | | 1348202 | SPLASH GUARD |
| 35 | | 1330147 | M8 X 40MM HEX SOC HD SCREW | 96 | | 1348203 | SPLASH GUARD |
| 36 | | 1348180 | M8 X 16MM SPRING PIN | 97 | | 1246098 | M5 X 16MM HEX SOC HD SCREW |
| 37 | | 902-01-120-1034 | 1/4-20 HEX NUT | 98 | | 1348204 | TRAY |
| 38 | | 1320424 | EYESHIELD | 99 | | 1246196 | EXT RET RING |
| 39 | | 1320087 | FLAT WASHER | 100 | | 422-31-139-0002 | BEARING |
| 40 | | 902-01-120-1216 | 10-24 HEX NUT | 101 | | 1348205 | SHAFT |
| 41 | | 901-02-010-0525 | 10-24 X 1/2" ROUND HD SCREW | 102 | | 1348206 | M4 X 30MM SPRING PIN |
| 42 | | 901-11-020-0821 | 1/4-20 X 3/4" CARRIAGE HD SCREW | 103 | n | A06103 | GEAR, T2 |
| 43 | | 1320426 | FRAME | | | 1348207 | GEAR, T1 |
| 44 | | 1320423 | ROD | 104 | | 1348208 | HOUSING |
| 45 | | 1320422 | BRACKET | 105 | | 1243336 | M6 X 20MM HEX SOC HD SCREW |
| 46 | | 904-02-010-1703 | 5/16" LOCK WASHER | 106 | | 1347567 | M4 X 18MM SPRING PIN |
| 47 | | 1343841 | KNOB W/STUD | 107 | n | A06104 | WORM GEAR, T2 |
| 48 | n | A06097 | MOTOR ASSY, T2, INCL; | | | 1348209 | WORM GEAR, T1 |
| | | 1348181 | MOTOR ASSY, T1, INCL; | 108 | | 1348210 | COVER |
| 49 | n | A06114 | WARNING LABEL, T2 | 109 | | 1310162 | M5 X 12MM PAN HD SCREW |
| | | 1348182 | WARNING LABEL, T1 | 110 | | 422-31-139-0002 | BEARING |
| 54 | | 1246034 | M8 X 20MM HEX HD SCREW | 111 | | 1246196 | EXT RET RING |
| 55 | | 1243526 | M8.4 FLAT WASHER | 112 | | 1348171 | SCREW |
| 56 | | 1348184 | TOOL REST | 113 | | 1342402 | TOOL CLAMP |
| 57 | | 1348185 | SUPPORT | 114 | | 1343538 | M5.1 LOCK WASHER |
| | | | | 115 | | 1343923 | M5.5 X 10MM PAN HD SCREW |
| | | | | 116 | | 1342403 | WRENCH |

* NOT SHOWN ASSEMBLED
EMO=EARLY MODELS ONLY
CMO=CURRENT MODELS

NOTE A: WHEN REPLACING REFERNCES 89 OR 89A (EARLY MODELS), REPLACE THEM WITH REFERENCE 90 (CURRENT MODELS).

AVAILABLE AS AN ACCESSORY



REPLACEMENT PARTS

Ref.

| <u>No.</u> | <u>Part No.</u> | <u>Description</u> |
|-------------------|------------------------|----------------------------------|
| * | 23-715 | PLANER/JOINTER KNIFE JIG, INCL.: |
| 201 | 1348151 | KNOB |
| 202 | 1348152 | SPECIAL SCREW |
| 203 | 1348153 | CLAMP PLATE |
| 204 | 1348155 | M2 X 6MM PAN HD SCREW |
| 205 | 1348154 | SLIDE PLATE |
| 206 | 1348156 | KEY |
| 207 | 1348161 | KNOB |
| 208 | 1348157 | SLIDE BASE |
| 209 | 1348158 | GUIDE TABLE |
| 210 | 1348160 | SPRING |
| 211 | 1310016 | 5MM DRIVE SCREW |
| 212 | 1246000 | M3 X 6MM CHEESE HD SCREW |
| 213 | 1348159 | PIN |
| 214 | 1343642 | M6 LOCK NUT |
| 215 | 1348162 | SHAFT |
| 216 | 1348163 | ROD |
| 217 | 1348164 | SPRING |
| 218 | 1348165 | ROD W/HOLE |
| 219 | 1348166 | KNOB |
| 220 | 1348167 | SPRING |
| 221 | 1246147 | M3 X 14MM SPRING PIN |
| 222 | 1348168 | LEVER |
| 223 | 1348172 | SPRING |
| 224 | 1348169 | M10 X 120MM HEX HD SCREW |
| 225 | 1348170 | BRACKET |
| 226 | 1348171 | SCREW |
| 227 | 1348173 | BEAM |
| 228 | 1348174 | KNOB |
| 229 | 1348176 | M4 X 32MM SPRING PIN |

* NOT SHOWN ASSEMBLED

STANDARD SAFETY EQUIPMENT

In order to promote tool safety, Delta Machinery strictly enforces the policy of repairing or replacing any damaged or missing standard safety equipment on machines presented to Delta Authorized Service Centers for service/repairs. Any product that is presented to a Delta Authorized Service Center for repair with damaged or missing standard safety equipment will have that equipment repaired or replaced and the customer will be charged for any such service/repairs. Customers can avoid such charges only if the missing safety component is supplied to the service center at the time of repair.

This parts list is provided to aid in obtaining service parts. Copies of the instruction and maintenance literature can be obtained through the Delta Technical Publications Department, your service outlet, or by visiting the Delta Website @ www.deltamachinery.com.