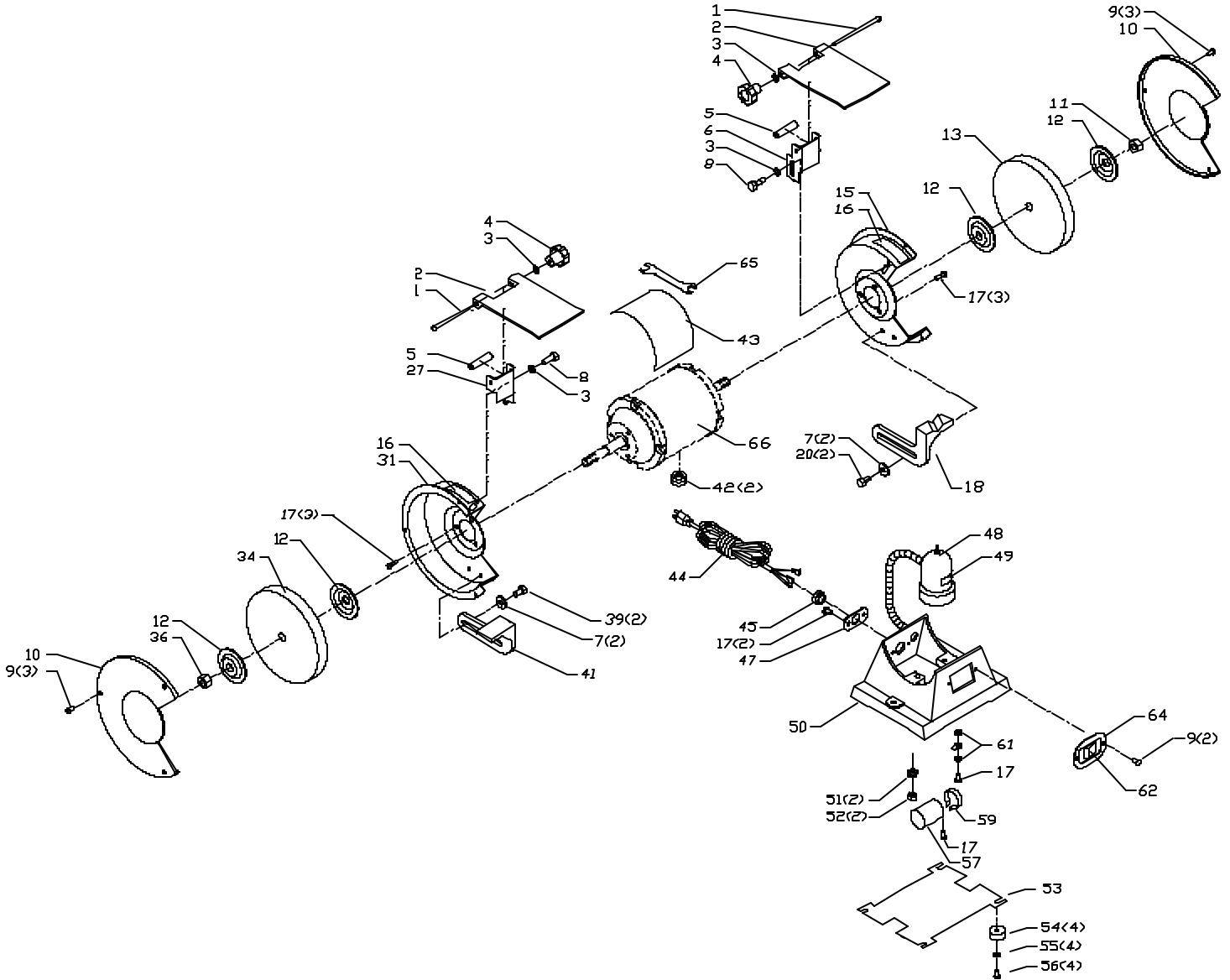




23-589
6" 1/4 HP GRINDER W/LAMP

G-6

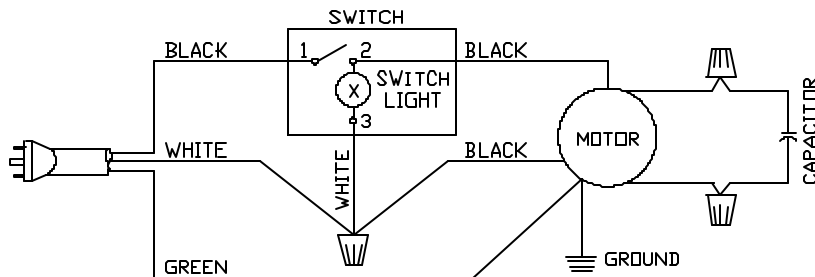
PART NO. 901909
Dated: 06/12/2001



REPLACEMENT PARTS

Ref. No.	Part No.	Description	Ref. No.	Part No.	Description
1	902581	M6 X 80MM CARRIAGE HD SCR	36	1320074	LEFT HAND NUT
2	901911	EYESHIELD	39	901-01-060-060E	HEX HD SCREW
3	1340608	WASHER-FLAT	41	1320210	TOOL REST LH
4	902582	M6 KNOB	42	1320155	GROMMET
5	902583	SPACER	43	900835	WARNING/DEC PLATE
6	902584	SPARK BREAKER-RIGHT	44	1320125	CORD
7	1320090	FLAT WASHER	45	1310057	STRAIN RELIEF
8	1340609	HEX HD SCREW	47	1320211	PLATE
9	1320003	TRUSS HD SCREW	48	1349964	LIGHT ASSY
10	1320832	COVER	49	900843	WARNING LABEL (LAMP)
11	1320075	HEX NUT	50	902589	BASE
12	1320201	FLANGE	51	904-02-020-1702	LOCK WASHER
13	23-684	6" GRIND WHEEL/60G	52	902-01-120-1034	HEX NUT
15	902585	WHEEL GUARD RH	53	902588	BASE COVER
16	900839	ROTATIONAL LABEL	54	1320217	PAD
17	1320005	TRUSS HD SCREW	55	1320087	FLAT WASHER
18	1320220	TOOL REST RH	56	901-02-010-052E	ROUND HD SCREW
20	901-01-060-060E	HEX HD SCREW	57	1343835	CAPACITOR
27	902586	SPARK BREAKER-LEFT	59	1320160	CLAMP
31	902587	WHEEL GUARD LH	61	1320101	WASHER
34	23-683	6" GRIND WHEEL/36G	62	1320151	SWITCH
			64	1320219	PLATE
			65	902590	WRENCH
			66	23-589	MOTOR NOT AVAILABLE

MODEL 23-589 WIRING DIAGRAM



STANDARD SAFETY EQUIPMENT

In order to promote tool safety, Delta Machinery strictly enforces the policy of repairing or replacing any damaged or missing standard safety equipment on machines presented to Delta Authorized Service Centers for service/repairs. Any product that is presented to a Delta Authorized Service Centers for repairs which contains missing or damaged standard safety equipment will have that equipment repaired or replaced and the customer will be charged for any such service/repairs. Customers can avoid such charges only if the missing safety component is supplied to the service center at the time of repair.

This parts list is provided to aid in obtaining service parts. Copies of the instruction and maintenance literature can be obtained through the Delta Technical Publications Department or through your service outlet.