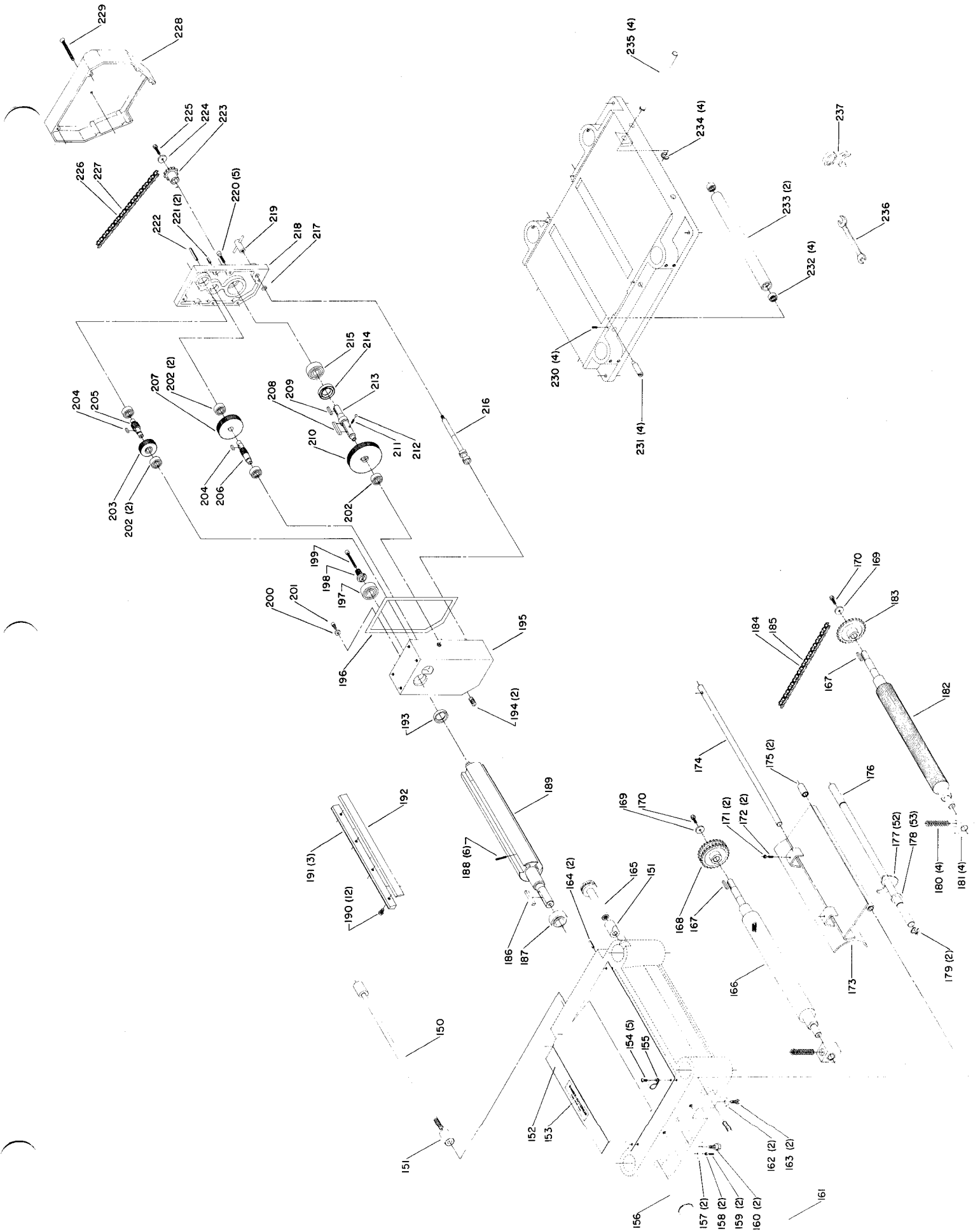


REPLACEMENT PARTS

Ref. No.	Part No.	Description	Ref. No.	Part No.	Description
1	428-06-031-0001	Cover	39	428-06-067-0001	Handle
2	428-01-754-0001	Warning Label	40	428-06-033-0001	Crank
3	1246002	(Din 84) M6 x 12mm Cheese Hd. Mach. Scr.	41	1246023	(Din 1481) ϕ 4 x 28mm Roll Pin
4	428-06-133-0001	Matched Set of 3 V-Belts	43	428-06-017-0002	Bushing
5	1246016	(Din 933) M8 x 25mm Hex Hd. Cap Scr.	44	428-06-132-0001	Scale
6	428-06-104-0001	Washer	45	1246000	(Din 84) M3 x 6mm Cheese Hd. Mach. Scr.
7	428-06-130-0001	Cutterhead Pulley	46	428-06-030-0002	Column (Right Front)
8	1246020	(Din 933) M10 x 80mm Hex Hd. Cap Scr.	47	1246004	(Din 912) M6 x 16mm Soc. Hd. Cap Scr.
9	428-06-017-0001	Bushing	48	428-06-079-0001	Rivet
10	428-06-130-0004	Motor Pulley (7/8" Bore, for Single Phase 60 Hz. Motors only)	49	428-06-137-0001	Nameplate
10	428-06-130-0003	Motor Pulley (24mm Bore, for 3 Phase, 60 Hz. Motors only)	50	428-06-079-0002	Spindle Nut
11	1246009	(Din 916) M8 x 10mm Hex Soc. Set Scr.	51	428-06-085-0001	Small Spindle
12	428-06-104-0004	Flat Washer	52	428-06-085-0002	Large Spindle
13	1246018	(Din 933) M10 x 25mm Hex Hd. Cap Scr.	53	428-06-079-0003	Key
14	1246029	(Din 933) M10 x 40mm Hex Hd. Cap Scr.	54	1246017	(Din 933) M8 x 30mm Hex Hd. Cap Scr.
15	428-06-089-0001	Belt & Pulley Guard	55	1243526	(Din 125) ϕ 8mm Flat Washer
16	62-175	Motor - 220V, Single Phase, 60 Hz.	56	428-06-104-0003	Spindle Washer
16	438-02-314-0939	Motor - 440V, 3 Phase, 60 Hz.	57	920-04-012-4029	Bearing
17	428-06-072-0002	Motor Plate	58	1243505	(Din 472) 42i Retaining Ring
18	1246017	(Din 933) M8 x 30mm Hex Hd. Cap Scr. (For Single Phase only)	59	428-06-134-0001	Sprocket
18	1246079	(Din 933) M8 x 40mm Hex. Hd. Cap Scr. (Three Phase only)	60	428-06-104-0004	Washer
19	1243526	(Din 125) ϕ 8mm Flat, Washer	61	1243496	(Din 934) M10 Hex Nut
20	1243398	(Din 934) M8 Hex Nut	62	428-06-134-0002	Sprocket
21	428-06-020-0001	Column Cap	63	428-06-104-0002	Washer
22	428-06-030-0001	Column	64	1246013	(Din 933) M6 x 12mm Hex Hd. Cap Scr.
23	428-06-088-0001	Limiter Ring	65	428-06-084-0001	Idler
24	428-06-005-0002	Head Casting	66	428-07-104-0010	Flat Washer
25	428-06-036-0001	Chip Deflector	67	1246016	(Din 933) M8 x 25mm Hex Hd. Cap Scr.
26	1246002	(Din 84) M6 x 12mm Cheese Hd. Mach. Scr.	68	428-06-023-0001	Chain
27	1246006	(Din 912) M8 x 50mm Soc. Hd. Cap Scr.	69	428-06-023-0004	Master Link
28	428-06-112-0001	Adjusting Nut	70	428-06-091-0001	Table
29	1246011	(Din 916) M8 x 20mm Hex Soc. Set Scr.	71	1246012	(Din 916) M10 x 20mm Hex Soc. Set Scr.
30	1246013	(Din 933) M6 x 12mm Hex Hd. Cap Scr.	72	428-06-005-0003	Base
31	428-06-122-0001	Chipbreaker Spring	73	428-06-137-0002	Serial No. Plate
32	428-06-014-0001	Bracket (Three Phase Only)	74	428-06-079-0001	Rivet
33	1246001	(Din 84) M5 x 12mm Cheese Hd. Mach. Scr. (Three Phase only)	75	1243526	(Din 125) ϕ 8mm Flat Washer
34	1246010	(Din 916) M8 x 15mm Hex Soc. Set Scr.	76	1243398	(Din 934) M8 Hex Nut
35	428-06-072-0001	Cut Limiter Plate (Single Phase only)	**	438-01-016-0166	Complete Motor Starter, 220V, 3 Phase, 60Hz., Incl.:
36	1246021	(Din 963) M5 x 10mm Flat Hd. Scr., (Single Phase only)	**	438-01-003-0433	Coil - 220V, 3 Phase, 60 Hz.
37	1246026	(Din 6799) 8e Retaining Ring	**	438-01-017-0174	Overload Block - 220V 3 Phase, 60 Hz.
38	428-06-111-0001	Handle Stud	**	438-01-001-0053	Control Box
			**	438-01-003-0434	Coil - 440V, 3 Phase, 60 Hz.
			**	Not Shown	



REPLACEMENT PARTS

Ref. No.	Part No.	Description	Ref. No.	Part No.	Description
150	428-06-004-0003	Rear Lock Bar	*	428-06-057-0001	Cutterhead Ass'y., w/Gear Box, Const. of:
151	428-06-017-0003	Lock Bushing	187	920-04-022-4020	Bearing
152	428-06-031-0002	Upper Cover	188	428-06-122-0003	Spring
153	1085187	Warning Label	189	428-06-012-0001	Cutterhead
154	1246002	(Din 84) M6 x 12mm Cheese Hd. Mach. Scr.	190	428-06-112-0003	Screw
155	438-01-004-0042	Cable Clamp	191	428-06-004-0002	Knife Locking Bar
156	428-06-138-0001	Left Locking Knob	192	22-657	Set of 3 Knives
157	428-06-072-0003	Plate	193	428-06-116-0001	Seal
158	1243395	(Din 934) M5 Hex Nut	194	906-00-000-2436	Plug
159	1246008	(Din 916) M5 x 12mm Hex Soc. Set Scr.	195	428-06-013-0001	Gear Box
160	1246034	(Din 933) M8 x 20mm Hex Hd. Cap Scr.	196	428-06-116-0002	Gasket
161	428-06-004-0001	Front Lock Bar	197	920-04-020-5348	Bearing
162	428-06-104-0005	Washer	198	428-06-051-0001	Gear
163	1246078	(Din 933) M8 15mm Hex Hd. Cap Scr.	199	1246005	(Din 912) M6 x 45mm Soc. Hd. Cap Screw
164	1246024	(Din 1481) ϕ 6 x 20mm Roll Pin	200	428-06-104-0008	Flat Washer
165	428-06-138-0002	Right Locking Knob	201	1243379	(Din 912) M6 x 10mm Soc. Hd. Cap Screw
166	428-06-080-0001	Outfeed Roller	202	920-04-013-1045	Bearing
167	428-06-079-0004	Key	203	428-06-051-0002	Gear
168	428-06-134-0003	Sprocket	204	428-06-079-0006	Key
169	428-06-104-0002	Washer	205	428-06-051-0003	Gear
170	1246014	(Din 933) M6 x 15mm Hex Hd. Cap Scr.	206	428-06-051-0005	Gear
171	1243395	(Din 934) M5 Hex Nut	207	428-06-051-0004	Gear
172	1246008	(Din 916) M5 x 12mm Hex Soc. Set Scr.	208	428-06-079-0007	Key
173	428-06-036-0002	Chipbreaker w/Bushing	209	428-06-079-0004	Key
174	428-06-106-0001	Chipbreaker Adjusting Rod	210	428-06-051-0006	Gear
175	428-06-020-0002	Bushing	211	428-06-122-0004	Spring
176	428-06-106-0002	Anti-Kick Shaft	212	1243446	(Din 5401) ϕ 6 Ball
177	428-06-047-0001	Anti-Kick Finger	213	428-06-106-0003	Shaft
178	428-06-104-0006	Spacer	214	428-06-116-0003	Seal
179	1246028	(Din 6799) 15e Retaining Ring	215	920-04-020-5348	Bearing
180	428-06-122-0002	Spring	216	428-06-106-0004	Clutch Shaft Assembly
181	428-06-010-0001	Block w/Bushing	217	428-06-116-0004	O-Ring
182	428-06-080-0002	Infeed Roller	218	428-06-031-0003	Gear Box Cover
183	428-06-134-0004	Sprocket	219	428-06-138-0003	Handle Assembly
184	428-06-023-0002	Feed Chain	220	1243336	(Din 912) M6 x 20mm Soc. Hd. Cap Screw
185	428-06-023-0005	Master Link	221	1246025	(Din 1481) ϕ 6 x 30mm Roll Pin
186	428-06-079-0005	Key	222	1246081	(Din 1481) ϕ 6 x 40mm Roll Pin
			223	428-06-134-0005	Sprocket
			224	428-06-104-0002	Washer
			225	1246015	(Din 933) M6 x 20mm Hex Hd. Cap Screw
			226	428-06-023-0003	Drive Chain
			227	428-06-023-0005	Master Link
			228	428-06-031-0004	Cover
			229	428-06-112-0004	Screw
			230	1243549	(Din 916) M6 x 12mm Hex Soc. Set Screw
			231	428-06-071-0001	Table Roller Pin
**	22-658	Shaving Hood, Incl.:	232	428-06-017-0004	Bearing
**	1246080	(Din 933) M5 x 12mm Hex Hd. Cap Scr.	233	428-06-080-0003	Table Roller
**	50-315	Steel Stand	234	1246027	(Din 6799) 12 e Retaining Ring
*	Not Shown Assembled		235	428-06-071-0002	Lifting Handle
**	Not Shown		236	428-06-101-0001	Wrench
			237	428-06-050-0001	Knife Gage

AVAILABLE AS ACCESSORIES