

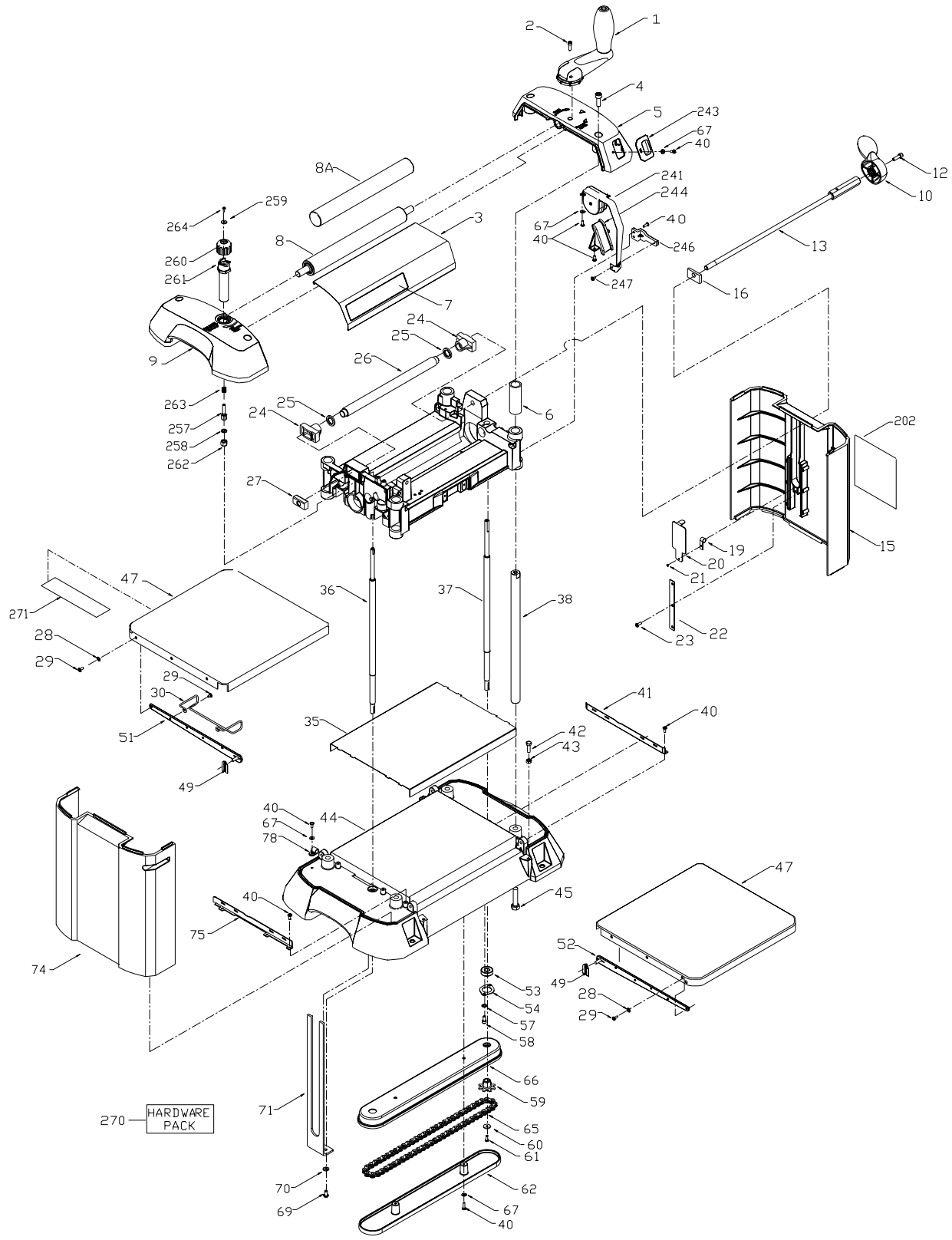


22-580
13" TWO-SPEED
FINISHING PLANER

P-12

PART NO. 901531

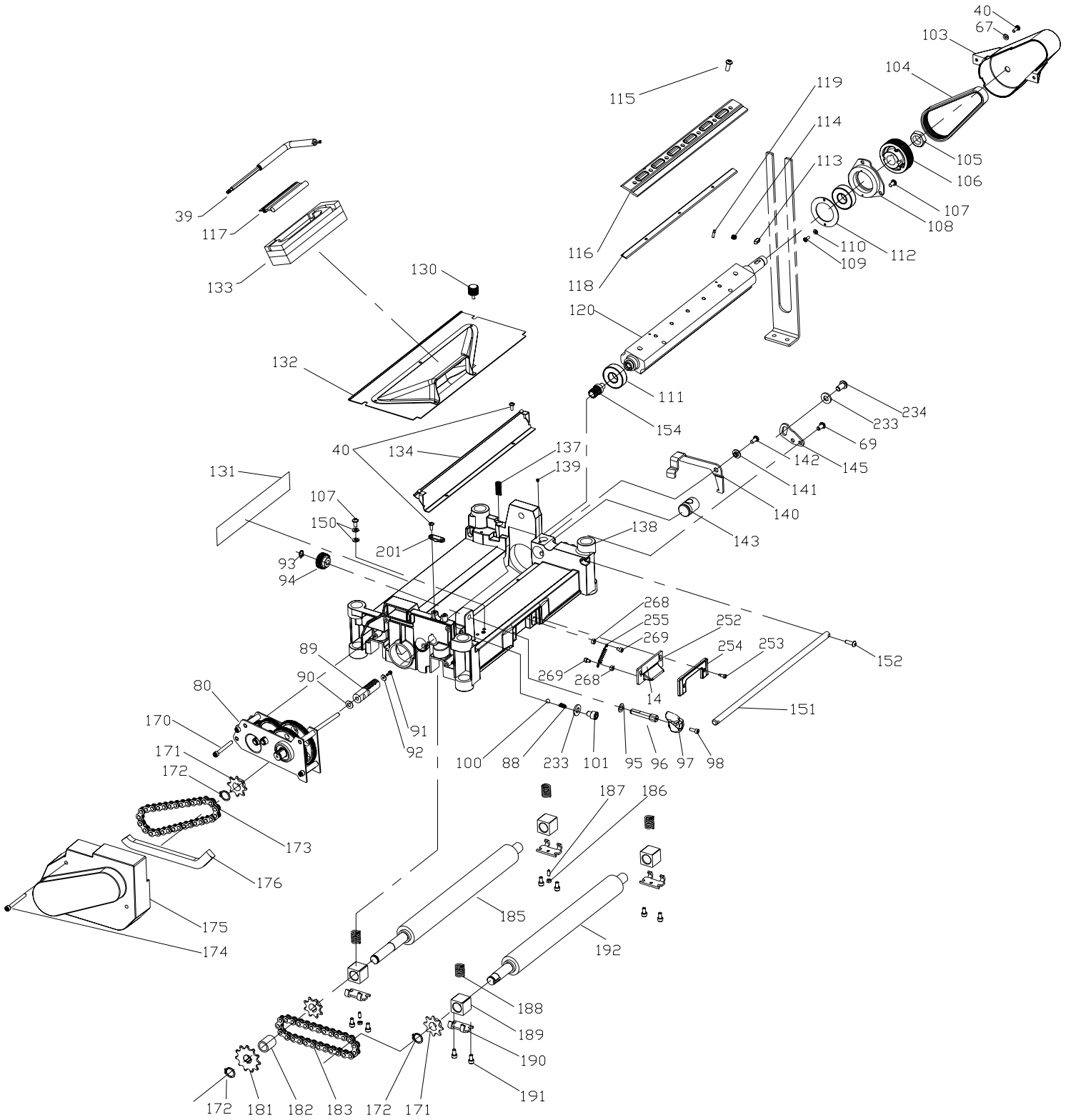
Date: 09-15-04



REPLACEMENT PARTS

Ref.			Ref.		
<u>No.</u>	<u>Part No.</u>	<u>Description</u>	<u>No.</u>	<u>Part No.</u>	<u>Description</u>
1	903452	HANDLE ASSY	51	899301	RIGHT TABLE SUPPORT
2	1246098	M5 X .8 X 16 SCREW	52	899412	LEFT TABLE SUPPORT
3	899368	TOP COVER	53	1341072	BEARING
4	1246053	M8 X 1.25 X 25 SCREW	54	1342197	BEARING RETAINER
5	899278	RIGHT COLUMN SUPPORT	57	1343538	5.1 MM LOCK WASHER
6	900309	STOP, NOTE A	58	1246051	M5 X 0.8 X 12 SCREW
7	899322	NAMEPLATE	59	899302	SPROCKET
8	901359	HANDLE ASSY, INCL...: REF. 8A	60	1342225	SPACER
8A	899279	COVER	61	1349832	M 04 X 0.7 SCREW
9	899281	LEFT COLUMN SUPPORT	62	899303	GUARD
10	899283	HANDLE	65	899304	CHAIN
12	1342220	M6 X 20MM SCREW	66	899305	CHAIN GUARD
13	899287	LOCK ROD ASSY	67	1343545	4.MM FLAT WASHER
15	899289	RIGHT SIDE COVER	69	1345859	M6 X 1.00 X 12 SCREW
16	1342222	LOCKING PLATE	70	1243520	6.1MM LOCK WASHER
19	1342196	SPRING	71	899306	PLATE
20	1342169	GUARD	74	899307	LEFT SIDE COVER
21	1349866	RIVET	75	899308	LEFT GUIDE RAIL
22	900124	GUIDE PLATE	78	1330682	CLAMP
23	900310	M4 X 10MM SCREW	202	899360	WARNING LABEL
24	1342160	HEAD LOCK SHOE	241	903450	TAPE MEASURE ASSY
25	1342162	SPACER	243	899375	FRONT CURSOR
26	899290	TUBE	244	899376	CURSOR BACK
27	903535	NUT	246	899377	TAPE BRACKET
28	1310210	M8 WASHER	247	900478	M4 X 6MM SCREW
29	1246177	M4 X 0.7 X 6 SCREW	257	901530	SHAFT
30	899291	CORD WRAP, EMO	258	901529	NYLON SPACER
35	899292	WEAR PLATE	259	899285	M3 WASHER
36	899293	ELEVATING SCREW-L.H.	260	901156	KNOB
37	899294	ELEVATING SCREW-R.H.	261	901153	SLEEVE ASSY
38	899295	COLUMN	262	901154	NUT
40	1243501	M4 X .7 X 10 SCREW	263	901155	SPRING
41	899297	RIGHT GUIDE RAIL	264	901144	M3 X 8MM SCREW
42	1343101	M6 X 25MM SCREW	270	903556	HARDWARE PACK
43	1243456	M06 X 1.00 HEX NUT	271	1342217	KNIFE TOOL HOLDER
44	899299	BASE			
45	1330158	M10 X 1.5 X 45 SCREW			
47	899300	INFEED/OUTFEED TABLE			
49	899383	SPRING			

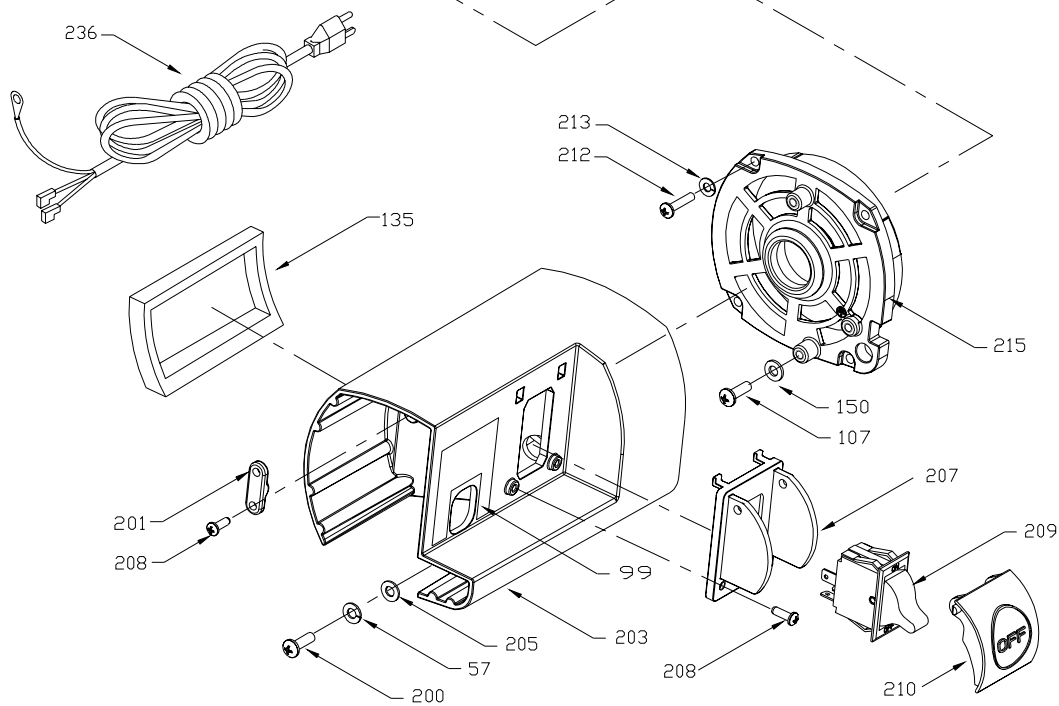
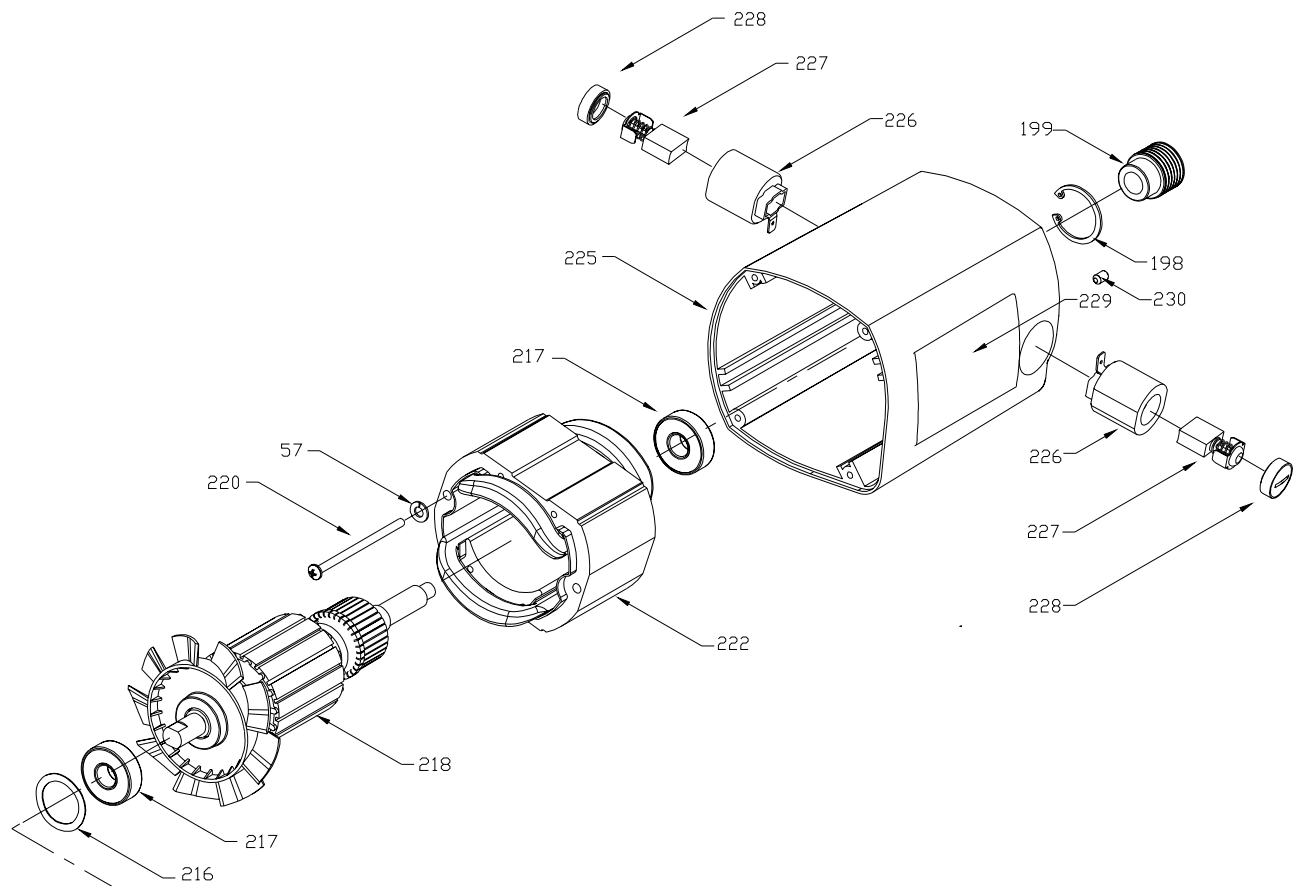
EMO=EARLY MODELS ONLY



REPLACEMENT PARTS

Ref.			Ref.		
<u>No.</u>	<u>Part No.</u>	<u>Description</u>	<u>No.</u>	<u>Part No.</u>	<u>Description</u>
14	901365	LABEL	140	900141	LOCK
39	899296	WRENCH, SEE NOTE B	141	1342168	SPACER
40	1243501	M4 X .7 X 10 SCREW	142	1246001	M5 X 12MM SCREW
67	1343545	WASHER	143	899320	SPINDLE NUT
69	1345859	M6 X 1.00 X 12 SCREW	145	1342189	MOUNTING PLATE
80	903447	GEARBOX ASSY	150	1320101	WASHER
88	899332	SPRING	151	899321	PIVOT ROD
89	899333	SLEEVE	152	1346165	M5 X 0.8 X 16 SCREW
90	899334	WASHER	154	1343903	GEAR
91	903553	M3 X 0.5 X 8MM SCREW	170	899349	M5 X 45MM SCREW
92	899336	WASHER	171	1343881	SPROCKET
93	899337	RETAINING RING	172	1246196	RETAINING RING
94	899338	GEAR	173	899351	CHAIN
95	1313194	WASHER	174	899350	M5 X 50MM SCREW
96	899340	SHIFTER SHAFT	175	899353	GUARD
97	899341	HANDLE	176	899354	SEAL
98	1243482	M4 X 15 SCREW	181	899355	SPROCKET
100	899372	BALL	182	903475	SPACER
101	899374	M8 X 1 X 10MM SCREW	183	1343882	CHAIN
103	901158	BELT GUARD	185	899356	OUTFEED ROLLER
104	22-563	DRIVE BELT	186	1243569	HEX NUT
105	1343849	HEX NUT	187	1349858	M4 X 15MM SCREW
106	899310	DRIVE PULLEY	188	1349831	SPRING
107	1342455	M5 X .8 X 10 SCREW	189	1343875	BEARING BLOCK
108	1342159	BEARING CUP	190	1342157	MOUNTING PLATE
109	902954	M3 X 0.5 X 8MM SCREW	191	1346203	M5 X 0.8 X 10 SCREW
110	904-03-030-1788	WASHER	192	899357	INFEED ROLLER
111	1086894	BEARING	201	1345695	CORD CLAMP
112	1342219	BEARING RETAINER	233	1344330	WASHER
113	903468	KEY	234	1346163	M8 X 1.25 X 16 SCREW
114	1342204	SPRING	252	899385	PLATE
115	899311	SCREW (TORQUE TO 80 - 90 IN. LB.)	253	899386	M3 X 0.5 X 6MM BOLT
116	899312	KNIFE LOCKING BAR	254	899387	FACE
117	900528	KNIFE REMOVAL TOOL, EMO	255	899388	SPRING
	1342213	KNIFE REMOVAL TOOL, CMO	268	901152	SPACER
118	22-549	KNIFE	269	n 1310159	M4 X .7 X 6MM PAN HD SCREW
119	1342145	PIN			
120	903445	CUTTERHEAD ASSY. , INCL.: REF. 119			EMO=EARLY MODELS ONLY
130	1342214	KNOB			CMO=CURRENT MODELS
131	899315	WARNING LABEL			
132	899381	MANIFOLD ASSY			
133	899379	TOOL HOLDER, EMO			
134	900125	CHIP DEFLECTOR			
137	1342205	SPRING			
138	899319	HEAD			
139	1349859	M4 X 4MM SCREW			

NOTE B. THIS TOOL WAS STORED IN A SEPARATE TOOL HOLDER REF. 133 ON EARLY MODELS, THIS TOOL IS STORED IN A HOLE LOCATED IN THE LEFT COLUMN SUPPORT, REF. 9 ON CURRENT MODELS

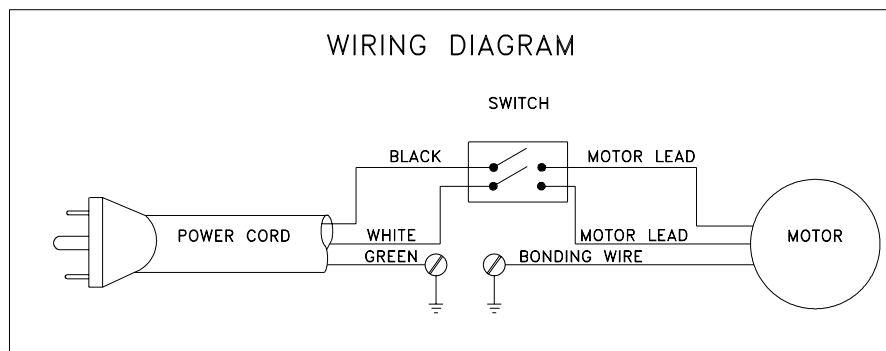


REPLACEMENT PARTS

<u>Ref.</u>	<u>No.</u>	<u>Part No.</u>	<u>Description</u>
	*	903443	MOTOR ASSY
	57	1343538	WASHER
	99	899343	LABEL
	107	1342455	M5 X .8 X 10 SCREW
	135	899317	CUSHION
	150	1320101	WASHER
	198	1246195	RETAINING RING
	199	1343873	MOTOR PULLEY
	200	902019	M5X0.8X16 SCREW
	201	1345695	CORD CLAMP, NOTE A
	203	899361	SWITCH HOUSING
	205	903884	WASHER
	207	899362	SWITCH COVER
	208	899363	M4 X 1.75 X 12MM SCREW
	209	903981	SWITCH
	210	1344601	SWITCH PADDLE
	212	1343051	M4.2 X 20 SCREW
	213	1243525	WASHER
	215	899365	MOTOR END CAP
	216	1343929	WASHER
	217	920-04-013-1045	BEARING
	218	901030	ARMATURE
	220	1343932	M4.8 X 72MM SCREW
	222	903097	FIELD
	225	899366	MOTOR HOUSING
	226	1343934	BRUSH HOLDER
	227	1313113	BRUSH
	228	1343936	BRUSH CAP
	229	899367	NAMEPLATE
	230	1246137	M5 X .8 X 8 SCREW
	236	903098	MOTOR CORD
	**	999-02-023-1214	GREASE

ACCESSORIES: (Optional)

**	50-446	DUST CHUTE
*	NOT SHOWN ASSEMBLED	
**	NOT SHOWN	



SERVICE NOTES:

A - This part has "14 AWG" and "16 AWG" molded into either side (reading from screw hole to screw hole). Be sure to put the correct side down when replacing this part. Example: 14 AWG is molded onto the side that faces down against a 14 AWG cord. The protruding ridges on the 16 AWG side are about twice the height, but with a smaller radius of the 14 AWG.

STANDARD SAFETY EQUIPMENT

In order to promote tool safety, Delta Machinery strictly enforces the policy of repairing or replacing any damaged or missing standard safety equipment on machines presented to Delta Authorized Service Centers for service/repairs. Any product that is presented to a Delta Authorized Service Center for repair with damaged or missing standard safety equipment will have that equipment repaired or replaced and the customer will be charged for any such service/repairs. Customers can avoid such charges only if the missing safety component is supplied to the service center at the time of repair.

This parts list is provided to aid in obtaining service parts. Copies of the instruction and maintenance literature can be obtained through the Delta Technical Publications Department, your service outlet, or by visiting the Delta Website @ www.deltamachinery.com.