

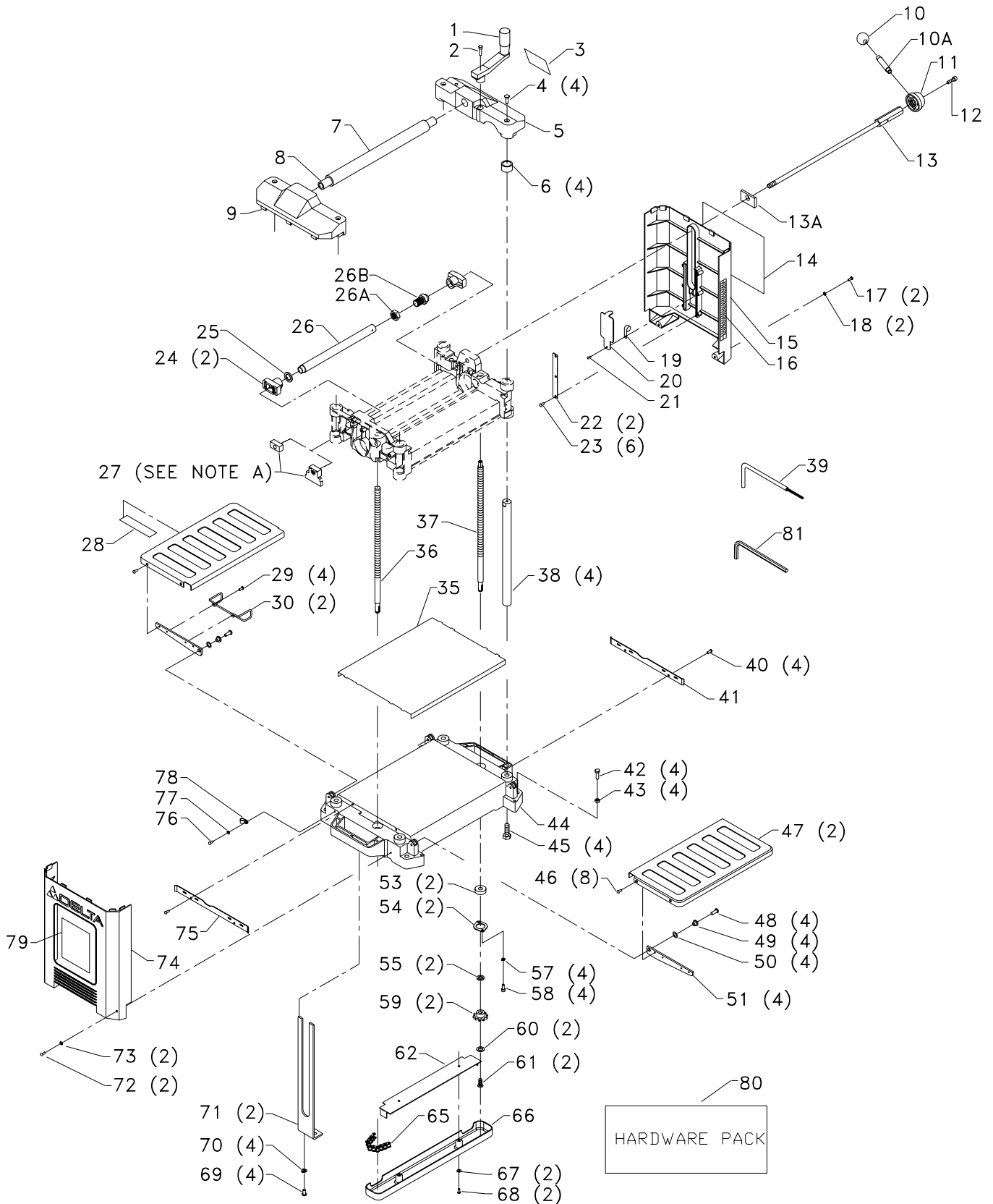


22-560 & 22-565
12 1/2" PORTABLE PLANER

P-8-2

PART NO. 903360

Revised: 08-18-04



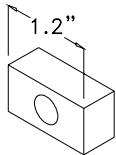
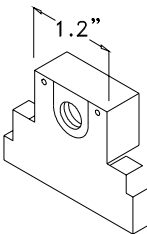
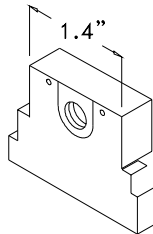
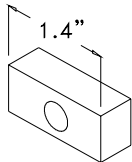
REPLACEMENT PARTS

Ref. No.	Part No.	Description	Ref. No.	Part No.	Description
1	903297	HANDLE ASSY	40	1243501	M4 X .7 X 10MM CHEESE HD SCREW
2	n 1344933	M5 X .8 X 20MM HEX SOC HD SCREW	41	1342199	RIGHT GUIDE RAIL
3	903298	RAISE/LOWER LABEL	42	1246015	M6 X 1 X 20MM HEX HD SCREW
4	1246135	M6 X 1 X 16MM FLAT HD SCREW	43	1243456	M6 HEX NUT
5	903300	COLUMN SUPPORT, T2 & 22-565	44	903306	BASE
	1342178	COLUMN SUPPORT, T1	45	n 1246035	M10 X 1.5 X 30MM HEX HD SCREW
6	1342147	STOP	46	n 1246177	M4 X .7 X 6MM CHEESE HD SCREW
7	1342184	SLEEVE	47	903307	INFEED/OUTFEED TABLE, T2 & 22-565
8	1342187	HANDLE		1342130	INFEED/OUTFEED TABLE, T1
9	903301	COLUMN SUPPORT	48	1246067	M6 X 1 X 16MM CHEESE HD SCREW
10	903302	BALL	49	1342133	TABLE BUSHING
10A	1342166	STUD	50	1342198	SPRING WASHER
11	1342165	HUB	51	903405	TABLE SUPPORT
12	1342220	SPECIAL SCREW	53	1341072	BEARING
13	1342206	LOCK ROD ASSY	54	1342197	BEARING RETAINER
13A	1342222	HEAD LOCKING PLATE	55	1342180	SPINDLE WASHER
14	903362	LOCK/UNLOCK LABEL, T2 & 22-565	57	1343538	M5.1 LOCK WASHER
	1349879	LOCK/UNLOCK LABEL, T1	58	1246051	M5 X .8 X 12MM HEX SOC HD SCREW
15	1342194	SIDE COVER	59	1342137	SPINDLE SPROCKET
16	903304	SCALE, T2 & 22-565	60	1342225	SPACER
	1349878	SCALE, T1	61	1349832	M4 X .7 X 12MM BUTTON HD SCREW
17	n 1243501	M4 X .7 X 10MM CHEESE HD SCREW	62	1342234	DUST SHIELD (EMO)
18	1343545	M4.1 FLAT WASHER	65	1342138	ROLLER CHAIN
19	1342196	SPRING	66	1342136	CHAIN GUARD
20	1342169	GUARD	67	1343545	M4.1 FLAT WASHER
21	1349866	RIVET	68	1243501	M4 X .7 X 10MM CHEESE HD SCREW
22	1342170	GUIDE PLATE	69	1345859	M6 X 1 X 12MM BUTTON HD SCREW
23	1313227	M4 X .7 X 12MM CHEESE HD SCREW	70	1243520	M6.1 LOCK WASHER
24	1342160	HEAD LOCK SHOE	71	1342148	HEAD LOCKING PLATE
25	1342162	SPACER	72	1243501	M4 X .7 X 10MM CHEESE HD SCREW
26	1342164	TUBE	73	1343545	M4.1 FLAT WASHER
26B	1342223	JACK SCREW	74	903308	SIDE COVER, T2 & 22-565
26A	1342224	JAM NUT		1342155	SIDE COVER, T1
27	1342163	HEAD LOCK NUT (NOTE A)	75	1342142	LEFT GUIDE RAIL
	1342240	HEAD LOCK NUT (NOTE A)	76	1243501	M4 X .7 X 10MM CHEESE HD SCREW
28	1342217	TOOL HOLDER	77	1343545	M4.1 FLAT WASHER
29	n 1246177	M4 X .7 X 6MM CHEESE HD SCREW	78	1342930	CLAMP
30	1342132	CORD WRAP	79	1349762	LABEL
35	1342209	WEAR PLATE	80	n 904165	HARDWARE PACK
36	1342139	ELEVATING SCREW L.H.	81	n 428-06-101-0002	HEX WRENCH
37	1342141	ELEVATING SCREW R.H.			
38	1342146	COLUMN			
39	1349864	WRENCH ASSY			

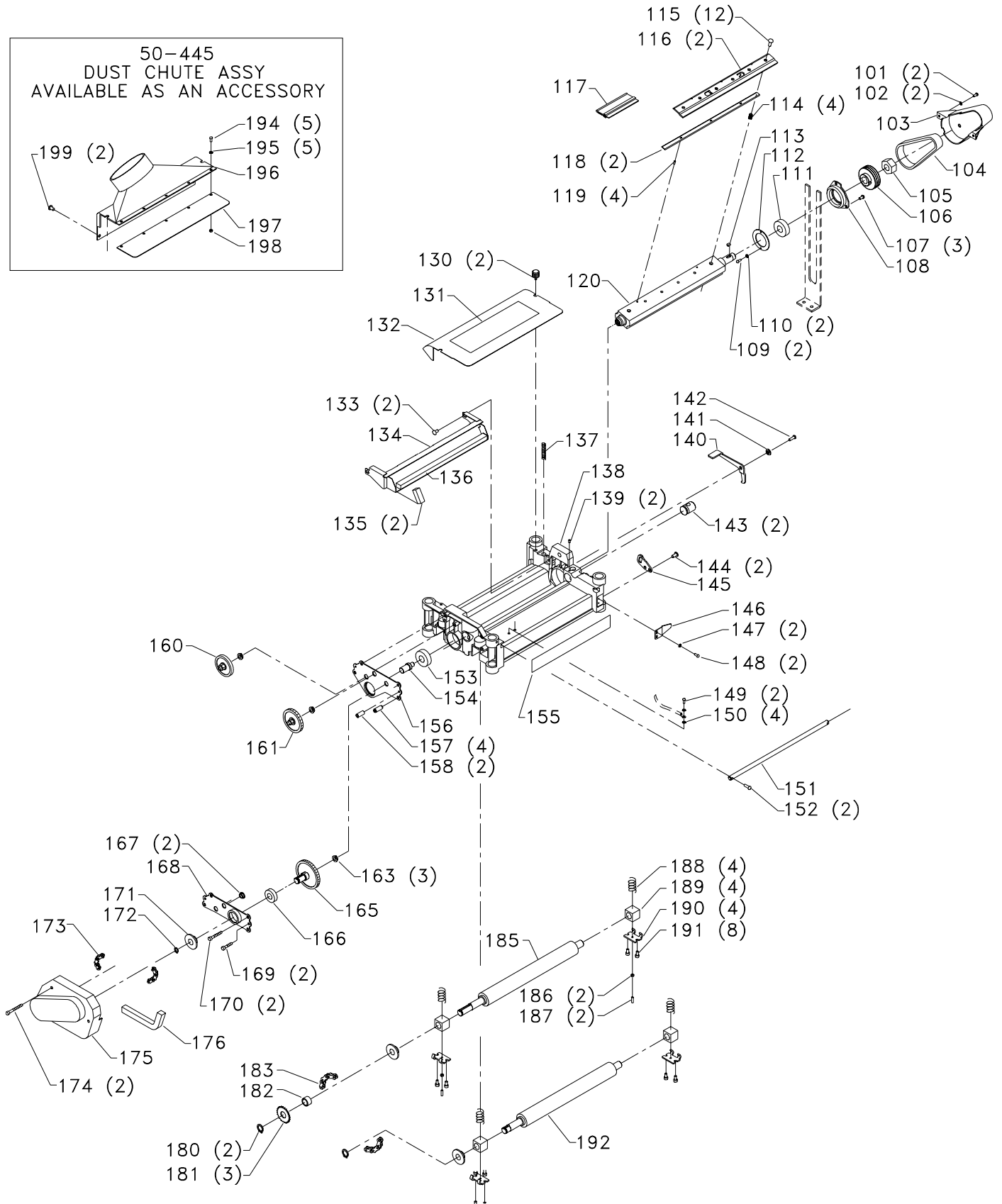
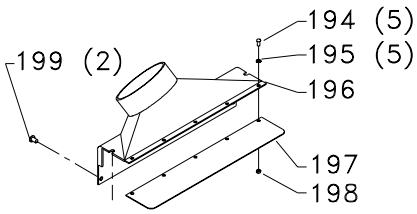
NOTE A: DELTA HAS USED A NUMBER OF DIFFERENT VERSIONS OF THE HEAD LOCK NUT(REF. NO. 27) FOR PRODUCTION. REFER TO THE DRAWINGS BELOW FOR PROPER IDENTIFICATION.

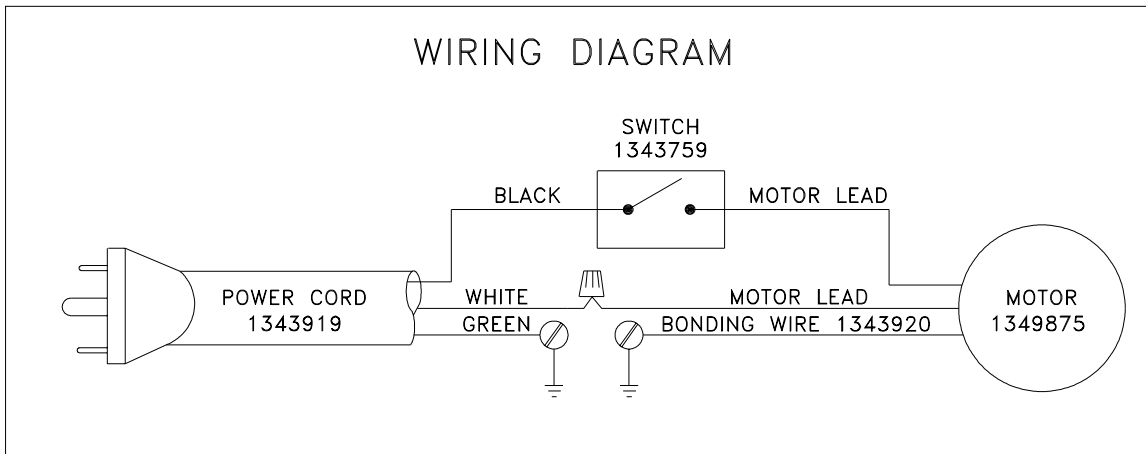
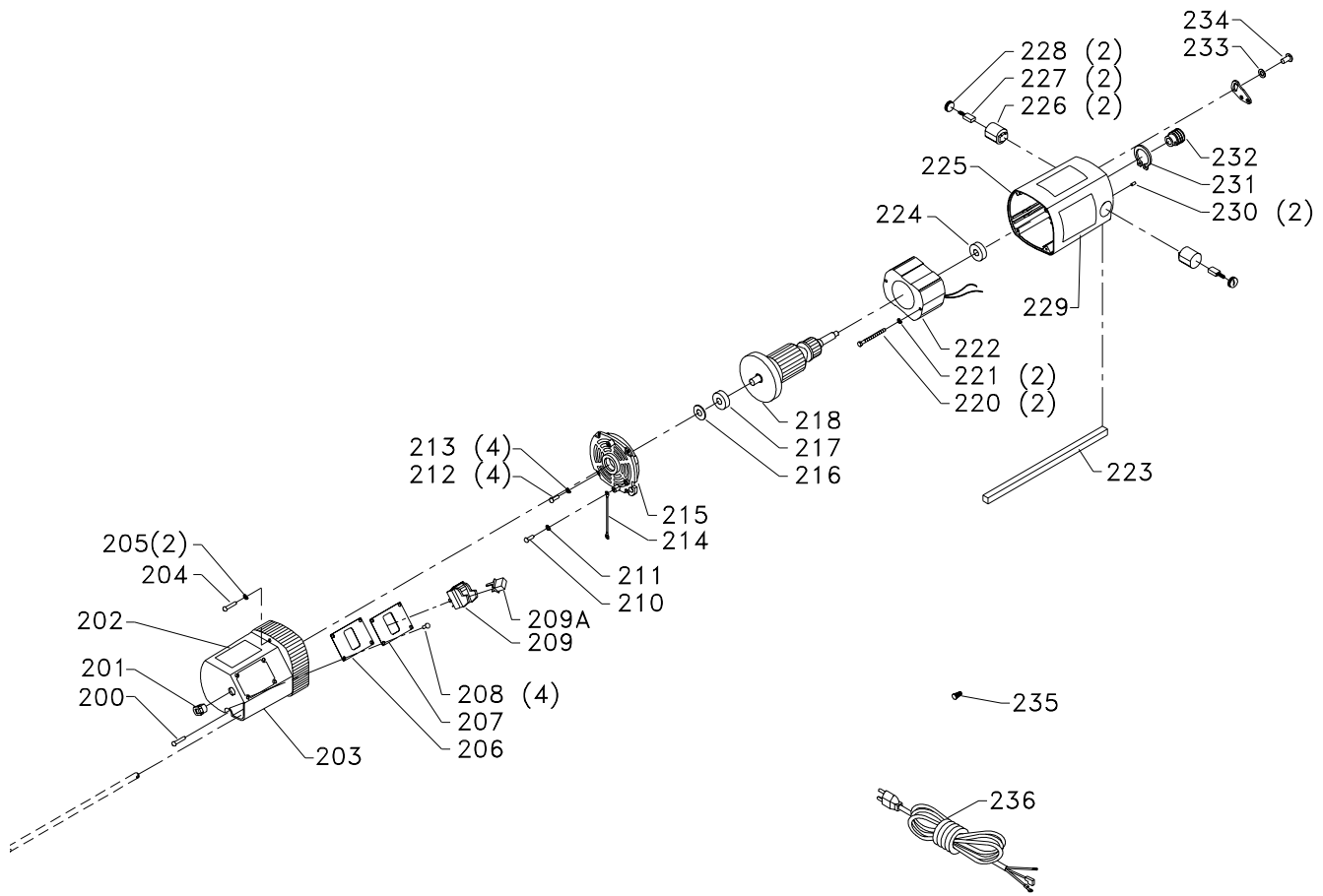
WHEN SREPLACING VERSION 1 WITH P/N 1342163,

1. LOOSEN GEARBOX BOLTS
2. INSERT SPRING METAL CLIP BETWEEN HEAD CASTING RIBS AND GEAR BOX
3. TIGHTEN GEARBOX BOLTS

VERSION 1	VERSION 2	VERSION 3	VERSION 4
			
OBSOLETE, USE P/N 1342163	OBSOLETE, USE P/N 1342163	P/N 1342163	P/N 1342240

50-445
DUST CHUTE ASSY
AVAILABLE AS AN ACCESSORY



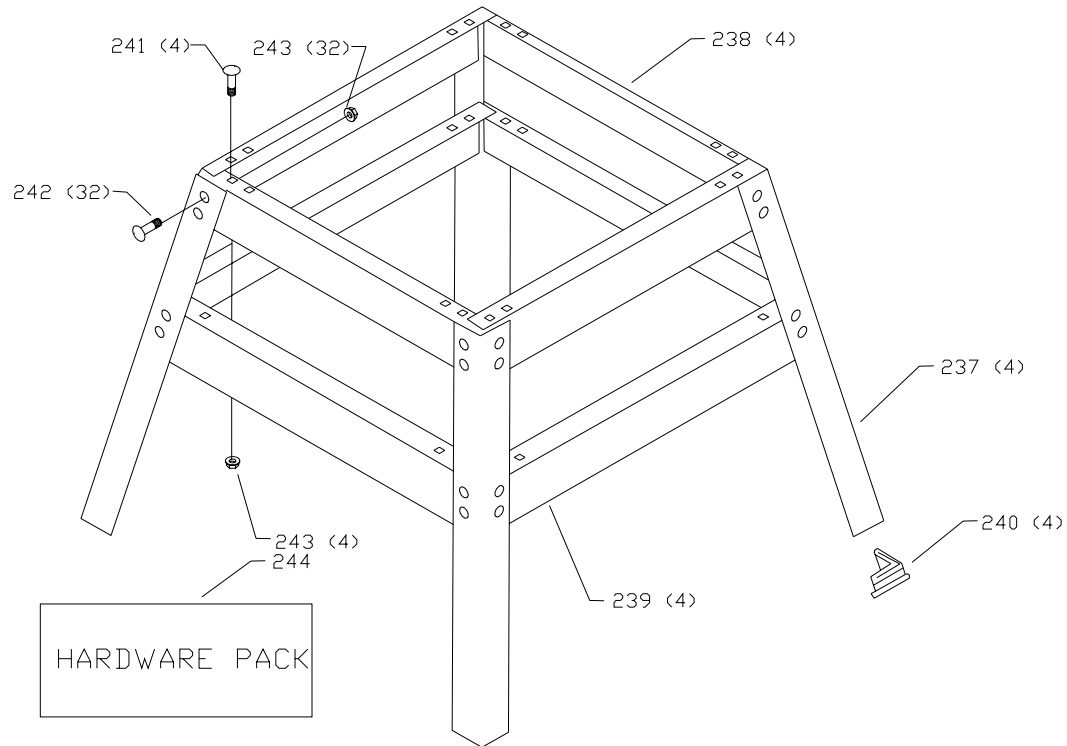


REPLACEMENT PARTS

Ref.

<u>No.</u>	<u>Part No.</u>	<u>Description</u>
*	903458	MOTOR ASSY, INCL.:
200	1349856	M5 X .8 X 40MM PAN HD SCREW
201	438-01-004-0062	HEYCO BUSHING 5/8"
202	903314	WARNING LABEL
203	903371	HOUSING, T2 & 22-565
	1342185	HOUSING, T1
204	1349857	M5 X .8 X 50MM PAN HD SCREW
205	1343538	M5.1 LOCK WASHER
206	1342202	INSULATOR
207	903316	SWITCH COVER
208	1343140	M5.5 X .8 X 12MM PAN HD SCREW
209	1343759	SWITCH, INCL:
209A	400-06-068-0002	SWITCH KEY
210	n 1343923	M5.5 X .8 X 10MM PAN HD SCREW
211	1320101	M5.3 EXT TOOTH WASHER
212	1343051	M4.2 X .7 X 20MM PAN HD SCREW
213	1243525	M4.1 LOCK WASHER
214	1343920	BONDING WIRE
215	1342175	MOTOR END CAP
216	1343929	WAVE WASHER
217	920-04-013-1045	BEARING
218	n 901030	ARMATURE
220	1343932	M4.8 X 72MM PAN HD SCREW
221	1343538	M5.1 LOCK WASHER
222	1343943	FIELD
223	1349868	SEAL
224	920-04-013-1045	BEARING
225	903372	MOTOR HOUSING
226	1343934	BRUSH HOLDER
227	n 1313113	BRUSH
228	1343936	BRUSH CAP
229	903318	NAMEPLATE, T2 & 22-565
	1349882	NAMEPLATE, T1
230	1246137	M5 X .8 X 8MM HEX SOC SET SCREW
231	1246195	INT RET RING
232	1343873	MOTOR PULLEY
233	1344330	M8 FLAT WASHER
234	1346163	M8 X 1.25 X 16MM BUTTON HD SCREW
235	438-01-007-0042	WIRE NUT
236	1343919	MOTOR CORD
*		NOT SHOWN ASSEMBLED

REPLACEMENT PARTS



Ref.

No.	Part No.	Description
237	903488	LEG
238	903487	TOP BRACE
239	903489	LOWER BRACE
240	427-99-048-0001	FOOT
241	903402	M8 X 1.25 X 16MM HEX FLG SCREW
242	1349177	M8 X 1.25 X 16MM CARR BOLT
243	1348301	M8 X 1.25 HEX FLG NUT
244	n 903392	HARDWARE PACK

STANDARD SAFETY EQUIPMENT

In order to promote tool safety, Delta Machinery strictly enforces the policy of repairing or replacing any damaged or missing standard safety equipment on machines presented to Delta Authorized Service Centers for service/repairs. Any product that is presented to a Delta Authorized Service Center for repair with damaged or missing standard safety equipment will have that equipment repaired or replaced and the customer will be charged for any such service/repairs. Customers can avoid such charges only if the missing safety component is supplied to the service center at the time of repair.

This parts list is provided to aid in obtaining service parts. Copies of the instruction and maintenance literature can be obtained through the Delta Technical Publications Department, your service outlet, or by visiting the Delta Website @ www.deltamachinery.com.