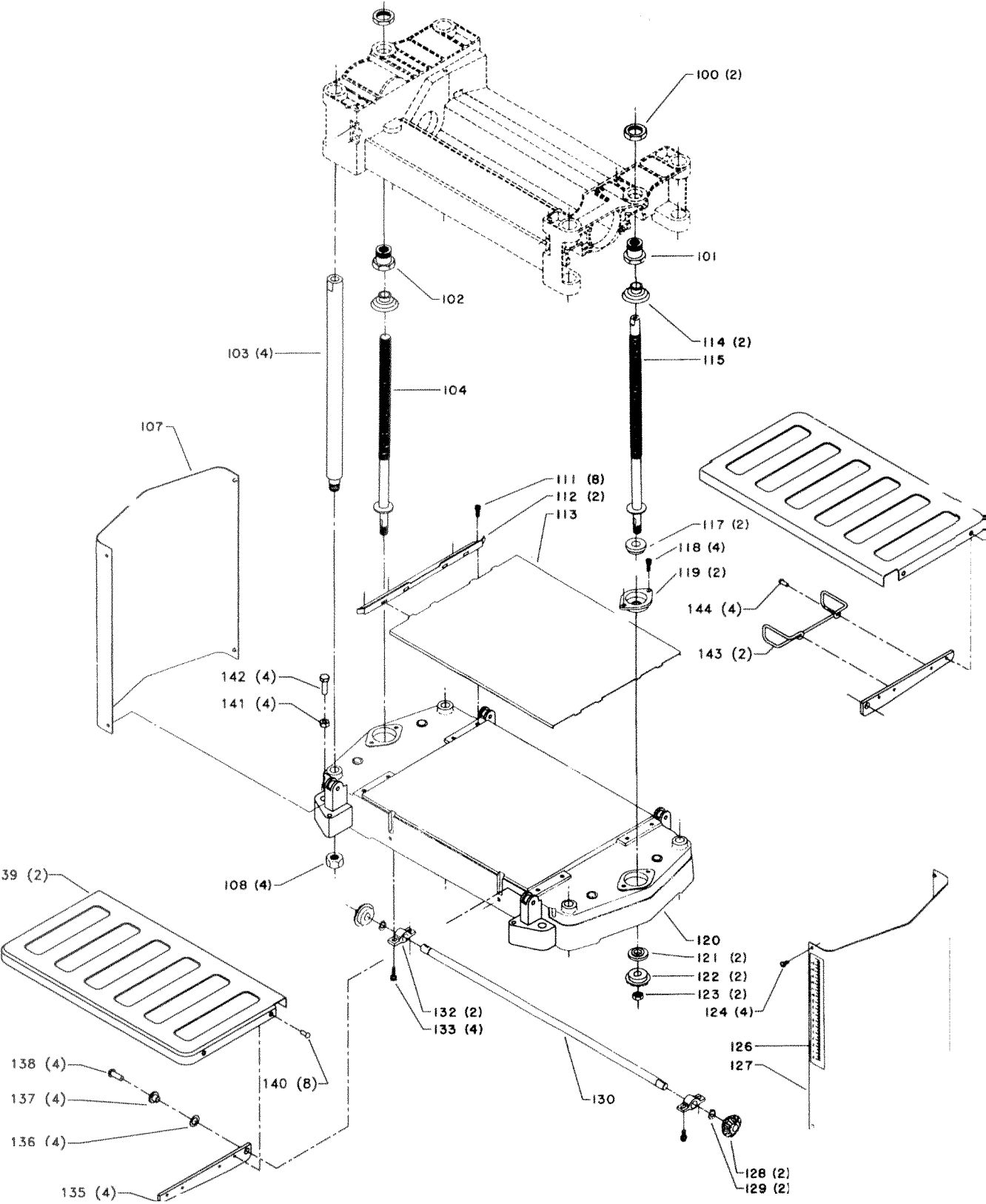


REPLACEMENT PARTS

REF. NO.	PART NUMBER	DESCRIPTION	REF. NO.	PART NUMBER	DESCRIPTION
1	1343851	HANDLE	40	1320101	(DIN 6797A) M5.3 EXT TOOTH WASHER
2	1341950	(DIN 7) M5 X 35MM DOWEL PIN	41	1310162	(DIN 85) M5 X 12MM PAN HD SCR
3	1344933	(DIN 912) M5 X 20MM HEX SOC HD SCR	42	1246102	(DIN 125) M5.3 FLAT WASHER
4	1343852	ELEVATING HANDLE ASSY	43	1343865	POINTER
5	1342035	(DIN 7991) M6 X 12MM FLAT HD SCR	44	1343937	MOTOR PIVOT ROD
6	1343853	TOP COVER	45	1344393	NAMEPLATE
7	1310162	(DIN 85) M5 X 12MM PAN HD SCR	46	1343858	BELT GUARD
8	1246102	(DIN 125) M5.3 FLAT WASHER	47	1340637	(DIN 9021) M8.4 FLAT WASHER
9	1343856	AIR MANIFOLD	48	1246051	(DIN 912) M5 X 12MM HEX SOC HD SCR
10	1343854	(DIN 315) M5 WING NUT	49	1343857	BRACKET
11	1246102	(DIN 125) M5.3 FLAT WASHER	50	1340637	(DIN 9021) M8.4 FLAT WASHER
12	1246158	(DIN 916) M5 X 16MM HEX SOC SET SCR (SEE NOTE A)	51	1310105	(DIN 933) M8 X 16MM HEX HD SCR
	1343855	DUST CHUTE	52	1343860	UPPER FRAME
	1340080	WARNING LABEL	53	1343868	SPRING
15	1246196	EXT RET RING	54	1343867	CUTTERHEAD
16	1343882	CHAIN	55	1343866	KEY
17	1343881	SPROCKET	56	22-547	KNIVES, (SET OF 2)
	1343916	SPACER	57	1343870	KNIFE LOCK BAR
	1343915	(DIN 912) M5 X 35MM HEX SOC HD SCR	58	1343869	KNIFE LOCK SCR
	1343948	GEAR BOX ASSY, CONST OF:	59	1086894	BALL BEARING
20	1246050	(DIN 912) M5 X 25MM HEX SOC HD SCR	60	1343871	BEARING RETAINER
21	1343947	OUTSIDE COVER	61	1246051	(DIN 912) M5 X 12MM HEX SOC HD SCR
22	920-04-013-1276	BALL BEARING	62	1343872	CUTTERHEAD PULLEY
23	1343912	SHAFT	63	22-546	BELT
	1343908	BUSHING	64	1343849	M16 HEX NUT (L.H., SEE NOTE A)
26	1343911	GEAR (SMALL)	65	1343873	MOTOR PULLEY
27	1343910	GEAR (INTERMEDIATE)	66	1343882	CHAIN
28	1343909	GEAR (LARGE)	67	1343881	SPROCKET
29	1343907	SPACER UNDERCUT	68	1246196	EXT RET RING
30	1343906	SPACER	69	1343878	SPRING (INFEED)
31	1343946	INSIDE COVER	70	1343875	BEARING BLOCK
32	1343902	COVER	71	1343880	RETAINER (L.H.)
33	1343903	PINION GEAR	72	1246051	(DIN 912) M5 X 12MM HEX SOC HD SCR
34	1086894	BALL BEARING	73	1343879	INFEED ROLLER
35	1310162	(DIN 85) M5 X 12MM PAN HD SCR	74	1343877	RETAINER (R.H.)
36	1343862	CABLE CLAMP	75	1246051	(DIN 912) M5 X 12MM HEX SOC HD SCR
37	1343864	PLATE	76	1343874	SPRING (OUTFEED)
38	1310162	(DIN 85) M5 X 12MM PAN HD SCR	77	1343876	OUTFEED ROLLER
39	1342455	(DIN 85) M5 X 10MM PAN HD SCR	78	1343917	KNIFE GAGE
			79	1343918	8 X 10 OPEN END WRENCH

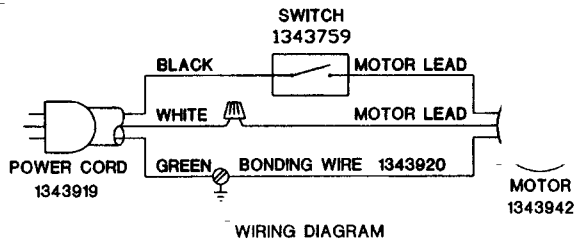
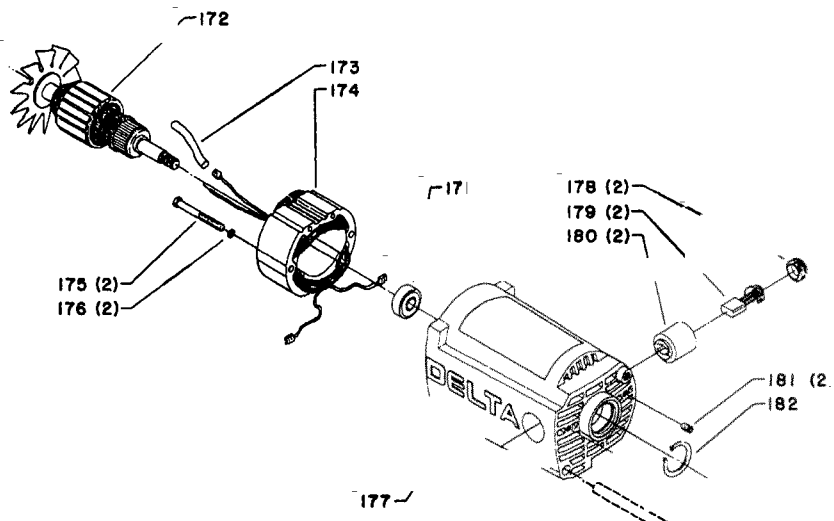
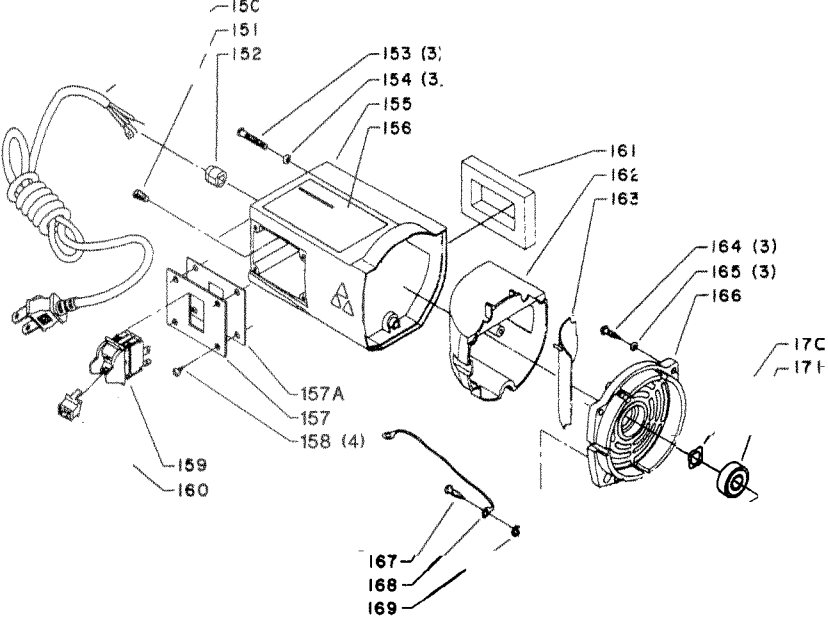
* NOT SHOWN ASSEMBLED

NOTES: A) WHEN SERVICING, USE THREAD RETAINING COMPOUND PRIOR TO INSTALLATION.



REPLACEMENT PARTS

<u>REF. NO.</u>	<u>PART NUMBER</u>	<u>DESCRIPTION</u>
100	1343859	(DIN 936) M20 x 1.00 HEX LOW NUT
101	1343861	ELEVATING NUT (R.H.)
102	1343863	ELEVATING NUT (L.H.)
103	1343883	POST
104	1343892	SPINDLE (L.H.)
107	1343893	COVER (L.H.)
108	1243476	(DIN 934) M12 HEX NUT
111	1246051	(DIN 912) M5 X 12MM HEX SOC HD SCR
112	1343894	GUIDE
113	1343895	PLATEN
114	1343886	BOOT
115	1343884	SPINDLE (R.H.)
117	1343887	THRUST BEARING
118	1246051	(DIN 912) M5 X 12MM HEX SOC HD SCR
119	1343888	RETAINER
120	1344123	BASE
121	1343889	THRUST BEARING ASSY
122	1343890	GEAR
123	1343891	(DIN 985) M10 LOCK NUT
124	1243394	(DIN 84) M5 X 10MM CHEESE HD SCR
126	1343897	SCALE
127	1343945	COVER (R.H.)
128	1343890	GEAR
129	1243503	EXT RET RING
130	1343899	SHAFT
132	1343898	SUPPORT
133	1246051	(DIN 912) M5 X 12MM HEX SOC HD SCR
135	1342131	TABLE SUPPORT
136	1342198	SPRING WASHER
137	1342133	TABLE BUSHING
138	1246067	(DIN 84) M6 X 16MM CHEESE HD SCR
139	1342130	INFEED/OUTFEED TABLE
140	1246177	(DIN 84) M4 X 6MM CHEESE HD SCR
141	1243456	(DIN 934) M6 HEX NUT
142	1246015	(DIN 933) M6 X 20MM HEX HD SCR
143	1342132	CORD WRAP
144	1246177	(DIN 84) M4 X 6MM CHEESE HD SCR



REPLACEMENT PARTS

<u>REF. NO.</u>	<u>PART NUMBER</u>	<u>DESCRIPTION</u>
*	1343942	MOTOR ASSY, CONST OF:
150	1343919	MOTOR CORD
151	438-01-007-0042	WIRE NUT
152	438-01-004-0062	HEYCO BUSHING 5/8"
153	1310006	M5 X 20MM ROUND HD SCR
154	1343538	(DIN 7980) M5.1 LOCK WASHER
155	1343921	HOUSING
156	1344394	WARNING LABEL
157	1343922	SWITCH PLATE
157A	1343850	INSULATOR
158	1343923	(DIN 7981B) M5.5 X 10MM PAN HD SCR
159	1343759	SWITCH, INCL:
160	400-06-068-0002	SWITCH KEY
161	1343924	GASKET
162	1343925	COVER
163	1343926	DEFLECTOR
164	1343927	(DIN 7981B) M5.5 X 17MM PAN HD SCR
165	1343538	(DIN 7980) M5.1 LOCK WASHER
166	1343928	END COVER
167	1343923	(DIN 7981B) M5.5 X 10MM PAN HD SCR
168	1343920	BONDING WIRE
169	1320101	(DIN 6797A) M5.3 EXT TOOTH WASHER
170	1343929	WAVE WASHER
171	920-04-013-1045	BALL BEARING
172	1343930	ARMATURE
173	1343931	SLEEVE
174	1343943	FIELD
175	1343932	(DIN 7981B) M4.8 X 72MM PAN HD SCR
176	1343538	(DIN 7980) M5.1 LOCK WASHER
177	1343933	MOTOR HOUSING
178	1343936	BRUSH CAP
179	1343935	BRUSH
180	1343934	BRUSH HOLDER
181	1246008	(DIN 916) M5 X 12MM HEX SOC SET SCR
182	1246195	INT RET RING

* NOT SHOWN ASSEMBLED

STANDARD SAFETY EQUIPMENT

In order to promote tool safety, Delta International Machinery Corp. strictly enforces the policy of repairing or replacing any damaged or missing standard safety equipment on machines presented to Delta Authorized Service Centers for service/repair. Any product which is presented to a Delta Authorized Service Center for repairs which contains missing or damaged standard safety equipment will have that equipment repaired or replaced and the customer will be charged for any such service/repairs. Customers can avoid such charges only if the missing safety component is supplied to the service center at the time of repair.

This parts list is provided to aid in obtaining service parts. Copies of the instruction and maintenance literature can be obtained through the Delta Technical Publications Department or through your local service outlet.