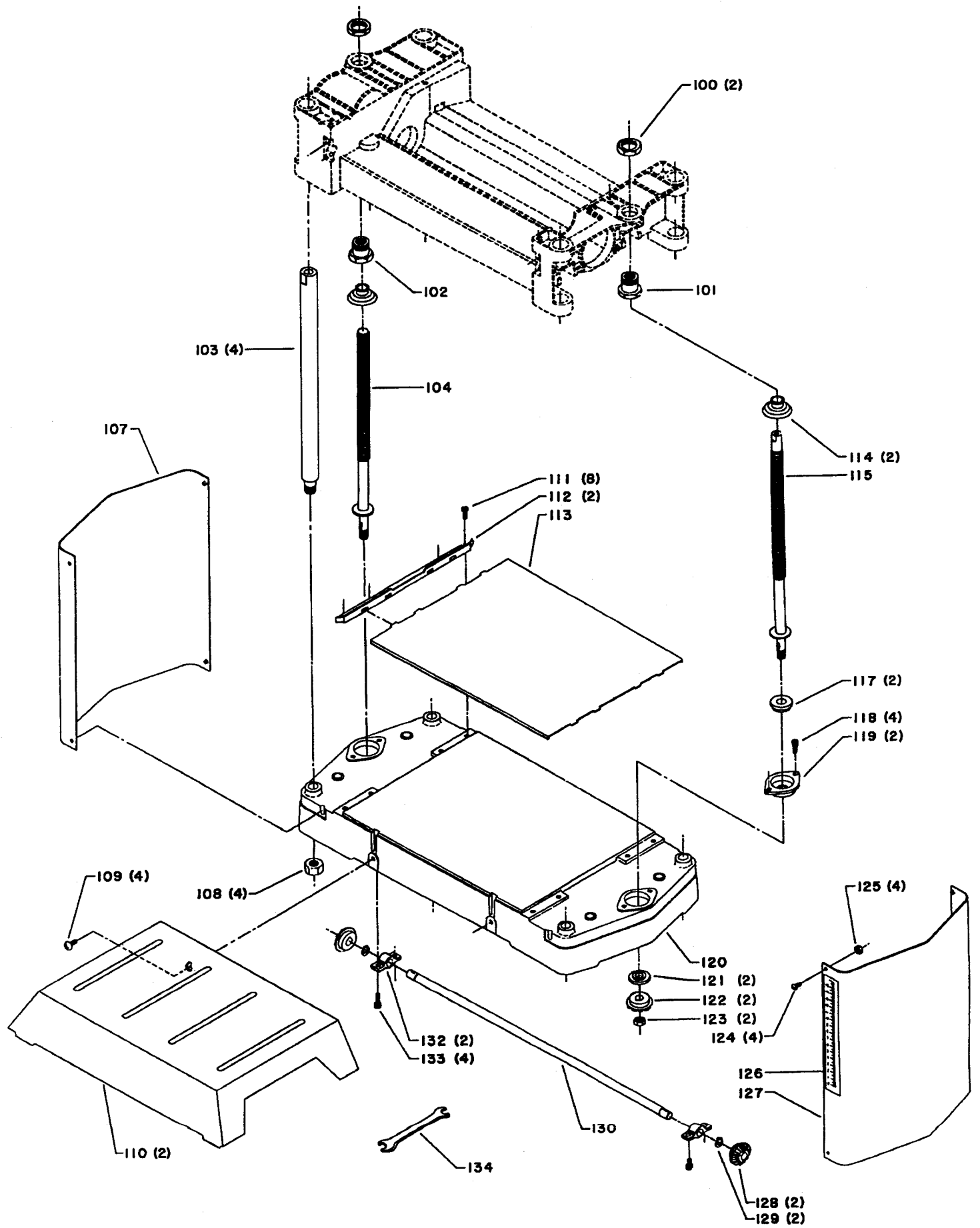


REPLACEMENT PARTS

Ref No	Part No	Description	Ref No	Part No	Description
1	1343851	Handle	39	1342455	(Din 84) M5 x 10mm Pan Hd Screw
2	1341950	(Din 7) 5 x 35mm Dowel Pin	40	1320101	(Din 6797A) 5.3mm Star Washer
3	1344933	(Din 912) M5 x 20mm Soc Hd Screw	41	1310162	(Din 85) M5 x 12mm Pan Hd Screw
4	1343852	Elevating Handle Assembly	42	1246102	(Din 125) 5mm Flat Washer
5	1342035	(Din 7991) M6 x 12mm Hex Soc Flat Hd Screw	43	1343865	Pointer
6	1343853	Top Cover	44	1343937	Motor Pivot Rod
7	1310162	(Din 85) M5 x 12mm Pan Hd Screw	45	1343938	Nameplate
8	1246102	(Din 125) 5mm Flat Washer	46	1343858	Belt Guard
9	1343856	Air Manifold	47	1340637	8.4mm Flat Washer
10	1343854	(Din 315) 5mm Wing Nut	48	1246051	(Din 912) M5 x 12mm Soc Hd Screw
11	1246102	(Din 125) 5mm Flat Washer	49	1343857	Motor Adjusting Bracket
12	1246158	(Din 913) M5 x 16mm Hex Soc Set Screw (See Service Note A)	50	1340637	8.4mm Flat Washer
13	1343855	Dust Chute	51	1310105	(Din 933) M8 x 16mm Hex Hd Screw
14	1343941	Warning Label	52	1343860	Upper Frame
15	1246196	(Din 471) 15e Ext Retaining Ring	53	1343868	Spring
16	1343882	Chain	54	1343867	Cutterhead
17	1343881	Sprocket	55	1343866	Key
18	1343916	Spacer	56	22-547	Set of Two (2) Knives
19	1343915	(Din 912) M5 x 35mm Soc Hd Screw	57	1343870	Knife Lock Bar
*	1343948	Gearbox Assembly (Current Models Only), Const of: (See Service Note B)	58	1343869	Knife Lock Screw
20	1246050	(Din 912) M5 x 25mm Soc Hd Screw	59	1086894	Bearing
21	1343947	Outside Cover	60	1343871	Bearing Retainer
22	920-04-013-1276	Bearing	61	1246051	(Din 912) M5 x 12mm Soc Hd Screw
23	1343912	Shaft	62	1343872	Cutterhead Pulley
25	1343908	Bushing	63	22-546	Drive Belt
26	1343911	Gear - Small	64	1343849	M16 L.H. Hex Nut
27	1343910	Gear - Intermediate	65	1343873	Motor Pulley
28	1343909	Gear - Large	66	1343882	Chain
29	1343907	Spacer - Undercut	67	1343881	Sprocket
30	1343906	Spacer	68	1246196	(Din 471) 15e Ext Retaining Ring
31	1343946	Inside Cover	69	1343878	Spring (Infeed)
*	1343950	Gearbox Assembly Service Kit (Early Models Only) (See Service Note B)	70	1343875	Bearing Block
32	1343902	Cover	71	1343880	Retainer - Left
33	1343903	Pinion Gear	72	1246051	(Din 912) M5 x 12mm Soc Hd Screw
34	1086894	Bearing	73	1343879	Infeed Roller
35	1310162	(Din 85) M5 x 12mm Pan Hd Screw	74	1343877	Retainer - Right
36	1343862	Cable Clamp	75	1246051	(Din 912) M5 x 12mm Soc Hd Screw
37	1343864	Retainer Plate	76	1343874	Spring (Outfeed)
38	1310162	(Din 85) M5 x 12mm Pan Hd Screw	77	1343876	Outfeed Roller
			78	1343917	Knife Gage
			*		Not Shown Assembled

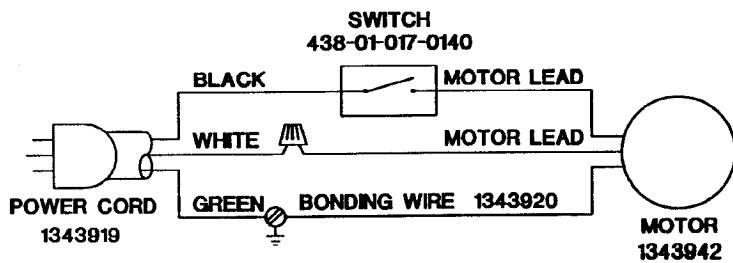
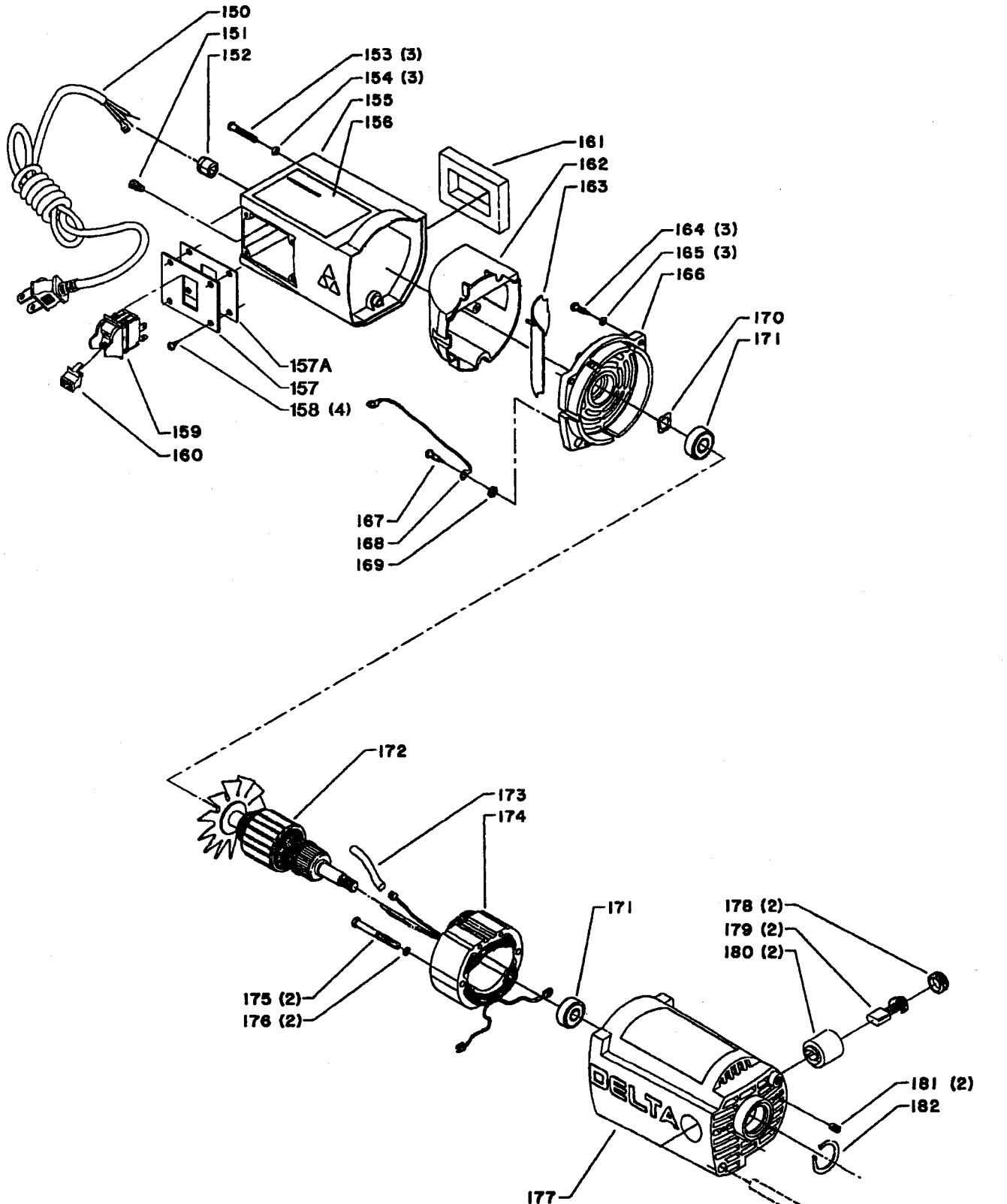
Service Notes:

- A - Install with Loctite to prevent loosening during operation.
- B - When replacing Gearbox Assembly on units w/Serial No. S9236 and lower, refer to Service Bulletin ST-268 and order 1343950, Gearbox Assembly Service Kit.



REPLACEMENT PARTS

<u>Ref No</u>	<u>Part No</u>	<u>Description</u>
100	1343859	(Din 936) M20 Hex Nut
101	1343861	R.H. Elevating Nut
102	1343863	L.H. Elevating Nut
103	1343883	Post
104	1343892	L.H. Spindle
107	1343893	Side Cover
108	1243476	(Din 934) M12 Hex Nut
109	1343900	Special Screw
110	1343901	Table Extension
111	1246051	(Din 912) M5 x 12mm Soc Hd Screw
112	1343894	Guide
113	1343895	Platen
114	1343886	Boot
115	1343884	R.H. Spindle
117	1343887	Thrust Bearing
118	1246051	(Din 912) M5 x 12mm Soc Hd Screw
119	1343888	Retainer
120	1343896	Base
121	1343889	Thrust Bearing
122	1343890	Gear
123	1343891	(Din 985) M10 Lock Nut
124	1243394	(Din 84) M5 x 10mm Cheese Hd Screw
125	1243395	(Din 934) M5 Hex Nut (Early Models Only)
126	1343897	Scale
127	1343945	Side Cover
128	1343890	Gear
129	1243503	(Din 471) 10e Ext Retaining Ring
130	1343899	Shaft
132	1343898	Support
133	1246051	(Din 912) M5 x 12mm Soc Hd Screw
134	1343918	Knife Wrench



WIRING DIAGRAM

REPLACEMENT PARTS

<u>Ref No</u>	<u>Part No</u>	<u>Description</u>
*	1343942	Motor Assembly, Const of:
150	1343919	Power Cord
151	438-01-007-0042	Wire Nut
152	438-01-004-0062	Strain Relief Bushing
153	1310006	M5 x 20mm Rd Hd Screw
154	1343538	(Din 7980) M5 Lockwasher
155	1343921	Housing
156	1343939	Warning Label
157	1343922	Switch Plate
157A	1343850	Insulator
158	1343923	(Din 7981B) M5 x 10mm Pan Hd Self Tap Screw
159	438-01-017-0140	Switch, Incl:
160	400-06-068-0002	Switch Key
161	1343924	Gasket
162	1343925	Cover
163	1343926	Deflector
164	1343927	(Din 7981B) M5 x 16mm Pan Hd Self Tap Screw
165	1343538	(Din 7980) M5 Lockwasher
166	1343928	End Cover
167	1343923	(Din 7981B) M5 x 10mm Pan Hd Self Tap Screw
168	1343920	Bonding Wire
169	1320101	(Din 6797A) 5.3mm Star Washer
170	1343929	Wavy Washer
171	920-04-013-1045	Bearing
172	1343930	Armature
173	1343931	Sleeve
174	1343943	Field
175	1343932	(Din 7981B) M5 x 70mm Pan Hd Self Tap Screw
176	1343538	(Din 7980) M5 Lockwasher
177	1343933	Motor Housing
178	1343936	Brush Cap
179	1343935	Brush
180	1343934	Brush Holder
181	1246008	(Din 916) M5 x 12mm Hex Soc Set Screw
182	1246195	(Din 472) 32i Int Retaining Ring

* Not Shown Assembled

STANDARD SAFETY EQUIPMENT

In order to promote tool safety, Delta International Machinery Corp. strictly enforces the policy of repairing or replacing any damaged or missing standard safety equipment on machines presented to Delta Authorized Service Centers for service/repairs. Any product which is presented to a Delta Authorized Service Center for repairs which contains missing or damaged standard safety equipment will have that equipment repaired or replaced and the customer will be charged for any such service/repairs. Customers can avoid such charges only if the missing safety component is supplied to the service center at the time of repair.

This parts list is provided to aid in obtaining service parts. Copies of the instruction and maintenance literature can be obtained through the Delta Technical Publications Department or through your local service outlet.