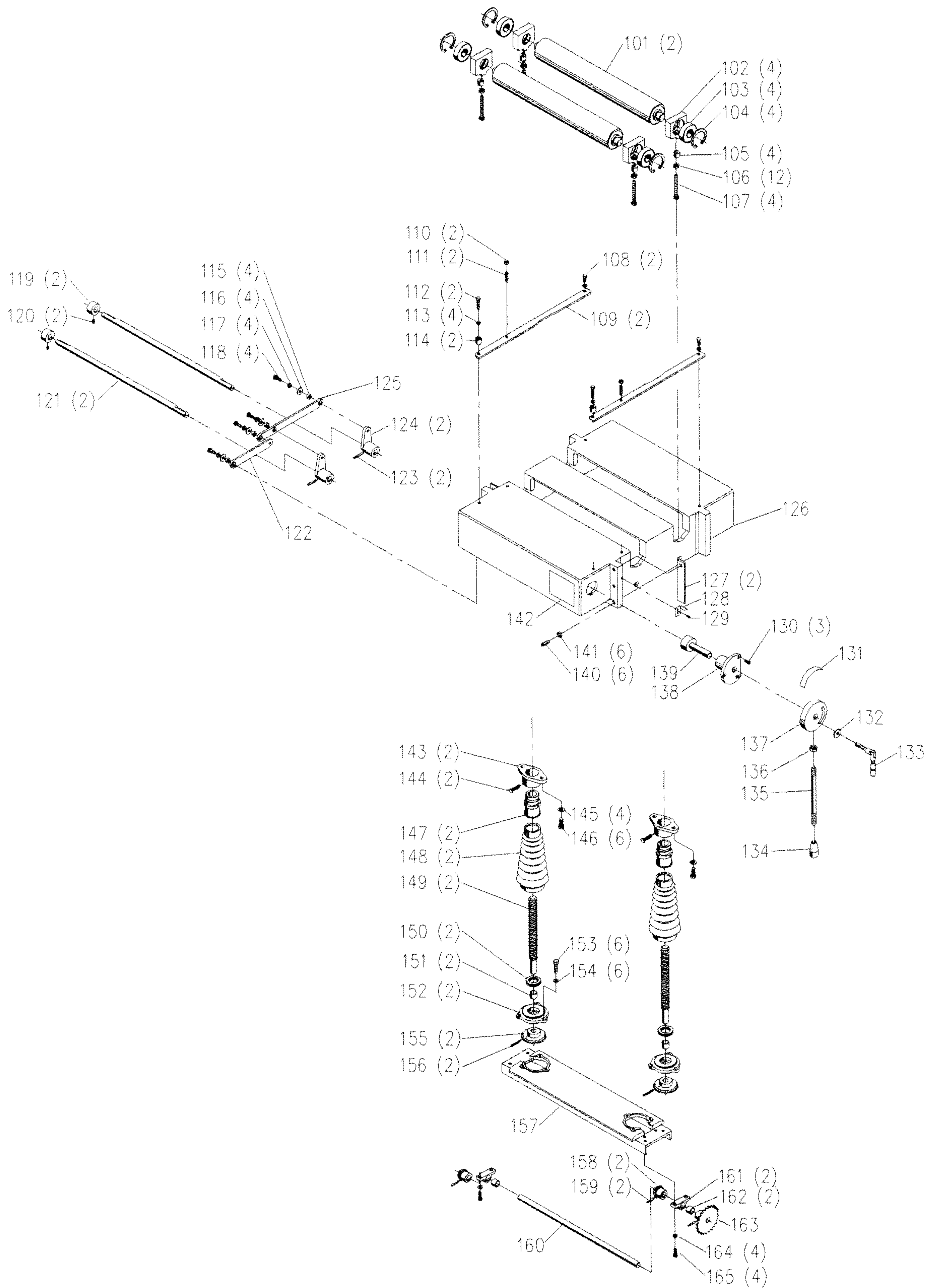


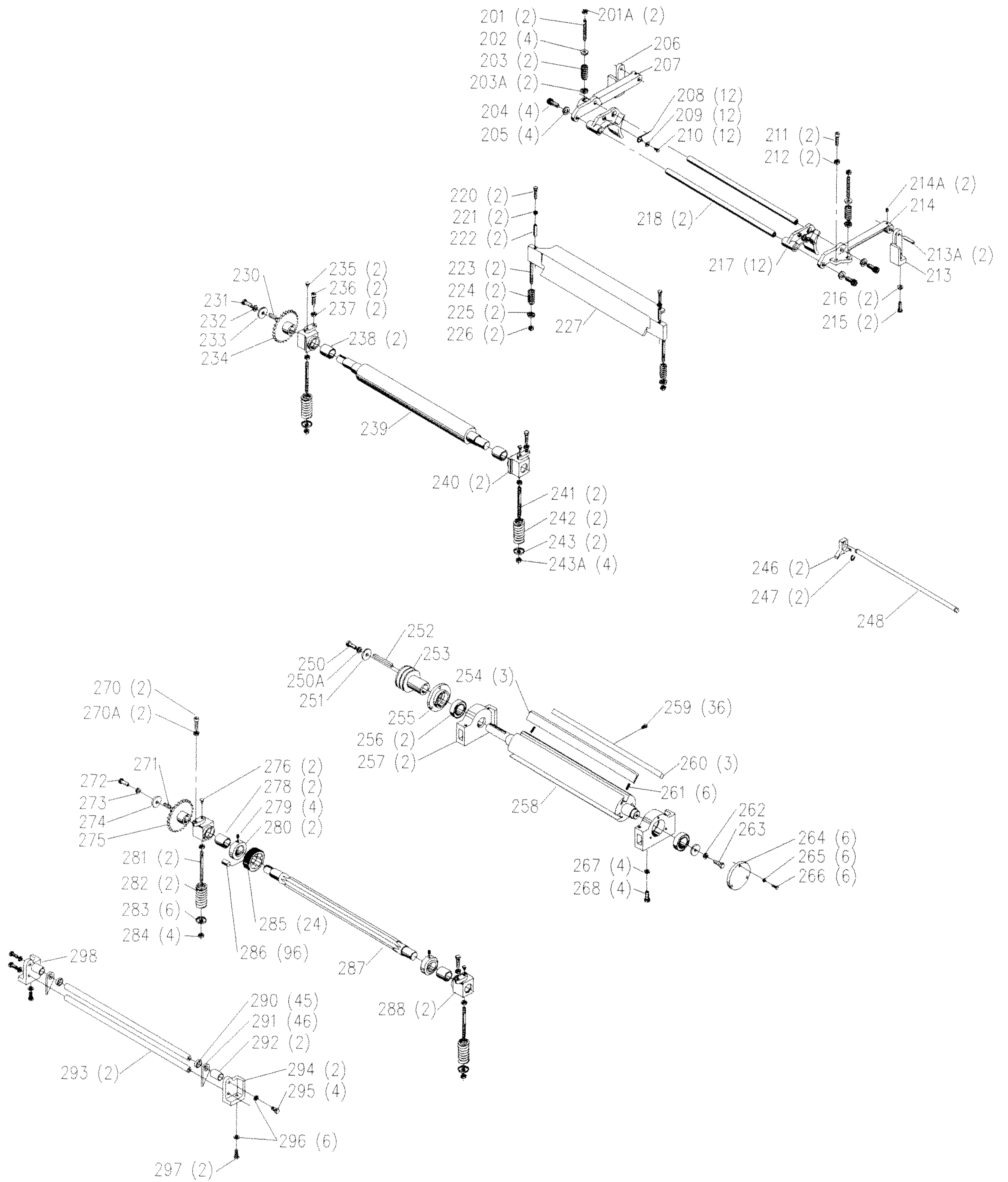
## REPLACEMENT PARTS

<u>REF. NO.</u>	<u>PART NUMBER</u>	<u>DESCRIPTION</u>	<u>REF. NO.</u>	<u>PART NUMBER</u>	<u>DESCRIPTION</u>
1	1342408	DUST HOOD	37	1342415	REAR COVER
2	1342409	DUST CHUTE, <i>INCL.</i> :	38	1349538	(DIN 931) M6 HEX HD SCR
2A	1349977	WARNING LABEL	38A	1340608	M6.4 FLAT WASHER
3	1345859	(DIN 7380) M6 X 12MM BUTTON HD SCR	39	1349564	CHAIN
4	1246140	(DIN 125) M6.4 FLAT WASHER	**	1349573	MASTER LINK
6	1349537	(DIN 912) M8 X 160MM HEX SOC HD SCR	40	1349557	SPROCKET SHAFT
7	1342410	TOP COVER, <i>INCL.</i> :	41	1349558	HUB
7A	1349982	WARNING LABEL	42	1349559	OIL CUP
7B	1349979	ENGAGE LABEL	43	1243336	(DIN 912) M6 X 20MM HEX SOC HD SCR
7C	1342452	NAMEPLATE	43A	1340654	(DIN 9021) M6.4 FLAT WASHER
11	1349693	BAFFLE SEAL	44	1243517	(DIN 125) M21 FLAT WASHER
12	1342412	CHIP DEFLECTOR	45	901-04-150-1111	3/8-16 X 3/8" HEX SOC SET SCR
13	1342411	SEAL	46	1342416	HANDWHEEL
14	1349678	UPPER BRACKET	47	1349562	KNOB
15	1246032	(DIN 933) M8 X 50MM HEX HD SCR	48	1349563	LEVER
16	1246017	(DIN 933) M8 X 30MM HEX HD SCR	50	1345934	(DIN 7380) M6 X 12MM BUTTON HD SCR
17	1246157	(DIN 7980) M8.1 LOCK WASHER	51	1349684	<i>RH</i> COVER
18	1243398	(DIN 934) M8 HEX NUT	52	1349685	<i>RH</i> BASE COVER
19	1349677	LOWER BRACKET	52A	1345859	(DIN 7380) M6 X 12MM BUTTON HD SCR
20	1349682	<i>LH</i> COVER, <i>INCL.</i> :	53	1341046	(DIN 84) M6 X 8MM CHEESE HD SCR
20A	1349975	FEED RATE CHART	54	1342417	COIL, (3PH, 200-220V)
21	1349674	SWITCH BOX	54A	1343581	COIL, (3PH, 440V)
22	402-07-111-5002	STUD	55	1349675	STRAIN RELIEF CLAMP
23	438-01-017-0101	MAGNETIC SWITCH	56	1342418	CONTACTOR, (3PH, 200-220V)
24	402-07-104-5007	SPACER	56A	1343582	CONTACTOR, , (3PH, 440V)
25	901-02-010-0567	#06-32 X 1/4" ROUND HD SCR	58	1243496	(DIN 934) M10 HEX NUT
26	1340100	SWITCH COVER ASSY	59	1347719	JUNCTION BOX
27	1342413	<i>LH</i> COLUMN BASE, <i>INCL.</i> :	60	1347720	TERMINAL STRIP
27A	1342453	WARNING LABEL	61	1243394	(DIN 84) M5 X 10MM CHEESE HD SCR
28	1243476	(DIN 934) M12 HEX NUT	62	1246001	(DIN 84) M5 X 12MM CHEESE HD SCR
29	1246065	(DIN 7980) M12.2 LOCK WASHER	63	1243394	(DIN 84) M5 X 10MM CHEESE HD SCR
30	1349978	DEPTH SCALE	64	1320101	(DIN 6797A) M5.3 EXT TOOTH WASHER
31	1349689	LIFT BOSS	65	1342420	BASE, <i>INCL.</i> :
32	1349688	WASHER	65A	1342454	NAMEPLATE
33	1349539	(DIN 912) M12 X 60MM HEX SOC HD SCR	66	1349683	HANDLE ASSY
34	1342414	<i>RH</i> COLUMN BASE	67	1349686	<i>LH</i> BASE COVER
35	1246035	(DIN 933) M10 X 30MM HEX HD SCR			
36	1243360	(DIN 7980) M10.2 LOCK WASHER		** NOT SHOWN	



## REPLACEMENT PARTS

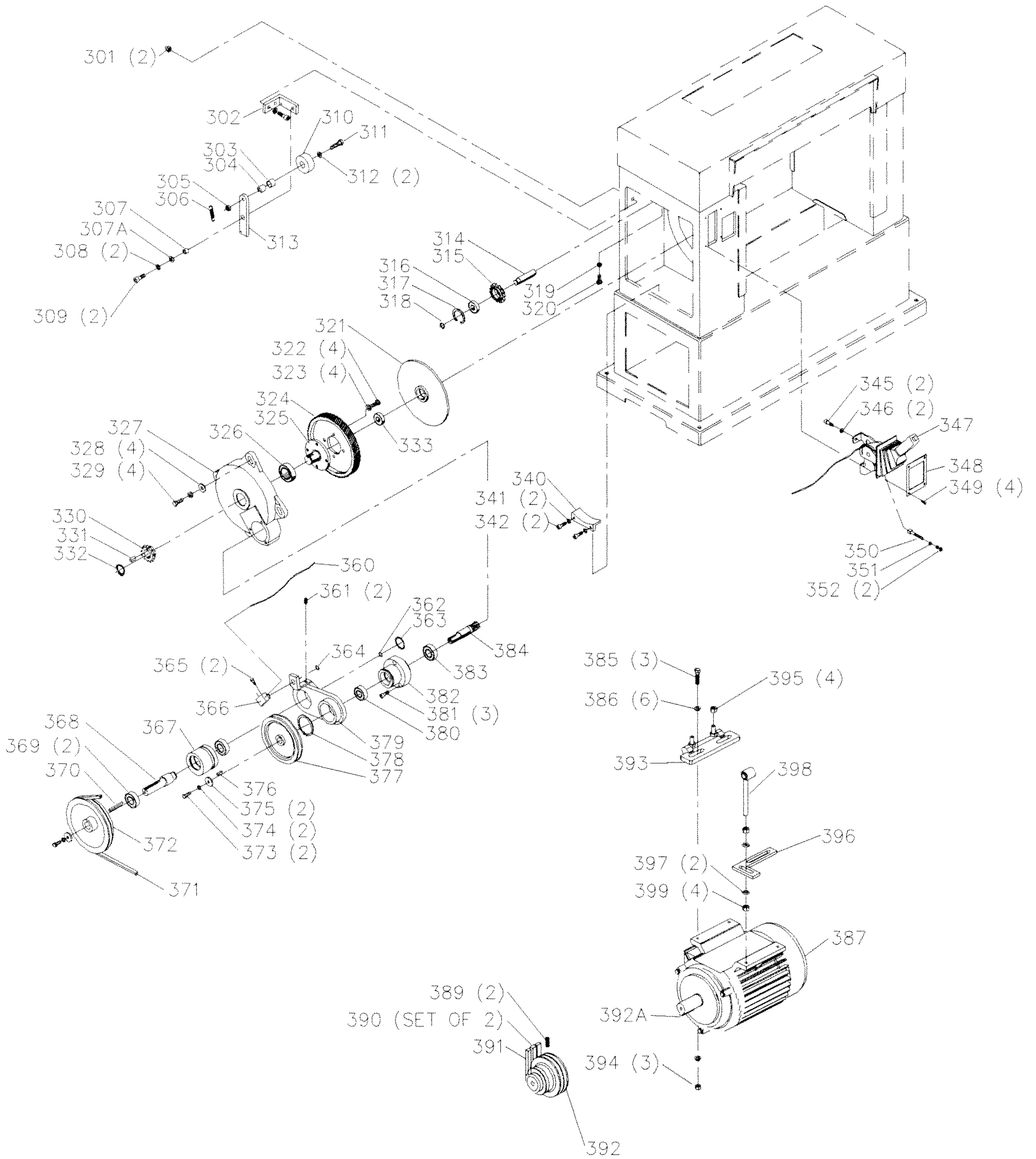
<u>REF. NO.</u>	<u>PART NUMBER</u>	<u>DESCRIPTION</u>	<u>REF. NO.</u>	<u>PART NUMBER</u>	<u>DESCRIPTION</u>
101	1342421	ROLLER	134	1349590	KNOB
102	1349578	SUPPORT	135	1349589	LEVER
103	920-04-022-4020	BALL BEARING	136	1243476	(DIN 934) M12 HEX NUT
104	1246190	INT RET RING	137	1349588	HUB
105	1349579	COLLAR	138	1349586	SUPPORT
106	1243398	(DIN 934) M8 HEX NUT	139	1349587	SHAFT
107	1349529	(DIN 933) M8 X 75MM HEX HD SCR	140	1243319	(DIN 915) M10 X 30MM HX SOC SET SCR
108	1246034	(DIN 933) M8 X 20MM HEX HD SCR	141	1243496	(DIN 934) M10 HEX NUT
109	1349574	GUIDE	142	1349983	ADJUSTMENT LABEL
110	1243398	(DIN 934) M8 HEX NUT	143	1349550	SUPPORT
111	1246053	(DIN 912) M8 X 25MM HEX SOC HD SCR	144	1246016	(DIN 933) M8 X 25MM HEX HD SCR
112	1246079	(DIN 933) M8 X 40MM HEX HD SCR	145	1243502	(DIN 125) M10 FLAT WASHER
113	1246157	(DIN 7980) M8.1 LOCK WASHER	146	1246018	(DIN 933) M10 X 25MM HEX HD SCR
114	1349575	COLLAR	147	1349548	COLLAR
115	1349585	ADAPTER	148	1349549	BOOT
116	1344330	M8 FLAT WASHER	149	1349546	ELEVATING SCR
117	1246157	(DIN 7980) M8.1 LOCK WASHER	150	1349545	THRUST BEARING
118	1246034	(DIN 933) M8 X 20MM HEX HD SCR	151	1349544	BEARING
119	1349582	BUSHING	152	1349543	SUPPORT
120	1341011	(DIN 916) M8 X 10MM HEX SOC SET SCR	153	1246016	(DIN 933) M8 X 25MM HEX HD SCR
121	1342422	ROD	154	1246157	(DIN 7980) M8.1 LOCK WASHER
122	1349584	LINK ( <i>SHORT</i> )	155	1349547	GEAR
123	1246185	(DIN 1481) M5 X 40MM SPRING PIN	156	1246185	(DIN 1481) M5 X 40MM SPRING PIN
124	1349580	ARM	157	1342424	PLATE
125	1349583	LINK ( <i>LONG</i> )	158	1349555	GEAR
126	1342423	TABLE	159	1246160	(DIN 1481) M5 X 32MM SPRING PIN
127	1349572	TABLE GUIDE	160	1342425	SHAFT
128	1349576	POINTER	161	1349552	SUPPORT
129	1243394	(DIN 84) M5 X 10MM CHEESE HD SCR	162	1349553	BEARING
130	1246056	(DIN 912) M6 X 12MM HEX SOC HD SCR	163	1349556	SPROCKET
131	1349980	DIRECTION ARROW	164	1246157	(DIN 7980) M8.1 LOCK WASHER
132	1243502	(DIN 125) M10 FLAT WASHER	165	1246016	(DIN 933) M8 X 25MM HEX HD SCR
133	1349591	LOCK LEVER			



## REPLACEMENT PARTS

<u>REF. NO.</u>	<u>PART NUMBER</u>	<u>DESCRIPTION</u>	<u>REF. NO.</u>	<u>PART NUMBER</u>	<u>DESCRIPTION</u>
201	1349632	STUD	*	1342448	CUTTERHEAD ASSY, CONST OF:
201A	1243496	(DIN 934) M10 HEX NUT	250	1349531	(DIN 933) M10 X 25MM HEX HD SCR
202	1349630	SPECIAL WASHER	250A	1243360	(DIN 7980) M10.2 LOCK WASHER
203	1349631	SPRING	251	1349597	WASHER
203A	1349635	SPECIAL WASHER	252	1349530	KEY
204	1246073	(DIN 912) M12 X 30MM HEX SOC HD SCR	253	1342429	PULLEY
205	1246179	(DIN 7980) M12.2 LOCK WASHER	254	22-609	KNIVES (SET OF 3)
206	1349623	BRACKET LH	255	1342431	LH COVER
207	1349627	SUPPORT LH	256	920-04-022-4014	BALL BEARING
208	1349626	SPRING	257	1342433	SUPPORT
209	1340622	M6.4 FLAT WASHER	258	1342434	CUTTERHEAD
210	1246014	(DIN 933) M6 X 15MM HEX HD SCR	259	1349600	LOCKING SCR
211	1246096	(DIN 912) M10 X 40MM HEX SOC HD SCR	260	1342435	LOCKING BAR
212	1243496	(DIN 934) M10 HEX NUT	261	1349598	SPRING
213	1349619	BRACKET RH	262	1243360	(DIN 7980) M10.2 LOCK WASHER
213A	1349628	PIN	263	1246018	(DIN 933) M10 X 25MM HEX HD SCR
214	1349661	SUPPORT RH	264	1342436	RH COVER
214A	1341011	(DIN 916) M8 X 10MM HEX SOC SET SCR	265	1243520	(DIN 7980) M6.1 LOCK WASHER
215	1246035	(DIN 933) M10 X 30MM HEX HD SCR	266	1246015	(DIN 933) M6 X 20MM HEX HD SCR
216	1349624	RETAINER	267	1243360	(DIN 7980) M10.2 LOCK WASHER
217	1349625	CHIP BREAKER	268	1246035	(DIN 933) M10 X 30MM HEX HD SCR
218	1342426	SHAFT	270	1246096	(DIN 912) M10 X 40MM HEX SOC HD SCR
220	1246079	(DIN 933) M8 X 40MM HEX HD SCR	270A	1243496	(DIN 934) M10 HEX NUT
221	1243398	(DIN 934) M8 HEX NUT	271	1341952	KEY
222	1349637	PIN	272	1349531	(DIN 933) M10 X 25MM HEX HD SCR
223	1349634	STUD	273	1243360	(DIN 7980) M10.2 LOCK WASHER
224	1349636	SPRING	274	1349611	WASHER
225	1349635	SPECIAL WASHER	275	1349610	SPROCKET
226	1243496	(DIN 934) M10 HEX NUT	276	1349559	OIL CUP
227	1342427	PRESSURE BAR	278	1349609	BEARING
230	1341952	KEY	279	1330200	(DIN 916) M8 X 12MM HEX SOC SET SCR
231	1349531	(DIN 933) M10 X 25MM HEX HD SCR	280	1349607	BUSHING
232	1243360	(DIN 7980) M10.2 LOCK WASHER	281	1349612	STUD (125 MM)
233	1349611	WASHER	282	1349613	SPRING
234	1349618	SPROCKET	283	1349614	SPECIAL WASHER
235	1349559	OIL CUP	284	1243496	(DIN 934) M10 HEX NUT
236	1246096	(DIN 912) M10 X 40MM HEX SOC HD SCR	285	1349604	GEAR WHEEL
237	1243496	(DIN 934) M10 HEX NUT	286	1349606	BUSHING (SET OF 4)
238	1349617	BEARING	287	1342437	INFEED SHAFT
239	1342428	OUTFEED ROLLER	288	1349608	BEARING BLOCK
240	1349616	BEARING BLOCK	290	1349640	BUSHING
241	1349892	STUD (105 MM)	291	1349639	FINGER
242	1349613	SPRING	292	1349642	BUSHING
243	1349614	SPECIAL WASHER	293	1342439	ROD
243A	1243496	(DIN 934) M10 HEX NUT	294	1349638	BRACKET RH
*	1349605	KNIFE GAGE ASSY, CONST OF:	295	1246018	(DIN 933) M10 X 25MM HEX HD SCR
246	1349601	KNIFE BLOCK	296	1243360	(DIN 7980) M10.2 LOCK WASHER
247	1330670	EXT RET RING	297	1246035	(DIN 933) M10 X 30MM HEX HD SCR
248	1349602	ROD	298	1349621	BRACKET LH

\* NOT SHOWN ASSEMBLED



## REPLACEMENT PARTS

<u>REF. NO.</u>	<u>PART NUMBER</u>	<u>DESCRIPTION</u>	<u>REF. NO.</u>	<u>PART NUMBER</u>	<u>DESCRIPTION</u>
301	1341996	(DIN 985) M10 LOCK NUT	361	1243494	(DIN 916) M10 X 12MM HX SOC SET SCR
302	1349671	LINK SUPPORT	362	1341161	EXT RET RING
303	1349668	BEARING	363	1246190	INT RET RING
304	1349669	BUSHING	364	1245115	EXT RET RING
305	1243496	(DIN 934) M10 HEX NUT	365	1246004	(DIN 912) M6 X 16MM HEX SOC HD SCR
306	1349673	SPRING	366	1349658	CLAMP BLOCK
307	1349672	BUSHING	367	1349655	HOUSING
307A	1243502	(DIN 125) M10 FLAT WASHER	368	1349654	PULLEY SHAFT
308	1243360	(DIN 7980) M10.2 LOCK WASHER	369	920-04-020-5360	BALL BEARING
309	1246018	(DIN 933) M10 X 25MM HEX HD SCR	370	1349534	KEY
310	1349667	WHEEL	371	1349657	BELT (A-24)
311	1246029	(DIN 933) M10 X 40MM HEX HD SCR	372	1349656	PULLEY
312	1243502	(DIN 125) M10 FLAT WASHER	373	1246054	(DIN 912) M8 X 20MM HEX SOC HD SCR
313	1349670	LINK	374	1246157	(DIN 7980) M8.1 LOCK WASHER
314	1349666	SHAFT	375	1349652	RETAINER
315	1349665	CHAIN GEAR	376	1330139	KEY
316	1086894	BALL BEARING	377	1349651	PULLEY
317	1246003	INT RET RING	378	1349533	EXT RET RING
318	1243407	EXT RET RING	379	1349653	BRACKET
319	1243496	(DIN 934) M10 HEX NUT	380	1320106	BALL BEARING
320	1246018	(DIN 933) M10 X 25MM HEX HD SCR	381	1243530	(DIN 912) M8 X 30MM HEX SOC HD SCR
321	1349647	GEAR HOUSING PLATE	382	1349650	HOUSING
322	1246115	(DIN 933) M10 X 20MM HEX HD SCR	383	920-04-020-5360	BALL BEARING
323	1243360	(DIN 7980) M10.2 LOCK WASHER	384	1349649	PINION GEAR
324	1349643	GEAR	385	1246035	(DIN 933) M10 X 30MM HEX HD SCR
325	1349644	GEAR SHAFT	386	1243360	(DIN 7980) M10.2 LOCK WASHER
326	920-04-022-4022	BALL BEARING	387	1342440	MOTOR, 3PH, 7-1/2HP
327	1349646	GEAR HOUSING	389	1243494	(DIN 916) M10 X 12MM HX SOC SET SCR
328	1243502	(DIN 125) M10 FLAT WASHER	390	1342442	BELT (A-72), SET OF 2
329	1246035	(DIN 933) M10 X 30MM HEX HD SCR	391	1349691	BELT (A-40)
330	1349648	SPROCKET	392	1342449	MOTOR PULLEY
331	1349532	KEY	392A	1347704	KEY
332	1243370	EXT RET RING	393	1342443	MOTOR BRACKET
333	920-04-020-5335	BALL BEARING	394	1243496	(DIN 934) M10 HEX NUT
340	1349660	BRAKE	395	1243476	(DIN 934) M12 HEX NUT
341	1246157	(DIN 7980) M8.1 LOCK WASHER	396	1342445	BRACKET
342	1246122	(DIN 912) M8 X 16MM HEX SOC HD SCR	397	1341945	(DIN 125) M12 FLAT WASHER
345	1246054	(DIN 912) M8 X 20MM HEX SOC HD SCR	398	1342447	ADJ SCR
346	1246157	(DIN 7980) M8.1 LOCK WASHER	399	1243476	(DIN 934) M12 HEX NUT
347	1349662	BRAKE LEVER ASSY	**	1349998	10 X 14MM OPEN END WRENCH
348	1349664	BEZEL	**	1344741	4MM T-HANDLE WRENCH
349	1243394	(DIN 84) M5 X 10MM CHEESE HD SCR	**	422-31-101-0002	17 X 19MM OPEN END WRENCH
350	1349663	STUD	**	422-30-101-0002	8MM HEX WRENCH
351	1340622	M6.4 FLAT WASHER	**	428-07-101-0002	6MM HEX WRENCH
352	1243456	(DIN 934) M6 HEX NUT	**	432-07-101-0004	5MM HEX WRENCH
360	1349659	CABLE			

\*\* NOT SHOWN

### STANDARD SAFETY EQUIPMENT

In order to promote tool safety, Delta International Machinery Corp. strictly enforces the policy of repairing or replacing any damaged or missing standard safety equipment on machines presented to Delta Authorized Service Centers for service/repair. Any product which is presented to a Delta Authorized Service Center for repairs which contains missing or damaged standard safety equipment will have that equipment repaired or replaced and the customer will be charged for any such service/repairs. Customers can avoid such charges only if the missing safety component is supplied to the service center at the time of repair.

This parts list is provided to aid in obtaining service parts. Copies of the instruction and maintenance literature can be obtained through the Delta Technical Publications Department or through your local service outlet.