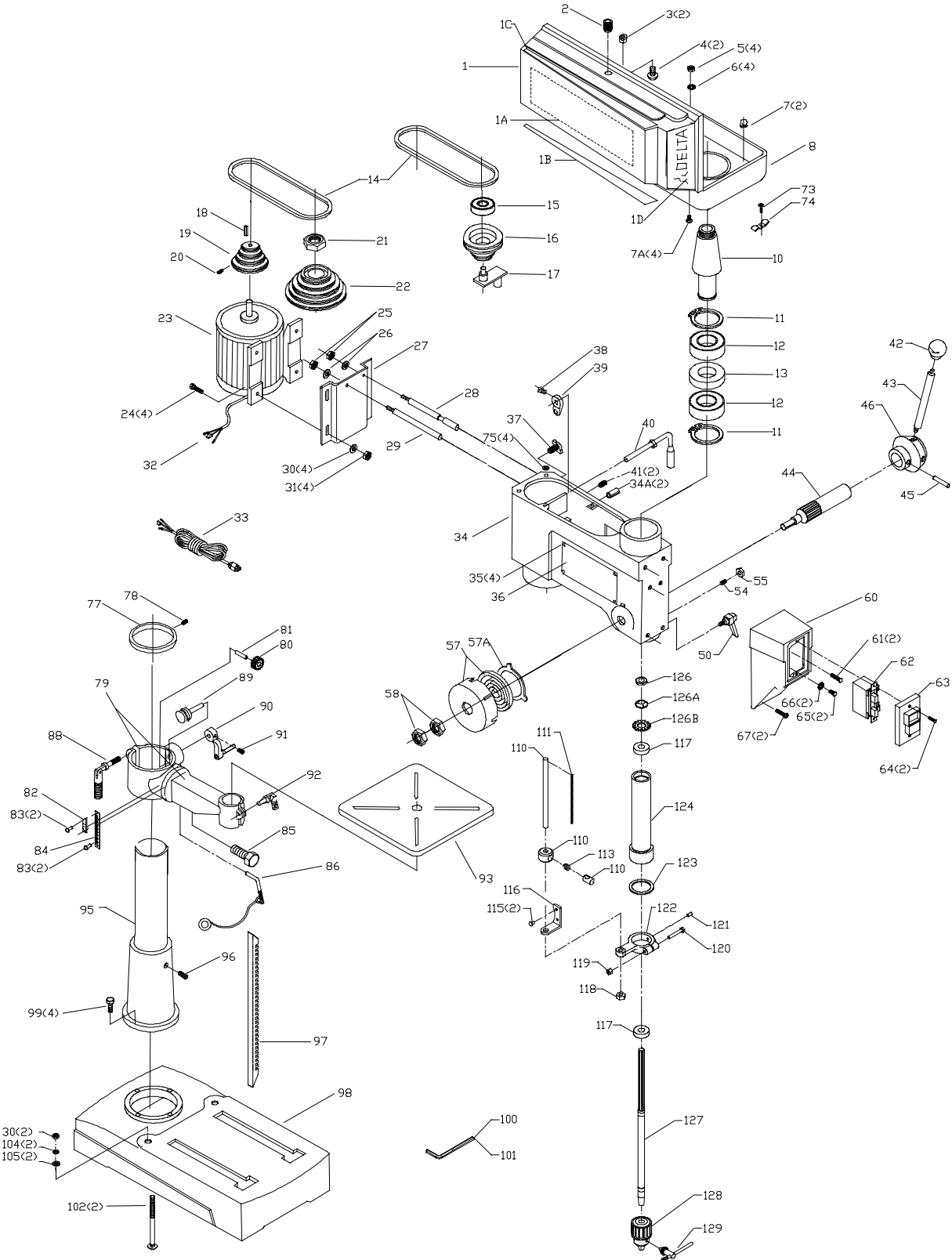




17-965
16-1/2" FLOOR MODEL
DRILL PRESS

DP-4D-3
PART NO. 900610
Revised: 08-31-04



REPLACEMENT PARTS

Ref.	No.	Part No.	Description	Ref.	No.	Part No.	Description
	1	901169	UPPER PULLEY COVER		58	902-01-020-1227	1/2-20 JAM NUT
	1A	901193	SPEED CHART, T2		60	1346235	SWITCH BOX
		1346225	SPEED CHART, T1		61	1246001	M5 X 12MM CHEESE HD SCREW
	1B	1346222	NAMEPLATE (LEFT)		62	1340095	SWITCH
	1C	1346223	NAMEPLATE (RIGHT)		63	1340100	SWITCH COVER
	1D	901338	NAMEPLATE (FRONT), T2		64	1347694	M4.2 X 25MM PAN HD SCREW
		1346221	NAMEPLATE (FRONT), T1		65	1310143	M5 X 8MM PAN HD SCREW
	2	1310065	KNOB		66	1320101	M5.3 EXT TOOTH WASHER
	3	1310057	STRAIN RELIEF		67	1344641	M5 X 25MM CHEESE HD SCREW
	4	1310547	M4.2 X 12MM PAN HD SCREW		73	1342455	M5 X 10MM PAN HD SCREW, T2
	5	1243569	M4 HEX NUT, T2		74	1340719	CLAMP, T2
		1246002	M6 X 12MM CHEESE HD SCREW, T1		75	1343304	1/4" RUBBER WASHER, T2
	6	1320102	M4.3 EXT TOOTH WASHER, T2		77	901168	RING, T2
		1310062	M6.4 FLAT WASHER, T1			1312009	RING, T1
	7	1310056	GROMMET		78	1243339	M6 X 8MM HEX SOC SET SCREW
	7A	1243501	M4 X 10MM CHEESE HD SCREW, T2		79	901187	TABLE BRACKET ASSY, INCL:
	8	901189	L/PULLEY COVER W/HINGES (NOTE A), T2		80	1311007	PINION GEAR
		1340705	L/PULLEY COVER W/HINGES (NOTE A), T1		81	1311008	SHAFT
		1346228	SLEEVE		82	1311016	INDICATOR
	10	1311060	RETAINING RING		83	1310016	5MM DRIVE SCREW
	11	920-04-010-7266	BEARING		84	901176	SCALE, T2
	12	1311059	SPACER			1311015	SCALE, T1
	13	1346231	V-BELT		85	1311012	BOLT
	14	1312028	BEARING		86	1346077	LOCK PIN W/CABLE
	15	1346232	PULLEY		88	1311017	HANDLE
	16	1312029	SHAFT		89	n A06912	WORM GEAR
	17	1311071	KEY		90	1344257	HANDLE ASSY
	18	1312024	PULLEY		91	1243321	M6 X 10MM HEX SOC SET SCREW
	19	1330200	M8 X 12MM HEX SOC SET SCREW		92	1311018	HANDLE W/STUD
	20	1311061	NUT		93	901186	TABLE, T2
	21	1346233	PULLEY			1346236	TABLE, T1
	22	908973	MOTOR		95	901340	COLUMN ASSY, T2
	23	1246034	M8 X 20MM HEX HD SCREW			1310595	COLUMN ASSY, INCL., T1
	24	1243476	M12 HEX NUT		96	1311003	M10 X 12MM HEX SOC SET SCREW
	25	904-02-020-1705	1/2" LOCK WASHER		97	1312008	RACK
	26	1311029	BRACKET		98	1312001	BASE
	27	1312012	ROD		99	1246029	M10 X 40MM HEX HD SCREW
	28	1312031	ROD		100	428-06-101-0002	3MM HEX WRENCH
	29	1243526	M8.4 FLAT WASHER		101	432-07-101-0004	5MM HEX WRENCH
	30	1243398	M8 HEX NUT		102	1344329	M8 X 125MM CARRIAGE HD SCREW
	31	1340706	MOTOR CORD		104	1246157	M8.1 LOCK WASHER
	32	1340707	POWER CORD		105	1243398	M8 HEX NUT
	33	901190	HEAD BODY, T2		110	A02567	STOP ROD
	34	1346242	HEAD BODY, T1		111	901197	SCALE, T2
	34A	1246110	M6 X 24MM SPRING PIN			1346044	SCALE, T1
	35	1310016	5MM DRIVE SCREW		113	1346046	SPRING
	36	900417	WARNING LABEL, T2		115	1246155	M6 X 12MM FLAT HD SCREW
		1346224	WARNING LABEL, T1		116	1346237	MOUNTING BRACKET
	37	901171	SCREW, T2		117	920-04-020-5335	BEARING
		1311028	SCREW, T1		118	1343492	M12 LOCK NUT
	38	1310105	M8 X 16MM HEX HD SCREW		119	1346049	NUT
	39	1311026	ECCENTRIC		120	1346205	M6 X 45MM HEX HD SCREW
	40	1312011	HANDLE		121	1243303	M6 X 12MM HEX SOC SET SCREW
	41	1311003	M10 X 12MM HEX SOC SET SCREW		122	901191	STOP COLLAR, T2
	42	1346024	KNOB			1346238	STOP COLLAR, T1
	43	1346025	HANDLE		123	1311051	RUBBER WASHER
	44	1340708	PINION ASSY, INCL:		124	1346239	QUILL
	45	1330410	M5 X 20MM SPRING PIN		126	1311056	NUT
	46	1346026	HUB		126A	1311055	RING
	50	901192	HANDLE		126B	1311054	M17.5 FLAT WASHER
	54	1311048	SCREW		127	1346241	SPINDLE ASSY
	55	1243496	M10 HEX NUT		128	1312022	5/8" CHUCK, INCL:
	57	1310082	SPRING ASSEMBLY		129	1313105	CHUCK KEY
	57A	1311046	SPRING RETAINER				

STANDARD SAFETY EQUIPMENT

In order to promote tool safety, Delta Machinery strictly enforces the policy of repairing or replacing any damaged or missing standard safety equipment on machines presented to Delta Authorized Service Centers for service/repairs. Any product that is presented to a Delta Authorized Service Center for repair with damaged or missing standard safety equipment will have that equipment repaired or replaced and the customer will be charged for any such service/repairs. Customers can avoid such charges only if the missing safety component is supplied to the service center at the time of repair.

This parts list is provided to aid in obtaining service parts. Copies of the instruction and maintenance literature can be obtained through the Delta Technical Publications Department, your service outlet, or by visiting the Delta Website @ www.deltamachinery.com.