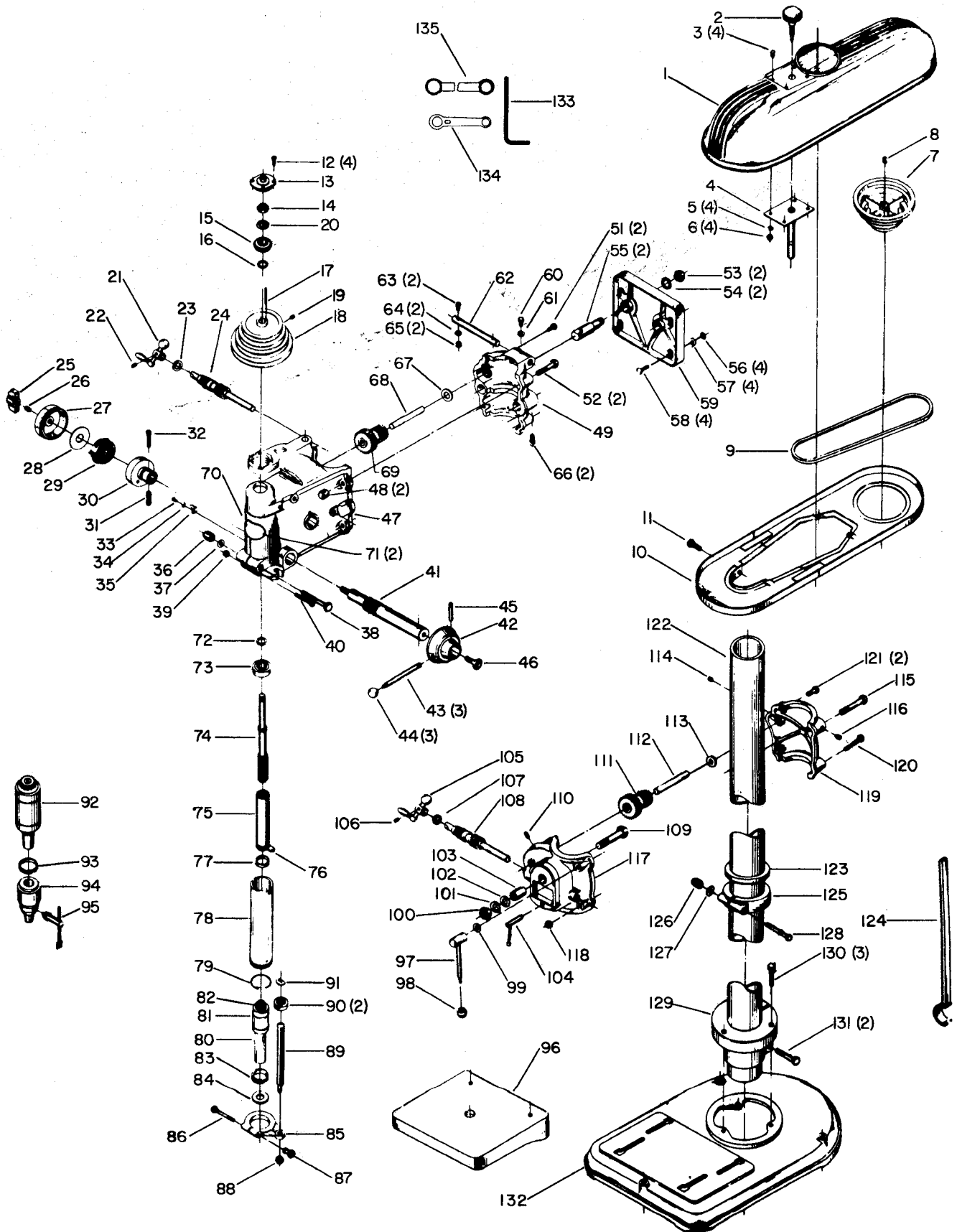


1370, 17-205, 17-206, 17-207 17-208, 17-210, 17-211, 17-212, 17-213 17" DRILL PRESS (old style with DP-600 Z Head Casting)



Replacement Parts

Ref. No.	Part No.	Description	Ref. No.	Part No.	Description
1	400-00-354-5002	Upper Guard	60	901-01-060-0606	5/16-18 X 5/8" Hex Hd. Cap Scr.
2	Cannot Furnish	Pin Assembly	61	904-01-010-1620	11/32 X 11/16 X .0625 Washer
3	901-02-010-0509	1/4-20 X 1/2" Rd. Hd. Scr.	62	402-05-071-5006	Pin for Belt Guard
4	Cannot Furnish	Stud Assembly	63	Cannot Furnish	5/16 X 1" Rd. Hd. Stove Bolt
5	904-02-020-1702	1/4 X 7/16 X 1/16" Lockwasher	64	904-01-010-1620	11/32 X 11/16 X .0625 Washer
6	902-01-120-1034	1/4-20 Hex Nut	65	902-01-010-1300	5/16-18 Hex Nut
7	41-822	1/2" Bore Hi-Speed Motor	66	901-04-020-0310	3/8-16 X 5/8" Set Scr.
		Pulley, Incl:	67	904-07-010-5575	5/8 X 1 X 1/32" Fiber Washer
8	901-04-190-0201	5/16-18 X 5/16" Soc. Set Scr.	68	402-05-106-5010	Compound Gear Shaft
7	41-823	5/8" Bore Hi-Speed Motor	69	402-05-051-5010	Compound Gear
		Pulley, Incl:	70	Cannot Furnish	Nameplate
8	901-04-190-0201	5/16-18 X 5/16" Soc. Set Scr.	71	901-06-110-3000	#6 Rd. Hd. Self-Tap. Scr.
7	41-824	3/4" Bore Hi-Speed Motor	72	904-01-030-1645	Special Washer
		Pulley, Incl:	73	920-08-040-5344	Ball Bearing
8	901-04-190-0201	5/16-18 X 5/16" Soc. Set Scr.	74	402-05-106-5007	Spindle
7	41-825	7/8" Bore Hi-Speed Motor	75	402-05-105-5004	Spindle Sleeve, See Note B
		Pulley, Incl:	76	927-01-201-3720	Drive Pinion Key
8	901-04-190-0201	5/16-18 X 5/16" Soc. Set Scr.	77	904-15-021-4139	1" Dia. X 1/4" w. Garter Spring
7	Cannot Furnish	1/2" Bore Slo-Speed Motor	78	402-07-077-5001	Quill, See Note B
		Pulley, Incl:	79	904-15-021-4138	Garter Spring
8	901-04-190-0201	5/16-18 X 5/16" Soc. Set Scr.	80	Use 17-881	Lower Spindle #2 M.T., Incl: (See Note B)
7	41-813	5/8" Bore Slo-Speed Motor	81	402-07-051-5005	Pinion
		Pulley, Incl:	82	901-03-010-0750	5/16-18 X 1" Soc. Hd. Cap Scr.
8	901-04-190-0201	5/16-18 X 5/16" Soc. Set Scr.	83	902-07-020-7176	Bearing Closure Nut
7	41-814	3/4" Bore Slo-Speed Motor	84	904-07-061-2942	Leather Shock Ring
		Pulley, Incl:	85	402-05-014-5005	Yoke
8	901-04-190-0201	5/16-18 X 5/16" Soc. Set Scr.	86	901-01-060-0674	5/16-24 X 2-3/4" Hex Hd. Cap Scr.
7	41-815	7/8" Bore Slo-Speed Motor	87	931-02-141-4089	Special Hex Nut
		Pulley, Incl:	88	902-01-040-1004	7/16-14 Jam Nut
8	901-04-190-0201	5/16-18 X 5/16" Soc. Set Scr.	89	402-05-108-5001	Stop Rod
9	49-051	Hi-Speed V-Belt	90	902-08-061-3079	Knurled Nut
9	49-025	Slo-Speed V-Belt	91	904-01-101-4955	Stop Nut Washer
10	400-00-354-5002	Lower Guard	92	Use 17-882	Lower Spindle Ass'y, (See Note B)
11	901-20-210-3800	5/16-18 X 7/8" Fil. Hd. Scr.	93	902-07-020-7176	Bearing Closure Nut
12	901-02-551-2858	#10-32 X 7/16" Fil. Hd. Cap Scr.	94	956-01-011-4153	6A-33 Jacobs Chuck w/Key, See Note B
13	402-05-020-5002	Bearing Cap	95	1200490	Key for Jacobs Chuck
14	902-01-200-9847	Special Nut			
15	920-08-020-5350	Snap Ring Bearing	96	402-05-091-5001	Tilt Table
16	904-01-030-1645	Special Washer	*	402-05-314-5004	Table Bracket Ass'y., Incl:
17	927-03-010-2661	3/16 X 3/16 X 2" Straight Key	97	402-05-327-5002	Handle Incl:
18	926-06-991-4688	Hi-Speed Pulley, Incl:	98	931-01-011-3519	Ball
19	901-04-190-0201	5/16-18 X 5/16" Soc. Set Scr.	99	904-10-031-3893	Special Washer
20	904-05-010-6664	19/32 X 1-3/16 X 1/32" Lockwasher	100	902-01-010-1245	3/4-10 Hex Nut
18	926-06-991-4686	Slo-Speed Pulley, Incl:	101	904-02-020-1707	Lockwasher
19	901-04-190-0201	5/16-18 X 5/16" Soc. Set Scr.	102	904-01-031-4954	Washer
20	904-05-010-6664	19/32 X 1-3/16 X 1/32" Lockwasher	103	402-05-106-6002	Sleeve
21	930-05-991-4787	Ball Crank, Incl:	104	402-05-371-5002	Index Pin
22	901-04-190-0206	5/16-18 X 5/16" Soc. Set Screw	105	930-05-991-4787	Ball Crank, Incl:
23	902-07-030-7179	Bearing Closure Spanner Nut	106	901-04-190-0206	5/16-18 X 5/16" Soc. Set Scr.
24	402-05-406-5008	Worm Shaft Assembled	107	902-07-030-7179	Bearing Closure Spanner Nut
25	931-03-011-4097	Handknob	108	402-05-406-5008	Worm Shaft Assembled
26	928-01-021-4125	Spring	109	901-01-060-0630	3/4-10 X 3-1/2" Hex Hd. Cap Scr.
27	402-05-331-5002	Return Spring Housing Cover Ass'y.	110	901-04-150-0205	5/16-18 X 1/4" Hdless. Set Screw
28	904-01-021-3581	Spacer Disk	111	402-05-051-5010	Compound Gear
29	928-08-001-4141	Pinion Shaft Return Spring	112	402-05-106-5010	Compound Gear Shaft
30	402-05-012-5003	Return Spring Housing	113	904-07-010-5575	Fiber Washer
31	402-05-112-5003	Spring Adjusting Scr.	114	901-04-190-0207	5/16-18 X 1/2" Soc. Set Scr.
32	901-02-050-0701	1/4-20 X 3/4" Fil. Hd. Cap Scr.	115	901-01-060-0643	1/2-13 X 4" Hex Hd. Cap Scr.
33	901-02-010-0509	1/4-20 X 1/2" Rd. Hd. Scr.	116	901-04-190-0201	5/16-18 X 5/16" Soc. Set Scr.
34	904-01-010-1603	1/4 X 9/16 X 3/64" Washer	117	C.F.† Separately	Bracket, Use 402-05-314-5003
35	402-05-075-5001	Indicator Pointer	118	902-01-020-5438	7/16-14 Jam Nut
36	902-01-040-1004	7/16-14 Clamp Nut	119	C.F.† Separately	Cap, Use 402-05-314-5003
37	904-01-031-2925	29/64 X 3/4 X 1/16" Washer	120	901-01-060-0637	7/16-14 X 3-3/4" Hex Hd. Cap Scr.
38	901-01-060-0633	7/16-14 X 3-1/4" Hex Hd. Cap Scr.	121	901-01-060-0615	7/16-14 X 1-3/4" Hex Hd. Scr.
39	902-01-200-9706	1/4-20 Hex Nut	122	17-763	3-1/2 X 60" Column (Floor Model)
40	901-02-050-0712	1/4-20 X 2-3/4" Fil. Hd. Scr.	122	17-764	3-1/2 X 38-1/2" Column (Bench Model)
41	402-05-406-5006	Pinion, Incl.:	123	920-52-991-3986	Rack Thrust Bearing
**	928-01-021-3378	Spring	124	402-05-351-5003	Rack w/Hook
**	921-01-010-0028	Ball	125	402-05-389-5001	Collar Ass'y., Incl:
42	11-969	Hub Ass'y., Incl:	126	902-01-040-1004	7/16-14 Clamp Nut
43	1202603	Stud	127	904-10-031-2097	Special Washer
44	931-01-011-3519	Ball	128	901-01-060-0631	7/16-14 X 4" Hex Hd. Cap Scr.
45	905-04-041-1983	Pin	129	402-07-005-5002	Base Flange
46	901-04-260-1523	3/8-24 X 5/8" Thumb Scr.	130	901-01-060-0668	1/2-20 X 1-3/4" Hex Hd. Scr.
47	Cannot Furnish	Head	131	901-01-060-0675	7/16-20 X 3" Hex Hd. Cap Scr.
48	902-01-040-1004	7/16-14 Clamp Nut	132	402-07-005-5002	Floor Type Base
49	Cannot Furnish	Cap	133	Cannot Furnish	5/16" Hex Key Wrench
51	901-01-060-0615	7/16-14 X 1-3/4" Hex Hd. Cap Scr.	134	40-526	Wrench
52	901-01-060-0633	7/16-14 X 3-1/4" Hex Hd. Cap Scr.	135	Cannot Furnish	Wrench
53	902-01-201-2583	3/4-16 Hex Nut			
54	904-03-020-1753	3/4" Shakeproof Washer	*	NOT SHOWN ASSEMBLED	
55	402-05-071-5004	Stud	**	NOT SHOWN	
56	902-01-010-1300	5/16-18 Hex Nut	†	C.F. = Cannot Furnish	
57	904-01-010-1620	11/32 X 11/16 X .0625 Washer			
58	901-11-020-0806	5/16-18 X 1-1/2" Car. Bolt			
59	Cannot Furnish	Motor Plate			

SERVICE NOTES:

A - These parts as shown are no longer available. In case of replacement of either the upper or lower guard, part no. 400-00-354-5002 must be ordered as a complete guard assembly.

B - Quill and lower Spindle Assembled use part no. 402-07-377-5001, #2 M.T. and part no. 402-07-377-5002, 1/2" Chuck.