



BIESEMEYER® MODEL 78-968 ANTI-KICKBACK SNAP-IN SPREADER

for Delta 12" and 14" Tilting Arbor Saws

COMPONENTS

1. Splitter
2. 1/2" mounting screw for storing splitter
(on Biesemeyer T-Square Blade Guard Systems)
3. Splitter mounting bracket
4. 5/16-18 x 1" hex head screws (2)
5. 1/4-20 x 2" hex head screw
6. 5/16" flat washers (2)
7. Flat Washer
8. 1/4-20 Lock nut

IMPORTANT: This splitter is intended for use with basket style blade guards only!

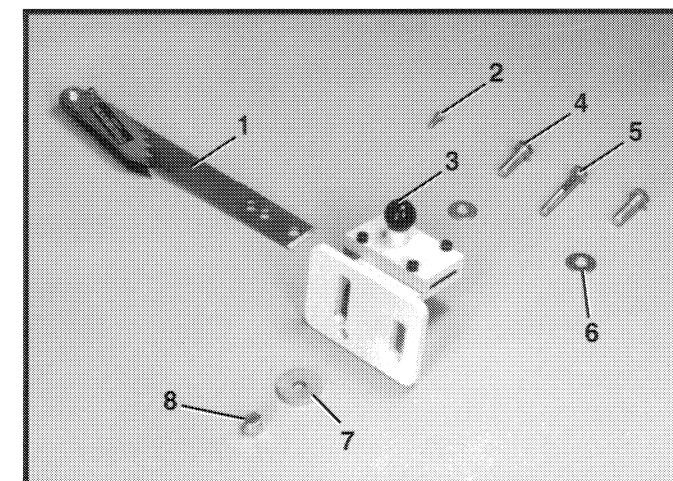


Fig. 1

ASSEMBLY

1. **Disconnect the machine from the power source.**
2. Remove saw blade, existing blade guard and splitter mounting assemblies from the machine.
3. Align the slotted holes in splitter mounting bracket (A) Fig. 2, with the threaded holes (B) in the trunnion and fasten with two 5/16-18 x 1" long hex head screws (C) (one of which is shown) and two 5/16" flat washers (D).
NOTE: Just snug-up mounting screws at this time to hold splitter mounting bracket in position.

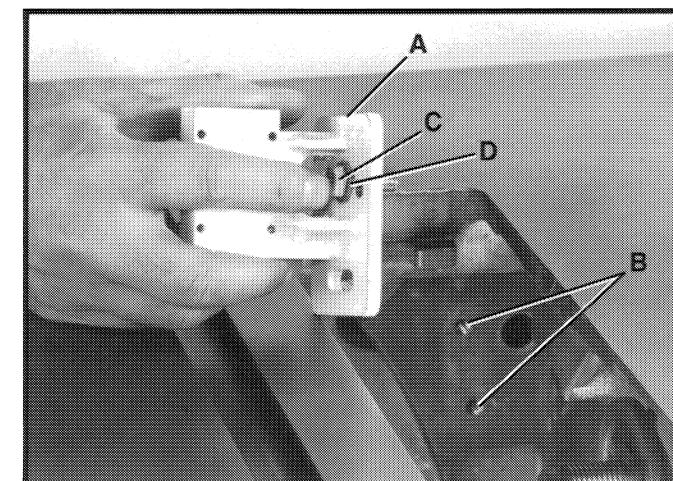


Fig. 2

4. Insert 1/4-20 x 2" hex head screw (E) Fig. 3, into hole (F) of splitter mounting bracket (A).

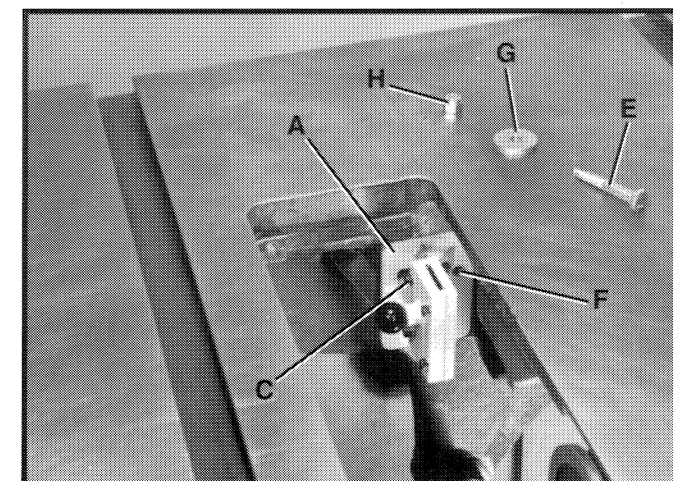


Fig. 3

5. Attach flat washer (G) Figs. 3 and 4, and 1/4-20 locknut (H) onto the 1/4-20 x 2" hex head screw (E) as shown from the rear of the saw.

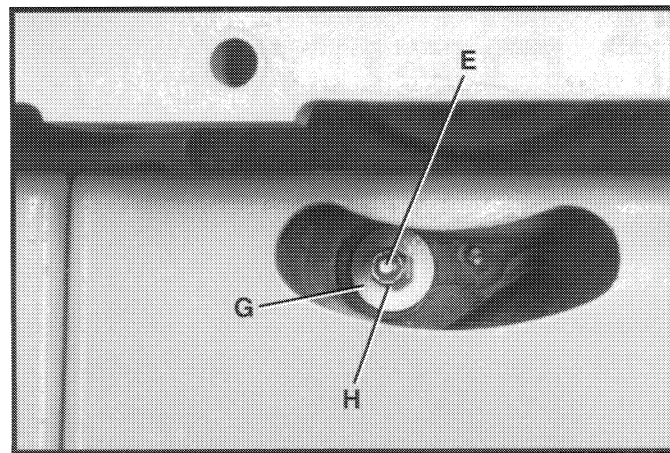


Fig. 4

6. Insert splitter (J) Fig. 5, into splitter mounting bracket (A). **IMPORTANT: Position of splitter depth holes (1, 2, 3) inside the splitter mounting bracket (A), is determined by the thickness of the stock that is being cut and the saw blade size. Always refer to table Fig. 5A when setting the depth of the splitter.** Splitter should simply snap into place. **IMPORTANT: Anti-kickback fingers (K) should be facing toward the front of the saw. Assemble the saw blade to the saw arbor and raise the saw blade to its maximum height. Make certain the saw blade is set at 90 degrees to the table.**

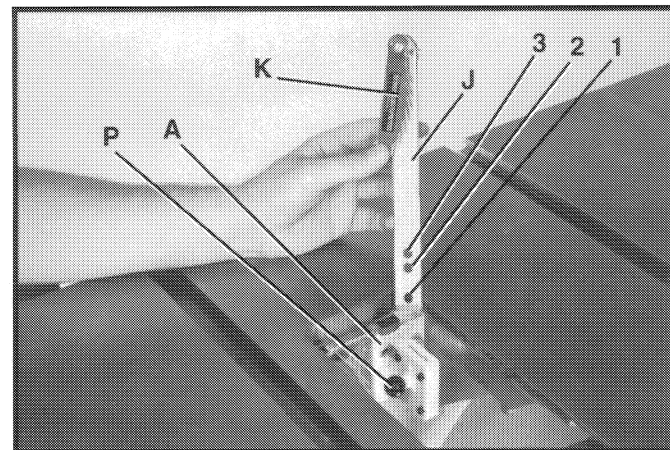


Fig. 5

7. Using a straight edge (L) Fig. 6, against the saw blade (M) and splitter (J) as shown, align splitter horizontally with the saw blade. Adjust splitter mounting bracket (A) Fig. 5, as necessary.

8. Using a square (N) Fig. 7, check to be certain the splitter (J) is 90 degrees to the saw table. Adjust splitter mounting bracket (A) Fig. 5, as necessary. Tighten screws (C) Fig. 3 (one of which is shown), when the splitter is perfectly aligned to the saw blade and table. Tighten locknut (H) Fig. 4. Repeat adjustment **STEPS 7 and 8** if necessary until the splitter is aligned to the saw blade and table.

BLADE SIZE	STOCK THICKNESS	SPLITTER POSITION	
12"	0" TO 3-1/2"	3	
	5/8" TO 4-1/8"	2	
14"	0" TO 3-1/2"	3	
	1-5/8" TO 5-1/8"	1	

Fig. 5A

9. **IMPORTANT:** When performing non thru-cutting operations, such as dadoing, the splitter (J) Fig. 7, can be removed by pulling outward on knob (P) Fig. 5, and lifting splitter (J) from the splitter mounting bracket (A). **Replace splitter and blade guard to the machine after non thru-cutting operations are completed.**

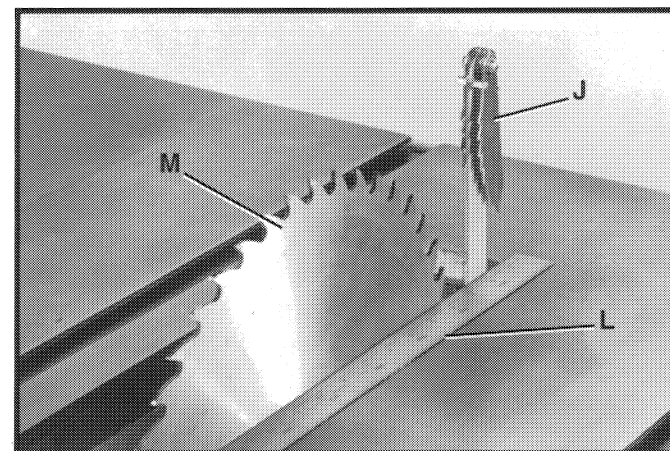


Fig. 6

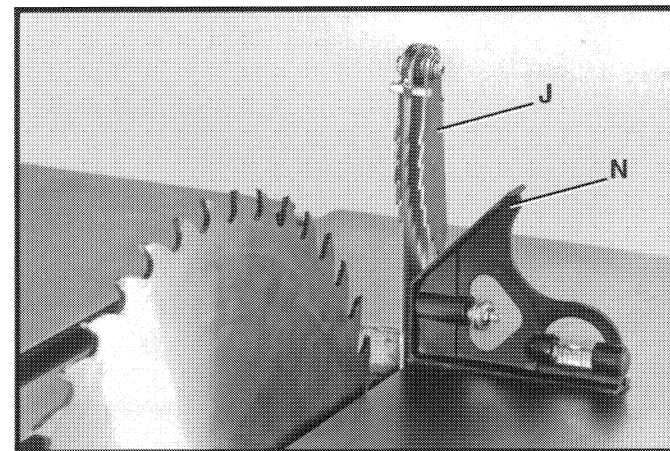
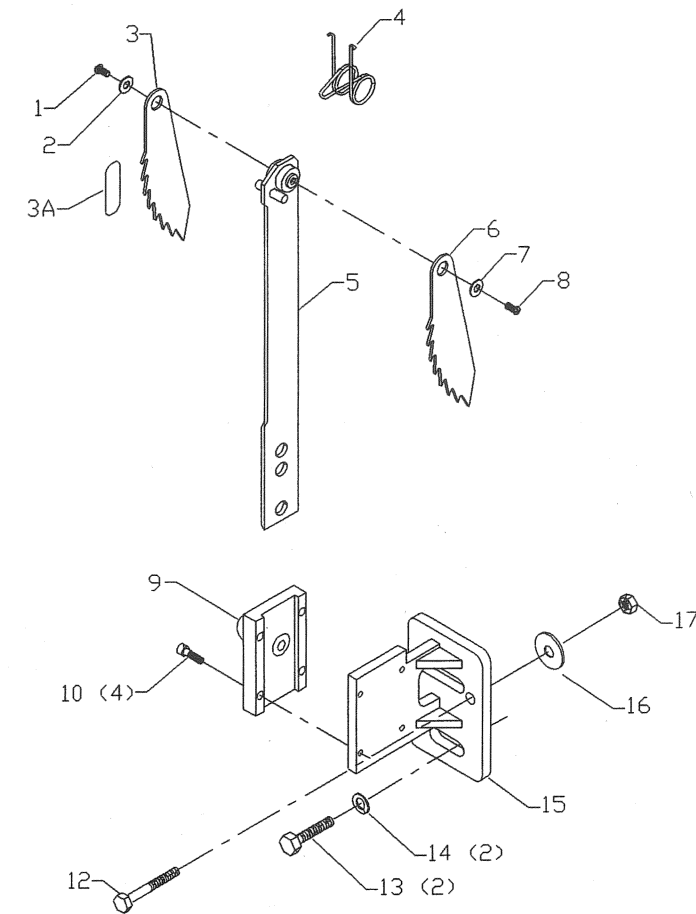


Fig. 7

REPLACEMENT PARTS



78-968 12" & 14" TILTING ARBOR SAW ANTI-KICKBACK SNAP-IN SPREADER

REF. NO.	PART NUMBER	DESCRIPTION
*	78-968	12"-14" TILTING ARBOR SAW ANTI-KICKBACK SNAP IN SPREADER, CONST OF;
1	1350304	#10-32 X 1/4" PAN HD SCR
2	1350276	FLAT WASHER
3	1350321	ANTI-KICKBACK FINGER
3A	1350997	WARNING LABEL
4	1350320	SPRING
5	1352228	SPLITTER ASSY
6	1350321	ANTI-KICKBACK FINGER
7	1350276	FLAT WASHER
8	1350304	#10-32 X 1/4" PAN HD SCR
9	1352229	COVER PLATE ASSY
10	1350311	#08-32 X 5/8" HEX SOC HD SCR
12	901-01-060-0622	1/4-20 X 2" HEX HD SCR
13	1350307	5/16-18 X 1" HEX HD SCR
14	1350308	5/16" FLAT WASHER
15	1352226	SPLITTER MOUNTING ASSY
16	1351199	FLAT WASHER
17	1350280	1/4-20 LOCK NUT

* NOT SHOWN ASSEMBLED