

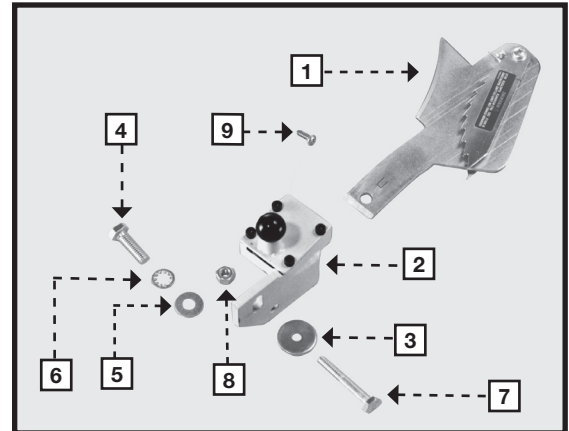
BIESEMEYER[®] MODEL 78-431 ANTI-KICKBACK SNAP-IN SPREADER

For Delta Left-Tilting Arbor Saws

COMPONENTS

1. Splitter
2. Splitter Mounting Bracket
3. Flat Washer
4. 1/4-20 x 1-3/4" Hex-head Screw
5. 5/16" Flat Washer
6. 5/16" Internal Tooth Washer
7. 5/16-18 x 1" Hex-Head Screw
8. 1/4-20 Locknut
9. 1/2" Self-tapping Mount Screw for Splitter Storage (on Biesemeyer T-Square Blade Guard Systems)

IMPORTANT: This splitter is intended for use with basket-style blade guards only.

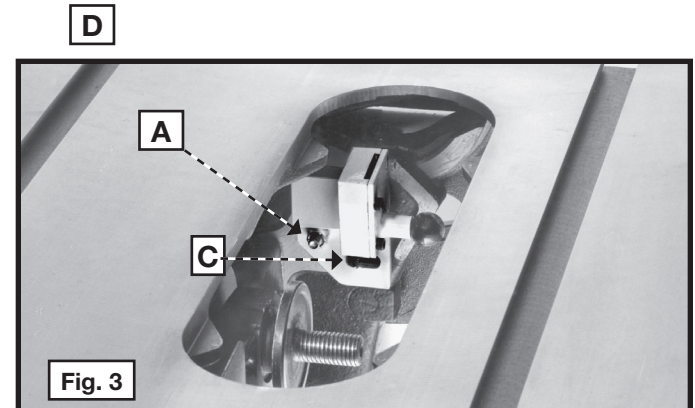
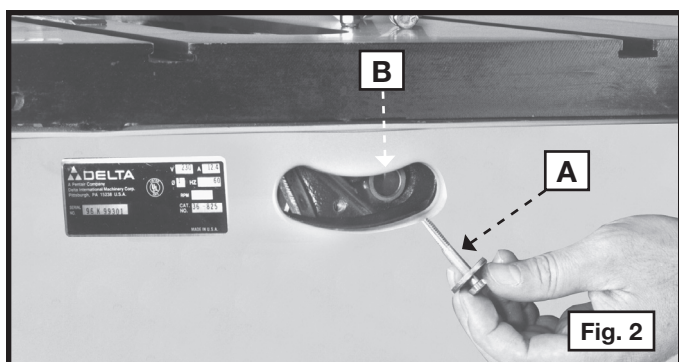
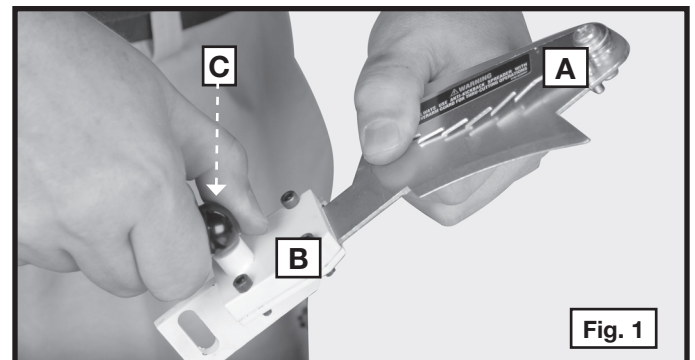


ASSEMBLY

⚠ WARNING Disconnect machine from power source!

1. Remove the saw blade, the existing blade guard, and the splitter-mounting assemblies.
2. Pull out on the black knob (C) Fig. 1 on the side of the bracket (B) and remove the splitter (A).
3. Place the flat washer on the 1-3/4" screw (A) Fig. 2. Insert the screw through the hole (B) in the trunnion.

NOTE: You might need to tilt the saw arbor slightly to gain access to the hole (B) in the rear of the saw cabinet.

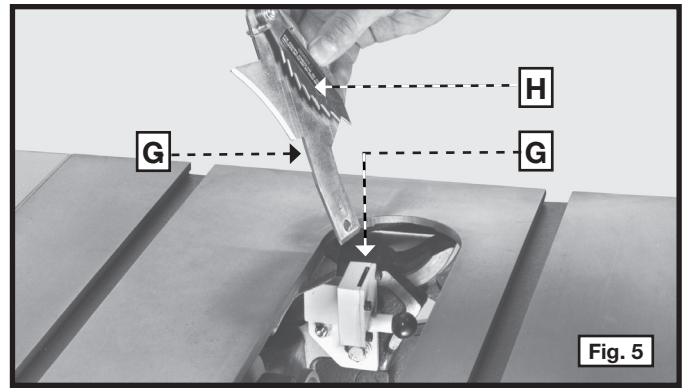
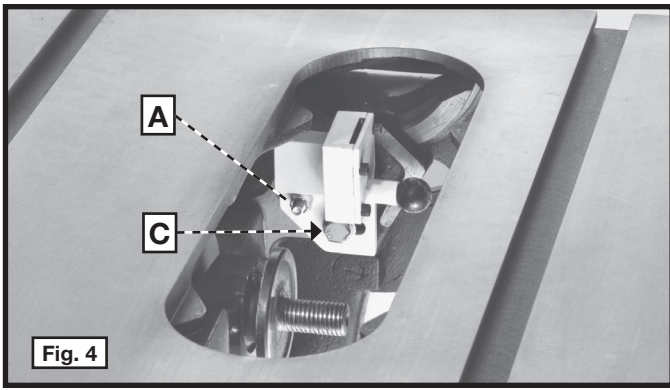


4. Position the splitter-mounting bracket (C) Fig. 3 on the screw (A). Fasten the splitter-mounting bracket (C) to the trunnion with the 1/4-20 locknut (D).

NOTE: Hand tighten the locknut for further adjustment.

5. Move the saw arbor back to its original position.
6. Place the internal tooth washer and flat washer on the Hex-Head Screw, and thread the screw through the slotted hole in the splitter-mounting bracket (C) and in the trunnion (Fig. 4).

NOTE: Hand tighten for further adjustment.



6. Insert the splitter blade (G) Fig. 5 into the slot of the mounting bracket (C) until it snaps in place.

IMPORTANT: Face the anti-kickback fingers (H) Fig. 5 toward the front of the saw.

7. Attach the saw blade to the arbor. Raise the saw blade to its maximum height.

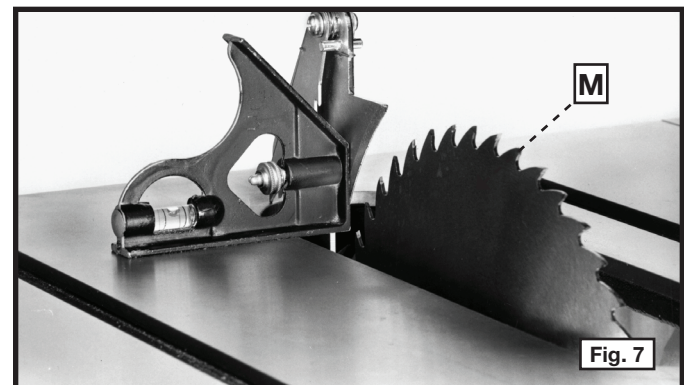
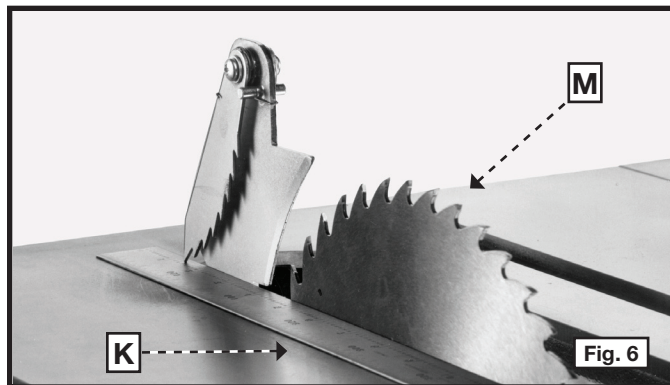
8. Use a straight-edge (K) Fig. 6 against the saw blade (L) and the splitter blade (G) to align the splitter with the blade. Adjust the bracket as necessary.

9. Use a square (M) Fig. 7 to see if the splitter is 90 degrees to the table. Adjust the splitter mounting bracket as necessary. Tighten the screw (C) and locknut (A) Fig. 4 when the splitter is aligned.

NOTE: Always use the splitter when performing through-cutting operations.

IMPORTANT: Remove the splitter (H) Fig. 5 when performing non-through-cutting operations. Pull outward on the knob (N) Fig. 6 and lift the splitter from the bracket.

IMPORTANT: Replace the splitter blade and the blade guard after you complete non-through-cutting operations.



SERVICE

REPLACEMENT PARTS

Use only identical replacement parts. For a parts list or to order parts, visit our website at biesemeyer.com. You can also order parts from our Customer Care Center at 1-800-782-1831.