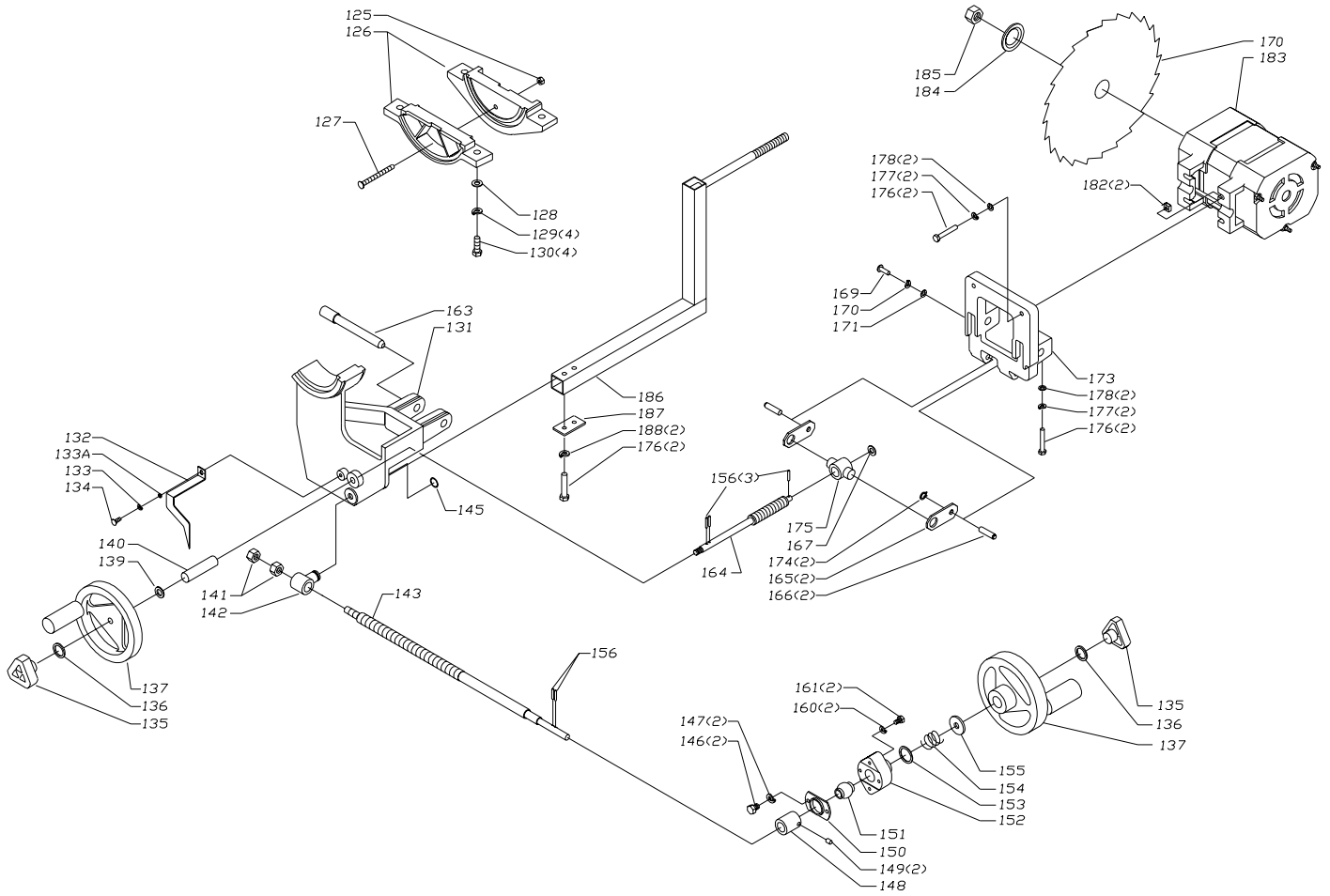


REPLACEMENT PARTS

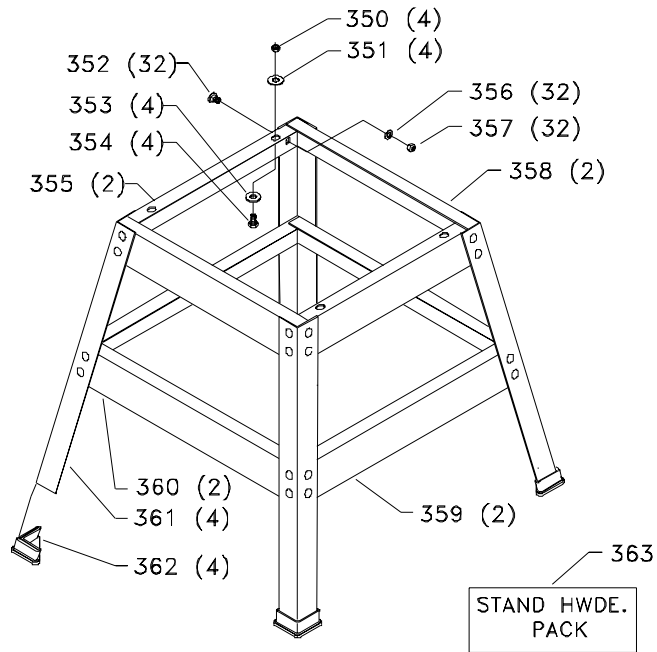
Ref.			Ref.		
<u>No.</u>	<u>Part No.</u>	<u>Description</u>	<u>No.</u>	<u>Part No.</u>	<u>Description</u>
1	34-678	TABLE INSERT, INCL.: REF 2, 3	55	1313243	POINTER
1A	1349138	WARNING & DEC LABEL	56	1310055	(DIN 913) M6 X 6MM HEX SOC SET SCREW
1B	A00985	NAME PLATE	57	1313245	STOP LINK
2	1246135	(DIN 963) M6 X 16MM FLAT HD SCREW	58	1313247	DOWEL PIN
3	1313226	WASHER	59	1345220	GUIDE BAR
4	A01002	TABLE	60	1313242	MITER GAGE
5	A00991	EXT WING	61	1310055	(DIN 913) M6 X 6MM HEX SOC SET SCREW
6	1348724	REAR RAIL	62	422-04-072-0001	PLATE
6A	1243456	HEX NUT	63	901-02-030-5750	1/4-28 X 5/16" FLAT HD SCREW
6B	1243520	(DIN 7980) M6.1 LOCK WASHER	*	1313282	GUARD ASSY., INCL.: REF 70 THRU 80
6C	1310062	(DIN 7980) M6.1 FLAT WASHER	70	1313271	PIN
7	1348722	REAR RAIL	71	1313272	GUARD
11	1348729	END PLUG	72	1313270	PUSH NUT
12	1348889	(DIN 630) M6 X 30 CARRIAGE HD SCREW	73	1313273	PIN
13	902699	SCALE	74	1313274	BRACKET
14	902897	FRONT RAIL	75	1313275	LOCK RING
15	1348726	ADAPTER	76	1313276	SPRING
16	902940	FRONT RAIL	77	1313279	ANTI-KICKBACK FINGER
17A	1310105	(DIN 933) M8 X 16MM HEX HD SCREW	78	1310311	PIN
17B	904-02-010-1703	5/16" LOCK WASHER	79	1313277	SPLITTER
17C	904-01-010-1605	3/8" FLAT WASHER	80	1313278	BUSHING
20	1345216	CABINET	81	1246015	(DIN 933) M6 X 20MM HEX HD SCREW
21	904-01-010-1605	3/8" FLAT WASHER	82	904-03-030-1757	1/4" EXT TOOTH WASHER
22	904-02-010-1703	5/16" LOCK WASHER	83	904-01-010-1603	1/4" FLAT WASHER
23	1310105	(DIN 933) M8 X 16MM HEX HD SCREW	84	1243476	(DIN 934) M12 HEX NUT
24	1313218	PIN	85	904-01-010-1607	1/2" FLAT WASHER
25	1313219	COVER	86	1313280	BRACKET
26	422-35-060-0001	WRENCH HOOK	87	1313281	(DIN 315) M6 WING NUT
27	1343538	(DIN 7980) M5.1 LOCK WASHER	*	1348731	FENCE ASSY, INCL.: REF 88 THRU 104
28	1310162	(DIN 85) M5 X 12MM PAN HD SCREW	88	1348739	END PLUG
29	1345217	BRACKET	90	1341046	M6 X 1.00 X 08 CHEESE HD SCREW
30	1313231	BUSHING	91	1246140	(DIN 125) M6.4 FLAT WASHER
31	A01003	RIVET	92	1348744	POINTER
33	A01004	SWITCH BOX	93	902899	FENCE
34	1343538	(DIN 7980) M5.1 LOCK WASHER	94	1330151	M6 X 1.00 X 35 SCREW
35	1310162	(DIN 85) M5 X 12MM PAN HD SCREW	95	1246140	(DIN 125) M6.4 FLAT WASHER
36	1243395	(DIN 934) M5 HEX NUT	96	1348746	ECCENTRIC
37	1313229	SWITCH	97	1243496	(DIN 934) M10 HEX NUT
38	1313228	1/2-20 NUT	98	1348747	HANDLE
39	1343759	SWITCH	99	1348659	(DIN 912) M10 X 80 MM SCREW
40	400-06-068-0002	KEY	100	1348743	CLAMP
41	1345225	CORD	101	1343642	M6 X 1.00 LOCK NUT
42	438-01-015-0032	START RELAY	102	1342000	M6 X 1.00 X 8 FLAT HD SCREW
43	1310547	(DIN 7981B) M4.2 X 12MM PAN HD SCREW	103	1348742	FENCE BUMPER
44	1225324	CAPACITOR	104	1341951	M6 X 1.00 X 10 SCREW
45	438-01-007-0042	WIRE NUT	105	1246047	M05 X 0.8 CHEESE HD SCREW
47	1341235	M4 X 0.7 X 12 CHESE HD SCREW	106	1348741	BUMPER
48	1310210	(DIN 6797A) M4.3 EXT TOOTH WASHER	107	1348740	REAR CLAMP
49	1243569	(DIN 934) M4 HEX NUT	108	50-471	HOOD
50	1330682	CLAMP	109	A01537	PLATE
*	1345226	MITER GAGE ASSY, INCL.: REF 51 THRU 63	110	901-05-213-1498	#10 X 1/2" HEX WASHER HD SCREW
51	1342685	HANDLE	111	A00998	FENCE/RAIL HDWE. PACK
52	1313241	WASHER	112	A00999	GUARD HDWE. PACK
53	1310161	(DIN 85) M4 X 18MM PAN HD SCREW	120	1313197	WRENCH
54	1243569	(DIN 934) M4 HEX NUT	121	1342690	OPEN END WRENCH



REPLACEMENT PARTS

Ref.

<u>No.</u>	<u>Part No.</u>	<u>Description</u>
125	A01012	M6 LOCK NUT
126	1313286	TRUNNION
127	A01013	M6 X 65MM SCREW
128	A01014	5/16" WASHER
129	A01015	5/16" WASHER
130	A01016	M8 X 25MM SCREW
131	1345235	TRUNNION
132	1313287	POINTER
133	1343504	M5 LOCK NUT
133A	1246102	FLAT WASHER
134	1310155	(DIN 84) M5 X 8MM CHEESE HD SCREW
135	902898	KNOB
136	1313239	WASHER
137	1086491	HANDWHEEL ASSY
139	A01018	3/8" WASHER
140	1313300	SPACER
141	1243496	(DIN 934) M10 HEX NUT
142	1313301	NUT-
143	1313305	SHAFT
145	1313299	O-RING
146	1342611	(DIN 571) M8 X 24MM HEX LAG HD SCREW
147	904030301757	WASHER
148	1313302	COLLAR
149	1243339	M6 X 1.00 X 8 SCREW
150	1313303	BLOCK
151	1313304	BEARING
152	1313307	BLOCK
153	1313309	WASHER
154	1313310	SPRING
155	1313311	WASHER
156	1310310	PIN
160	1310216	M8 WASHER
161	1342610	(DIN 571) M6 X 24MM HEX LAG HD SCREW
163	1342693	PIVOT PIN
164	1342694	ELEVATING SHAFT
165	1313297	LINK
166	1342707	PIN
167	904-01-010-1620	WASHER
169	1313306	(DIN 7513A) M6 X 18MM PAN HD SCREW
170	BLADE	SEE CATALOG
171	1310062	(DIN 7980) M6.1 LOCK WASHER
173	1342713	MOTOR BRACKET
174	1330258	RETAINING RING
175	1342696	ELEVATING NUT
176	1246128	(DIN 933) M6 X 40MM HEX HD SCREW
177	904-02-020-1702	1/4" LOCK WASHER
178	904-01-010-1603	1/4" FLAT WASHER
182	1342697	M6 SQUARE NUT
183	1345224	MOTOR
184	1313292	FLANGE
185	902-01-201-2567	5/8-18 HEX NUT
186	1345233	GUARD SUPPORT
187	1345234	PLATE
188	1243520	(DIN 7980) M6.1 LOCK WASHER



Ref.

<u>No.</u>	<u>Part No.</u>	<u>Description</u>
350	1243398	(DIN 934) M8 HEX NUT
351	904-01-010-1606	3/8" FLAT WASHER
352	1313325	M8 X 16MM CARRIAGE HD SCREW
353	904-01-010-1606	3/8" FLAT WASHER
354	1310105	(DIN 933) M8 X 16MM HEX HD SCREW
355	1345228	16" BRACKET
356	904-01-010-1606	3/8" FLAT WASHER
357	1243398	(DIN 934) M8 HEX NUT
358	1345229	18" BRACKET
359	1345232	19" BRACKET
360	1345230	22" BRACKET
361	1345231	LEG
362	427-99-048-0001	PLASTIC FOOT
363	A00996	STAND HARDWARE PACK

STANDARD SAFETY EQUIPMENT

In order to promote tool safety, Delta Machinery strictly enforces the policy of repairing or replacing any damaged or missing standard safety equipment on machines presented to Delta Authorized Service Centers for service/repairs. Any product that is presented to a Delta Authorized Service Centers for repairs which contains missing or damaged standard safety equipment will have that equipment repaired or replaced and the customer will be charged for any such service/repairs. Customers can avoid such charges only if the missing safety component is supplied to the service center at the time of repair.

This parts list is provided to aid in obtaining service parts. Copies of the instruction and maintenance literature can be obtained through the Delta Technical Publications Department or through your service outlet.