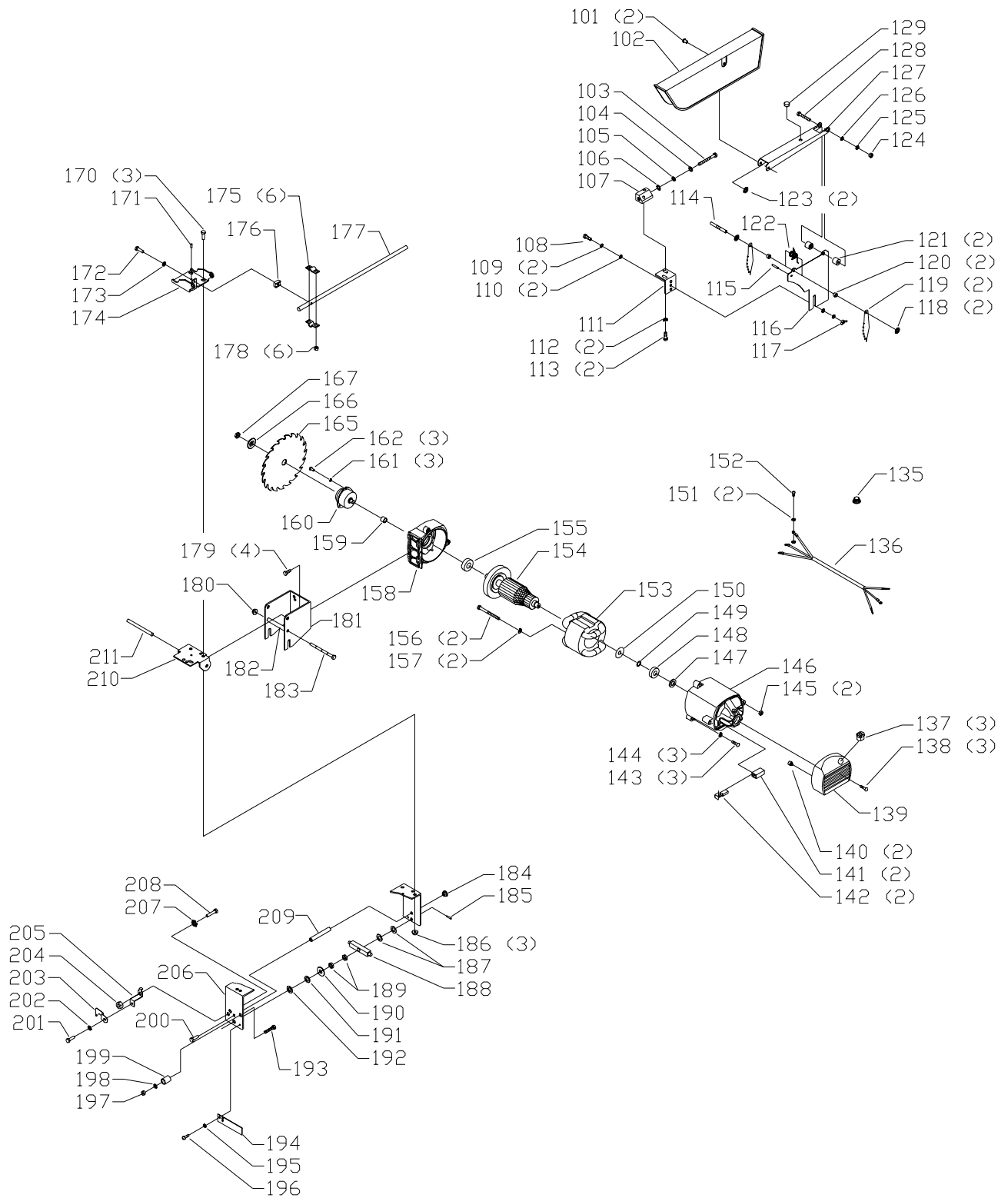


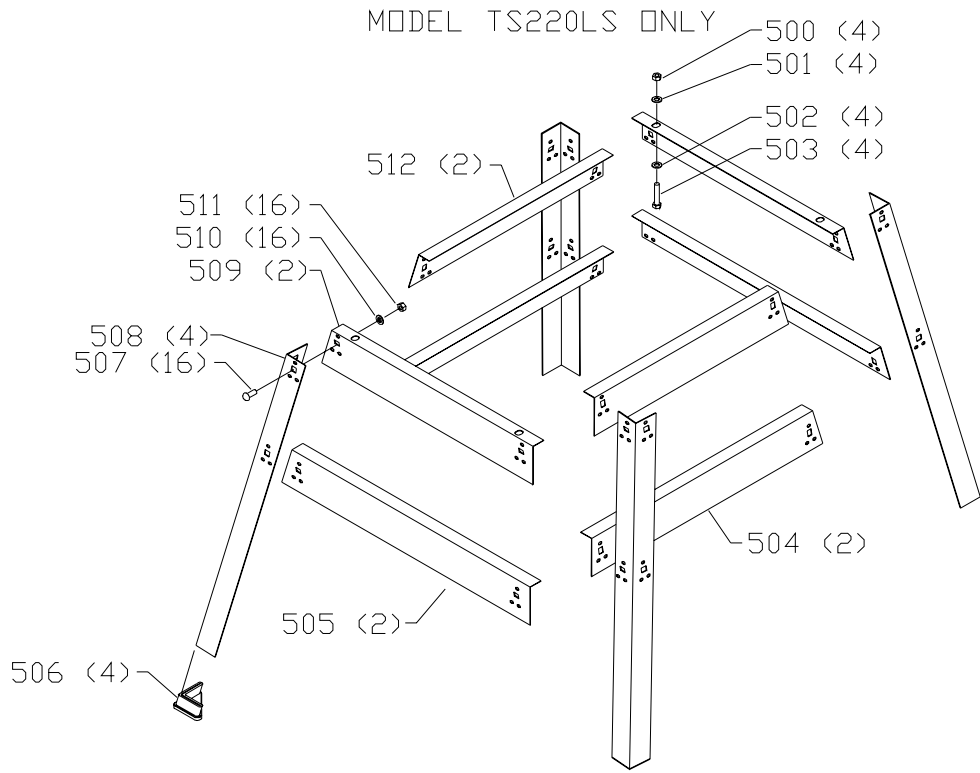
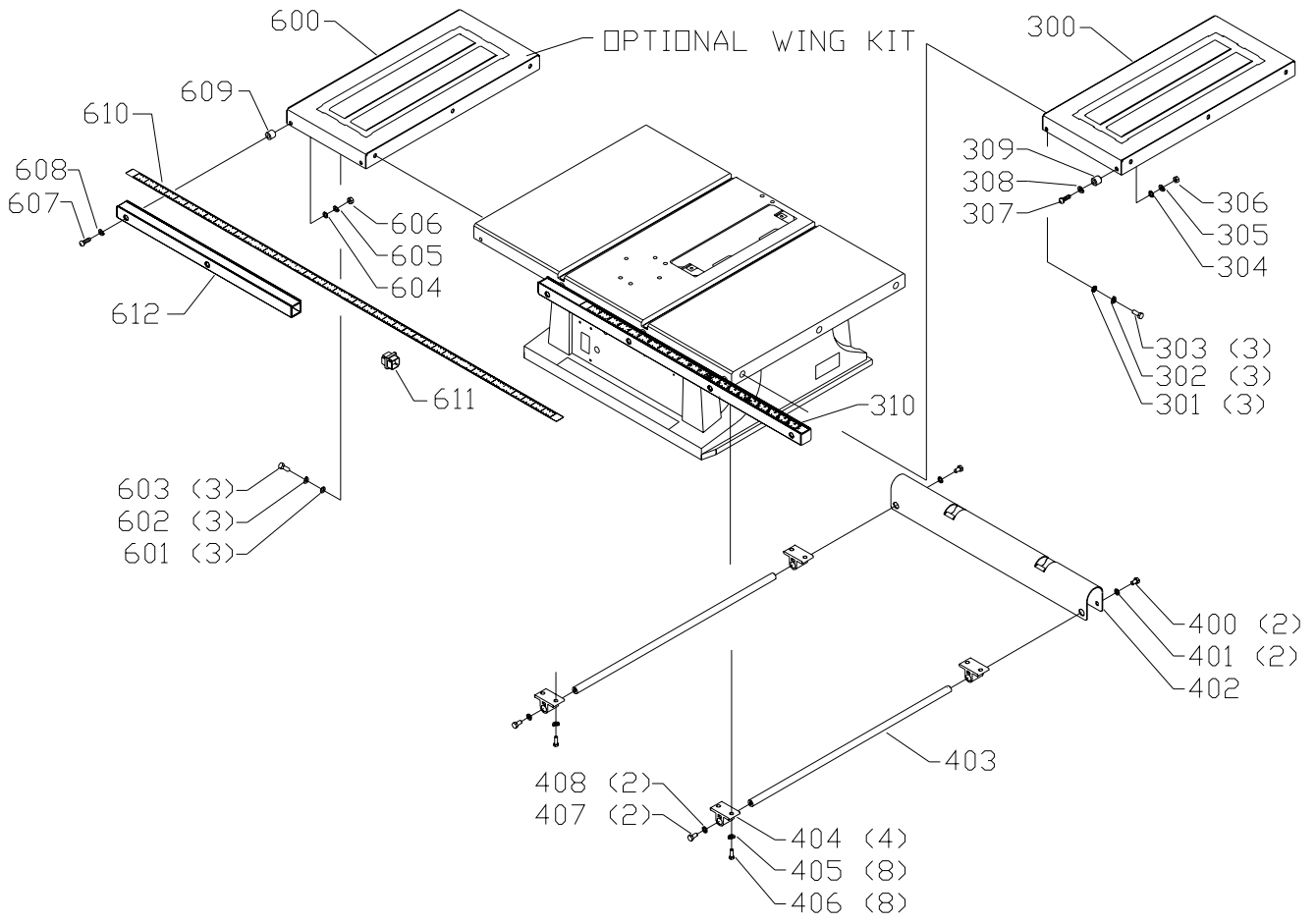
# REPLACEMENT PARTS

Ref.			Ref.		
<u>No.</u>	<u>Part No.</u>	<u>Description</u>	<u>No.</u>	<u>Part No.</u>	<u>Description</u>
*	1345096	FENCE ASSY, INCL.:	66	1313228	NUT
1	900212	FENCE	67	900829	SWITCH COVER
2	1346726	GLIDE	68	1345695	CORD CLAMP
3	1246013	M6 X 12MM HEX HD SCREW	69	1342444	M4 X 16MM CHEESE HD SCREW
4	904-03-030-1757	1/4" EXT TOOTH WASHER	70	1344600	SWITCH
5	1310159	M4 X 6MM PAN HD SCREW	71	422-39-067-0001	SWITCH ACTUATOR
6	1345098	POINTER	72	1343051	M4.2 X 20MM PAN HD SCREW
7	1345099	HANDLE	73	1345108	SWITCH BRACKET
8	1243398	M8 HEX NUT	74	1346718	SCREW ROD
9	1346703	CAM	75	1346719	HANDWHEEL
10	1346704	ADJ SCREW	76	1342035	M6 X 12MM FLAT HD SCREW
11	1346705	PIN	77	899961	HANDLE
12	1346706	PIN	78	1343361	M6 X 60MM CHEESE HD SCREW
13	900213	FENCE BODY	79	899960	LEVER ASSY
14	1346708	SPRING	80	904-01-010-1603	1/4" FLAT WASHER
15	1243501	M4 X 10MM CHEESE HD SCREW	81	904-07-010-5555	1/4" FIBER WASHER
16	1346710	SPRING PLATE	82	905657	NAMEPLATE
17	1346709	PLATE	83	1330398	M4 X 12MM FLAT HD SCREW
18	1246140	M6.4 FLAT WASHER	84	1345436	GEAR PLATE
19	1345675	SPRING	85	1345694	SLEEVE
20	1346711	REAR CLAMP	86	1343362	M4 X 8MM FLAT HD SCREW
21	1345101	LOCK ROD	87	1243569	M4 HEX NUT
24	1346721	MITER GAGE ASSY, INCL.:	88	1346725	BLOCK
40	1345104	RAIL, INCL.:	89	1346724	SPRING CLIP
41	900289	SCALE	90	1310210	M4.3 EXT TOOTH WASHER
42	901-02-010-0535	1/4-20 X 1 1/4" ROUND HD SCREW	91	1243501	M4 X 10MM CHEESE HD SCREW
43	904-02-020-2093	1/4" LOCK WASHER	92	1341104	M6 X 20MM CHEESE HD SCREW
44	1345105	END PLUG	93	1246140	M6.4 FLAT WASHER
45	1345106	SPACER	94	1343545	M4.1 FLAT WASHER
46	901-02-010-0513	1/4-20 X 1 1/2" ROUND HD SCR	95	1340406	M4.2 X 10MM PAN HD SCREW
47	901-02-010-0501	1/4-20 X 1" ROUND HD SCR	96	1345742	M6 X 20MM HEX FLANGE SCREW
48	900218	TABLE	97	1348257	WARNING LABEL
49	900060	TABLE INSERT	98	900179	HARDWARE PACK
50	1341235	M4 X 12MM CHEESE HD SCREW			
51	1349836	M3 RUBBER WASHER	*		NOT SHOWN ASSEMBLED
52	1343218	FT HD SCREW			
53	1345699	1-1/4"ARBOR WRENCH			
54	1313197	WRENCH			
55	1345794	JUMPER WIRE			
56	1345795	CORD			
57	1342438	M4 X 16MM FLAT HD SCREW			
58	1310210	M4.3 EXT TOOTH WASHER			
59	1243569	M4 HEX NUT			
60	900219	BASE, INCL.:			
61	899968	WARNING LABEL			
62	1345686	BASE PLATE			
63	1345696	RUBBER FOOT			
64	1313229	BREAKER SWITCH W/PLATE, INCL.:			
65	1343360	7/16" INT TOOTH WASHER			



# REPLACEMENT PARTS

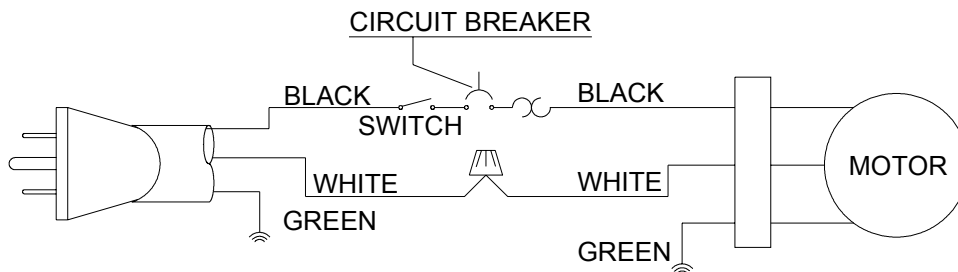
Ref.			Ref.		
<u>No.</u>	<u>Part No.</u>	<u>Description</u>	<u>No.</u>	<u>Part No.</u>	<u>Description</u>
*	1345440	GUARD ASSY, INCL.:	157	1343538	M5.1 LOCK WASHER
101	1345655	RIVET	158	1345785	GEAR HOUSING
102	1345652	GUARD	159	1345711	BEARING
103	901-01-060-5768	1/4-20 X 2 1/2" HEX HD SCREW	160	1345786	JACKSHAFT ASSY
104	904-03-020-1764	1/4" INT TOOTH WASHER	161	1243525	M4.1 LOCK WASHER
105	904-03-030-1757	1/4" EXT TOOTH WASHER	162	1341235	M4 X 12MM CHEESE HD SCREW
106	904-01-071-5744	FLAT WASHER	165	OPTIONAL	BLADE
107	1345663	BRACKET	166	422-04-103-5009	FLANGE
108	1246015	M6 X 20MM HEX HD SCREW	167	1345713	ARBOR NUT
109	904-03-030-1757	1/4" EXT TOOTH WASHER	170	1349495	1/4-20 X 3/4" HEX FLANGE SCREW
110	1310062	M6.4 FLAT WASHER	171	1342593	M4 X 10MM SPRING PIN
111	1349498	BRACKET	172	901-06-163-1484	#10-24 X 3/4" HEX HD SCREW
112	904-03-030-1757	1/4" EXT TOOTH WASHER	173	1320101	M5.3 EXT TOOTH WASHER
113	901-01-060-0611	1/4-20 X 1/2" HEX HD SCREW	174	1345717	BRACKET
114	1345662	PIN	175	1345720	STRAP
115	1310311	M4 X 22MM SPRING PIN	176	1345718	SADDLE
116	1345441	SPLITTER	177	1345719	PIVOT ROD
117	1313281	M6 WING NUT	178	1345715	1/4-20 FLANGE NUT
118	1345736	CLIP	179	1346723	M6 X 16MM HEX FLANGE SCREW
119	1345657	FINGER	180	1345715	1/4-20 FLANGE NUT
120	1345660	SPACER	181	1345787	BRACKET
121	1345658	SPACER	182	1345725	SPACER
122	1345659	SPRING	183	901-01-060-9596	1/4-20 X 3 1/4" HEX HD SCREW
123	1345656	CLIP	184	1345715	1/4-20 FLANGE NUT
124	902-01-120-1034	1/4-20 HEX NUT	185	1246119	M3 X 16MM SPRING PIN
125	904-03-030-1757	1/4" EXT TOOTH WASHER	186	1345715	1/4-20 FLANGE NUT
126	904-01-021-3590	1/4" WASHER	187	904-01-031-2934	1/4" FLAT WASHER
127	1345654	SUPPORT	188	1345724	BLOCK
128	901-01-060-3124	1/4-20 X 1 1/2" HEX HD SCREW	189	902-01-020-5433	3/8-16 JAM NUT
129	1345653	BUMPER	190	904-01-031-7706	3/8" FLAT WASHER
*	1345442	MOTOR ASSY, INCL.:	191	1343275	M10.5 WAVE WASHER
135	438-01-007-0042	WIRE NUT	192	904-01-031-2933	3/8" FIBER WASHER
136	1345443	MOTOR CORD W/TERMINALS	193	901-11-020-0826	1/4-20 X 1 1/2" CARRIAGE HD SCREW
137	1345444	STRAIN RELIEF	194	1345727	PLATE, EMO
138	1341235	M4 X 12MM CHEESE HD SCREW	195	1320101	M5.3 EXT TOOTH WASHER, EMO
139	1345445	END CAP	196	901-06-143-1757	#10-24 X 3/8" PAN HD SCREW, EMO
140	1343271	PAD	197	904-01-010-1603	1/4" FLAT WASHER
141	1343272	END CAP	198	902-01-120-1034	1/4-20 HEX NUT
142	1342955	BRUSH	199	1345716	SPACER
143	1349499	M5 X 30MM BUTTON HD SCREW	200	901-01-060-9596	1/4-20 X 3 1/4" HEX HD SCREW
144	1320101	M5.3 EXT TOOTH WASHER	201	1320187	#10-24 X 1/4" PAN HD SCREW
145	1343504	M5 LOCK NUT	202	1320101	M5.3 EXT TOOTH WASHER
146	1345446	MOTOR HOUSING	203	1345732	POINTER
147	1345707	WAVE WASHER	204	902-01-010-1300	5/16-18 HEX NUT
148	920-08-020-5352	BEARING	205	1345731	BRACKET
149	1348661	SPECIAL WASHER	206	1345723	BRACKET
150	1348660	SPECIAL WASHER	207	904-03-030-1656	5/16" EXT TOOTH WASHER
151	1310210	M4.3 EXT TOOTH WASHER	208	901-01-060-0606	5/16-18 X 5/8" HEX HD SCREW
152	1310159	M4 X 6MM PAN HD SCREW	209	1345726	SPACER
153	1345449	FIELD	210	1345722	MOUNTING PLATE
154	1345450	ARMATURE	211	1343251	ROLL PIN
155	400-08-139-0008	BEARING			
156	1345793	M5 X 80MM HEX HD SCREW			
			*	NOT SHOWN ASSEMBLED	
				EMO=EARLY MODELS ONLY	



# REPLACEMENT PARTS

Ref. No.	Part No.	Description	Ref. No.	Part No.	Description
300	1345788	EXTENSION WING	505	900365	BRACKET
301	904-01-031-5652	1/4" FLAT WASHER	506	427-99-048-0001	PLASTIC FOOT
302	904-02-010-1716	1/4" LOCK WASHER	507	1313325	M8 X 20MM CARRIAGE HD SCREW
303	901-01-060-0612	1/4-20 X 5/8" HEX HD SCREW	508	900366	LEG
304	904-01-031-5652	1/4" FLAT WASHER	509	900367	BRACKET
305	904-02-010-1716	1/4" LOCK WASHER	510	904-01-010-1605	3/8" FLAT WASHER
306	902-01-120-1034	1/4-20 HEX NUT	511	1243398	M8 HEX NUT
307	901-02-010-0535	1/4-20 X 1 1/4" ROUND HD SCREW	512	900368	BRACKET
308	904-02-010-1716	1/4" LOCK WASHER	*	34-853	OPTIONAL L. H. EXT. WING KIT, INCL.:
309	1345106	SPACER	600	1345788	EXTENSION WING
310	900289	SCALE	601	904-01-031-5652	1/4" FLAT WASHER
400	901-01-060-0611	1/4-20 X 1/2" HEX HD SCREW	602	904-02-010-1716	1/4" LOCK WASHER
401	904-01-071-5744	FLAT WASHER	603	901-01-060-0612	1/4-20 X 5/8" HEX HD SCREW
402	1345439	REAR SUPPORT	604	904-01-031-5652	1/4" FLAT WASHER
403	1345438	ROD	605	904-02-010-1716	1/4" LOCK WASHER
404	1345437	BRACKET	606	902-01-120-1034	1/4-20 HEX NUT
405	1243520	M6.1 LOCK WASHER	607	901-02-010-0535	1/4-20 X 1 1/4" ROUND HD SCREW
406	1246014	M6 X 15MM HEX HD SCREW	608	904-02-020-2093	1/4" LOCK WASHER
407	901-01-060-0611	1/4-20 X 1/2" HEX HD SCREW	609	1345106	SPACER
408	904-01-010-1603	1/4" FLAT WASHER	610	n 400-06-432-0001	SCALE
*	36-519	STAND ASSY, INCL.:	611	1345791	CONNECTOR
500	1243398	M8 HEX NUT	612	1345792	RAIL
501	904-01-010-1605	3/8" FLAT WASHER			
502	904-01-010-1605	3/8" FLAT WASHER			
503	1246079	M8 X 40MM HEX HD SCREW			
504	900364	BRACKET			

\* NOT SHOWN ASSEMBLED  
\*\* NOT SHOWN



## STANDARD SAFETY EQUIPMENT

In order to promote tool safety, Delta Machinery strictly enforces the policy of repairing or replacing any damaged or missing standard safety equipment on machines presented to Delta Authorized Service Centers for service/repairs. Any product that is presented to a Delta Authorized Service Center for repair with damaged or missing standard safety equipment will have that equipment repaired or replaced and the customer will be charged for any such service/repairs. Customers can avoid such charges only if the missing safety component is supplied to the service center at the time of repair.

This parts list is provided to aid in obtaining service parts. Copies of the instruction and maintenance literature can be obtained through the Delta Technical Publications Department, your service outlet, or by visiting the Delta Website @ [www.deltamachinery.com](http://www.deltamachinery.com).