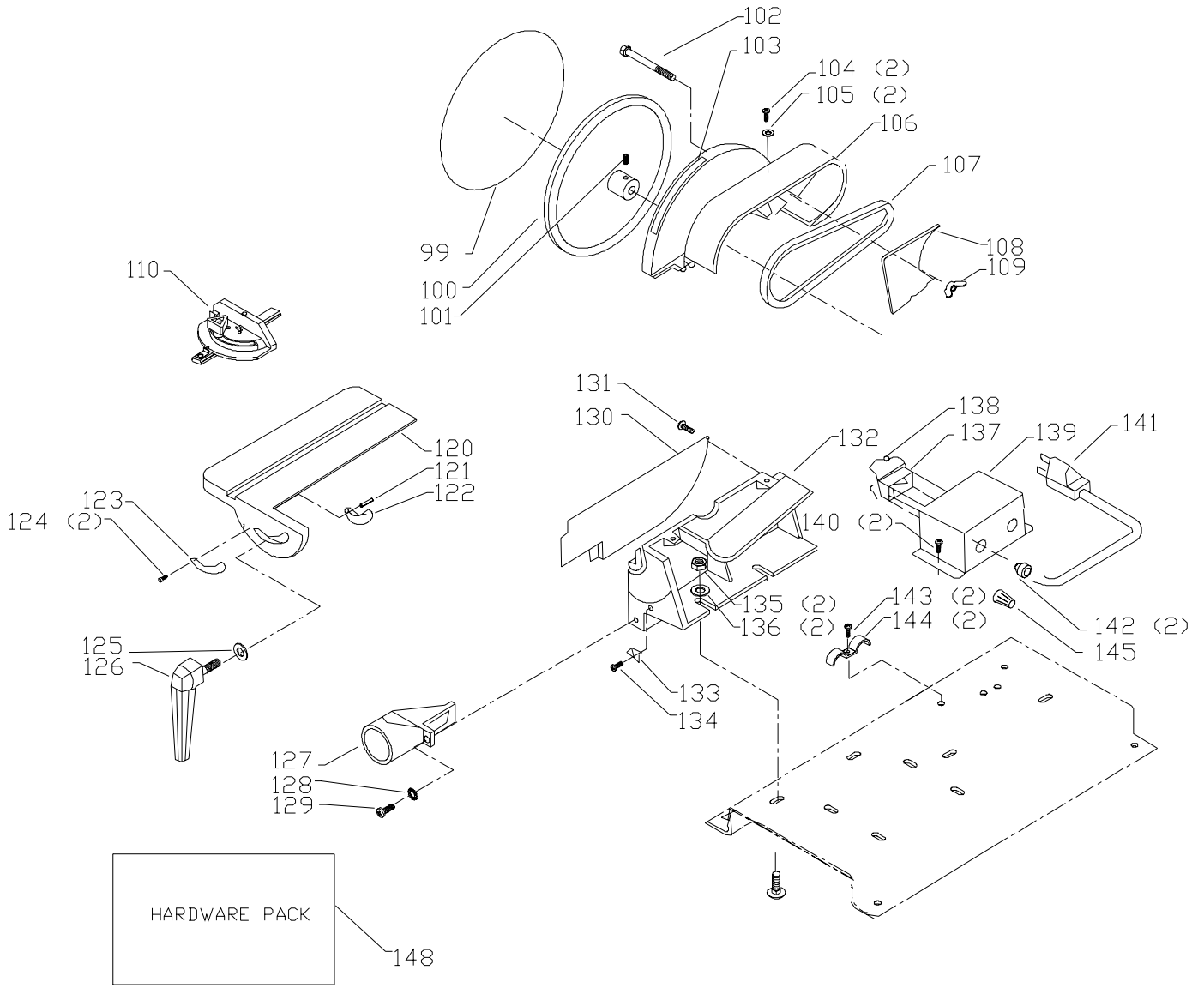


REPLACEMENT PARTS

| Ref. | | | Ref. | | |
|------------|-----------------|-----------------------------|------------|-----------------|------------------------------|
| <u>No.</u> | <u>Part No.</u> | <u>Description</u> | <u>No.</u> | <u>Part No.</u> | <u>Description</u> |
| 1 | 1246096 | M10 X 40MM HEX SOC HD SCREW | 39 | 1345979 | M6 X 45MM HEX SOC SET SCREW |
| 2 | 1341945 | 10MM FLAT WASHER | 40 | 902743 | ROTATION LABEL |
| 3 | 1342574 | SPRING | 41 | 902357 | KNOB |
| 4 | 1342575 | SPACER | 42 | 902741 | WARNING LABEL |
| 5 | 902359 | TRACKING ADJ SCREW | 43 | 902933 | COVER |
| 6 | 1342572 | SPRING | 45 | 1342564 | TABLE |
| 7 | 1342576 | SUPPORT | 46 | 1344042 | M5 X 20MM HEX SOC SET SCREW |
| 8 | 1246184 | M3 X 20MM SPRING PIN | 47 | 902852 | CLAMP ASSY |
| 9 | 1342571 | IDLER SHAFT | 48 | 1342612 | SPECIAL WASHER |
| 10 | 1342577 | IDLER SHAFT | 49 | 1342562 | BRACKET |
| 11 | 1246159 | M5 X 5MM HEX SOC SET SCREW | 50 | 1243526 | 8.4MM FLAT WASHER |
| 12 | 1246008 | M5 X 12MM HEX SOC SET SCREW | 51 | 1246157 | 8.1MM LOCK WASHER |
| 13 | 1342581 | DRIVE PULLEY | 52 | 1310105 | M8 X 15MM HEX HD SCREW |
| 14 | 1342580 | RETAINING PLATE | 53 | 1246008 | M5 X 12MM HEX SOC SET SCREW |
| 15 | 1341235 | M4 X 12MM CHEESE HD SCREW | 54 | 1342589 | DRIVE PULLEY |
| 16 | 1243525 | 4.1MM LOCK WASHER | 55 | 1342588 | KEY |
| 17 | 920-04-010-7272 | BALL BEARING | 56 | 1342608 | MOTOR |
| 18 | 1342579 | KEY | 57 | 1243496 | M10 HEX NUT |
| 19 | 1342578 | MAIN DRIVE SHAFT | 58 | 1243360 | 10MM LOCK WASHER |
| 20 | 422-31-139-0002 | BALL BEARING | 59 | 1243502 | 10MM FLAT WASHER |
| 21 | 1342614 | FRAME | 60 | 1342603 | M10 X 20MM CARRIAGE HD SCREW |
| 22 | 920-04-010-7272 | BALL BEARING | 61 | 904494 | BASE |
| 23 | 1342570 | IDLER | 62 | 1313227 | M4 X 12MM PAN HD SCREW |
| 24 | 1246140 | 6.4MM FLAT WASHER | 63 | 1310210 | 4MM LOCK WASHER |
| 25 | 1243520 | 6MM LOCK WASHER | 64 | 1246034 | M8 X 20MM HEX HD SCREW |
| 26 | 1243379 | M6 X 10MM HEX SOC HD SCREW | 65 | 1246157 | 8.1MM LOCK WASHER |
| 27 | 1246100 | M10 X 20MM HEX SOC HD SCREW | 66 | 1243526 | 8.4MM FLAT WASHER |
| 28 | 1243360 | 10MM LOCK WASHER | 67 | 1342605 | RUBBER FOOT |
| 29 | 1243502 | 10MM FLAT WASHER | 68 | 1243526 | 8.4MM FLAT WASHER |
| 30 | 1342568 | PLATEN | 69 | 1243398 | M8 HEX NUT |
| 31 | 1342567 | SPECIAL NUT | 70 | 1243502 | 10MM FLAT WASHER |
| 32 | 920-04-010-7272 | BALL BEARING | 71 | 1243360 | 10MM LOCK WASHER |
| 33 | 1342570 | IDLER | 72 | 1246100 | M10 X 20MM HEX SOC HD SCREW |
| 34 | 1342566 | RETAINING RING | 80 | n 891903 | 2.5MM ALLEN WRENCH |
| 35 | 1246158 | M5 X 16MM HEX SOC SET SCREW | 81 | 422-30-101-0002 | 8MM ALLEN WRENCH |
| 36 | 1342609 | DRIVE WHEEL | 99 | OPTIONAL | SANDING DISK |
| 37 | OPTIONAL | SANDING BELT | | | |
| 38 | 1243456 | M6 HEX NUT | | | |



REPLACEMENT PARTS

| Ref. | <u>No.</u> | <u>Part No.</u> | <u>Description</u> |
|------|------------|-----------------|----------------------------|
| | 100 | 1342583 | DISK PLATE |
| | 101 | 1246159 | M5 X 5MM HEX SOC SET SCREW |
| | 102 | 1342582 | M4 X 45MM CHEESE HD SCREW |
| | 103 | 902743 | ROTATION LABEL |
| | 104 | 1243501 | M4 X 10MM CHEESE HD SCREW |
| | 105 | 904-01-010-1602 | 3/16" FLAT WASHER |
| | 106 | 1342584 | PULLEY COVER |
| | 107 | 1342585 | V BELT |
| | 108 | 1342586 | COVER |
| | 109 | 1342587 | M4 WING NUT |
| | 110 | 1342598 | MITER GAGE ASSEMBLY |
| | 120 | 1342592 | TABLE |
| | 121 | 1342593 | M4 X 10MM SPRING PIN |
| | 122 | 1342594 | GUIDE |
| | 123 | 1342595 | SCALE |
| | 124 | 1087794 | RIVIT |
| | 125 | 1243502 | 10MM FLAT WASHER |
| | 126 | 902852 | CLAMP ASSY |
| | 127 | 1342597 | DUST CHUTE |
| | 128 | 1246067 | M6 X 15MM CHEESE HD SCREW |
| | 129 | 1313361 | 6.4MM EXT TOOTH WASHER |
| | 130 | 902851 | SIDE GUARD |
| | 131 | 1310159 | M4 X 6MM PAN HD SCREW |
| | 132 | n 904495 | SUPPORT |
| | 133 | 1342596 | POINTER |
| | 134 | 1243501 | M4 X 10MM CHEESE HD SCREW |
| | 135 | 1243496 | M10 HEX NUT |
| | 136 | 1243502 | 10MM FLAT WASHER |
| | 137 | 1343759 | SWITCH, INCL: |
| | 138 | 400-06-068-0002 | SWITCH KEY |
| | 139 | 1342606 | SWITCH COVER |
| | 140 | 1313227 | M4 X 12MM PAN HD SCREW |
| | 141 | 1345225 | POWER CORD |
| | 142 | 438-01-004-0062 | HEYCO BUSHING 5/8" |
| | 143 | 1313227 | M4 X 12MM PAN HD SCREW |
| | 144 | 1340719 | CLAMP |
| | 145 | 1320175 | CONNECTOR |
| | 148 | 902354 | HARDWARE PACK |

STANDARD SAFETY EQUIPMENT

In order to promote tool safety, Delta Machinery strictly enforces the policy of repairing or replacing any damaged or missing standard safety equipment on machines presented to Delta Authorized Service Centers for service/repairs. Any product that is presented to a Delta Authorized Service Centers for repairs which contains missing or damaged standard safety equipment will have that equipment repaired or replaced and the customer will be charged for any such service/repairs. Customers can avoid such charges only if the missing safety component is supplied to the service center at the time of repair.

This parts list is provided to aid in obtaining service parts. Copies of the instruction and maintenance literature can be obtained through the Delta Technical Publications Department or through your service outlet.