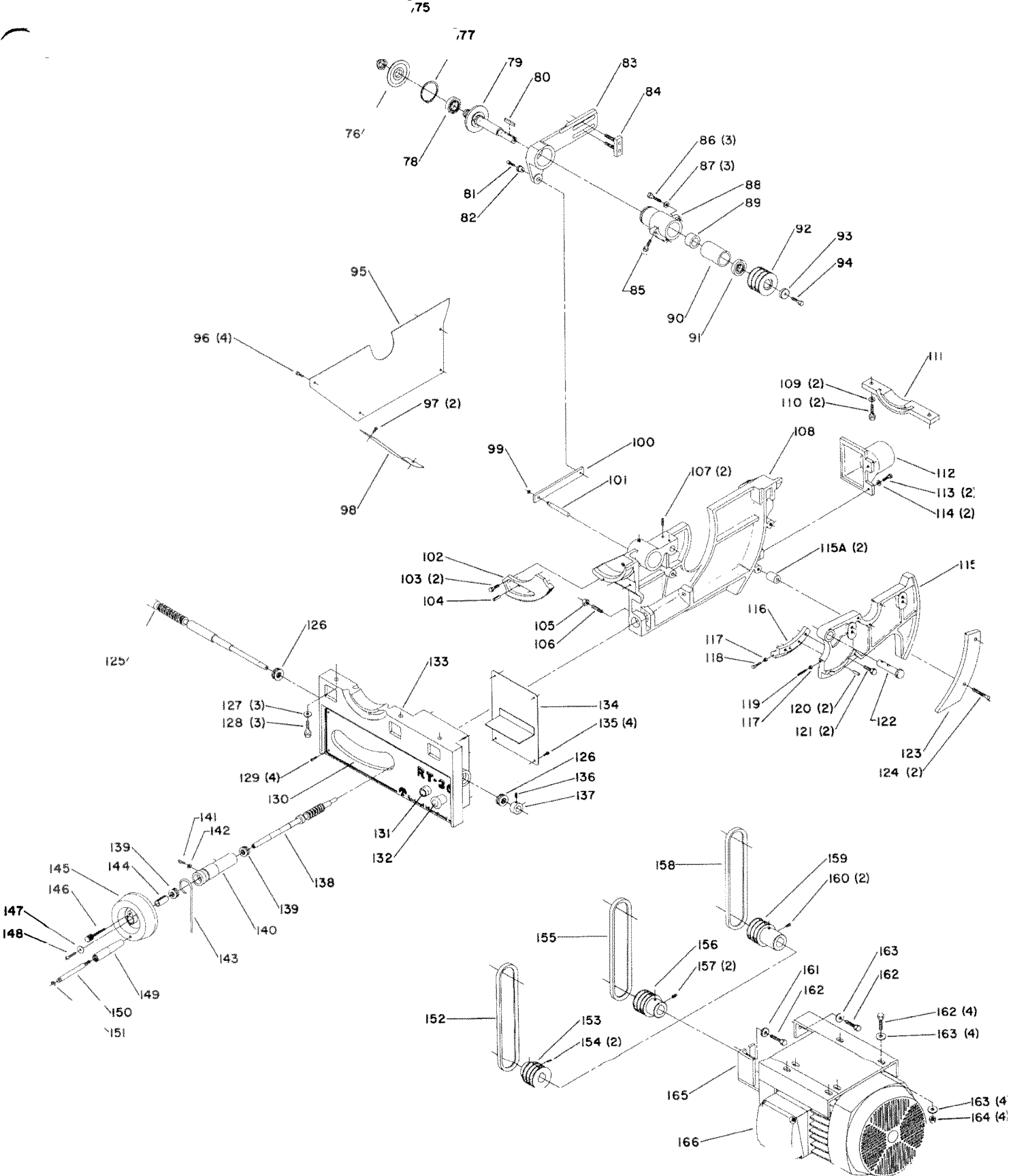


REPLACEMENT PARTS

Ref. No.	Part No.	Description
*	422-29-354-0001	Blade Guard, Const. of:
1	422-29-054-0002	Blade Guard - Left
2	1246030	(DIN 84) M6 X 16mm Slot. Cheese Hd. Mach. Scr.
3	422-29-104-0001	Spacer
4	422-29-138-0001	Knob
5	904-01-010-1605	5/16" Flat Washer
6	1246131	(DIN 933) M8 X 60mm Hex Hd. Hd. Cap Scr.
	422-29-054-0001	Blade Guard - Right
	422-29-014-0001	Bracket
9	422-29-079-0001	Washer
10	422-29-047-0001	Anti-Kick Back Finger
11	422-29-047-0002	Anti-Kick Back Finger
12	422-29-017-0001	Bushing
13	422-29-086-0001	Splitter
14	1243496	(DIN 934) M10 Hex Nut
15	1243360	(DIN 7980) ϕ 10mm Lockwasher
16	422-29-104-0002	Blade Spacer
17	422-29-104-0004	Blade Spacer
*	422-29-350-0001	Miter Gage, Const. of:
18	1243321	(DIN 916) M6 X 10mm Hex Soc. Set Scr.
	422-29-089-0001	Stop Support
20	422-29-108-0002	Rod
21	422-29-138-0004	Knob
22	422-29-108-0001	Stop Rod
23	422-29-138-0002	Knob
24	1243502	(DIN 125) ϕ 10mm Flat Washer
25	422-29-138-0003	Knob
26	422-29-132-0001	Scale
27	422-29-012-0001	Miter Gage Body
28	1243501	(DIN 84) M4 X 10mm Slot. Cheese Hd. Mach. Scr.
29	422-29-075-0001	Pointer
30	422-29-004-0001	Bar, Incl.:
31	422-29-071-0003	Pin
32	422-29-083-0001	Shim
33	1246021	(DIN 963) M5 X 10mm Slot Flat Hd. Scr.
34	422-29-363-0001	Table Insert, Incl.:
35	1246137	(DIN 916) M5 X 8mm Hex Soc. Set Scr.
36	1246109	(DIN 1481) ϕ 5 X 16mm Roll Pin
37	422-29-091-0001	Table
38	1243360	(DIN 7980) ϕ 10mm Lockwasher
39	1246052	(DIN 912) M10 X 35mm Soc. Hd. Cap Scr.
40	422-29-043-0001	Fence Support
41	422-29-109-0001	Extension Wing - Right
42	1246133	(DIN 916) M8 X 8mm Hex Soc. Set Scr.
43	1246044	(DIN 916) M8 X 30mm Hex Soc. Set Scr.
44	422-29-109-0002	Extension Wing - Left
45	1243476	(DIN 934) M12 Hex Nut
46	422-29-111-0001	Stud
47	422-29-079-0008	Retainer
48	1246007	(DIN 916) M4 X 8mm Hex Soc. Set Scr.
49	422-29-355-0001	Guide Rail, Incl.:
50	422-29-132-0002	Rip Scale
51	1243501	(DIN 84) M4 X 10mm Slot. Cheese Hd. Mach. Scr.
52	422-29-075-0003	Pointer
53	422-29-108-0003	Pointer Stem
54	1246038	(DIN 916) M6 X 16mm Hex Soc. Set Scr.
55	1246118	(DIN 1481) ϕ 3 X 24mm Roll Pin
56	422-29-138-0006	Knob
57	1246058	(DIN 6799) RS9 Retaining Ring
58	422-29-027-0001	Clamp Shoe
59	422-29-067-0001	Lock Lever
60	422-29-027-0002	Guide Block w/Bushing
61	422-29-055-0002	Guide
62	422-29-051-0005	Guide Rail Gear
63	1246074	(DIN 912) M10 X 30mm Soc. Hd. Cap Scr.
64	1246056	(DIN 912) M6 X 12mm Soc. Hd. Cap Scr.
65	422-29-043-0002	Rip Fence

NOT SHOWN ASSEMBLED



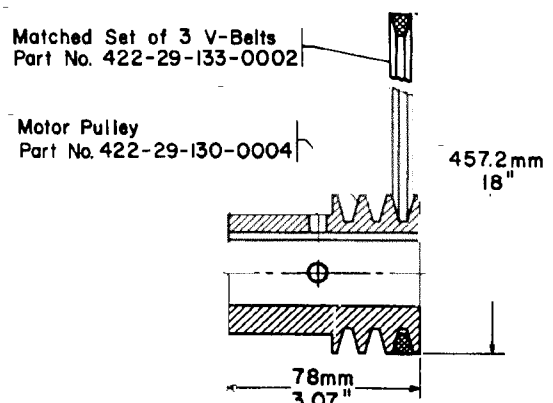
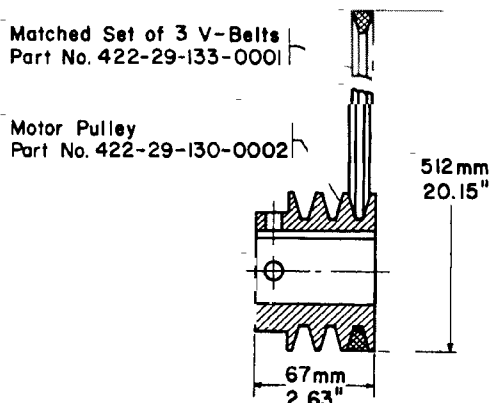
REPLACEMENT PARTS

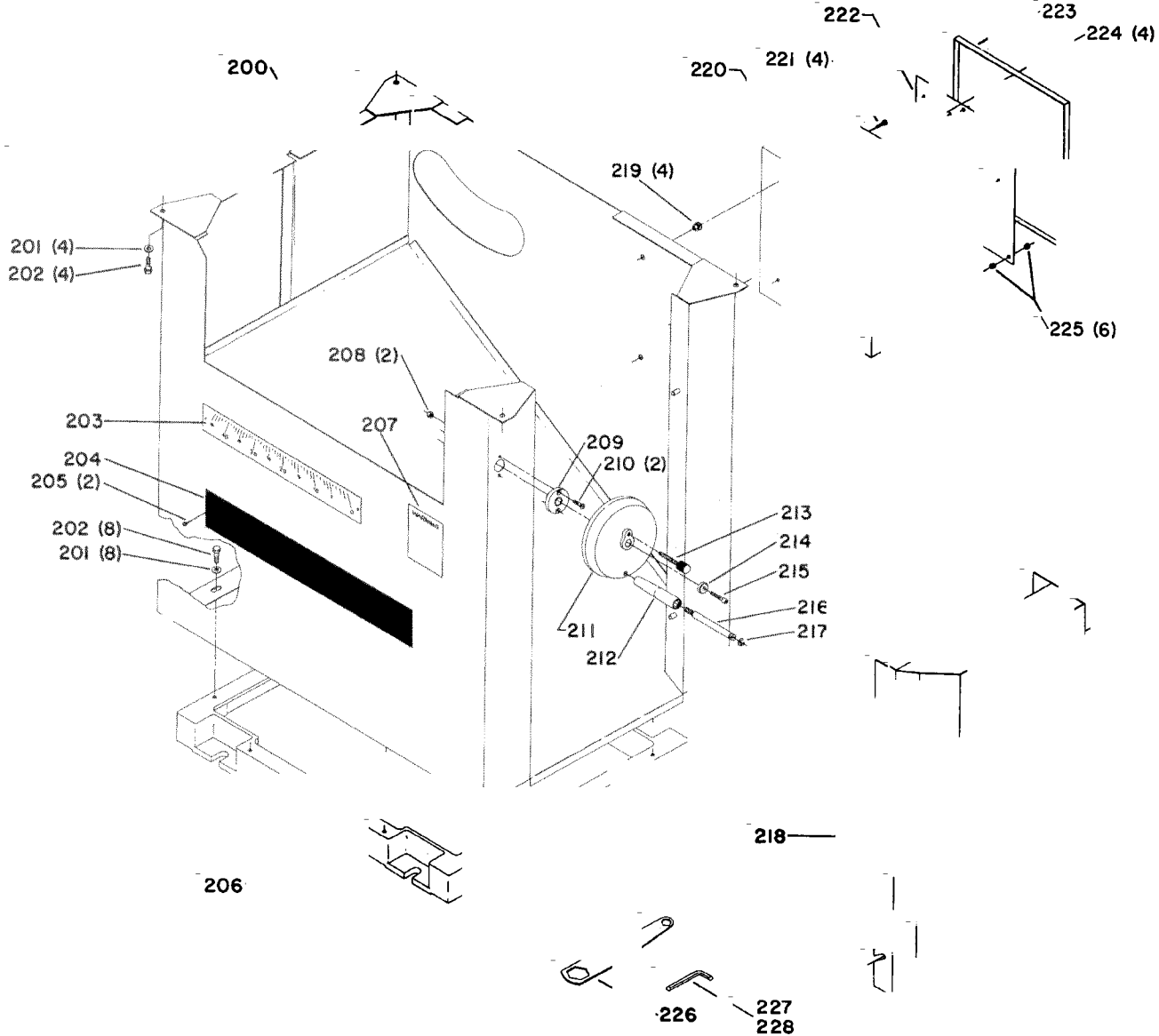
Ref. No.	Part No.	Description	Ref. No.	Part No.	Description	
75	422-29-079-0007	Arbor Nut			Bearing	
76	422-29-103-0001	Outside Flange			(DIN 125) #10mm Flat Washer	
77	1246142	(DIN 472) 58i Internal Retaining Ring			(DIN 933) M10 X 30mm Hex Hd. Cap Scr.	
78	422-29-017-0005	Bearing			(DIN 84) M5 X 12mm Slot. Cheese Hd. Mach. Scr.	
79	422-29-003-0001	Arbor w/Flange			Panel	
80	422-29-079-0005	Key			On Button	
81	1246056	(DIN 912) M6 X 12mm Soc. Hd. Cap Scr.			Off Button	
82	422-29-017-0002	Bushing			Front Bracket	
83	422-29-089-0002	Splitter Support			Guard	
84	422-29-014-0005	Splitter Mounting Bracket			(DIN 84) M5 X 12mm Slot. Cheese Hd. Mach. Scr.	
85	1246078	(DIN 933) M8 X 15mm Hex Hd. Cap Scr.			(DIN 916) M6 X 10mm Hex Soc. Set Scr.	
86	1246017	(DIN 933) M8 X 30mm Hex Hd. Cap Scr.			Collar	
87	1243526	(DIN 125) #8mm Flat Washer			Worm Gear - Elevating	
88	422-29-014-0004	Arbor Bracket			Bearing	
89	422-29-104-0006	Collar			Wheel Hub	
90	422-29-017-0003	Bushing			(DIN 84) M6 X 12mm Slot. Cheese Hd. Mach. Scr.	
91	920-04-020-5348	Bearing			(DIN 125) #6mm Flat Washer	
92	422-29-130-0001	Arbor Pulley			Pointer	
93	422-29-079-0003	Washer			Bushing	
94	1246016	(DIN 933) M8 X 25mm Hex Hd. Cap Scr.			Handwheel - Elevating	
95	422-29-031-0001	Cover			Wheel Locking Knob	
96	1246067	(DIN 84) M6 X 15mm Slot. Cheese Hd. Mach. Scr.			Washer	
97	1246001	(DIN 84) M5 X 12mm Slot. Cheese Hd. Mach. Scr.			(DIN 912) M6 X 25mm Hex Soc. Hd. Cap Scr.	
98	422-29-031-0003	Dust Cover			Handle	
99	1243903	(DIN 471) 10e Ext. Retaining Ring			Stud	
100	422-29-004-0002	Guard Support Bar			(DIN 6799) R5-8 Ext. Retaining Ring	
101	422-29-071-0001	Pin			Matched Set of Three (3) V-Belts - 512mm (20.15") O.C., for use with Ref. No. 153	
102	422-29-051-0002	Rack - Tilt			Motor Pulley. (See Service Note B)	
103	1246034	(DIN 933) M8 X 20mm Hex Hd. Cap Scr.			Motor Pulley - 28mm (1.10") Bore for use with Ref. No. 152 V-Belt. (See Service Note B)	
104	1243550	(DIN 1481) #8 X 20mm Roll Pin	153	422-29-130-0002	Motor Pulley - 28mm (1.10") Bore for use with Ref. No. 152 V-Belt. (See Service Note B)	
105	1243496	(DIN 934) M10 Hex Nut			(DIN 916) M8 X 10mm Hex Soc. Set Scr.	
106	1246134	(DIN 915) M10 X 30mm Hex Soc. Set Scr.		154	1246009	Matched Set of Three (3) V-Belts - 457.2mm (18") O.C., for use with Ref. No. 156 Motor Pulley. (See Service Note B)
107	1246041	(DIN 914) M8 X 15mm Hex Soc. Set Scr.		155	422-29-133-0002	Motor Pulley - 28mm (1.10") Bore, for use with Ref. No. 155 V-Belt. (See Service Note B)
108	422-29-102-0001	Yoke			(DIN 916) M8 X 10mm Hex Soc. Set Scr.	
109	1243502	(DIN 125) #10mm Flat Washer			Matched Set of Three (3) V-Belts - 457.2mm (18") O.C., for use with Single Phase Motors	
110	1246035	(DIN 933) M10 X 30mm Hex Hd. Cap Scr.			Motor Pulley 28.57mm (1-1/8") Bore, for use with Single Phase Motors Only.	
111	422-29-014-0003	Rear Trunnion Bracket			(DIN 916) M8 X 10mm Hex Soc. Set Scr.	
112	422-29-026-0001	Dust Chute	157	1246009	Matched Set of Three (3) V-Belts - 457.2mm (18") O.C., for use with Single Phase Motors	
113	1246113	(DIN 84) M8 X 20mm Slot. Cheese Hd. Mach. Scr.		158	422-29-133-0002	Motor Pulley 28.57mm (1-1/8") Bore, for use with Single Phase Motors Only.
114	1243526	(DIN 125) #8mm Flat Washer			(DIN 916) M8 X 10mm Hex Soc. Set Scr.	
115	422-29-314-0001	Elevating Bracket, Incl.: (See Service Note A)		159	422-29-130-0003	Washer
115A	Two (2) Spacers	Not Available as Individual Replacement Part (See Service Note A)			Motor - 230/460 V., 3 Phase, 60 Hz.	
116	422-29-051-0001	Rack - Elevating		160	1246009	Motor - 230V., Single Phase
117	1243456	(DIN 934) M6 Hex Nut		161	422-29-079-0015	
118	1246015	(DIN 933) M6 X 20mm Hex Hd. Cap Scr.		162	1246019	
119	1246124	(DIN 916) M6 X 25mm Hex Soc. Set Scr.		163	1243502	
120	1243550	(DIN 1481) #8 X 20mm Roll Pin		164	1243496	
121	1246018	(DIN 933) M10 X 25mm Hex Hd. Cap Scr.		165	422-29-072-0002	
122	422-29-071-0002	Pin		166	438-02-314-0965	
123	422-29-079-0002	Retainer		166	83-069	
124	1246099	(DIN 933) M10 X 50mm Hex Hd. Cap Scr.				
125	422-29-051-0003	Worm Gear - Tilt				

SERVICE NOTES:

A - When replacing Elevating Bracket Ref. No. 115, Part No. 422-29-314-0001, Old Spacer Ref. No. 115A must be discarded. Elevating Bracket comes cast with two (2) Spacers attached, which must be broken off and used with new part.

B - Two sizes of V-Belts and Pulleys are used with 3 Phase Motors. When replacing Belt or Pulley the existing part must be measured to determine correct size. See details below for correct usage as these parts are not interchangeable.

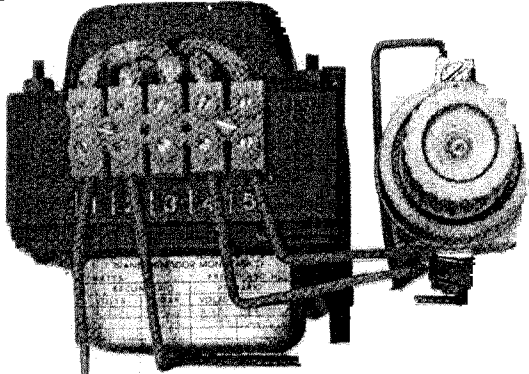




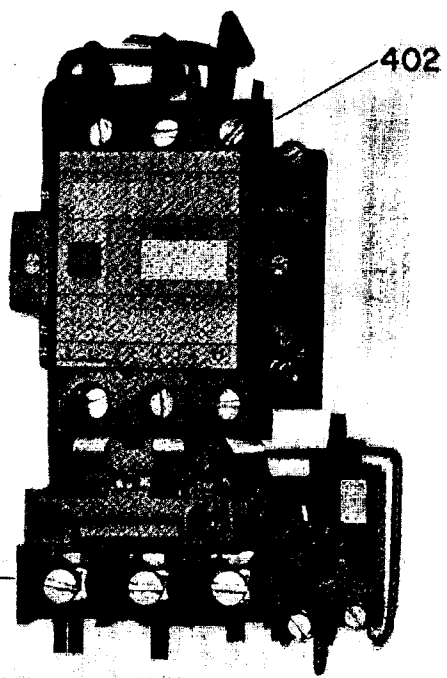
REPLACEMENT PARTS

Ref. No.	Part No.	Description	Ref. No.	Part No.	Description
200	422-29-005-0002	Base	215	1243402	(DIN 912) M6 X 25mm Hex Soc, Set Scr,
201	1243526	(DIN 125) ϕ 8mm Flat Washer	216	428-06-111-0001	Stud
202	1246139	(DIN 933) M8 X 18mm Hex Hd, Cap Scr.	217	1246026	(DIN 6799) RS-8 Ext. Retaining Ring
203	422-29-132-0003	Tilt Scale	218	422-29-031-0002	Cover - For use with 3 Phase Motors Only
204	428-07-137-0001	Nameplate	219	418-10-079-0003	Rivet w/Internal - For use with 3 Phase Motors Only
205	901-06-133-1263	#10-24 X 3/8" Type "F" Self. Tap. Pan Hd. Scr.	220	438-01-001-0042	Electrical Box - For use with 3 Phase Motors Only
206	422-29-005-0001	Pedestal	221	1246047	(DIN 84) M5 X 15mm Slot Cheese Hd, Mach. Scr.
207	422-16-754-0003	Warning Label	222	418-10-072-0003	Plate - For use with 3 Phase Motors Only
208	1243526	(DIN 934) M6 Hex Nut	223	418-10-031-0004	Cover - For use with 3 Phase Motors Only
209	422-29-103-0002	Flange	224	901-06-133-1263	#10-24 X 3/8" Type "F" Self Tap. Pan Hd. Scr.
210	1246135	(DIN 963) M6 X 15mm Slot. Flat Hd. Scr.	225	1243395	(DIN 934) M5 Hex Nut
211	422-29-100-0003	Handwheel	226	422-29-101-0001	Wrench
212	428-06-067-0001	Handle	227	955-03-020-2200	5/16" Allen Wrench
213	422-29-138-0005	Wheel Locking Knob	228	422-29-101-0002	4mm Allen Wrench
214	422-29-079-0004	Washer			

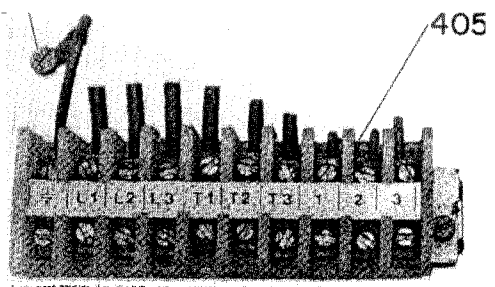
400



401



404



403

THREE PHASE ONLY

SINGLE PHASE ONLY

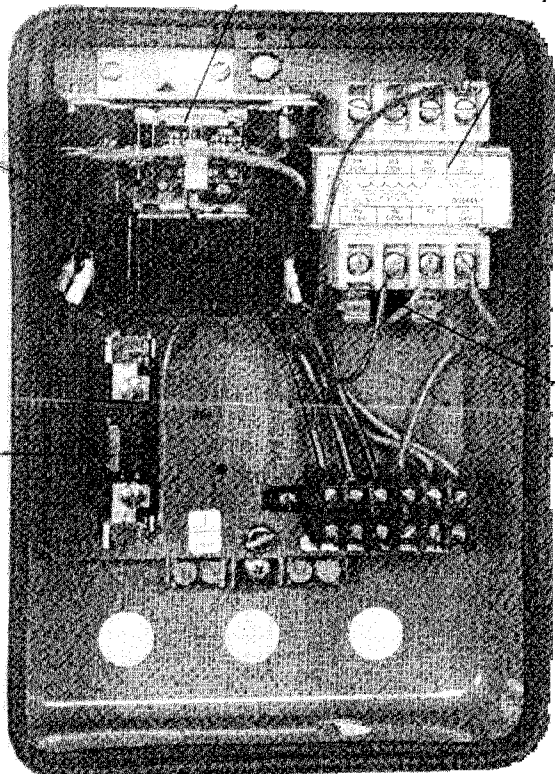
408

409

406

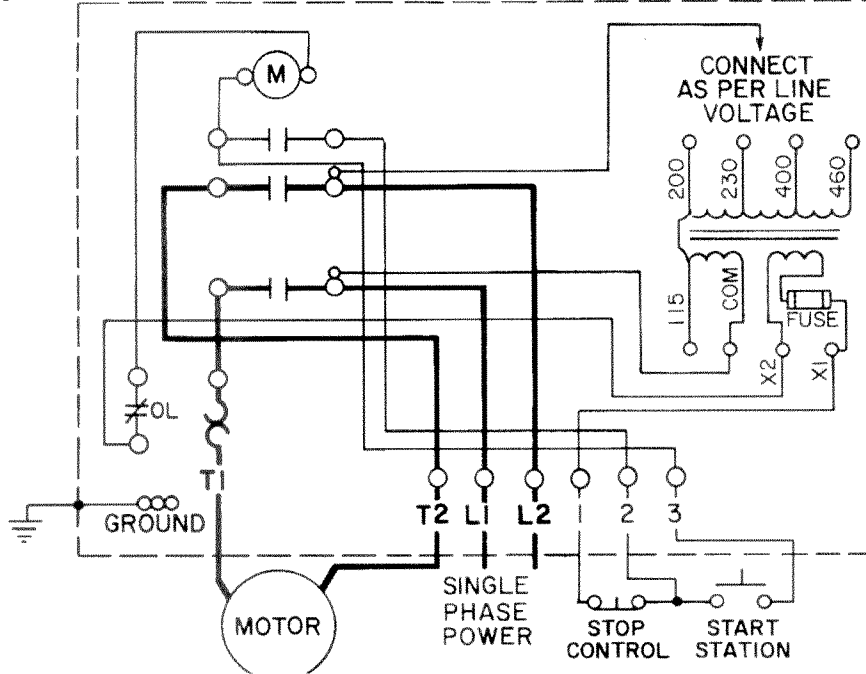
410

407

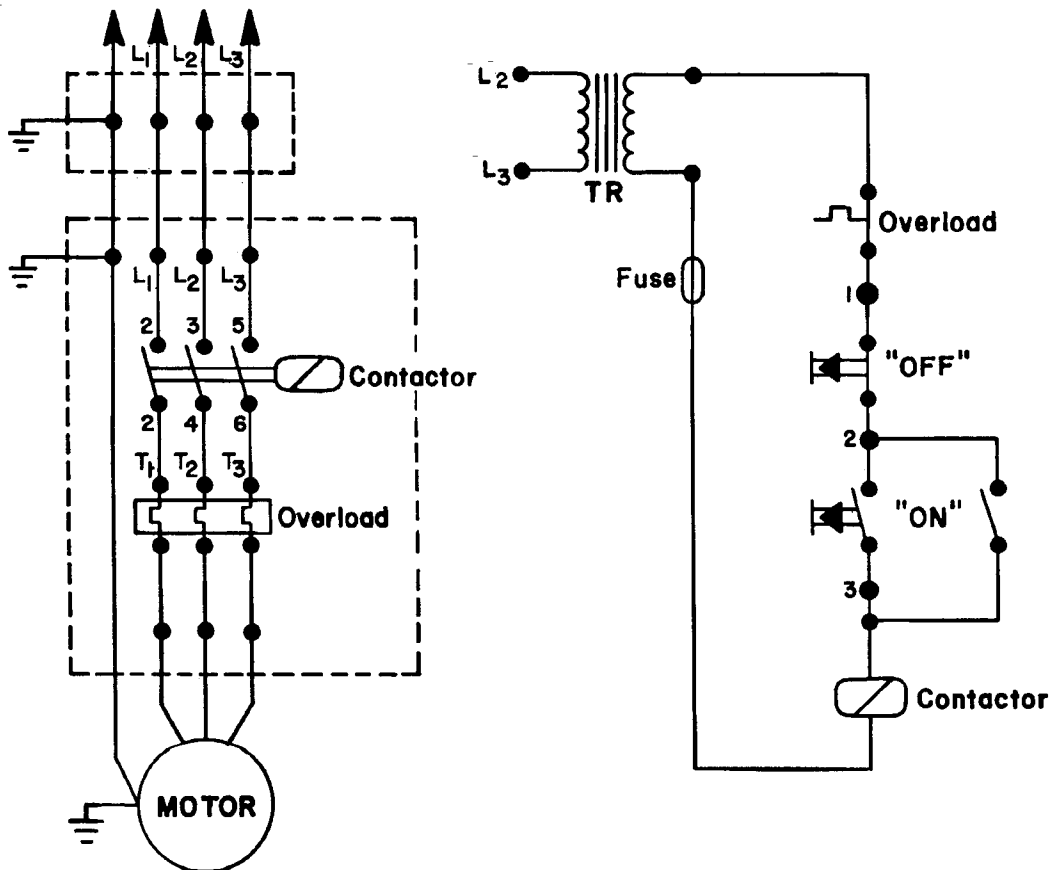


REPLACEMENT PARTS

Ref. No.	Part No.	Description
400	438-01-019-0009	Transformer - For 3 Phase Only
401	438-01-027-0012	Fuse - For 3 Phase Only
402	438-01-016-0169	Contactore - For 3 Phase Only
403	438-01-017-0171	Overload - For 3 Phase Only
404	1246088	(DIN 84) M5 X 6mm Slot, Cheese Hd, Mach For 3 Phase Only
405	438-01-018-0057	Terminal Strip Complete - For 3 Phase Only
406	438-01-016-0170	Magnetic Contactore - For Single Phase Only
407	1225250	Thermal Overload - For Single Phase Only
408	1225236	Interlock Switch - For Single Phase Only
409	438-01-019-0012	Transformer - For Single Phase Only
410	438-01-027-0008	Fuse - For Single Phase Only



SINGLE PHASE WIRING DIAGRAM



THREE PHASE WIRING DIAGRAM