

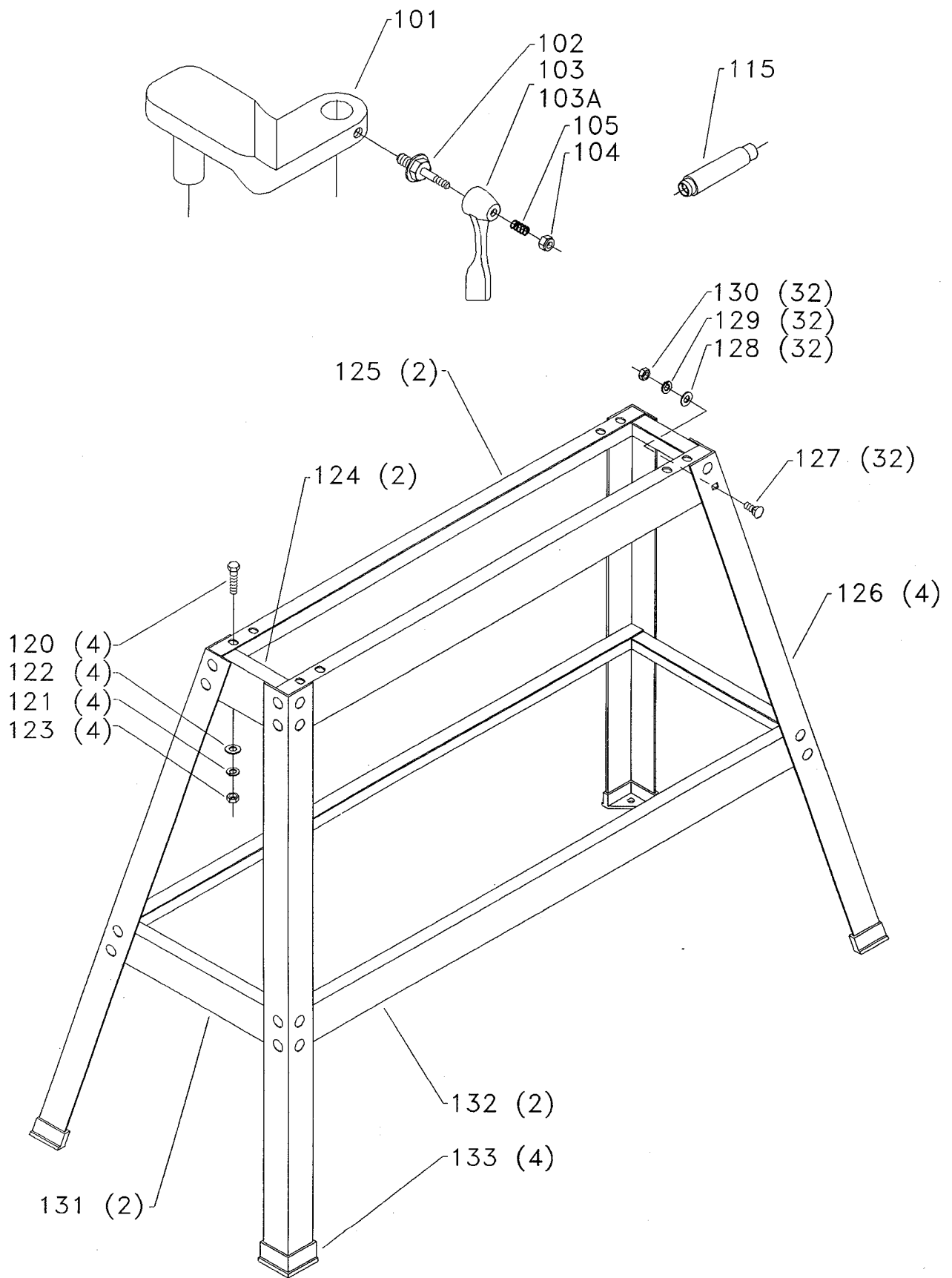
# REPLACEMENT PARTS

REF NO	PART NUMBER	DESCRIPTION	REF NO	PART NUMBER	DESCRIPTION
*	434-08-430-0004	MOTOR PULLEY ASSY, CONST OF:	53	46-936	3" FACE PLATE
1	434-08-020-0001	BEARING CAP	54	901-06-121-7381	#10-24 X 1/2" PAN HD SCREW
2	920-04-020-5360	BALL BEARING	60	46-712	LIVE CENTER ( <i>Current Models Only</i> )
3	434-08-430-0003	SMALL PULLEY W/SLEEVE BEARING	60A	46-710	DEAD CENTER, INCL: ( <i>Early Models Only</i> )
4	901-04-150-0232	1/4-20 X 3/8" HEX SOC SET SCREW	60B	434-08-022-0004	CENTER POINT - TAPERED
5	434-08-130-0006	SMALL PULLEY - FIXED	*	434-08-392-0001	TAILSTOCK ASSY, CONST OF:
6	901-01-060-0648	3/8-16 X 1 1/4" HEX HD SCREW	61	434-08-106-0001	QUILL
7	904-02-020-1704	3/8" LOCK WASHER	62	434-08-132-0001	SCALE
8	901-01-060-0640	3/8-16 X 3/4" HEX HD SCREW	63	434-08-112-0001	SCREW
9	62-231	MOTOR - 3/4 HP, INCL:	64	904-07-010-5562	3/4" FIBER WASHER
10	438-01-017-0200	SWITCH	65	902-01-212-2409	1/4-20 LOCK NUT
11	434-08-054-0001	SWITCH GUARD	66	406-03-122-0002	SPRING ( <i>Current Models Only, See A</i> )
**	904-15-010-7013	EXT RET RING ( <i>Current Models Only</i> )	67	434-08-067-0003	LEVER ( <i>Current Models Only, See A</i> )
12	434-08-331-0001	COVER ASSY, INCL:	67A	406-03-033-0002	RATCHET HANDLE ( <i>Early Models Only, See A</i> )
13	901-05-163-1229	#10-16 X 1/2" PAN HD SCREW	68	422-34-111-0002	STUD
14	434-08-754-0002	NAMEPLATE/WARNING LABEL	69	434-08-400-0001	HANDWHEEL ASSY
15	434-08-132-0002	HEADSTOCK SCALE	70	902-01-021-7801	9/16-12 JAM NUT
*	434-08-358-0001	HEADSTOCK ASSY, CONST OF:	71	902-01-213-1635	3/8-16 LOCK NUT
16	434-08-014-0002	MOTOR BRACKET	72	928-01-023-1644	SPRING
17	434-08-067-0001	LEVER	73	434-08-067-0002	LEVER
18	434-08-079-0001	PIVOT NUT	74	902-01-043-1646	3/8-16 HEX NUT
19	901-06-121-7381	#10-24 X 1/2" PAN HD SCREW	75	904-01-010-1615	FLAT WASHER
20	903-01-033-1639	RIVIT	76	434-08-092-0001	TAILSTOCK
21	434-08-014-0001	CLEVIS BRACKET	77	434-08-072-0001	CLAMP PLATE
22	904-15-243-1638	E-RING	78	901-01-063-1637	SCREW
23	904-15-100-7021	INT RET RING	79	434-08-306-0001	BED
24	920-04-020-5360	BALL BEARING	80	434-08-027-0001	KEY
25	904-15-013-1047	EXT RET RING	81	904-01-010-1636	FLAT WASHER
26	434-08-385-0001	SPINDLE SHAFT	82	901-03-010-3308	1/2-13 X 1 3/4" HEX SOC HD SCREW
27	927-03-023-1641	KEY	83	46-711	12" TOOL REST
28	901-04-150-1128	1/2-13 X 1 1/4" HEX SOC SET SCREW	*	46-707	TOOL REST BASE, CONST OF:
29	902-01-020-1266	1/2-13 JAM NUT	84	434-08-108-0001	CAM ROD
30	904-02-020-1704	3/8" LOCK WASHER	85	905-01-010-2706	3/16" X 1" SPRING PIN
31	901-01-060-0648	3/8-16 X 1 1/4" HEX HD SCREW	86	434-08-005-0001	TOOL REST BASE, INCL:
32	434-08-058-0001	HEADSTOCK	87	434-02-327-5004	CLAMP ASSY
33	904-07-133-1645	NYLON WASHER			( <i>Current Models Only, See Service Note B</i> )
34	904-01-031-2923	FLAT WASHER	87A	406-03-033-0002	RATCHET HANDLE
35	434-08-075-0002	POINTER			( <i>Early Models Only, See Service Note B</i> )
36	901-04-153-1643	#8-32 X 1/4" HEX SOC SET SCREW	87B	434-08-067-0003	LEVER
37	434-08-106-0003	SPEED CHANGER SHAFT			( <i>Intermediate Models Only, See Service Note B</i> )
38	928-06-013-1535	LOAD SPRING	88	422-34-111-0002	STUD ( <i>Early &amp; Intermediate Models Only, See Service Note B</i> )
39	902-01-030-9358	1-8 HEX NUT	89	902-01-212-2409	1/4-20 LOCK NUT
40	434-08-075-0002	POINTER	90	406-03-122-0002	SPRING
41	901-04-153-1643	#8-32 X 1/4" HEX SOC SET SCREW			( <i>Intermediate Models Only, See Service Note B</i> )
42	406-03-033-0002	RATCHET HANDLE	91	434-03-112-0002	EYE BOLT
43	406-03-122-0002	SPRING	92	434-08-072-0001	CLAMP PLATE
44	406-03-112-0006	SPECIAL SCREW	93	904-01-010-1615	FLAT WASHER
45	434-08-020-0002	SPRING CAP	94	902-01-213-1635	3/8-16 LOCK NUT
46	928-01-203-1626	SPRING	95	46-905	KNOCKOUT BAR ( <i>Current Models Only</i> ), INCL:
47	434-08-430-0001	LARGE PULLEY W/SLEEVE BEARING	96	931-01-021-4099	KNOB-SCREW ON
48	49-139	DRIVE BELT	97	955-03-013-1628	3/8" HEX WRENCH
49	434-08-130-0007	LARGE PULLEY - FIXED			( <i>For Use With 46-700 Bench Models Only</i> )
50	901-04-150-0232	1/4-20 X 3/8" HEX SOC SET SCREW	98	422-25-101-0001	WRENCH
51	46-709	DRIVE CENTER, INCL:	99	434-08-101-0001	3/8" T HANDLE WRENCH
52	434-08-022-0004	CENTER POINT - TAPERED			( <i>For Use With 46-701 Stand Models Only</i> )
			*	NOT SHOWN ASSEMBLED	
			**	NOT SHOWN	

**SERVICE NOTES:**

A - Early model lever (Ref No 67A) was nonindexable and did not have a spring. Current models lever (Ref No 67) is indexable and incorporates a spring (Ref No 66).

B - Early model lever (Ref No 89A) was nonindexable and did not have a spring. Intermediate model lever (Ref No 89B) was indexable and incorporates a spring (Ref No 88). Current models utilize "T" handle style tool rest clamp assembly (Ref No 89).



# REPLACEMENT PARTS

REF NO	PART NUMBER	DESCRIPTION
*	46-706	TOOL REST ASSY, CONST OF:
101	434-08-089-0001	TOOL REST
102	422-34-111-0002	STUD
103	434-08-067-0003	LEVER ( <i>Current Models Only, See Service Note D</i> )
103A	406-03-033-0002	RATCHET HANDLE ( <i>Early Models Only, See Service Note D</i> )
104	902-01-212-2409	1/4-20 LOCK NUT
105	406-03-122-0002	SPRING ( <i>Current Models Only</i> )
115	46-708	HOLLOW CUP CENTER

## ITEMS LISTED BELOW FURNISHED AS STANDARD EQUIPMENT WITH 46-701 STAND MODELS ONLY

*	46-705	HOME SHOP LATHE STAND, CONST OF:
120	901-01-060-0617	3/8-16 X 1 1/2" HEX HD SCREW
121	904-02-020-1704	3/8" LOCK WASHER
122	904-01-010-1615	FLAT WASHER
123	902-01-040-1026	3/8-16 HEX NUT
124	427-99-014-0076	BRACKET - 5.75"
125	427-99-014-0073	BRACKET - 31.75"
126	427-99-066-0034	LEG
127	901-11-023-1476	5/16-18 X 5/8" CARRIAGE HD SCREW
128	904-01-010-1620	FLAT WASHER
129	904-02-010-1703	5/16" LOCK WASHER
130	902-01-010-1300	5/16-18 HEX NUT
131	427-99-014-0075	BRACKET - 11.75"
132	427-99-014-0074	BRACKET - 38.13"
133	427-99-048-0001	FOOT

\* NOT SHOWN ASSEMBLED

## SERVICE NOTE:

*D - Early model lever (Ref No 103A) was nonindexable and did not have a spring.  
Current model lever (Ref NO 103) is indexable and incorporates a spring (Ref No 103).*

---

## STANDARD SAFETY EQUIPMENT

In order to promote tool safety, Delta International Machinery Corp. strictly enforces the policy of repairing or replacing any damaged or missing standard safety equipment on machines presented to Delta Authorized Service Center for service/repairs. Any product which is presented to a Delta Authorized Service Center for repairs which contains missing or damaged standard safety equipment will have that equipment repaired or replaced and the customer will be charged for any such service/repairs. Customers can avoid such charges only if the missing safety component is supplied to the service center at the time of repair.

*This parts list is provided to aid in obtaining service parts. Copies of the instruction and maintenance literature can be obtained through the Delta Technical Publications Department or through your local service outlet.*