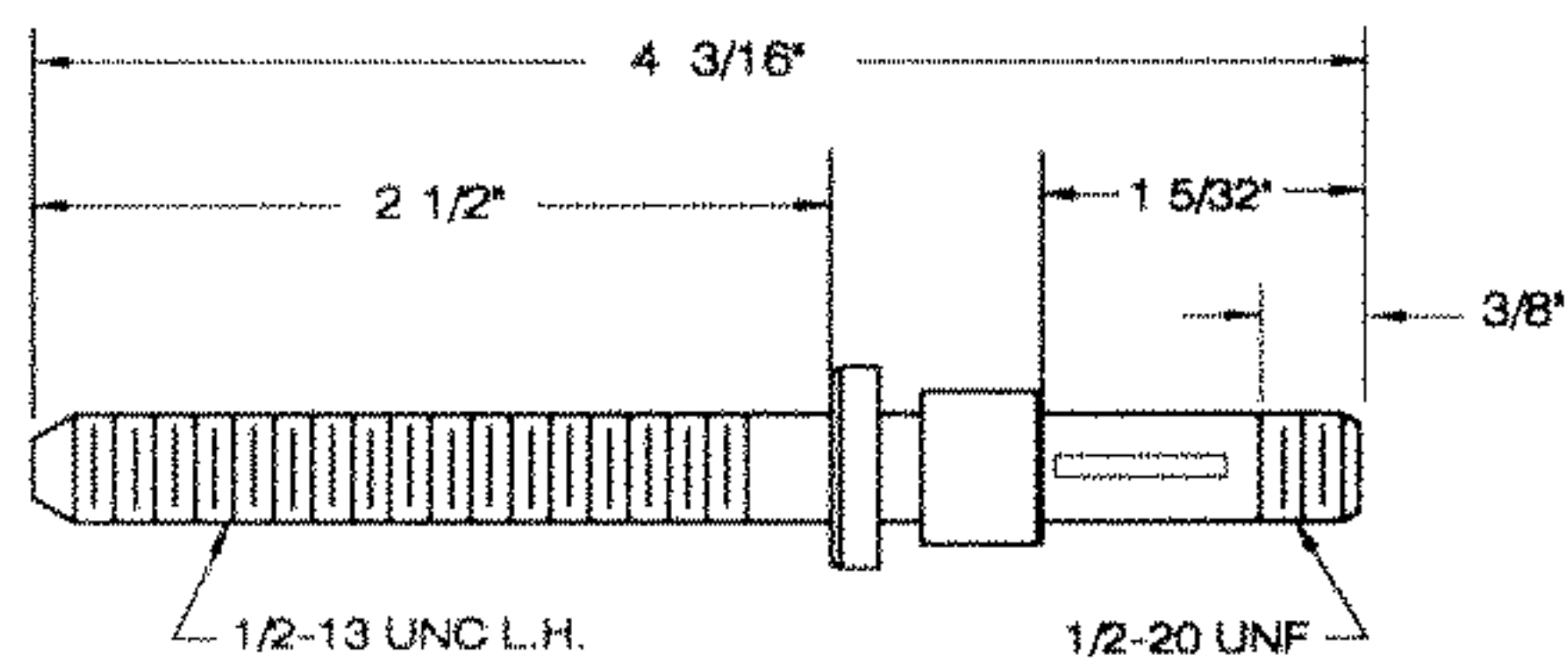


SERVICE NOTE A:

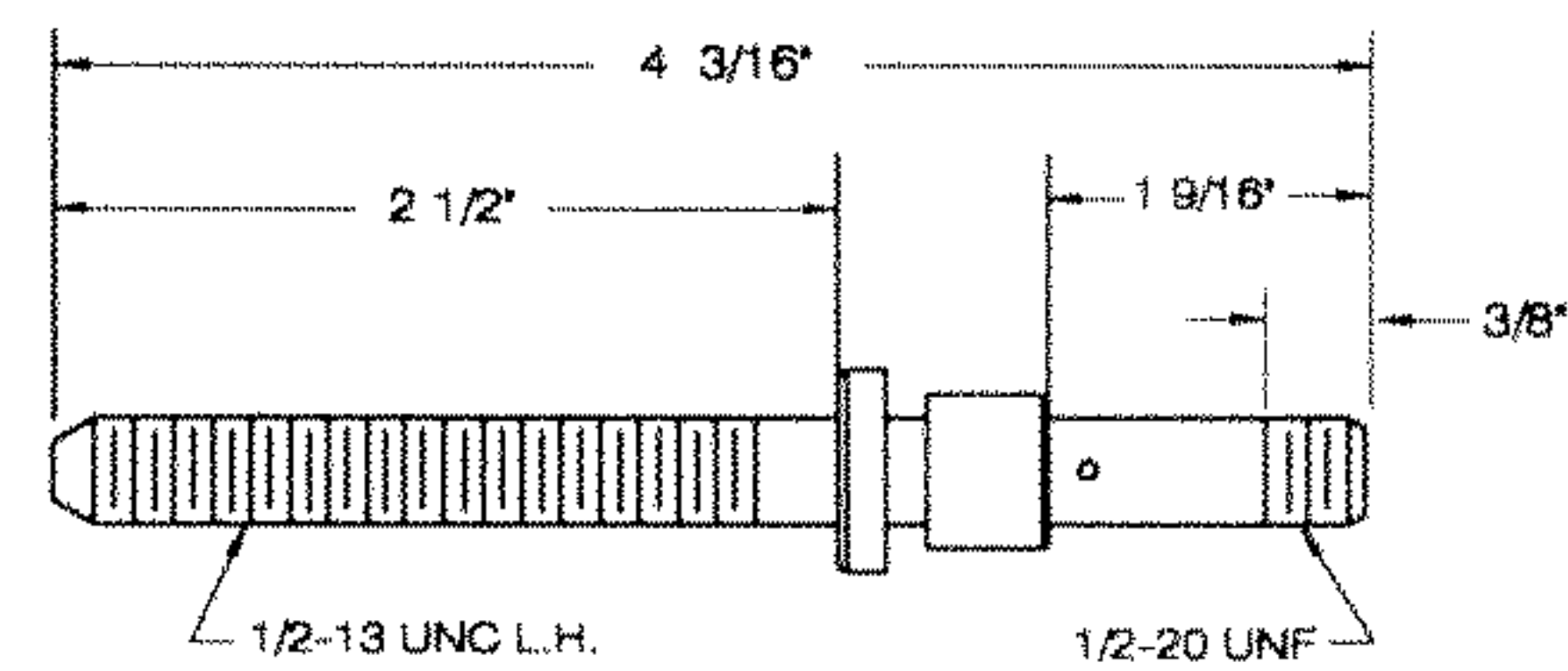
In the past there have been several tailstock handwheels and adjusting screws used on the tailstock assemblies. The illustrations below are provided to identify which adjusting screw, handwheel and hardware are to be used.

MAY OF 1956 TO MAY OF 1963



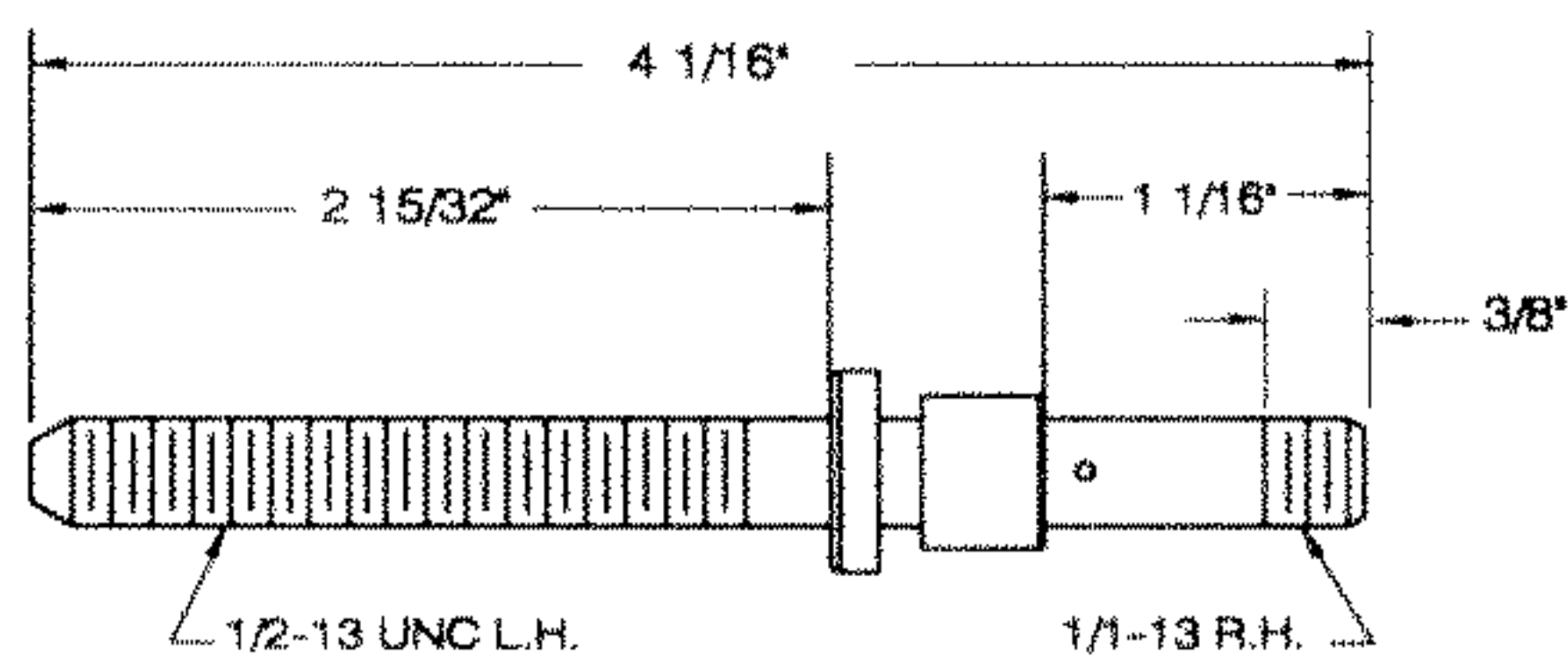
- 434-04-112-5004 - ADJUSTING SCREW
- 930-01-990-3643 - HANDWHEEL
- 927-01-100-2617 - KEY
- 902-01-020-1227 - 1/2-20 HEX JAM NUT

MAY OF 1963 TO OCT OF 1968



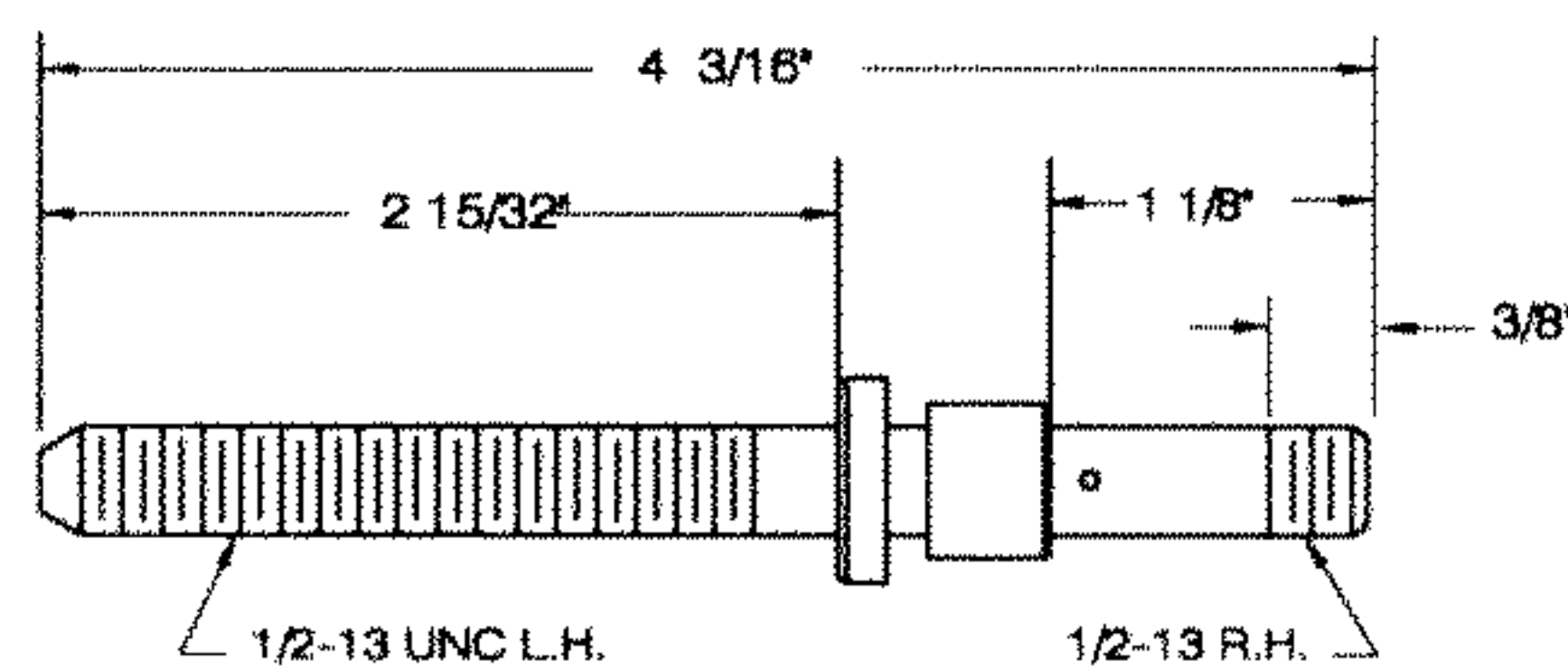
- 434-04-112-5001 - ADJUSTING SCREW
- 930-01-991-9035 - HANDWHEEL
- 905-01-010-2704 - 1/8 X 3/4" SPRING PIN
- 902-01-020-1266 - 1/2-13 HEX JAM NUT

OCT OF 1968 TO JUNE OF 1970



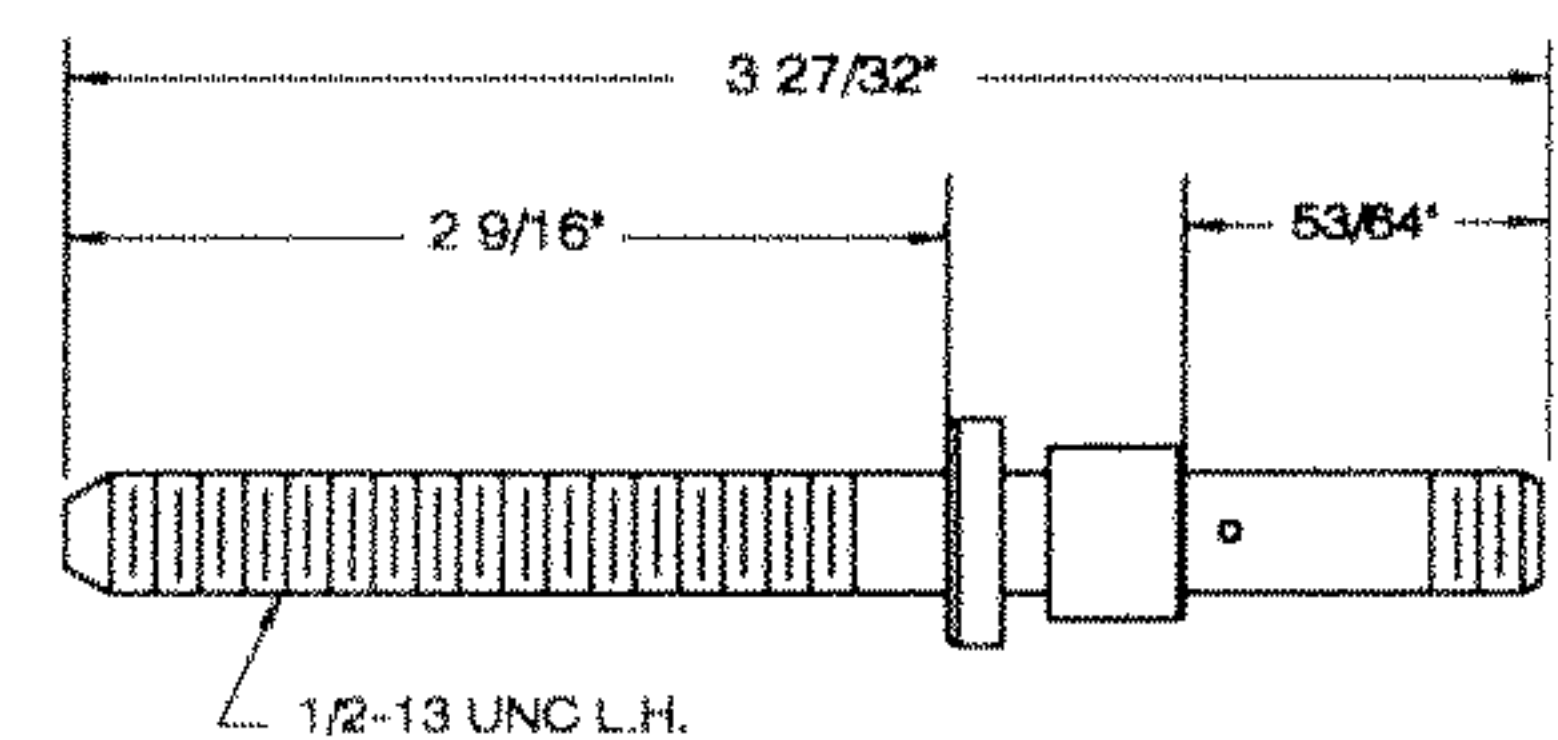
- 434-04-412-0001 - ADJUSTING SCREW
- 930-01-043-1338 - HANDWHEEL
- 905-01-010-2704 - 1/8 X 3/4" SPRING PIN
- 902-01-020-1266 - 1/2 -13 HEX JAM NUT

JUNE OF 1970 TO JAN 1978

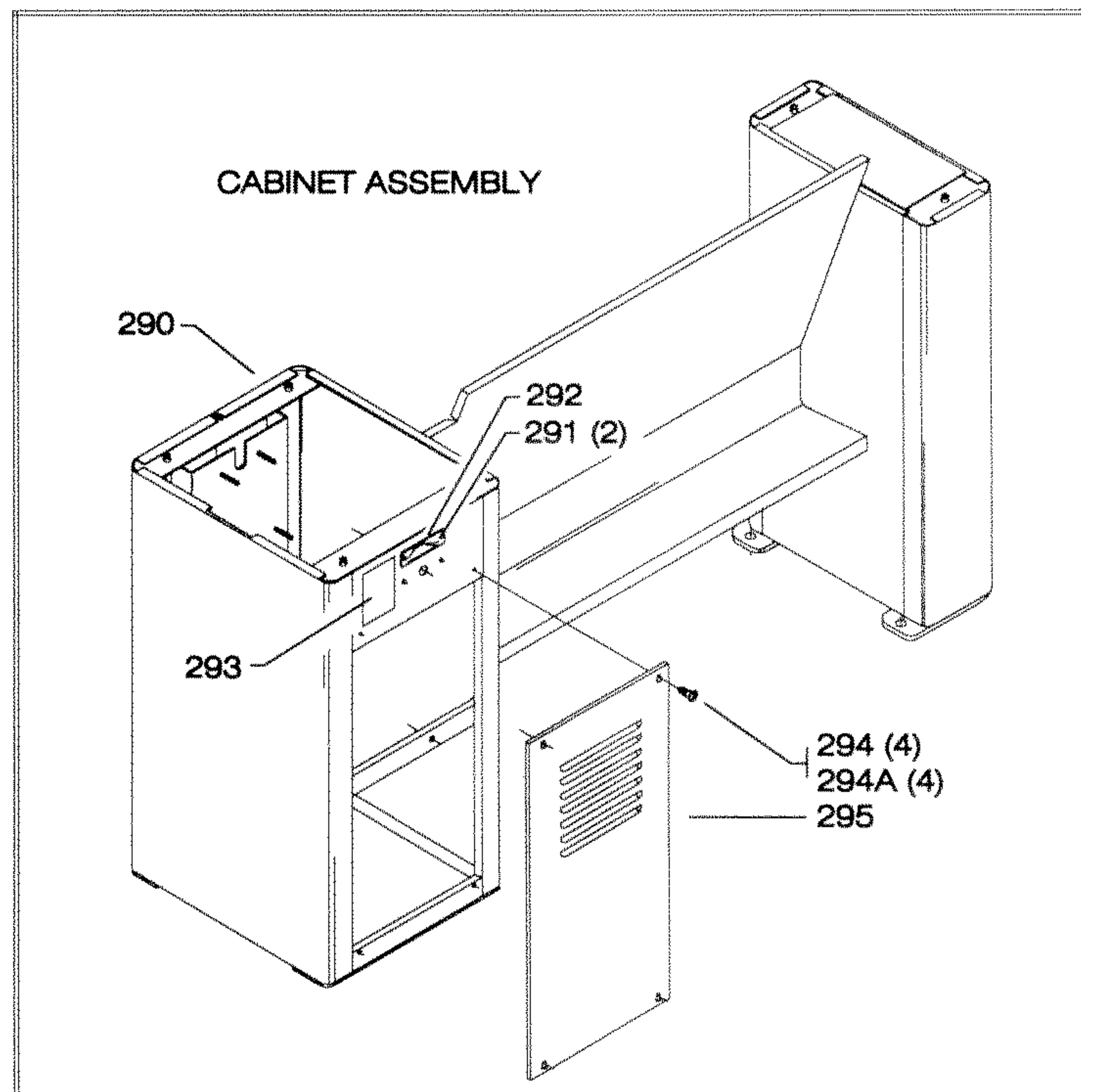
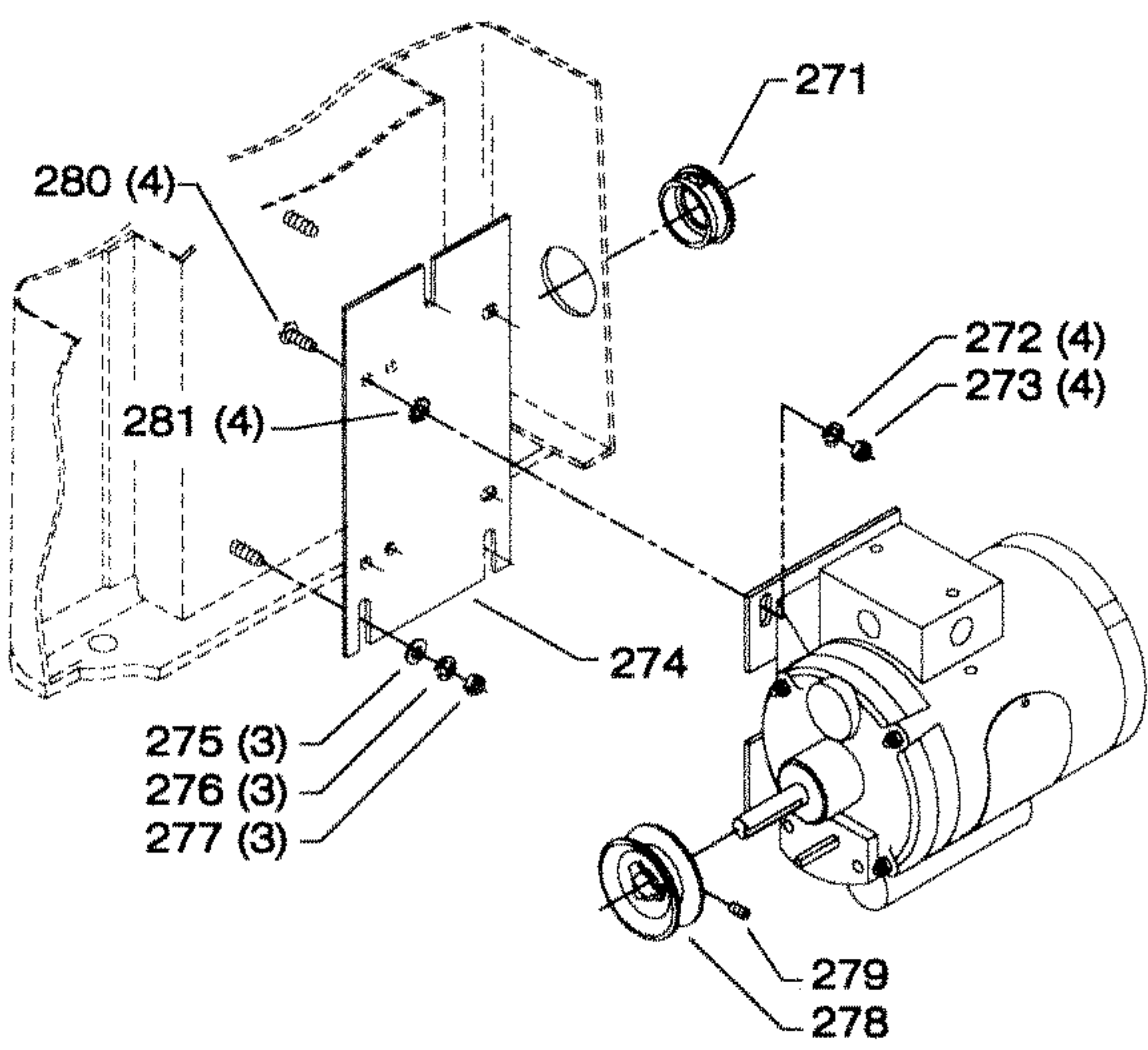
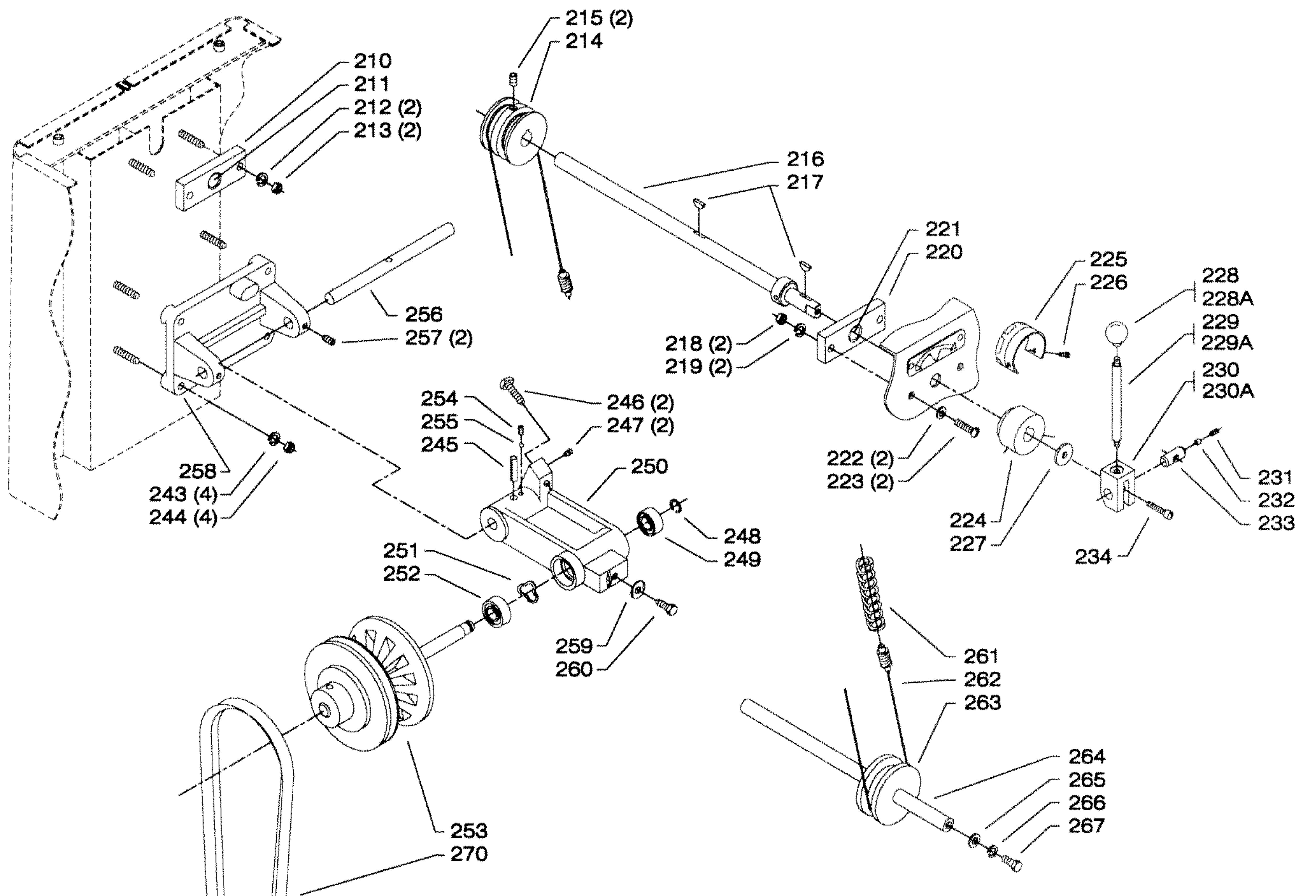


- 1202432 - ADJUSTING SCREW
- 930-01-043-1338 - HANDWHEEL
- 905-01-010-2711 - 1/8 X 5/8" SPRING PIN
- 902-01-020-1266 - 1/2-13 HEX JAM NUT

JAN OF 1978 TO PRESENT



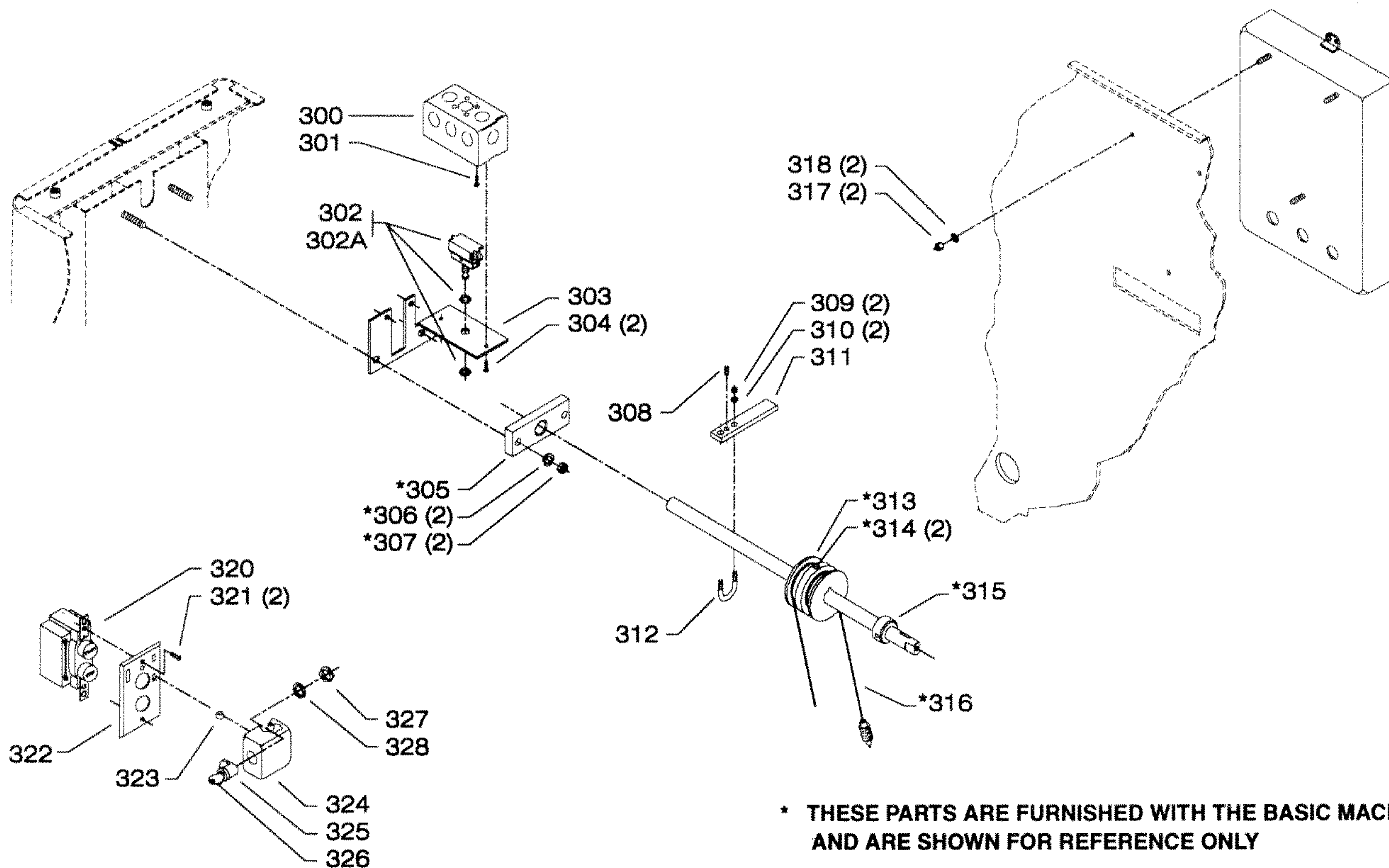
- 434-03-112-5005 - ADJUSTING SCREW
- 930-01-043-1338 - HANDWHEEL
- 905-01-010-2704 - 1/8 X 3/4" SPRING PIN



REPLACEMENT PARTS

REF NO	PART NUMBER	DESCRIPTION	REF NO	PART NUMBER	DESCRIPTION
210	414-02-304-5001	BEARING BLOCK, INCL:	*	434-03-314-5006	VS PULLEY BRACKET ASSY, CONST OF:
211	920-75-011-3906	BEARING	245	905-01-010-5077	5/16" X 1 1/4" SPRING PIN
212	904-02-010-1703	5/16" LOCK WASHER	246	901-04-020-0322	3/8-16 X 1 1/2" HEX SOC SET SCREW
213	902-01-010-1300	5/16-18 HEX NUT	247	901-04-190-9415	1/4-20 X 1/4" HEX SOC SET SCREW
214	414-02-100-5001	SPEED CONTROL PULLEY	248	920-04-021-6618	BALL BEARING
215	901-04-170-0213	5/16-18 X 1/2" HEX SOC SET SCREW	249	904-15-010-7042	EXT RET RING
216	434-03-406-5003	SHAFT W/COLLAR	250	414-02-014-5016	VS PULLEY BRACKET
217	927-01-010-2601	WOODRUFF KEY	251	928-06-023-1012	WASHER
218	902-01-010-1300	5/16-18 HEX NUT	252	920-04-020-5335	BALL BEARING
219	904-02-010-1703	5/16" LOCK WASHER	253	434-03-406-5004	V S PULLEY ASSY
220	414-02-304-5001	BEARING BLOCK, INCL:	254	901-04-190-0203	1/4-20 X 3/8" HEX SOC SET SCREW
221	920-75-011-3906	BEARING	255	402-04-063-5001	DRAG PLUG
222	904-01-010-1615	FLAT WASHER	256	414-02-106-5025	PIVOT SHAFT
223	901-02-010-0515	5/16-18 X 1 1/4" ROUND HD SCREW	257	901-04-150-0217	5/16-18 X 1/2" HEX SOC SET SCREW
224	434-03-407-5001	HUB ASSY, INCL:	258	434-03-014-5005	MOUNTING BRACKET
225	960-03-012-0408	DIAL	259	426-05-027-5001	CLAMP
226	901-06-450-2849	#06 X 1/4" ROUND HD SCREW	260	901-01-060-3104	3/8-16 X 1/2" HEX HD SCREW
227	904-01-031-4954	FLAT WASHER	261	928-02-081-8876	TENSION SPRING
228	1201642	KNOB - SLIP ON (<i>Current Models Only</i>)	262	434-03-381-5001	CABLE ASSY
228A	931-01-022-0490	KNOB - SCREW ON (<i>Early Models Only</i>)	263	414-01-362-5001	IDLER PULLEY
229	434-04-111-5001	STUD (<i>Threaded One End</i>) (<i>Current Models Only</i>)	264	434-03-106-5003	IDLER PULLEY SHAFT
229A	414-02-111-5009	STUD (<i>Threaded Both Ends</i>) (<i>Early Models Only</i>)	265	904-01-010-1615	FLAT WASHER
230	434-04-019-5001	7/16-14 CAM BLOCK (<i>Current Models Only</i>)	266	904-02-020-1704	3/8" LOCK WASHER
230A	434-04-019-5002	5/16-18 CAM BLOCK (<i>Early Models Only</i>)	267	901-01-060-3104	3/8-16 X 1/2" HEX HD SCREW
231	414-02-071-5018	PIN	270	49-195	V-BELT (37" OC)
232	414-01-074-5001	PLUG	271	438-01-011-0020	INSULATOR
233	901-04-150-0208	1/4-20 X 1/4" HEX SOC SET SCREW	272	904-02-010-1703	5/16" LOCK WASHER
234	901-03-010-0750	5/16-18 X 1" HEX SOC HD SCREW	273	902-01-010-1300	5/16-18 HEX NUT
243	904-02-010-1703	5/16" LOCK WASHER	274	434-03-072-5001	MOTOR PLATE
244	902-01-010-1300	5/16-18 HEX NUT	275	904-01-010-1615	FLAT WASHER
			276	904-02-010-1703	5/16" LOCK WASHER
			277	902-01-010-1300	5/16-18 HEX NUT
			278	41-042	3" OD, 1/2" BORE PULLEY, INCL:
			279	901-04-150-0206	5/16-18 X 5/16" HEX SOC SET SCREW
			278	41-043	3" OD, 5/8" BORE PULLEY, INCL:
			279	901-04-150-0206	5/16-18 X 5/16" HEX SOC SET SCREW
			280	901-03-040-8016	5/16-18 X 3/4" BUTTON HD SCREW
			281	904-03-030-1656	5/16" EXT TOOTH WASHER
			290	434-03-318-5002	CABINET ASSY
			291	901-06-450-2250	#04 X 3/16" ROUND HD SCREW
			292	414-02-072-5008	INSTRUCTION PLATE
			293	434-00-752-0001	WARNING LABEL
			294	901-05-213-1498	#10 X 1/2" HEX WASHER HD SCREW (<i>Current Models Only</i>)
			294A	901-05-131-7351	#12 X 1/2" ROUND HD SCREW (<i>Early Models Only</i>)
			295	434-03-031-5004	COVER
			*	NOT SHOWN ASSEMBLED	

REPLACEMENT PARTS



SLOW START FEATURE

REF NO	PART NUMBER	DESCRIPTION	REF NO	PART NUMBER	DESCRIPTION
300	438-01-001-0060	UTILITY BOX	314	901-04-170-0213	5/16-18 X 1/2" HEX SOC SET SCREW
301	901-02-140-0584	#10-32 X 3/8" BIND HD SCREW	315	434-03-406-5003	SHAFT W/COLLAR
302	438-01-017-0181	LIMIT SWITCH W/LOCK NUTS 1 POLE (Current Models Only)	316	434-03-381-5001	CABLE ASSY
302A	438-01-017-0105	LIMIT SWITCH W/LOCK NUT 2 POLES (Early Models Only)	317	902-01-120-1034	1/4-20 HEX NUT
303	434-03-014-5007	MOUNTING BRACKET	318	904-03-020-1764	1/4" INT TOOTH WASHER
304	901-02-010-0553	#06-32 X 1/2" ROUND HD SCREW	320	438-01-017-0023	SWITCH
305	414-02-304-5001	BEARING BLOCK	321	901-02-010-0553	#06-32 X 1/2" ROUND HD SCREW
306	904-02-010-1703	5/16" LOCK WASHER	*	438-01-308-0006	MAGNETIC SWITCH PLATE, INCL:
307	902-01-010-1300	5/16-18 HEX NUT	322	438-01-008-0015	COVER PLATE
308	901-04-150-1185	1/4-20 X 5/16" HEX SOC SET SCREW	323	434-03-059-5001	HINGE
309	902-01-120-1034	1/4-20 HEX NUT	324	438-01-008-0016	COVER
310	904-02-020-1702	1/4" LOCK WASHER	325	434-03-368-5001	SWITCH LOCK, INCL:
311	434-03-067-5003	LEVER	326	434-03-033-5001	LOCK KEY
312	434-03-027-0008	CLAMP	327	434-03-079-5003	RETAINER
313	414-02-100-5001	SPEED CONTROL PULLEY	328	904-01-031-2903	FLAT WASHER
			*		NOT SHOWN ASSEMBLED

STANDARD SAFETY EQUIPMENT

In order to promote tool safety, Delta International Machinery Corp. strictly enforces the policy of repairing or replacing any damaged or missing standard safety equipment on machines presented to Delta Authorized Service Center for service/repairs. Any product which is presented to a Delta Authorized Service Center for repairs which contains missing or damaged standard safety equipment will have that equipment repaired or replaced and the customer will be charged for any such service/repairs. Customers can avoid such charges only if the missing safety component is supplied to the service center at the time of repair.

This parts list is provided to aid in obtaining service parts. Copies of the instruction and maintenance literature can be obtained through the Delta Technical Publications Department or through your local service outlet.